



Republic of Zambia

The Monthly

Central Statistical Office

Volume 75

Website: www.zamstats.gov.zm

June, 2009

Foreword

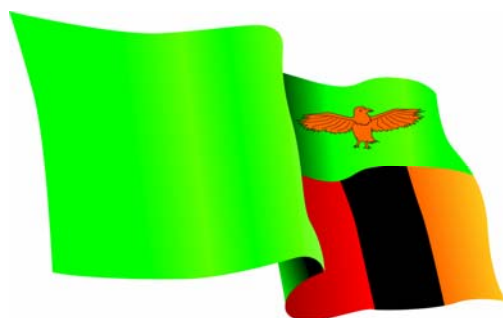
Welcome to the Monthly presentation organised by the Dissemination Branch of the Central Statistical Office (CSO). The CSO embarks on vigorous information delivery strategy to major stakeholders and the media institutions in order to increase utilisation of statistical products and services. The office produces a number of statistical products in the Economic, Social, Agricultural and Environmental areas. The information collected in these areas may be used for various purposes including policy formulation, planning, implementation, monitoring and evaluation of programmes and projects.

This Monthly publication is an attempt to provide highlights of CSO's work and how it can help media institutions and the general public to make use of data and information for sustainable national development and decision-making.

I would like to urge our readers and users of statistical information to send to us any comments that may enhance statistical production and contribute to the improvement of this bulletin.

Ms. Efreda Chulu
Director of Census and Statistics

25th June, 2009



Serving Your Data Needs

Inside this Issue

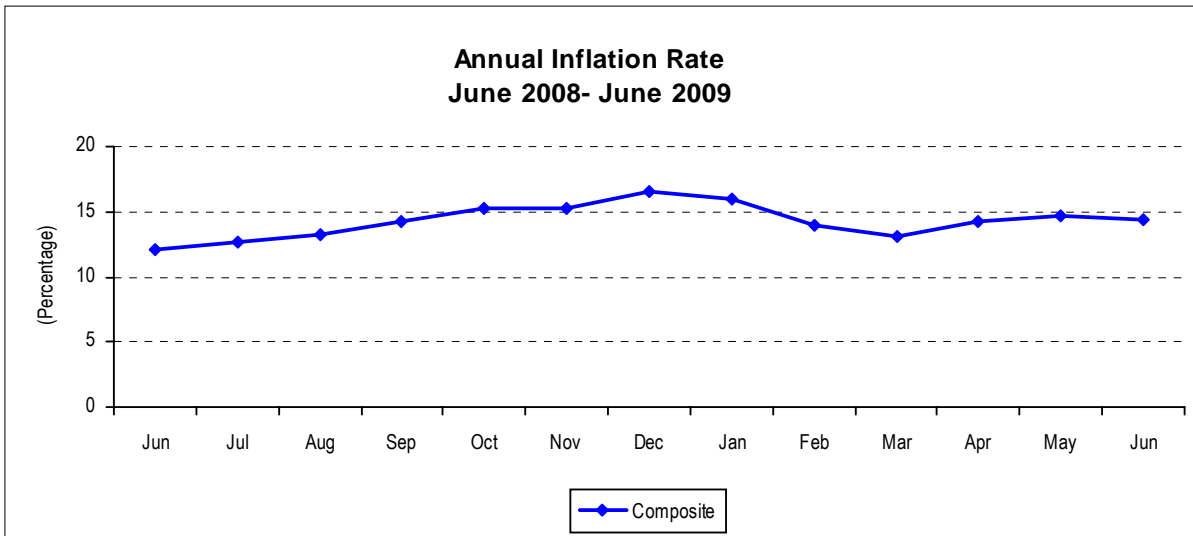
- *Inflation declines from 14.7 percent in May 2009 to 14.4 percent in June 2009*
- *May 2009 Records Trade Deficit*
- *Male orphans and vulnerable children (OVCs) likely to initiate early sexual activity compared with females OVCs!*
- *About 52 percent of births occur at home, 2007 ZDHS reveals!*
- *Maize Production expected to increase reveals the 2008/2009 Crop Forecasting Survey*
- *Layman & Statistics*
- *Selected Socio-Economic Indicators*

INFLATION

Inflation declines from 14.7 percent in May 2009 to 14.4 percent in June 2009

The annual rate of inflation, as measured by the all items Consumer Price Index (CPI), reduced by 0.3 of a percentage point from 14.7 percent in May, 2009 to 14.4 percent in

June, 2009. The decline in the annual inflation rate in June 2009 was due to reductions in the prices of some food products such as mealie meal and maize grain.



Changes in annual inflation rates for CPI Main Groups

The annual inflation rate between June 2008 and June 2009 reduced for food beverages and tobacco; and rent, fuel and lighting, and increased for clothing and foot wear;

furniture and household goods; medical care; transport and communication; recreation and education; and other goods and services.

Annual Inflation Rate: CPI Main Groups (Percent)

	Total	Food And Beverages	Clothing And Footwear	Rent Fuel & Lighting	Furniture and Household Goods	Medical care	Transport and comms	Recreation And Education	Other Goods And Services
Jan 07 – Jan 06	9.8	1.0	34.9	15.1	16.5	24.9	22.8	15.9	11.4
Feb 07 – Feb 06	12.6	4.2	28.3	18.3	20.4	23.7	33.9	15.0	10.4
Mar 07 – Mar 06	12.7	4.9	26.9	15.8	21.6	22.1	33.5	14.9	11.0
Apr 07 – Apr 06	12.4	5.5	23.7	15.7	20.0	18.8	32.4	14.8	7.7
May 07 – May 06	11.8	5.7	18.8	17.1	19.2	16.5	28.2	10.4	7.0
Jun 07 – June 06	11.1	4.8	20.3	18.1	18.1	14.9	24.6	10.6	7.0
Jul 07 – July 06	11.2	6.7	19.4	14.9	17.4	14.0	18.2	10.0	7.7
Aug 07- Aug 06	10.7	7.9	19.6	11.6	15.2	11.6	11.8	10.0	7.5
Sep 07 – Sep 06	9.3	6.2	17.9	11.2	15.5	11.4	9.7	8.1	7.7
Oct 07 – Oct 06	9.0	5.6	14.7	11.8	16.8	10.9	10.3	7.4	6.3
Nov 07 – Nov 06	8.7	5.2	16.3	10.7	15.8	10.2	11.6	7.1	6.7
Dec 07 – Dec 06	8.9	5.9	14.2	11.2	13.4	9.1	13.6	8.2	6.9
Jan 08 – Jan 07	9.3	6.9	12.5	13.4	17.1	8.4	7.7	6.8	7.0
Feb 08 – Feb 07	9.5	9.1	11.1	12.5	16.0	8.9	0.3	9.0	8.4
Mar 08 – Mar 07	9.8	9.1	11.2	12.2	16.1	10.0	1.1	10.3	9.4

	Total	Food And Beverages	Clothing And Footwear	Rent Fuel & Lighting	Furniture and Household Goods	Medical care	Transport and comms	Recreation And Education	Other Goods And Services
Apr 08 – Apr 07	10.1	9.8	11.1	12.7	16.3	12.2	-0.2	11.1	9.4
May 08 – May 07	10.9	11.7	10.5	12.0	14.9	12.4	0.5	11.4	9.5
Jun 08 – June 07	12.1	15.6	9.7	11.4	13.4	12.2	-3.5	10.6	10.4
Jul 08 – Jul 07	12.6	14.2	9.3	14.9	14.2	13.9	4.7	11.0	11.3
Aug 08- Aug 07	13.2	16.3	6.3	14.5	13.3	12.9	5.3	11.2	10.7
Sep 08– Sep 07	14.2	16.2	5.6	17.7	14.8	11.8	11.5	11.5	10.4
Oct 08 – Oct 07	15.2	17.6	4.6	14.9	15.1	11.3	19.2	11.6	12.1
Nov 08 – Nov 07	15.3	18.5	2.7	14.5	16.1	10.3	16.4	12.4	12.5
Dec 08 – Dec 07	16.6	20.5	2.5	15.2	18.0	9.9	15.9	12.1	13.2
Jan 09 – Jan 08	16.0	21.3	3.0	8.9	13.8	9.2	18.3	11.7	15.2
Feb 09 – Feb 08	14.0	16.3	3.9	8.6	16.5	9.6	19.4	9.3	15.4
Mar 09 – Mar 08	13.1	13.9	5.9	10.4	16.3	10.1	19.7	7.9	15.2
Apr 09 – Apr 08	14.3	15.9	6.8	10.4	16.1	8.2	22.0	7.1	17.1
May 09 – May 08	14.7	16.1	7.9	10.7	21.2	8.0	16.6	6.0	20.0
Jun 09 – June 08	14.4	14.1	9.6	10.1	22.4	10.0	21.0	6.9	22.6

Contributions of different Items to overall inflation

Of the total 14.4 percent annual inflation in June 2009, food products accounted for 7.0 percentage points, while non-food products

in the Consumer Price Index (CPI) accounted for a total of 7.4 percentage points.

<i>Items</i>	Percentage Points Contributions of different items to overall inflation											
	Jul-08	Aug-08	Sep-08	Oct-08	Nov-08	Dec-08	Jan-09	Feb-09	Mar-09	Apr-09	May-09	Jun-09
Food Beverages and Tobacco	6.8	7.8	7.8	8.4	8.9	9.9	10.3	8.0	6.8	7.8	7.9	7.0
Clothing and Footwear	0.9	0.6	0.5	0.5	0.3	0.3	0.3	0.4	0.6	0.6	0.8	0.9
Rent and household energy	1.7	1.6	2.0	1.7	1.6	1.7	1.0	1.0	1.2	1.2	1.2	1.1
Furniture and Household Goods	1.6	1.5	1.7	1.7	1.8	2.0	1.6	1.9	1.8	1.8	2.4	2.5
Medical Care	0.1	0.1	0.1	0.1	0.1	0.1	0.1	0.1	0.1	0.1	0.1	0.1
Transport (fuel, airfares, new motor vehicles)	0.4	0.5	1.0	1.6	1.4	1.4	1.5	1.6	1.6	1.8	1.3	1.6
Recreation and Education	0.8	0.8	0.8	0.8	0.8	0.8	0.8	0.6	0.5	0.5	0.4	0.5
Other Goods and Services	0.3	0.3	0.3	0.4	0.4	0.8	0.4	0.4	0.5	0.5	0.6	0.7
All Items	12.6	13.2	14.2	15.2	15.3	16.6	16.0	14.0	13.1	14.3	14.7	14.4

The annual food inflation rate

The annual food inflation rate was recorded at 14.1 percent in June 2009. This is a decline from 16.1 percent in May 2009. Contributing most to the decline were reductions in the cost of white breakfast meal, white roller meal, maize grain, meat and tubers (sweet

potatoes). However, increases were recorded in the cost of cereals and cereal products, fish, kapenta, fresh vegetables, dried beans, fresh milk and milk products, tea, coffee and other processed food products.

The Annual Non-food inflation rate

The annual non-food inflation rate stood at 14.7 percent in June 2009. This is an increase from 13.3 percent in May 2009.

Annual Inflation Rates: Food and Non-food

Period	Total	Food	Non-Food
Jan 06 – Jan 05	12.2	12.8	11.5
Feb 06 - Feb 05	10.3	10.2	10.3
Mar 06 - Mar 05	10.7	10.9	10.4
Apr 06 – Apr 05	9.4	8.3	10.6
May 06 – May 05	8.6	5.6	12.0
Jun 06 - Jun 05	8.5	5.4	11.8
Jul 06 - Jul 05	8.7	4.3	13.6
Aug 06 – Aug 05	8.0	0.4	16.4
Sep 06 – Sep 05	8.2	1.5	15.7
Oct 06 - Oct 05	7.9	1.0	15.4
Nov 06 - Nov 05	8.1	0.8	16.2
Dec06 – Dec 05	8.2	-0.2	18.1
Jan 07 - Jan 06	9.8	1.0	20.0
Feb 07 - Feb 06	12.6	4.2	22.1
Mar 07 - Mar 06	12.7	4.9	21.5
Apr 07 – Apr 06	12.4	5.5	20.1
May 07 – May 06	11.8	5.7	18.2
Jun 07 - Jun 06	11.1	4.8	17.7
Jul 07- Jul 06	11.2	6.7	15.6
Aug 07– Aug 06	10.7	7.9	13.3
Sep 07 – Sep 06	9.3	6.2	12.4
Oct 07- Oct 06	9.0	5.6	12.2
Nov 07- Nov 06	8.7	5.2	12.2
Dec07 – Dec 06	8.9	5.9	11.9
Jan 08 - Jan 07	9.3	6.9	11.7
Feb 08 - Feb 07	9.5	9.1	10.0
Mar 08 - Mar 07	9.8	9.1	10.4
Apr 08– Apr 07	10.1	9.8	10.5
May 08 – May 07	10.9	11.7	10.1
Jun 08 - Jun 07	12.1	15.6	8.8
Jul 08- Jul 07	12.6	14.2	11.2
Aug 08– Aug 07	13.2	16.3	10.4
Sep 08 – Sep 07	14.2	16.2	12.4
Oct 08- Oct 07	15.2	17.6	13.0
Nov 08- Nov 07	15.3	18.5	12.4
Dec 08 – Dec 07	16.6	20.5	12.9
Jan 09 - Jan 08	16.0	21.3	11.1
Feb 08 - Feb 07	14.0	16.3	11.7
Mar 09 - Mar 08	13.1	13.9	12.3
Apr 09– Apr 08	14.3	15.9	12.7
May 09 – May 08	14.7	16.1	13.3
Jun 09 - Jun 08	14.4	14.1	14.7

National Average Prices of Selected Products

A comparison of retail prices between May 2009 and June 2009, shows that the national average price of a 25 kg bag of white breakfast meal reduced by 3.0 percent, from K66,970 to K64,966, while the national average price of a 25 kg bag of white roller meal reduced by 11.1 percent, from K52,202 to K46,419. The national average price of a

20 litre tin of maize grain declined by 6.8 percent, from K22,789 to K21,244. However, the national average price of 1kg of dried kapenta (Mpulungu) increased by 5.7 percent, from K49,241 to K51,812, while the national average price of 1kg of tomatoes increased by 21.5 percent, from K4,003 to K4,863

National Average prices for selected Products and Months

Product Description	2009						Percentage Change
	January	February	March	April	May	June	Jun-09/May-09
White breakfast 25Kg	59,311	53,576	56,751	65,543	66,970	64,966	-3.0
White Roller 25Kg	49,118	43,832	46,156	54,732	52,202	46,419	-11.1
White Maize 20 litre tin	28,185	28,935	30,441	26,015	22,789	21,244	-6.8
Rice Imported 1 Kg	21,148	23,289	23,460	24,933	27,348	27,282	-0.2
Wheat Plain Flour (NMC) 2.5 Kg	16,455	16,641	17,949	18,726	18,694	18,447	-1.3
Fillet Steak 1 Kg	26,404	25,716	26,601	26,504	26,338	26,235	-0.4
Rump Steak 1 Kg	24,272	23,289	23,415	23,574	24,258	24,061	-0.8
Mixed Cut 1 Kg	16,421	16,313	16,457	16,858	17,202	17,155	-0.3
T-bone 1 Kg	22,049	22,158	22,999	23,261	23,605	23,454	-0.6
Beef Sausages 1 Kg	20,564	20,857	20,996	21,857	22,461	21,865	-2.7
Ox-liver 1 Kg	19,053	19,235	18,729	19,597	19,781	19,446	-1.7
Offals 1 Kg	10,149	10,172	10,381	10,566	10,657	10,508	-1.4
Pork chops 1 Kg	21,333	20,947	22,843	22,902	22,939	22,863	-0.3
Dressed chicken 1 Kg	16,405	16,851	16,880	16,964	16,890	17,720	4.9
Bream Fresh/Frozen 1 Kg	13,906	13,768	13,731	14,010	13,636	14,505	6.4
Dried Kapenta Mpulungu 1Kg	46,826	45,388	46,420	47,023	49,241	51,812	5.2
Dried Kapenta Siavonga 1Kg	46,290	46,549	45,395	47,436	46,275	43,945	-5.0
Dried Kapenta Chisense 1Kg	39,159	37,044	25,357	26,125	26,607	28,141	5.8
Dried bream 1 Kg	27,659	27,429	25,640	27,562	29,375	29,881	1.7
Fresh milk (Pasteurised) Local 500 ml	3,159	3,204	3,040	3,171	3,218	3,133	-2.6
Eggs 1 Unit	7,332	7,449	7,524	7,602	7,469	7,944	6.4
Cooking oil Imported Any 750 ml	9,163	9,208	9,108	9,213	9,316	9,299	-0.2
Cabbage 1kg	1,737	1,692	1,583	1,586	1,721	1,516	-11.9
Onion 1kg	4,908	5,689	5,054	5,535	6,322	7,424	17.4
Tomatoes 1kg	3,089	3,107	2,756	3,204	4,003	4,863	21.5
Chinese cabbage 1kg	2,451	2,066	1,732	2,074	2,188	2,120	-3.1
Rape 1kg	2,484	2,200	2,237	2,629	2,589	2,321	-10.4
Shelled groundnut 1kg	8,185	8,274	8,099	8,232	7,789	7,633	-2.0
Sweet potatoes 1kg	3,429	3,586	3,586	1,577	1,464	1,179	-19.5
Air fare Lusaka/London British Airways 1 Way	5,506,787	6,338,400	6,449,600	6,338,400	5,782,400	5,938,400	2.7
Air Fare Lusaka/Ndola Zambezi Airlines 1 way	857,820	684,000	696,000	684,000	621,000	624,000	0.5
Bed & continental Breakfast 3 to 5 star Hotel	798,794	828,501	897,972	580,560	641,523	675,832	5.3

INTERNATIONAL MERCHANDISE TRADE

May 2009 Records Trade Deficit

Zambia recorded a Trade deficit valued at K298.4 billion in May 2009. This means that the country exported less in May 2009 than it imported in value terms.

Imports, Domestic Exports, Re-Exports, Total Exports & Trade Balance, January to May 2009 (K' Millions)

Months	Imports (cif)	Domestic Exports (fob)	Re-Exports (fob)	Total Exports (fob)	Trade Balance
January®	1,397,237	1,027,236	96,072	1,123,308	(273,929)
February®	1,303,878	1,075,810	84,497	1,160,307	(143,571)
March®	1,347,347	1,204,946	59,235	1,264,182	(83,165)
April*	1,563,464	1,383,876	44,114	1,427,990	(135,474)
May*	1,823,036	1,410,021	114,661	1,524,682	(298,354)
Total 2009	7,434,962	6,101,889	398,579	6,500,469	(934,493)

Source: CSO, International Trade Statistics, 2009

Note: (*) Provisional

Note: (R) Revised figures

Note: These Trade Data are Compiled Based on the General Trade System

Exports by International Standard Industrial Classification (ISIC) May 2009

Zambia's major export (by ISIC) products in May 2009 were under the manufacturing sector accounting for 88.4 percent of which the prominent was the manufacturing of basic precious and non-ferrous metals (i.e. Copper related) with 76.5 percent. Other

notable products in manufacturing were: dairy products; sugar; soap & detergents. Other major export products were from the mining & quarrying; and agriculture, hunting & forestry sectors.

Total Exports by (ISIC) Sections, May* 2009 (K' Millions)

CODE	DESCRIPTION	May-09*	
		Value (K' Millions)	% Share
D	Manufacturing	1,347,854	88.4
Of which:	Manufacture of basic precious and non-ferrous metals	1,031,065	76.5
	Manufacture of dairy products	51,328	3.8
	Manufacture of sugar	51,081	3.8
	Manufacture of soap and detergents, cleaning and polishing preparations, perfumes and toilet preparations	25,194	1.9
	Manufacture of machinery for mining, quarrying and construction	16,747	1.2
	Manufacture of cement, lime and plaster	14,728	1.1
	Other publishing	13,269	1.0
	Manufacture of other food products n.e.c.	12,207	0.9
	Manufacture of aircraft and spacecraft	12,181	0.9
	Manufacture of basic chemicals, except fertilizers and nitrogen compounds	10,848	0.8
	Manufacture of refined petroleum products	10,836	0.8
	Manufacture of insulated wire and cable	10,454	0.8
	Others Manufacturing	87,916	6.5
C	Mining and quarrying	132,327	8.7
A	Agriculture, hunting and forestry	29,695	1.9
O	Other community, social and personal service activities	5,072	0.3
B	Fishing	4,958	0.3
E	Electricity, gas and water supply	4,777	0.3
	Other Sections	0	0.0
Total:		1,524,682	100.0

Source: CSO, International Trade Statistics, 2009

(*) Provisional

(R) Revised figures

Zambia's Major Exports Classified by Harmonized Coding System (HS), May 2009

Zambia's major export product in May 2009 was copper and articles thereof accounting for 65.4 percent of Zambia's total export earnings. Other export products were: ores, slag and ash (9.6 percent); sugar and sugar confectionary (3.5 percent); dairy products,

birds' eggs, natural honey, edible products nes (3.4 percent); and machinery & mechanical appliances (1.8 percent). These five product categories collectively accounted for 83.7 percent of the total export earnings in May 2009.

Zambia's Major Exports by HS Chapter for May* 2009 (K' Millions)

Chapter Code	Description	Value (K' Millions)	% Share
74	Copper and articles thereof	997,361	65.4
26	Ores, slag and ash	145,962	9.6
17	Sugars and sugar confectionery	53,456	3.5
04	Dairy prod; birds' eggs; natural honey; edible prod nes	52,125	3.4
84	Boilers, machinery & mechanical appliance; parts	27,926	1.8
34	Soap, organic surface-active agents, washing prep, etc	24,330	1.6
25	Salt; sulphur; earth & stone; plastering mat; lime & cement	19,758	1.3
71	Natural/cultured pearls, precious stones & metals, coin etc	19,275	1.3
81	Other base metals; cermets; articles thereof	18,592	1.2
85	Electrical machinery equip parts thereof; sound recorder etc	15,330	1.0
	Other Chapters	150,568	9.9
Total:		1,524,682	100.0

Source: CSO, International Trade Statistics, 2009

Note: (*) Provisional

Zambia's Major Export Destinations by Products in May 2009

The five major destinations of Zambia's exports in May 2009 were Switzerland (54.1 percent), Democratic Republic of Congo (11.7 percent), South Africa (9.4 percent), China (4.8 percent) and Egypt (3.4 percent). These five countries collectively accounted for 83.4 percent of Zambia's total export earnings.

Switzerland was the largest destination for Zambia's export products accounting for 54.1 percent. Major export products were Cathodes and sections of cathodes of refined copper; and Refined Copper, nes, unwrought, Copper blister accounting for 68.8 and 13.1 percent, respectively. Other export products were copper ores & concentrates; and plates, sheets and strip of refined copper.

The Democratic Republic of Congo was the second largest destination of Zambia's exports accounting for 11.7 percent. Major export products were Cream in powdered form of greater than 1.5 percent fat (28.4 percent); Other polishes, creams and similar preparations (9.9 percent); Raw sugar cane in solid form (6.7 percent); Portland cement

(excl. white) (6.3 percent); and not decaffeinated roasted coffee (6.1 percent). South Africa was the third largest destination of Zambia's exports accounting for 9.4 percent. Major export products were: Wire of refined copper, maximum cross-sectional dimension of greater than 6mm (16.9 percent), Copper ores & concentrates (14.8 percent); Semi-manufactured gold (incl. gold plated) (9.4 percent); New stamps, stamp-impressed paper, cheque forms (9.0 percent); and Cobalt ores and concentrates (6.9 percent).

China was the fourth largest destination of Zambia's exports accounting for 4.8 percent. The major export products were: Plates, sheets and strips of refined copper; and refined copper, nes, unwrought: copper blister accounting for 49.6 and 39.7 percent, respectively. Other notable products were Cathodes and sections of cathodes of refined copper; and Cobalt ores and concentrates.

Zambia's fifth major export destination was Egypt with 3.4 percent. The major products were Plates, sheets and strips of refined copper (100.0 percent).

Zambia's Five Major Export Destinations by Product for May* 2009

Country / Hs-Code	Description	May-09*	
		Value (K' Millions)	% Share
SWITZERLAND		825,323	100.0
74031100	Cathodes and sections of cathodes of refined copper	567,795	68.8
74031910	Refined copper, nes, unwrought: Copper blister	107,811	13.1
26030000	Copper ores and concentrates	70,814	8.6
74091900	Plates, sheets and strip, of refined copper, uncoil	39,872	4.8
81059000	Other: Articles of cobalt, nes	18,592	2.3
26050000	Cobalt ores and concentrates	14,411	1.7
52010000	Cotton, not carded or combed	5,162	0.6
78020000	Lead waste and scrap	868	0.1
90328900	Automatic regulating or controlling instruments	0	0.0
01019000	Other	0	0.0
Other Products		0	0.0
% of Total May Exports		54.1	
CONGO DR		177,744	100.0
04022930	Cream in powdered form of >1.5% fat, sweetened	50,481	28.4
34059000	Other polishes, creams and similar preparations	17,547	9.9
17011100	Raw cane sugar, in solid form	11,886	6.7
25232900	Portland cement (excl. white)	11,233	6.3
09012110	Roasted coffee, not decaffeinated - In bulk	10,921	6.1
17019900	Cane or beet sugar, in solid form, nes	9,222	5.2
28070010	Sulphuric acid: oleum in bulk	9,217	5.2
11010000	Wheat or meslin flour	6,768	3.8
25010010	Salt/pure Sodium chloride	5,124	2.9
33029010	Other mixtures with basis of odoriferous subst.inc	3,608	2.0
Other Products		41,737	23.5
% of Total May Exports		11.7	
SOUTH AFRICA		143,987	100.0
74081100	Wire of refined copper, maximum cross-sectional dimension >6mm	24,337	16.9
26030000	Copper ores and concentrates	21,250	14.8
71081300	Semi-manufactured gold (incl. gold plated)	13,591	9.4
49070020	New stamps; stamp-impressed paper: cheque forms	12,897	9.0
26050000	Cobalt ores and concentrates	9,921	6.9
85444900	Electric conductors, nes, for a voltage <=80 V	8,855	6.1
88033000	Other parts of aeroplanes or helicopters	8,476	5.9
74081900	Wire of refined copper, maximum cross-sectional dimension	4,724	3.3
74091900	Plates, sheets and strip, of refined copper, uncoiled	3,612	2.5
87032390	Vehicles with engine capacity exceeding 1500cc	2,625	1.8
Other Products		33,700	23.4
% of Total May Exports		9.4	
CHINA		73,005	100.0
74091900	Plates, sheets and strip, of refined copper, uncoil	36,180	49.6
74031910	Refined copper, nes, unwrought: Copper blister	28,990	39.7
74031100	Cathodes and sections of cathodes of refined copper	6,288	8.6
26050000	Cobalt ores and concentrates	834	1.1
26030000	Copper ores and concentrates	274	0.4
71031000	Precious (excl. diamonds) or semi-precious stones,	107	0.1
44079900	Wood, nes sawn or chipped lengthwise, sliced or per	105	0.1
44071000	Coniferous wood sawn or chipped lengthwise, sliced	99	0.1
26080000	Zinc ores and concentrates	45	0.1
44072900	Other tropical wood spec'd in subhdg.note 1 to ch4	26	0.0
Other Products		57	0.1
% of Total May Exports		4.8	

Country / Hs-Code	Description	May-09*	
		Value (K' Millions)	% Share
EGYPT		51,768	100.0
74091900	Plates, sheets and strip, of refined copper, uncoil	51,768	100.0
01019000	Other	0	0.0
01061100	Mammals--Primates	0	0.0
01069000	Other live animals	0	0.0
02013000	Boneless	0	0.0
02022000	Frozen unboned bovine meat (excl. carcasses)	0	0.0
02032900	Frozen swine meat, nes	0	0.0
02041000	Fresh or chilled lamb carcasses and half carcasses	0	0.0
02045000	Fresh, chilled or frozen goat meat	0	0.0
02071300	Fresh or chilled cuts and offal of chickens	0	0.0
Other Products		0	0.0
% of Total May Exports		3.4	
Other Destinations		252,855	16.6
Total Value of May Exports(fob)		1,524,682	

Source: CSO, International Trade Statistics, 2009

Note: (*) Provisional

Export Market Shares by Regional Groupings, May and April 2009

The Southern African Development Community (SADC) regional grouping was the largest market for Zambia's exports accounting for 25.5 and 20.2 percent in May and April 2009, respectively. Within SADC, Congo DR was the dominant market with 45.7 percent in May and 49.0 percent in April 2009. South Africa was the second dominant market with 37.1 and 35.7 percent in May and April 2009, respectively. Other key markets were Mauritius, Malawi and Tanzania.

The Common Market for Eastern and Southern Africa (COMESA) regional grouping was the second largest market for Zambia's exports accounting for 19.5 percent in May and 17.2 percent in April 2009. Within COMESA, Congo DR was the dominant market in May and April 2009, with 59.8 and 57.7 percent, respectively. Egypt was the second dominant market with 17.4 percent in

May and 27.9 percent in April 2009. Other key markets were Mauritius, Kenya and Malawi.

Asia was the third largest market for Zambia's exports accounting for 9.1 and 15.3 percent in May and April 2009, respectively. Within Asia, China was the dominant market in May and April 2009 with 52.6 percent and 42.5 percent, respectively. Other notable markets were Malaysia, India, Saudi Arabia and Pakistan.

The European Union (EU) was the fourth largest market for Zambia's exports in May and April 2009 accounting for 6.4 and 4.1 percent, respectively. Within the EU market, United Kingdom was the dominant market with 37.0 percent in May 2009 while in April 2009 Belgium was the dominant market with 53.0 percent. Other notable markets were Luxembourg, Germany and Netherlands.

Export Market Shares by Regional Groupings, May *and April 2009 (K' Millions)

GROUPING	May-09*		GROUPING	Apr-09	
	Value (K' Millions)	% Share		Value (K' Millions)	% Share
SADC	388,596	100.0	SADC	288,711	100.0
CONGO DR	177,744	45.7	CONGO DR	141,488	49.0
SOUTH AFRICA	143,987	37.1	SOUTH AFRICA	103,017	35.7
MAURITIUS	28,373	7.3	MAURITIUS	15,484	5.4
MALAWI	11,858	3.1	TANZANIA, UNITED	12,060	4.2
TANZANIA, UNITED	10,311	2.7	ZIMBABWE	6,418	2.2
Other SADC	16,324	4.2	Other SADC	10,244	3.5
% of Total May Exports	25.5		% of Total April Exports	20.2	
COMESA	297,027	100.0	COMESA	245,159	100.0
CONGO DR	177,744	59.8	CONGO DR	141,488	57.7
EGYPT	51,768	17.4	EGYPT	68,357	27.9
MAURITIUS	28,373	9.6	MAURITIUS	15,484	6.3
KENYA	12,184	4.1	ZIMBABWE	6,418	2.6
MALAWI	11,858	4.0	KENYA	5,997	2.4
Other COMESA	15,100	5.1	Other COMESA	7,415	3.0
% of Total May Exports	19.5		% of Total April Exports	17.2	
ASIA	138,810	100.0	ASIA	218,066	100.0
CHINA	73,005	52.6	CHINA	92,656	42.5
MALAYSIA	24,782	17.9	MALAYSIA	38,325	17.6
INDIA	15,101	10.9	SAUDI ARABIA	33,418	15.3
SAUDI ARABIA	10,948	7.9	KOREA, REPUBLIC OF	24,710	11.3
PAKISTAN	9,795	7.1	PAKISTAN	12,921	5.9
Other ASIA	5,179	3.7	Other ASIA	16,036	7.4
% of Total May Exports	9.1		% of Total April Exports	15.3	
EUROPEAN UNION	97,029	100.0	EUROPEAN UNION	58,840	100.0
UNITED KINGDOM	35,865	37.0	BELGIUM	31,212	53.0
BELGIUM	26,824	27.6	UNITED KINGDOM	15,640	26.6
LUXEMBOURG	17,330	17.9	GERMANY	5,346	9.1
NETHERLANDS	12,690	13.1	NETHERLANDS	3,822	6.5
GERMANY	2,889	3.0	SWEDEN	1,850	3.1
Other EU	1,430	1.5	Other EU	970	1.6
% of Total May Exports	6.4		% of Total April Exports	4.1	
Total Value of May Exports	1,524,682		Total Value of April Exports	1,427,990	

Source: CSO, International Trade Statistics, 2008 (*) Provisional
Some countries are members of both SADC and COMESA

Zambia's Major Imports by Broad Economic Category (BEC) for May and April 2009

The total value of imports in May 2009 was estimated at K1,823.0 billion compared to K1,563.5 billion in April 2009. The most prominent imports in May 2009 were fuels & lubricants and industrial supplies which collectively accounted for 65.8 percent in

May. Other notable imports in May and April 2009 were Capital goods (excluding transport equipment), parts & accessories, transport equipment, parts & accessories; and consumer goods collectively accounted for 29.1 and 40.4 percent, respectively.

Imports by Broad Economic Category (BEC) sections, May and April 2009* (K 'Millions)

Code	Description	May- 09*		Apr-09*	
		Value (K' Millions)	% Share	Value (K' Millions)	% Share
1	Food and beverages	90,191	4.9	83,882	5.4
2	Industrial supplies not elsewhere specified	442,186	24.3	602,891	38.6
3	Fuels and lubricants	757,153	41.5	241,356	15.4
4	Capital goods (excl transport equipment), parts & accessories	311,986	17.1	340,917	21.8
5	Transport equipment, parts and accessories thereof	122,877	6.7	142,820	9.1
6	Consumer goods not elsewhere specified	96,207	5.3	148,341	9.5
7	Goods not elsewhere specified	2,437	0.1	3,258	0.2
Total:		1,823,036	100.0	1,563,464	100.0

Source: CSO, International Trade Statistics, 2009;

Note: (*) Provisional

Imports by International Standard Industrial Classification (ISIC), May 2009

Zambia's major import products (by ISIC) in May 2009 were under the manufacturing sector accounting for 55.4 percent of which the prominent was the manufacturing of machinery for mining, quarrying & construction with 8.5 percent; manufacture

of fertilizers & nitrogen compounds (7.4 percent); and manufacture of motor vehicles (6.8 percent). Other major import products were from the mining & quarrying sector with 43.8 percent.

Total Imports by (ISIC) Sections, May 2009* (K' Millions)

CODE	DESCRIPTION	May-09*	
		Value (K' Millions)	% Share
D	Manufacturing	1,009,224	55.4
Of which:	Manufacture of machinery for mining, quarrying and construction	85,649	8.5
	Manufacture of fertilizers and nitrogen compounds	74,799	7.4
	Manufacture of motor vehicles	68,909	6.8
	Manufacture of television and radio transmitters and apparatus for line telephony and line telegraphy	42,043	4.2
	Manufacture of machinery for food, beverage and tobacco processing	38,111	3.8
	Manufacture of basic iron and steel	37,807	3.7
	Manufacture of other chemical products n.e.c.	35,714	3.5
	Manufacture of vegetable and animal oils and fats	30,946	3.1
	Manufacture of other fabricated metal products n.e.c.	29,583	2.9
	Manufacture of plastics in primary forms and of synthetic rubber	28,141	2.8
	Manufacture of refined petroleum products	27,721	2.7
	Manufacture of basic chemicals, except fertilizers and nitrogen compounds	27,478	2.7
	Others Manufacturing	482,322	47.8
C	Mining and quarrying	797,903	43.8
A	Agriculture, hunting and forestry	14,212	0.8
O	Other community, social and personal service activities	563	0.0
B	Fishing	539	0.0
E	Electricity, gas and water supply	536	0.0
	Other Sections	59	0.0
Total:		1,823,036	100.0

Source: CSO, International Trade Statistics, 2009;
(*) Provisional

Zambia's Major Imports by the Harmonised Coding System (HS) in May 2009

Zambia's major import product in May 2009 was mineral fuels, oils & product of their distillation; etc accounting for 42.2 percent. Other import products were boilers, machinery and mechanical appliance; parts;

vehicles o/t railway/Tramway roll-stock, parts and accessories; electrical machinery equipment parts thereof; fertilizers and ores, slag and ash, accounting for 29.4 percent.

Zambia's Major Imports by HS Chapters for May 2009*, K' Millions

Chapter Code	Product Description	Value (K' Millions)	% Share
27	Mineral fuels, oils & product of their distillation; etc	769,029	42.2
Of which:	Petroleum oils and oils obtained from bituminous m	732,070	95.2
	Gas oils.	8,923	1.2
	Cutting oil, grease cutting oils, cleaning oils etc.	7,189	0.9
	Bitumen and asphalt; natural asphaltites and asphalt	4,903	0.6
	Base oils suitable only for further processing.	2,044	0.3
	Other coal, not agglomerated, nes	1,957	0.3
	Other oils.	1,875	0.2
	Other paraffin wax... And similar products, nes -	1,461	0.2
	Bituminous mixtures based on natural asphalt, bitumen	1,456	0.2
	White spirit.	1,388	0.2
	Rest of Chapter	5,762	0.7
84	Boilers, machinery & mechanical appliance; parts	223,954	12.3
87	Vehicles o/t railw/tranw rool-stock, pts & accessories	96,704	5.3
85	Electrical machinery equip parts thereof; sound recorder etc	86,446	4.7
31	Fertilisers	74,656	4.1
26	Ores, slag and ash	54,477	3.0
73	Articles of iron and steel	46,285	2.5
39	Plastics and articles thereof	44,758	2.5
38	Miscellaneous chemical products	31,929	1.8
72	Iron and steel	30,201	1.7
	Other chapters	364,597	20.0
Total:		1,823,036	100.0

Source: CSO, International Trade Statistics, 2009;

Note: (*) Provisional

Zambia's Major Import Sources by Products, May 2009

The major source of Zambia's imports in May 2009 was Kuwait accounting for 40.2 percent of the total value of imports. The major import products from Kuwait were Petroleum oils and oils obtained from bituminous, accounting for 100 percent.

The second main source of Zambia's imports in May 2009 was South Africa accounting for 30.0 percent. The major import products

were Potassium chloride (4.5 percent); Parts of machinery of 84.74 (3.0 percent); mineral & chemicals fertilizers with nitrogen (2.3 percent); and other fertilizers, nes (2.1 percent).

Other notable sources of Zambia's imports were Congo DR, China and India collectively accounting for 9.5 percent of Zambia's total imports in May 2009.

Zambia's Major Import Sources by Products, May 2009* (K 'Millions)

Country / Hs-Code	Description	May-09	
		Value (K' Millions)	% Share
KUWAIT		732,069	100.0
27090000	Petroleum oils and oils obtained from bituminous	732,069	100.0
01019000	Other	0	0.0
01061100	Mammals—Primates	0	0.0
01069000	Other live animals	0	0.0
02013000	Boneless	0	0.0
02022000	Frozen unboned bovine meat (excl. carcasses)	0	0.0
02032900	Frozen swine meat, nes	0	0.0
02041000	Fresh or chilled lamb carcasses and half carcasses	0	0.0
02045000	Fresh, chilled or frozen goat meat	0	0.0
02071300	Fresh or chilled cuts and offal of chickens	0	0.0
	Other Products	0	0.0
	% of Total May Imports	40.2	
SOUTH AFRICA		547,600	100.0
31042000	Potassium chloride	24,563	4.5
84749000	Parts of machinery of 84.74	16,280	3.0
31052000	Mineral or chemical fertilizers with nitrogen,	12,418	2.3
31059000	Other fertilizers, nes	11,512	2.1
15111000	Crude palm oil	7,232	1.3
27101950	Cutting oil, grease cutting oils, cleaning oils etc.	7,187	1.3

Country / Hs-Code	Description	May-09	
		Value (K' Millions)	% Share
84378000	Machinery for milling or working cereals or dried vegetables	7,158	1.3
31023000	Ammonium nitrate	6,574	1.2
87089900	Parts and accessories, nes, for vehicles of 87.01	6,029	1.1
84138100	Pumps for liquids, nes	5,934	1.1
Other Products		442,714	80.8
% of Total May Imports		30.0	
CONGO DR		67,647	100.0
26030000	Copper ores and concentrates	45,553	67.3
26050000	Cobalt ores and concentrates	8,924	13.2
84748000	Other machinery for earth, stone, ores, etc, nes	3,602	5.3
84295100	Self-propelled front-end shovel loaders	3,397	5.0
84304900	Boring or sinking machinery (excl. self-propelled)	2,165	3.2
38249000	Chemical products and residual products of chemical	1,824	2.7
72149900	Iron/steel bars and rods, hot-rolled, hot-drawn or hot extruded, nes	1,078	1.6
82051000	Drilling, threading or tapping hand tools	398	0.6
87052000	Mobile drilling derricks	358	0.5
84314900	Parts of machinery of 84.26, 84.29 and 84.30, nes	85	0.1
Other Products		262	0.4
% of Total May Imports		3.7	
CHINA		64,073	100.0
85176100	Base stations	13,339	20.8
90283000	Electricity meters	5,899	9.2
84749000	Parts of machinery of 84.74	5,291	8.3
17024000	Glucose and glucose syrup, containing >=20% but <5	5,050	7.9
73082000	Towers and lattice masts of iron or steel	4,975	7.8
90183100	Syringes, used in medical, surgical, dental or vet	2,056	3.2
84186100	Other refrigerating or freezing equip...Heat pumps	1,999	3.1
87042300	Goods vehicles, with diesel or semi-diesel engines	1,390	2.2
73083000	Doors, window-frames and thresholds for doors of	968	1.5
87041000	Dumpers for off-highway use	953	1.5
Other Products		22,154	34.6
% of Total May Imports		3.5	
INDIA		41,808	100.0
30049000	Other medicaments of mixed or unmixed products,	5,127	12.3
84742000	Crushing or grinding machines for earth, stone, ores, etc	4,707	11.3
84748000	Other machinery for earth, stone, ores, etc, nes	2,736	6.5
84749000	Parts of machinery of 84.74	1,956	4.7
87029090	Motor vehicles for transport of persons	1,534	3.7
73261100	Grinding balls... for mills, forged or stamped,	1,373	3.3
63090000	Worn clothing and other worn articles	1,354	3.2
74072900	Bars, rods and profiles of copper alloys, nes	1,257	3.0
39206310	Plates..., of unsaturated polyesters, not reinforce	1,083	2.6
88031000	Propellers and rotors and parts thereof	1,065	2.5
Other Products		19,617	46.9
% of Total May Imports		2.3	
Other Destination		369,839	20.3
Total Value of May Imports		1,823,036	

Source: CSO, International Trade Statistics, 2009;

Note: (*) Provisional

Import Market Shares by Regional Groupings, May and April 2009

The Asian market was the largest source of Zambia's imports accounting for 51.4 and 26.7 percent in May and April 2009, respectively. Within the Asian market, Kuwait was the major source of Zambia's imports accounting for 78.2 and 51.7 percent in May and April 2009, respectively. It was followed by China with 6.8 percent in May 2009, while in April 2009 it was followed by India with 15.0 percent. Other key market sources were Japan and United Arab Emirate.

The Southern African Development Community (SADC) regional grouping of countries was the second largest source of Zambia's imports accounting for 36.8 and 56.6 percent in May and April 2009, respectively. Within the SADC region, South Africa was the major source of Zambia's imports accounting for 81.6 and 68.9 percent in May and April 2009, respectively. Other key market sources were Congo DR, Zimbabwe, Mauritius, Mozambique and Malawi, in May 2009.

The European Union (EU) was the third largest source of Zambia's imports with 7.7 and 11.2 percent in May and April 2009, respectively. Within the EU, Germany was the dominant source in May 2009 accounting for 29.8 percent while in April 2009 the United Kingdom was the dominant source with 28.0 percent. The United Kingdom was the second dominant source in May 2009 with 23.3 percent while Denmark was the second dominant source in April 2009 with 16.9

percent. Other notable sources were Sweden, Belgium, and Netherlands.

The Common Market for Eastern and Southern Africa (COMESA) grouping of countries was the fourth largest source of Zambia's imports accounting for 6.7 and 18.0 percent in May and April 2009, respectively. Within COMESA, Congo DR was the dominant market in May and April 2009 with 55.3 and 59.3 percent, respectively. Other notable sources were Mauritius and Malawi.

Import Market shares by major Regional groupings, May * and April 2009 (K' million)

GROUPING	May-09*		GROUPING	Apr-09®	
	Value (K' Millions)	% Share		Value (K' Millions)	% Share
ASIA	936,157	100.0	ASIA	417,048	100.0
KUWAIT	732,069	78.2	KUWAIT	215,592	51.7
CHINA	64,073	6.8	INDIA	62,381	15.0
INDIA	41,808	4.5	CHINA	56,533	13.6
JAPAN	39,918	4.3	JAPAN	25,099	6.0
UNITED ARAB EMIRATES	27,043	2.9	UNITED ARAB EMIRATES	19,645	4.7
Other ASIA	31,244	3.3	Other ASIA	37,798	9.1
% of Total May Imports	51.4		% of Total April Imports	26.7	
SADC	670,762	100.0	SADC	885,005	100.0
SOUTH AFRICA	547,600	81.6	SOUTH AFRICA	609,898	68.9
CONGO DR	67,647	10.1	CONGO DR	167,098	18.9
ZIMBABWE	17,400	2.6	ZIMBABWE	34,022	3.8
MAURITIUS	8,827	1.3	MAURITIUS	27,367	3.1
MOZAMBIQUE	8,220	1.2	MALAWI	14,822	1.7
Other SADC	21,068	3.1	Other SADC	31,799	3.6
% of Total May Imports	36.8		% of Total April Imports	56.6	
EUROPEAN UNION	140,104	100.0	EUROPEAN UNION	175,180	100.0
GERMANY	41,744	29.8	UNITED KINGDOM	49,083	28.0
UNITED KINGDOM	32,661	23.3	DENMARK	29,536	16.9
BELGIUM	17,934	12.8	GERMANY	25,858	14.8
SWEDEN	15,787	11.3	SWEDEN	14,301	8.2
NETHERLANDS	10,110	7.2	BELGIUM	12,470	7.1
Other EU	21,869	15.6	Other EU	43,932	25.1
% of Total May Imports	7.7		% of Total April Imports	11.2	
COMESA	122,306	100.0	COMESA	281,990	100.0
CONGO DR	67,647	55.3	CONGO DR	167,098	59.3
KENYA	21,770	17.8	ZIMBABWE	34,022	12.1
ZIMBABWE	17,400	14.2	KENYA	28,718	10.2
MAURITIUS	8,827	7.2	MAURITIUS	27,367	9.7
MALAWI	3,168	2.6	MALAWI	14,822	5.3
Other COMESA	3,496	2.9	Other COMESA	9,964	3.5
% of Total May Imports	6.7		% of Total April Imports	18.0	
Total Value of May Imports	1,823,036		Total Value of April Imports	1,563,464	

Source: CSO, International Trade Statistics, 2009;

(*) Provisional

(R) Revised figures

Some countries are members of both SADC and COMESA

DEMOGRAPHY

Male orphans and vulnerable children (OVCs) likely to initiate early sexual activity compared with females OVCs!

The 2007 Zambia Demographic and Health Survey (ZDHS) results show that male OVCs were more likely to initiate early sexual activity before age 15 (21 percent) than female OVCs (9 percent). However the proportions of male and female non-OVCs who initiated sex by age 15 were relatively similar, 16 percent for women and 15 percent for men.

The results further show that more male OVCs had sexual intercourse before age 15 compared with male non-OVCs (21 percent and 15 percent respectively). Among females however, results show that a smaller proportion (9 percent) of OVCs had sexual intercourse before age 15 compared with 16 percent of the non-OVCs.

Percentage of De-jure children age 15-17 who had sexual intercourse before exact age 15, total and by OVC status, and ratio of percentage for OVC to the percentage for non-OVC by sex, Zambia 2007

OVC status	Female		Male	
	Percentage who had sexual intercourse before exact age 15	Number in the sample	Percentage who had sexual intercourse before exact age 15	Number in the Sample
OVC	9	332	21	299
Non-OVC	16	629	15	576
Total	13	961	17	875
Ratio	0.55		1.37	

Source: Zambia Demographic and Health Survey 2007

About 52 percent of births occur at home, 2007 ZDHS reveals!

Delivering of a child in a health facility is an important factor in reducing deaths arising from the complications of pregnancy. If a complication arises during delivery, a skilled health worker can manage the complication or refer the mother to the next level of health facility.

According to the 2007 Zambia Demographic and Health Survey (ZDHS) results, about half of all births (52 percent) occur at home. Child deliveries that occur in public and private sector facilities were reported at 43 and 5 percent, respectively.

It was further reported that younger women of less than 20 years and women between the age of 20 and 34 years old are more likely to deliver in health institutions (55 and 49 percent, respectively) than women between the age of 35 and 49 years old (36 percent). It was however revealed that deliveries in health institutions decline with an increase in birth order.

Analysis by residence revealed that women in rural areas are more likely to deliver at home at 67 percent than their counterparts in urban areas (16 percent).

Percent distribution of live births in the five years preceding the survey by place of delivery and percentage delivered in a health facility, according to background characteristics, Zambia 2007

Background Characteristic	Public Sector	Health Facility					Any Health Facility	Number of Births in the sample
		Private Sector	Home	Other	Missing	Total		
Total	42.7	5.0	51.7	0.4	0.3	100.0	47.7	6,435
Mother's age at Birth								
<20	50.5	4.7	44.3	0.4	0.1	100.0	55.2	1,102
20-34	43.2	4.9	51.2	0.3	0.4	100.0	48.1	4,485
35-49	29.7	6.1	63.5	0.6	0.0	100.0	35.8	849
Birth Order								
1	59.2	5.3	35.3	0.2	0.1	100.0	64.5	1,270
2 - 3	43.9	5.1	50.2	0.4	0.4	100.0	49.0	2,232
4 - 5	37.4	5.0	56.8	0.4	0.5	100.0	42.4	1,509
6+	31.6	4.8	63.1	0.5	0.1	100.0	36.3	1,425
*Antenatal care visits								
None	2.0	2.0	96.0	0.0	0.0	100.0	4.0	89
1 - 3	43.9	3.2	52.2	0.7	0.0	100.0	47.1	1,500
4+	47.8	6.2	45.7	0.2	0.1	100.0	54.0	2,494
Dont know/missing	(61.1)	(1.3)	(35.5)	(0.0)	(2.2)	(100.0)	(62.3)	(53)
Residence								
Urban	79.0	4.6	15.7	0.3	0.3	100.0	83.7	1,883
Rural	27.6	5.2	66.5	0.4	0.3	100.0	32.8	4,553

Source: Zambia Demographic and Health Survey, 2007

Note: Figures in parentheses are based on 25-49 unweighted cases

(*) includes only the most recent birth in the five years preceding the survey

The results also revealed that women with more than a secondary education (99 percent) are more likely to deliver in a health facility than women with no education (25 percent).

At provincial level, Northern has the highest proportion of deliveries at home with 68 percent. It is followed by Central Province with 66 percent. Lusaka Province was reported to have the lowest proportion of deliveries at home with 22 percent.

Percent distribution of live births in the five years preceding the survey by place of delivery and percentage delivered in a health facility, according to background characteristics, Zambia 2007

Background Characteristic	Health Facility						Any Health Facility	Number of Births in the sample
	Public Sector	Private Sector	Home	Other	Missing	Total		
Total	42.7	5.0	51.7	0.4	0.3	100.0	47.7	6,435
Provinces								
Central	30.4	2.6	66.1	0.3	0.6	100.0	33.0	632
Copperbelt	64.1	11.6	23.4	0.2	0.7	100.0	75.7	880
Eastern	38.4	6.3	54.2	0.8	0.3	100.0	44.8	1,022
Luapula	34.0	1.5	64.3	0.2	0.0	100.0	35.5	577
Lusaka	76.3	1.8	21.6	0.2	0.1	100.0	78.1	736
Northern	25.6	5.5	68.4	0.2	0.3	100.0	31.0	1,042
North-western	35.6	6.4	57.6	0.2	0.2	100.0	42.0	402
southern	37.5	0.1	62.0	0.3	0.1	100.0	37.6	683
Western	37.5	7.7	53.9	0.7	0.2	100.0	45.2	461
Mother's Education								
No education	20.6	4.5	73.5	0.7	0.6	100.0	25.2	870
Primary	38.3	4.7	56.6	0.2	0.2	100.0	43.0	4,089
Secondary	66.1	4.9	27.9	0.6	0.5	100.0	71.0	1,320
more than secondary	80.2	19.0	0.8	0.0	0.0	100.0	99.2	157
Wealth quintile								
Lowest	23.5	4.9	71	0.3	0.3	100.0	28.4	1,524
Second	24.6	4.8	69.4	0.7	0.5	100.0	29.4	1,445
Middle	33.2	4.6	61.8	0.3	0.0	100.0	37.8	1,351
Fourth	68.2	3.8	27.5	0.4	0.1	100.0	72.0	1,227
Highest	84.0	7.9	7.5	0.0	0.6	100.0	91.9	889

Source: Zambia Demographic and Health Survey, 2007

AGRICULTURE

Maize Production expected to increase reveals the 2008/2009 Crop Forecasting Survey

The 2008/2009 Crop Forecasting Survey (CFS) results show that production of Maize is expected to increase by 30.7 percent from 1,445,655 metric tonnes during the 2007/2008 agricultural season to 1,888,773 during the 2008/2009 agricultural season.

The results further show that area planted to maize remained relatively the same increasing slightly by 0.1 percent from 1,125,024 hectares during the previous season to 1,125,849 during the 2008/2009 agricultural season. Furthermore, area harvested to maize is expected to increase by 37.3 percent from 663,990 hectares during the

2007/2008 agricultural season to 911,876 hectares during the 2008/2009 agricultural season.

The yield rate of maize per hectare is also expected to increase by 30.6 percent from 1.3 metric tonnes per hectare from the previous season to 1.7 metric tonnes per hectare during the 2008/2009 agricultural season.

Overall, the area planted and harvested to all major staple food crops also increased compared to the 2007/2008 agricultural season.

Crop Production Estimates Based on the 2008/2009 Crop Forecasting Survey

Crop	Area planted (Ha)			Area harvested (Ha)			Expected Production (Mt)			Yield rate (Mt/Ha)		
	2007/2008	2008/2009	% Change	2007/2008	2008/2009	% Change	2007/2008	2008/2009	% Change	2007/2008	2008/2009	% Change
Maize	1,125,024	1,125,849	0.1	663,990	911,876	37.3	1,445,655	1,888,773	30.7	1.3	1.7	30.6
Sorghum	28,614	40,591	41.9	18,851	32,312	71.4	11,446	21,829	90.7	0.4	0.5	34.4
Rice	29,189	31,032	6.3	20,993	25,582	21.9	30,258	41,929	38.6	1.0	1.4	30.3
Millet	52,526	61,586	17.2	40,863	55,911	36.8	39,163	48,967	25.0	0.7	0.8	6.6
Sunflower	40,080	71,293	77.9	33,079	65,420	97.8	15,405	33,657	118.5	0.4	0.5	22.8
Groundnuts	174,021	216,086	24.2	145,896	204,033	39.8	84,598	120,564	42.5	0.5	0.6	14.8
Soya beans	35,440	64,683	82.5	33,081	62,880	90.1	59,177	118,799	100.8	1.7	1.8	10.0
Seed Cotton	143,278	103,154	(28.0)	104,749	97,144	(7.3)	89,106	87,018	(2.3)	0.6	0.8	35.6
Irish Potatoes	1,212	1,305	7.7	1,151	1,233	7.1	10,524	21,285	102.3	8.7	16.3	87.8
Burley tobacco	5,930	11,638	96.3	5,720	11,084	93.8	7,471	18,487	147.5	1.3	1.6	26.1
Virginia tobacco	6,299	7,785	23.6	6,094	7,727	26.8	15,910	8,758	(45.0)	2.5	1.1	(55.5)
Mixed beans	67,493	83,640	23.9	63,129	79,283	25.6	50,488	46,735	(7.4)	0.7	0.6	(25.3)
Bambara nuts	2,592	4,297	65.8	2,196	4,080	85.8	2,843	4,930	73.4	1.1	1.1	4.6
Cowpeas	4,544	12,963	185.3	2,571	11,185	335.0	1,841	7,468	305.6	0.4	0.6	42.2
Sweet potatoes	38,184	64,341	68.5	34,991	60,638	73.3	124,414	200,450	61.1	3.3	3.1	(4.4)
Paprika	476	312	(34.5)	462	291	(37.0)	1,050	1,020	(2.9)	2.2	3.3	48.2
Pineapples	134	392	192.5	52	336	546.2	-	1,719	-	-	4.4	-
Wheat	19,365	34,296	77.1	19,358	34,296	77.2	113,242	195,456	72.6	5.8	5.7	(2.5)

Source: CSO/MACO 2008/2009 Crop Forecasting Survey

LAYMAN & STATISTICS

Domestic Exports: These are goods originating from the exporting countries.

Re-exports: This refers to goods imported into the country and then exported in the same form or after minor improvements. For example, blending, packing and repairing.

Trade Surplus: this is a situation where a country is exporting more than it is importing.

SITC: Stands for Standard International Trade Classification. It is a trade statistical nomenclature mainly used in trade statistical analysis.

Index of Industrial Production: Is defined as the measure of the changes in the levels of production in the economy compared with base year production. The index does not measure the actual production levels but gives a comparative representation of the performance of the various sub-sectors.

Agricultural Season: This refers to the period starting from 1st October and ending 30th September the following year.

SELECTED SOCIO-ECONOMIC INDICATORS

GROSS DOMESTIC PRODUCT (GDP) 2000-2008

	2000	2001	2002	2003	2004	2005	2006	2007	2008*
Total GDP at Current Prices (K'Billion)	10,071.9	13,132.7	16,260.4	20,479.2	25,916.8	31,944.6	38,464.1	46,194.8	55,501.1
Total GDP at Constant 1994 Prices (K'Billion)	2,499.0	2,621.3	2,707.9	2,846.5	3,000.1	3,160.3	3,356.8	3,564.0	3,776.7
GDP per capita at Current Prices	1,028,587	1,301,621	1,562,085	1,906,038	2,337,020	2,792,006	3,260,038	3,798,753	4,430,948
GDP per capita at Constant 1994 Prices	255,213	259,806	260,138	264,930	270,528	276,215	284,507	293,080	301,511
GDP Growth rate at Constant 1994 Prices	3.6	4.9	3.3	5.1	5.4	5.3	6.2	6.2	6.0

PERCENTAGE CHANGES IN G.D.P. BY KIND OF ECONOMIC ACTIVITY - CONSTANT 1994 PRICES

KIND OF ECONOMIC ACTIVITY	2000	2001	2002	2003	2004	2005	2006	2007	2008*
<i>Agriculture, Forestry and Fishing</i>	1.6	(2.6)	(1.7)	5.0	4.3	(0.6)	2.2	0.4	(0.1)
<i>Agriculture</i>	1.0	(6.0)	(6.3)	8.0	6.1	(4.0)	3.0	(2.7)	(4.0)
<i>Forestry</i>	4.0	4.3	4.3	4.3	4.3	3.6	1.4	3.7	3.7
<i>Fishing</i>	(1.0)	(5.0)	(0.7)	(0.7)	(0.7)	0.5	1.8	1.8	1.8
<i>Mining and Quarrying</i>	0.1	14.0	16.4	3.4	13.9	7.9	7.3	3.6	5.9
<i>Metal Mining</i>	(0.3)	15.0	17.1	3.3	13.5	7.1	9.0	4.4	6.0
<i>Other mining and quarrying</i>	13.3	(15.0)	(13.0)	10.7	35.8	42.9	(45.8)	(45.5)	0.3
PRIMARY SECTOR	1.1	1.9	3.8	4.5	7.5	2.5	4.1	1.7	2.3
<i>Manufacturing</i>	3.6	4.2	5.7	7.6	4.7	2.9	5.7	3.0	3.6
<i>Food, Beverages and Tobacco</i>	0.6	5.3	5.4	8.6	5.8	3.6	8.9	7.6	4.5
<i>Textile, and leather industries</i>	2.2	2.3	6.2	3.2	(1.9)	(2.9)	(1.3)	(19.5)	(16.7)
<i>Wood and wood products</i>	(0.3)	5.7	7.5	11.4	4.2	3.6	0.7	3.7	13.5
<i>Paper and Paper products</i>	(1.3)	3.8	2.2	8.2	2.5	10.6	0.3	0.7	25.4
<i>Chemicals, rubber and plastic products</i>	41.2	4.3	10.0	4.9	8.5	3.2	4.6	4.2	6.3
<i>Non-metallic mineral products</i>	4.5	3.5	1.7	14.9	14.4	7.4	(5.2)	2.3	3.3
<i>Basic metal products</i>	4.3	(18.0)	4.3	15.1	3.1	(2.0)	1.9	(4.8)	30.5
<i>Fabricated metal products</i>	11.3	(8.0)	(4.0)	5.3	4.8	7.4	5.0	7.8	(2.8)
<i>Electricity, Gas and Water</i>	1.2	12.6	(5.2)	0.4	(1.7)	5.4	10.5	1.0	(1.2)
<i>Construction</i>	6.5	11.5	17.4	21.6	20.5	21.2	14.4	20.0	9.9
SECONDARY SECTOR	4.0	7.5	7.2	10.8	9.1	10.0	9.8	10.0	6.0
<i>Wholesale and Retail trade</i>	2.3	5.4	5.0	6.1	5.0	2.4	2.0	2.4	2.6
<i>Restaurants, Bars and Hotels</i>	12.3	24.4	4.9	6.9	6.4	11.7	16.1	9.6	5.7
<i>Transport, Storage and Communications</i>	2.4	2.8	1.8	4.8	6.4	11.0	22.1	19.2	15.8
<i>Rail Transport</i>	3.6	7.6	6.0	(8.1)	(1.8)	(11.6)	(2.6)	(18.7)	(20.2)
<i>Road Transport</i>	1.9	0.5	1.9	3.9	4.2	6.3	6.4	6.4	13.2
<i>Air Transport</i>	6.3	10.6	(8.4)	3.9	18.1	10.8	33.5	24.1	13.7
<i>Communications</i>	0.6	0.6	7.9	10.0	5.0	23.2	40.5	33.6	21.1
<i>Financial Institutions and Insurance</i>	(0.6)	0.1	3.5	3.5	3.5	3.3	4.0	4.1	5.4
<i>Real Estate and Business services</i>	17.0	3.5	4.4	4.0	4.0	3.2	3.2	3.1	3.1

KIND OF ECONOMIC ACTIVITY	2000	2001	2002	2003	2004	2005	2006	2007	2008*
<i>Community, Social and Personal Services</i>	(0.5)	5.8	1.6	1.6	0.6	11.4	9.0	12.5	14.5
<i>Public Administration & Defence/Public sanitary services</i>	(0.7)	1.0	(1.0)	0.2	0.2	6.2	(8.7)	14.8	3.4
<i>Education</i>	(0.7)	13.5	7.0	3.0	0.3	22.2	35.3	13.6	24.4
<i>Health</i>	(0.7)	16.5	1.0	2.5	(0.8)	(2.2)	5.2	1.0	19.5
<i>Recreation, Religious, Culture</i>	(0.7)	10.0	(2.0)	4.5	4.3	34.1	22.8	9.3	32.2
<i>Personal Services</i>	3.5	3.5	3.5	3.5	3.5	3.5	3.5	3.5	3.5
TERTIARY SECTOR	4.1	4.7	3.8	4.5	4.2	5.4	6.7	7.1	7.2
<i>Less: FISIM</i>	2.5	2.5	2.5	2.5	2.5	2.5	2.5	2.5	2.5
TOTAL GROSS VALUE ADDED	3.4	4.6	4.6	6.0	6.2	5.8	7.0	6.7	6.0
<i>Taxes less subsidies on Products</i>	4.6	7.0	(6.7)	(2.7)	(2.7)	(0.1)	(3.1)	(0.3)	6.0
TOTAL G.D.P. AT MARKET PRICES	3.5	4.9	3.3	5.1	5.4	5.3	6.2	6.2	6.0

Source: CSO, National Accounts Statistics

*Revised estimates

INDEX OF INDUSTRIAL PRODUCTION, 2006 TO 2008 Q2 (2000=100)

PERIOD	TOTAL INDEX	MINING				MANUFACTURING									TOTAL ELECTRICITY
		TOTAL MINING	Coal	Non-ferrous Ore	Stone Quarrying	TOTAL MANUFACTURING	Food, Beverages & Tobacco	Textile, Clothing & Leather	Wood & Wood Products	Paper & Paper Products	Chemicals, Rubbers & Plastics	Non-metallic Mineral Products	Basic Metal Industries	Fabricated Metal Products	
WEIGHT	1.000	0.350	0.005	0.242	0.103	0.511	0.235	0.060	0.006	0.017	0.059	0.025	0.009	0.100	0.139
2000	100.0	100.0	100.0	100.0	100.0	100.0	100.0	100.0	100.0	100.0	100.0	100.0	100.0	100.0	100.0
2006 Q1*	147.8	214.3	35.4	217.0	215.9	108.0	126.8	62.9	166.6	93.3	111.0	139.1	66.2	83.8	126.7
2006 Q2*	144.8	194.4	58.9	209.0	166.2	115.0	144.8	46.8	164.1	91.8	87.6	163.6	62.3	95.3	129.6
2006 Q1+Q2	146.3	204.4	47.2	213.0	191.0	111.5	135.8	54.9	165.3	92.5	99.3	151.4	64.2	89.6	128.1
2006 Q3	143.9	179.9	45.6	176.2	194.5	125.7	162.5	55.7	156.5	72.6	96.6	150.2	74.2	103.8	120.3
2006 Q4	142.4	158.3	9.5	150.3	183.7	137.5	185.4	98.0	157.2	91.2	69.7	143.9	70.9	99.1	120.7
2006	144.7	186.7	37.4	188.1	190.1	121.5	154.9	65.9	161.1	87.2	91.2	149.2	68.4	95.5	124.3
2007 Q1*	147.3	206.9	8.5	196.6	239.8	111.3	129.0	61.1	176.4	92.4	116.6	146.8	64.5	91.0	129.5
2007 Q2*	153.4	211.5	10.5	200.5	246.4	121.4	162.1	42.4	171.6	92.7	95.4	161.0	61.1	85.6	125.1
2007 Q1+Q2	143.4	189.2	9.5	198.5	243.1	116.4	145.6	51.7	174.0	92.6	106.0	153.9	62.8	88.3	127.3
2007 Q3*	151.9	191.2	6.0	196.9	186.2	133.7	178.3	33.1	164.6	69.2	96.2	153.3	67.2	121.3	119.5
2007 Q4*	159.5	195.8	8.3	191.4	214.5	143.8	197.1	75.6	155.3	96.9	72.0	149.6	67.8	114.1	126.2
2007	152.5	202.9	8.6	196.8	226.0	125.3	162.4	52.8	168.4	88.8	97.2	152.9	64.7	100.0	125.5
2008 Q1*	160.5	243.7	7.4	228.7	289.4	112.0	131.9	52.3	205.3	107.4	121.7	128.4	80.2	88.8	129.5
2008 Q2**	159.6	219.3	0.0	196.8	281.9	127.5	176.2	36.0	216.8	123.1	92.8	156.9	86.6	79.6	127.4
2008 Q1+Q2	153.4	212.5	3.7	212.8	285.6	119.7	154.0	44.2	211.0	115.3	107.3	142.7	83.4	84.2	128.5
YEAR-ON-YEAR PERCENTAGE CHANGES e.g. Q2 2007/Q2 2006															
2007 Q1	(0.3)	(3.5)	(76.0)	(9.4)	11.1	3.1	1.8	(3.0)	5.9	(0.9)	5.0	5.5	(2.6)	8.5	2.3
2007 Q2	6.0	8.8	(82.2)	(4.1)	48.3	5.6	12.0	(9.4)	4.6	1.0	8.9	(1.6)	(1.9)	(10.2)	(3.4)
2007 Q1+Q2	(2.0)	(7.4)	(79.9)	(6.8)	27.3	4.4	7.2	(5.7)	5.2	0.0	6.7	1.7	(2.2)	(1.4)	(0.6)
2007 Q3	5.5	6.3	(86.8)	11.7	(4.2)	6.4	9.7	(40.6)	5.2	(4.6)	(0.4)	2.1	(9.5)	16.9	(0.7)
2007 Q4	12.0	23.7	(12.8)	27.3	16.7	4.6	6.3	(22.9)	(1.2)	6.2	3.3	4.0	(4.4)	15.1	4.6
2007	5.4	8.7	(77.1)	4.6	18.9	3.1	4.9	(19.9)	4.5	1.8	6.6	2.5	(5.5)	4.8	1.0
2008 Q1	9.0	17.8	(12.8)	16.3	20.7	0.6	2.2	(14.3)	16.4	16.3	4.4	(12.5)	24.3	(2.4)	(0.1)
*2008 Q2	4.0	3.7	(99.7)	(1.8)	14.4	5.0	8.7	(15.0)	26.4	32.8	(2.8)	(2.5)	41.8	(7.0)	1.8
*2008 Q1+Q2	7.0	12.4	(58.0)	7.2	17.5	2.9	5.8	(14.6)	21.3	24.5	1.2	(7.3)	32.8	(4.6)	0.9

Source: Index of Industrial Production, CSO

Note: * Revised

** Preliminary

PROJECTED MID-YEAR POPULATION 2000-2009

	2000	2001	2002	2003	2004	2005	2006	2007	2008	2009
<i>Total Population</i>	9,885,591	10,089,492	10,409,441	10,744,380	11,089,691	11,441,461	11,798,678	12,160,516	12,525,791	12,896,830
<i>Population Growth Rate</i>	2.5	3.1	3.1	3.1	3.1	3.1	3.0	3.0	2.9	2.9
<i>Life Expectancy at Birth</i>	50.0	51.8	51.9	52.4	52.4	52.6	51.9	51.4	51.3	51.2
POPULATION BY PROVINCE										
<i>Central</i>	1,012,257	1,032,574	1,066,992	1,103,387	1,141,256	1,180,124	1,219,980	1,260,491	1,301,776	1,343,835
<i>Copperbelt</i>	1,581,221	1,611,569	1,662,155	1,714,225	1,767,165	1,820,443	1,874,081	1,927,576	1,980,824	2,034,012
<i>Eastern</i>	1,306,173	1,348,070	1,391,690	1,436,120	1,482,290	1,530,118	1,579,960	1,631,890	1,684,910	1,740,180
<i>Luapula</i>	775,353	791,067	817,326	845,076	873,969	903,746	934,317	965,605	997,579	1,030,572
<i>Lusaka</i>	1,391,329	1,413,010	1,453,690	1,495,730	1,538,000	1,579,769	1,620,730	1,660,070	1,697,730	1,733,830
<i>Northern</i>	1,258,696	1,277,250	1,315,650	1,357,540	1,401,340	1,445,730	1,490,330	1,534,170	1,577,310	1,619,980
<i>North-western</i>	583,350	596,010	616,496	638,004	660,322	683,367	707,074	731,351	756,261	781,800
<i>Southern</i>	1,212,124	1,235,134	1,275,470	1,318,161	1,362,382	1,407,433	1,453,324	1,499,462	1,545,880	1,592,864
<i>Western</i>	765,088	774,929	795,247	816,983	839,757	863,294	887,540	912,226	937,419	963,107
Zambia Surface Area										752,612 Sq.Km

Source: CSO, Population Projections Report

Note: 2000 figures are from the 2000 Census of Population and Housing while the 2001 to 2009 figures are the Population Projections Report

POVERTY TRENDS 1991-2006

Residence/Province	Indicators	1991	1993	1996	1998	2004	2006*
<i>Total Zambia</i>	Total Poor	70	84	78	73	68	64
	Extremely Poor	61	76	66	58	53	51
	Moderately Poor	10	8	12	15	15	14
	Non-Poor	29	16	22	27	32	32
<i>Rural areas</i>	Total Poor	88	92	80	83	78	80
	Extremely Poor	78	89	79	71	65	67
	Moderately Poor	6	4	10	12	13	14
	Non-Poor	15	8	11	17	22	20
<i>Urban areas</i>	Total Poor	15	8	11	17	22	34
	Extremely Poor	49	45	60	56	53	20
	Moderately Poor	44	56	44	36	34	14
	Non-Poor	14	14	16	20	18	66
Provinces							
<i>1. Central</i>	Total Poor	70	81	84	77	76	72
	Extremely Poor	57	69	70	63	63	59
	Moderately Poor	13	8	14	14	12	13
	Non-Poor	31	23	16	23	24	28
<i>2. Copperbelt</i>	Total Poor	61	49	65	65	56	42
	Extremely Poor	51	61	52	47	38	27
	Moderately Poor	14	13	13	18	18	15
	Non-Poor	35	25	36	35	44	58
<i>3. Eastern</i>	Total Poor	85	91	85	79	70	79
	Extremely Poor	75	87	77	66	57	65
	Moderately Poor	6	4	8	13	13	14
	Non-Poor	19	9	15	21	30	21
<i>4. Luapula</i>	Total Poor	84	88	87	82	79	73
	Extremely Poor	65	81	77	69	64	61
	Moderately Poor	8	8	10	13	15	12
	Non-Poor	27	11	13	18	21	27
<i>5. Lusaka</i>	Total Poor	31	39	58	53	48	29
	Extremely Poor	29	55	41	35	29	16
	Moderately Poor	13	11	17	18	19	12
	Non-Poor	57	34	42	47	52	71
<i>6. Northern</i>	Total Poor	84	86	87	81	74	78
	Extremely Poor	79	87	76	66	60	64
	Moderately Poor	8	4	11	15	14	14
	Non-Poor	14	9	13	19	26	21
<i>7. North-western</i>	Total Poor	75	88	90	77	76	72
	Extremely Poor	74	90	80	64	61	57
	Moderately Poor	7	5	10	13	15	15
	Non-Poor	18	5	10	23	24	28
<i>8. Southern</i>	Total Poor	79	87	83	75	69	73
	Extremely Poor	66	86	73	59	54	58
	Moderately Poor	11	5	10	16	14	16
	Non-Poor	22	9	17	25	31	27
<i>9. Western</i>	Total Poor	69	69	69	69	83	84
	Extremely Poor	54	54	54	54	73	73
	Moderately Poor	14	14	14	14	10	10
	Non-Poor	31	31	31	31	17	16

Source: CSO, Living Conditions Monitoring Survey, 1991, 1993, 1996, 1998, 2004 and 2006

Note: (*)Provisional

INFLATION TRENDS 2000-2008

Year	Year on Year Inflation
1990	110.6
1991	99.7
1992	180.7
1993	128.1
1994	38.3
1995	46.0
1996	35.2
1997	18.6
1998	30.6
1999	20.6
2000	30.1
2001	18.7
2002	26.7
2003	17.2
2004	17.5
2005	15.9
2006	8.2
2007	8.9
2008	16.6

Source: CSO, Prices Statistics

HEALTH STATISTICS

Residence/Province	Infant Mortality (Per 1,000 Live Births)				Under-Five Mortality (Per 1000 Live Births)				Maternal Mortality Ratio (Per 100,000 Live Births)				HIV Prevalence			
	1992	1996	2001/2002	2007	1992	1996	2001/2002	2007	1992	1996	2001/2002	2007	1992	1996	2001/2002	2007*
Zambia	107.2	108.9	95.0	70	190.7	196.6	168	-	-	649	729	649	-	-	15.6	14.3
<i>Rural</i>	115.8	117.9	103	-	201.2	204.5	182	-	-	-	-	-	-	-	10.8	10.3
<i>Urban</i>	78.0	91.9	77	-	150.8	173.3	140	-	-	-	-	-	-	-	23.1	19.7
PROVINCE																
<i>Central</i>	114.1	94.6	92	-	210.0	164.5	192	-	-	-	-	-	-	-	15.3	17.5
<i>Copperbelt</i>	68.9	81.9	68	-	144.2	175.4	134	-	-	-	-	-	-	-	19.9	17.0
<i>Eastern</i>	114.1	131.1	84	-	210.0	235.4	166	-	-	-	-	-	-	-	13.7	10.3
<i>Luapula</i>	148.5	157.8	154	-	244.4	254.2	248	-	-	-	-	-	-	-	11.2	13.2
<i>Lusaka</i>	76.8	100.3	70	-	140.8	174.1	137	-	-	-	-	-	-	-	22.0	20.8
<i>Northern</i>	148.5	125.3	113	-	244.4	200.2	187	-	-	-	-	-	-	-	8.3	6.8
<i>North-western</i>	132.0	91.1	74	-	210.3	153.0	130	-	-	-	-	-	-	-	9.2	6.9
<i>Southern</i>	70.5	66.2	76	-	134.2	148.3	148	-	-	-	-	-	-	-	17.6	14.5
<i>Western</i>	132.0	129.1	139	-	210.3	201.2	201	-	-	-	-	-	-	-	13.1	15.2

Source: CSO, ZDHS 1992, 1996, 2001/2002 AND 2007

Note: *Preliminary

Note: The 1996 ZDHS Survey did not have a component for HIV testing

ROAD TRAFFIC ACCIDENT POLICE REPORTS, 2006 TO 2007

POLICE DIVISION/PROVINCE	NUMBER OF ROAD TRAFFIC ACCIDENTS			NUMBER OF PERSONS KILLED			NUMBER OF PERSONS SERIOUSLY INJURED			NUMBER OF PERSONS SLIGHTLY INJURED			ADMISSION OF GUILTY RAISED (kwacha)	
	2006	2007	% Change	2006	2007	% Change	2006	2007	% Change	2006	2007	% Change	2006	2007
<i>Central</i>	1,047	1,382	32	191	158	(17)	520	548	5	376	269	(28)	214,433,570	274,002,608
<i>Copperbelt</i>	4,105	5,400	32	265	301	14	1,031	1,300	26	1,250	1,664	33	1,888,762,000	2,907,262,000
<i>Eastern</i>	632	693	10	79	85	8	159	129	(19)	140	207	48	287,050,916	359,249,000
<i>Luapula</i>	185	190	3	54	51	(6)	166	203	22	17	41	141	212,895,100	332,581,000
<i>Lusaka</i>	10,513	10,889	4	335	413	23	938	915	(2)	2,177	2,158	(1)	1,569,921,500	1,695,469,000
<i>N/Western</i>	549	735	34	32	56	75	185	223	21	126	229	82	77,666,000	203,912,000
<i>Nothern</i>	443	569	28	89	71	(20)	366	391	7	131	217	66	208,817,000	248,637,500
<i>Southern</i>	1,279	1,431	12	100	105	5	407	290	(29)	234	160	(32)	958,622,500	1,106,798,000
<i>Western</i>	342	401	17	25	26	4	191	182	(5)	127	132	4	130,000,000	187,608,500
TOTAL	19,095	21,690	14	1,170	1,266	8	3,963	4,181	6	4,578	5,077	11	5,548,168,586	7,315,519,608

Source: Zambia police, road traffic section

Zambia's Annual Total Exports in Absolute Zambia Kwacha and US Dollar 2000 – 2008*

Flow YEAR	TOTAL EXPORTS	
	ZMK	USD
2000	2,716,557,648,136	869,485,416
2001	3,537,206,913,419	978,788,277
2002	4,069,916,925,012	944,356,533
2003	4,642,039,643,203	979,298,782
2004	7,526,280,115,612	1,577,240,766
2005	9,612,909,460,871	2,176,641,598
2006	13,410,945,234,225	3,681,524,702
2007	18,399,133,746,013	4,617,454,325
2008*	18,653,009,286,684	5,098,688,004
TOTAL:	82,567,998,973,175	20,923,478,403

Source: CSO, International Trade Statistics, 2009;

Note: (*) Provisional

Note: 2000 - 2007 Extracted using Special Trade System while 2008 extracted Using General Trade System

Zambia's Annual Imports in Absolute Zambia Kwacha and US Dollar 2000 – 2008*

Flow YEAR	IMPORTS	
	ZMK	USD
2000	2,751,563,199,592	871,386,492
2001	3,900,496,869,495	1,079,955,769
2002	4,732,881,915,324	1,103,070,912
2003	7,439,867,256,553	1,573,309,968
2004	10,279,302,826,391	2,150,649,040
2005	11,466,668,652,907	2,579,688,391
2006	11,049,770,813,126	3,023,996,472
2007	15,945,289,847,742	4,006,980,387
2008*	18,476,489,239,723	5,060,482,666
TOTAL:	86,042,330,620,853	21,449,520,097

Source: CSO, International Trade Statistics, 2009;

Note: (*) Provisional

Note: 2000 - 2007 extracted using Special Trade System while 2008 extracted using General Trade System

Surveys/Activities being undertaken

- ☞ 2010 Cartographic Mapping
- ☞ 2008 Labour-force Survey
- ☞ 2009 Zambia Sexual Behaviour Survey (ZSBS)

Now Available

- ☞ Employment and Earnings Inquiry Report, January 2006
- ☞ National Accounts Statistics Bulletin No.9 2005
- ☞ Selected Socio-Economic Indicators, 2004 - 2005
- ☞ Labour-Force Survey Report, 2005
- ☞ Gender Based Violence (GBV), 2005
- ☞ 2007 Zambia Demographic and Health Survey (ZDHS)

Soon to be released!

- ☞ Living Conditions Monitoring Survey Report, 2006

Visit us at the 2009 Zambia International Trade Fair

Subscribe for your free electronic copy of “The Monthly” online at www.zamstats.gov.zm

The Editorial Team would like to thank all Media Institutions and Users of

“The Monthly”

Thank you for supporting us

Secretariat

Efreda Chulu	- Director
John Kalumbi	- Deputy Director
Linda N. Chonya	- Senior Research Officer
Anthony Nkole	- Desktop Publishing Officer
Perry Musenge	- Assistant Desktop Publishing Officer
Etambuyu Lukonga	- Documentalist
Cecilia M. Munjita	- Librarian
Petronella Kaputu	- Press Liaison Officer
Humphrey Zimba	- Dissemination Officer

Editorial Team

Efreda Chulu	- Director
John Kalumbi	- Deputy Director (IRD)
Modesto Banda	- Deputy Director (AG)
William Mayaka	- Deputy Director (SOC)
Peter Mukuka	- Deputy Director (ECON)
Janet N. Zulu	- Senior Gender Analyst
Linda N. Chonya	- Senior Research Officer
Josephine Chewes Banda	- Statistician
Gerson Banda	- Statistician
Palver Sikanyiti	- Statistician
Chisuwa Sandu	- Assistant Field Co-ordinator