



Republic of Zambia

The Monthly

Central Statistical Office

Volume 100

Website: www.zamstats.gov.zm

July, 2011

Foreword

Welcome to the Monthly presentation organised by the Dissemination Branch of the Central Statistical Office (CSO). The CSO embarks on vigorous information delivery strategy to major stakeholders and the media institutions in order to increase utilisation of statistical products and services. The office produces a number of statistical products in the Economic, Social, Agricultural and Environmental areas. The information collected in these areas may be used for various purposes including policy formulation, planning, implementation, monitoring and evaluation of programmes and projects.

This Monthly publication is an attempt to provide highlights of CSO's work and how it can help media institutions and the general public to make use of data and information for sustainable national development and decision-making.

I would like to urge our readers and users of statistical information to send to us any comments that may enhance statistical production and contribute to the improvement of this bulletin.

John Kalumbi
Acting Director of Census and Statistics

28th July, 2011

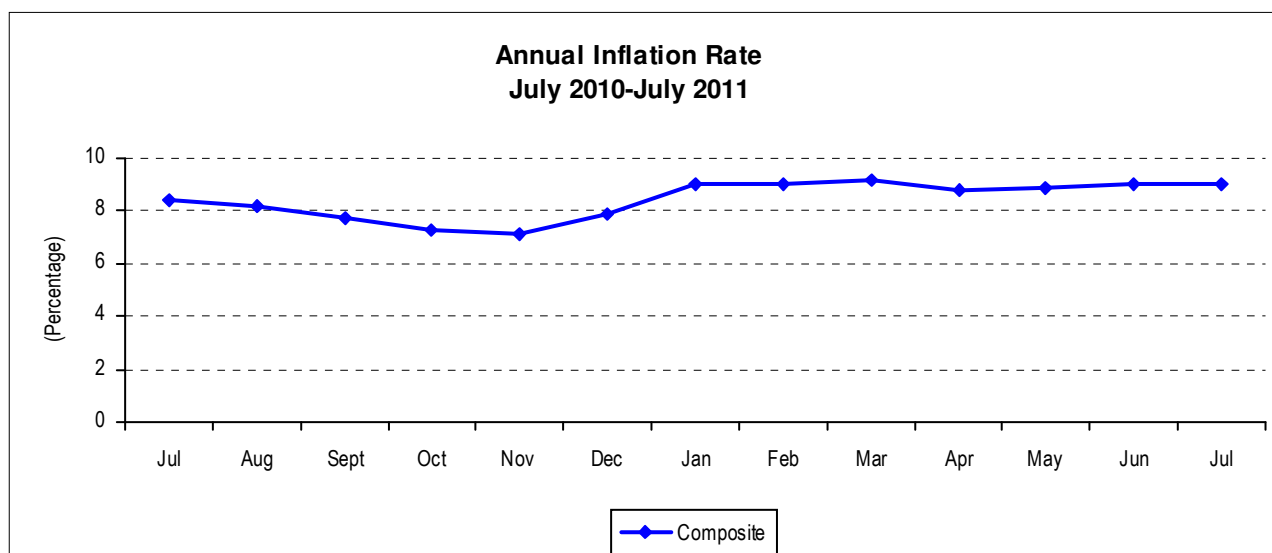
Inside this Issue

- July Inflation remains unchanged at 9.0 percent
- June 2011 records Trade Surplus
- Selected Socio - Economic Indicators

INFLATION

July Inflation remains unchanged at 9.0 percent.

The annual rate of inflation, as measured by the all items Consumer Price Index (CPI), remained unchanged at 9.0 percent in July 2011.



Changes in annual inflation rates for CPI Main Groups

Between June 2011 and July 2011, annual inflation rates increased for Food, beverages and tobacco; Furniture and household goods; and Recreation and education. The annual inflation rates

reduced for Clothing and footwear; Household fuel and lighting; Transport and communication; and Other goods and services.

Annual Inflation Rate: CPI Main Groups

	Total	Food And Beverages	Clothing And Footwear	Rent Fuel & Lighting	Furniture And Household Goods	Medical care	Transport And Comms	Recreation And Education	Other Goods And Services
Jan 08 – Jan 07	9.3	6.9	12.5	13.4	17.1	8.4	7.7	6.8	7.0
Feb 08 – Feb 07	9.5	9.1	11.1	12.5	16.0	8.9	0.3	9.0	8.4
Mar 08 – Mar 07	9.8	9.1	11.2	12.2	16.1	10.0	1.1	10.3	9.4
Apr 08 – Apr 07	10.1	9.8	11.1	12.7	16.3	12.2	-0.2	11.1	9.4
May 08 – May 07	10.9	11.7	10.5	12.0	14.9	12.4	0.5	11.4	9.5
Jun 08 – June 07	12.1	15.6	9.7	11.4	13.4	12.2	-3.5	10.6	10.4
Jul 08 – Jul 07	12.6	14.2	9.3	14.9	14.2	13.9	4.7	11.0	11.3
Aug 08- Aug 07	13.2	16.3	6.3	14.5	13.3	12.9	5.3	11.2	10.7
Sep 08- Sep 07	14.2	16.2	5.6	17.7	14.8	11.8	11.5	11.5	10.4
Oct 08 – Oct 07	15.2	17.6	4.6	14.9	15.1	11.3	19.2	11.6	12.1
Nov 08 – Nov 07	15.3	18.5	2.7	14.5	16.1	10.3	16.4	12.4	12.5
Dec 08 – Dec 07	16.6	20.5	2.5	15.2	18.0	9.9	15.9	12.1	13.2
Jan 09 – Jan 08	16.0	21.3	3.0	8.9	13.8	9.2	18.3	11.7	15.2
Feb 09 – Feb 08	14.0	16.3	3.9	8.6	16.5	9.6	19.4	9.3	15.4
Mar 09 – Mar 08	13.1	13.9	5.9	10.4	16.3	10.1	19.7	7.9	15.2
Apr 09 – Apr 08	14.3	15.9	6.8	10.4	16.1	8.2	22.0	7.1	17.1
May 09 – May 08	14.7	16.1	7.9	10.7	21.2	8.0	16.6	6.0	20.0
Jun 09 – June 08	14.4	14.1	9.6	10.1	22.4	10.0	21.0	6.9	22.6
Jul 09 – Jul 08	14.0	14.9	9.9	7.9	22.1	10.2	13.0	8.9	21.6

Aug 09- Aug 08	14.3	14.6	11.4	11.7	21.7	10.3	10.4	10.1	20.6
Sep 09- Sep 08	13.0	13.9	13.6	9.9	21.4	13.3	1.3	9.7	20.5
Oct 09 – Oct 08	12.3	12.3	15.0	11.7	19.4	14.9	-3.2	12.0	24.7
Nov 09 – Nov 08	11.5	11.1	15.0	11.2	19.1	14.4	-3.1	11.0	23.6
Dec 09 – Dec 08	9.9	8.0	15.8	11.4	17.6	15.9	-3.4	10.6	26.0
Jan 10 – Jan 09	9.6	7.1	15.7	14.7	16.4	15.8	-4.0	10.5	23.0
Feb 10 – Feb 09	9.8	8.2	14.7	13.3	14.3	15.7	-1.1	9.9	21.1
Mar 10 – Mar 09	10.2	9.3	11.4	12.9	14.1	15.0	1.6	9.9	19.7
Apr 10 – Apr 09	9.2	7.3	11.4	14.4	13.0	15.0	1.6	9.8	20.2
May 10 – May 09	9.1	6.5	10.5	12.4	12.3	15.3	9.9	11.2	16.8
Jun 10 – June 09	7.8	3.8	9.9	15.7	10.1	14.4	11.1	10.8	12.8
Jul 10 – Jul 09	8.4	4.1	11.9	17.0	10.8	12.7	13.0	9.0	12.8
Aug 10- Aug 09	8.2	2.9	12.8	17.2	14.6	13.1	12.4	6.5	14.1
Sep 10- Sep 09	7.7	2.8	11.3	15.8	11.5	9.8	15.3	6.6	14.1
Oct 10 – Oct 09	7.3	3.4	9.5	15.6	11.3	8.7	12.2	4.3	10.2
Nov 10 – Nov 09	7.1	2.5	9.9	16.6	11.3	9.2	12.9	4.1	11.0
Dec 10 – Dec 09	7.9	4.4	10.0	16.4	12.9	7.6	11.2	3.5	7.6
Jan 11 – Jan10	9.0	5.2	9.3	20.8	14.0	8.3	14.0	3.2	7.7
Feb 11 – Feb 10	9.0	4.5	9.2	26.0	14.1	7.7	8.7	5.9	8.1
Mar 11 – Mar 10	9.2	3.8	12.3	28.3	12.9	8.3	6.4	10.0	8.6
Apr 11 – Apr 10	8.8	3.3	11.3	24.8	14.0	8.8	7.7	10.8	5.9
May 11 – May 10	8.9	4.2	11.9	26.5	11.6	8.7	4.5	10.8	5.4
Jun 11 – June10	9.0	5.3	10.6	23.6	12.0	7.9	2.9	10.3	6.2
Jul 11 – Jul 10	9.0	5.9	9.1	22.6	12.1	7.9	2.3	10.7	6.0

Source: CSO, Price Statistics

Contributions of different Items to overall inflation

Of the total 9.0 percent annual inflation in July 2011, food products accounted for 2.8 percentage points, while non-food

products in the Consumer Price Index (CPI) accounted for a total of 6.2 percentage points.

Items	Percentage Points Contributions of different items to overall inflation												
	Jul-10	Aug-10	Sept-10	Oct-10	Nov-10	Dec-10	Jan-11	Feb-11	Mar-11	Apr-11	May-11	Jun -11	Jul -11
Food Beverages and Tobacco	2.0	1.4	1.4	1.6	1.2	2.2	2.6	2.2	1.9	1.6	2.0	2.5	2.8
Clothing and Footwear	1.1	1.1	1.0	0.9	0.9	0.9	0.8	0.8	1.1	1.0	1.1	1.0	0.8
Rent and household energy	1.9	1.9	1.8	1.8	1.9	1.8	2.3	2.9	3.2	2.9	3.0	2.8	2.7
Furniture and Household Goods	1.3	1.8	1.4	1.4	1.4	1.6	1.7	1.7	1.5	1.7	1.4	1.5	1.5
Medical Care	0.1	0.1	0.1	0.1	0.1	0.1	0.1	0.1	0.1	0.1	0.1	0.1	0.1
Transport (fuel, airfares, new motor vehicles)	1.0	1.0	1.2	0.9	1.0	0.8	1.0	0.7	0.5	0.6	0.4	0.2	0.2
Recreation and Education	0.6	0.4	0.4	0.3	0.3	0.2	0.2	0.4	0.6	0.7	0.7	0.7	0.7
Other Goods and Services	0.4	0.5	0.4	0.3	0.3	0.3	0.3	0.2	0.3	0.2	0.2	0.2	0.2
All Items	8.4	8.2	7.7	7.3	7.1	7.9	9.0	9.0	9.2	8.8	8.9	9.0	9.0

Source: CSO, Price Statistics

The Annual food and Non-food inflation rate

The annual food inflation rate was recorded at 5.9 percent in July 2011. This is an increase from 5.3 percent in June, 2011. Furthermore, the annual non-food

inflation rate was recorded at 11.8 percent in July 2011. This is a decrease from 12.3 percent in June 2011.

Annual Inflation Rates: Food and Non food

Period	Total	Food	Non-Food
Jan 08 - Jan 07	9.3	6.9	11.7
Feb 08 - Feb 07	9.5	9.1	10.0
Mar 08 - Mar 07	9.8	9.1	10.4
Apr 08- Apr 07	10.1	9.8	10.5
May 08 – May 07	10.9	11.7	10.1
Jun 08 - Jun 07	12.1	15.6	8.8
Jul 08- Jul 07	12.6	14.2	11.2
Aug 08– Aug 07	13.2	16.3	10.4
Sep 08 – Sep 07	14.2	16.2	12.4
Oct 08- Oct 07	15.2	17.6	13.0
Nov 08- Nov 07	15.3	18.5	12.4
Dec 08 – Dec 07	16.6	20.5	12.9
Jan 09 - Jan 08	16.0	21.3	11.1
Feb 08 - Feb 07	14.0	16.3	11.7
Mar 09 - Mar 08	13.1	13.9	12.3
Apr 09– Apr 08	14.3	15.9	12.7
May 09 – May 08	14.7	16.1	13.3
Jun 09 - Jun 08	14.4	14.1	14.7
Jul 09- Jul 08	14.0	14.9	13.1
Aug 09– Aug 08	14.3	14.6	13.9
Sep 09 – Sep 08	13.0	13.9	12.1
Oct 09- Oct 08	12.3	12.3	12.3
Nov 09- Nov 08	11.5	11.1	11.9
Dec 09 – Dec 08	9.9	8.0	11.8
Jan 10 – Jan 09	9.6	7.1	12.0
Feb 10 – Feb 09	9.8	8.2	11.3
Mar 10 - Mar 09	10.2	9.3	11.0
Apr 10– Apr 09	9.2	7.3	11.2
May 10 – May 09	9.1	6.5	11.6
Jun 10 - Jun 09	7.8	3.8	11.8
Jul 10- Jul 09	8.4	4.1	12.6
Aug10– Aug 09	8.2	2.9	13.4
Sep 10 – Sep 09	7.7	2.8	12.5
Oct 10 - Oct 09	7.3	3.4	11.0
Nov10- Nov 09	7.1	2.5	11.5
Dec 10– Dec 09	7.9	4.4	11.3
Jan 11 – Jan 10	9.0	5.2	12.8
Feb 11 – Feb 10	9.0	4.5	13.5
Mar 11 - Mar 10	9.2	3.8	14.5
Apr 11– Apr 10	8.8	3.3	14.0
May 11 – May 10	8.9	4.2	13.3
Jun 11 - Jun 10	9.0	5.3	12.3
Jul 11- Jul10	9.0	5.9	11.8

Source: CSO, Price Statistics

National Average Prices of Selected Products.

A comparison of retail prices between June 2011 and July 2011, shows that the national average price of a 25 kg bag of white breakfast mealie meal reduced by 1.1 percent, from K48,522 to K47,987. The average price of a 25 Kg bag of white roller mealie meal reduced by 1.5 percent, from K34,054 to K33,536.

The national average price of a 20 litre tin of maize grain increased by 1.8 percent, from K16,680 to K16,973. The national

average price of 1kg of tomatoes increased by 5.1 percent, from K4,273 to K4,492. The average price of 1kg of rape (vegetable) increased by 14.3 percent, from K2,510 to K2,870. The national average price of 1kg of dried kapenta (Mpulungu) increased by 6.0 percent, from K52,064 to K55,179. The national average price of 1kg of dried fish (bream) increased by 11.9 percent, from K35,316 to K39,527.

National Average Prices for selected Products and Months

Product Description	2,011							Percentage Change
	January	February	March	April	May	June	July	Jul -11/Jun - 11
White breakfast mealie meal 25Kg	52,605	52,305	51,867	51,294	49,661	48,522	47,987	-1.1
White Roller mealie meal 25Kg	37,408	37,778	38,048	36,417	35,391	34,054	33,536	-1.5
White Maize 20 litre tin	21,601	21,746	21,381	21,374	18,464	16,680	16,973	1.8
Rice Local 1 Kg	7,828	7,905	7,772	7,728	7,914	7,966	7,928	-0.5
Rice Imported 1 Kg	27,097	26,719	24,969	25,112	25,613	29,487	28,896	-2.0
Millet 5 litre tin	11,679	13,287	13,029	13,241	12,841	12,995	12,436	-4.3
Sorghum 5 litre tin	13,226	14,007	13,428	13,496	12,855	13,243	13,177	-0.5
Fillet Steak 1 Kg	34,644	35,702	35,397	35,847	35,503	35,261	35,061	-0.6
Rump Steak 1 Kg	32,042	31,725	31,841	32,624	32,777	31,940	31,475	-1.5
Mince Meat 1 Kg	28,801	28,621	28,143	28,174	26,843	26,792	26,638	-0.6
Mixed Cut 1 Kg	22,645	22,893	23,181	23,204	22,467	22,264	22,099	-0.7
Ox-liver 1 Kg	23,365	22,950	22,620	23,598	24,080	23,425	23,349	-0.3
Pork chops 1 Kg	24,465	24,630	24,842	25,888	26,739	25,399	24,280	-4.4
Dressed chicken 1 Kg	17,043	17,089	17,660	17,902	17,428	16,919	16,788	-0.8
Fresh Kapenta 400 gms	6,296	6,418	6,398	6,708	6,686	6,632	6,507	-1.9
Dried Kapenta Mpulungu 1 Kg	59,597	57,869	54,071	51,741	54,836	52,064	55,179	6.0
Dried Kapenta Siavonga 1 Kg	60,844	60,128	59,341	57,686	59,799	55,629	58,505	5.2
Dried Kapenta Chisense 1 Kg	37,396	34,137	36,444	34,136	36,005	32,302	34,021	5.3
Dried bream 1 Kg	39,806	35,673	36,661	36,839	35,354	35,316	39,527	11.9
Fresh milk (Pasteurised) Local 500 ml	3,599	3,537	3,554	3,572	3,563	3,573	3,661	2.5
Cooking oil Local Any 2.5 ltr	29,571	30,729	31,623	32,190	32,669	32,860	33,010	0.5
Cabbage 1kg	2,030	1,793	1,634	1,642	1,656	1,523	1,812	19.0
Carrots 1kg	5,575	5,616	5,318	5,271	5,176	5,277	5,454	3.4
Tomatoes 1kg	3,984	4,103	3,396	3,001	3,272	4,273	4,492	5.1
Peas 1kg	14,084	14,084	4,665	6,055	4,607	7,367	10,051	36.4
Rape 1kg	3,088	2,896	2,678	2,640	2,647	2,510	2,870	14.3
Cucumber 1kg	3,970	2,612	2,878	2,976	3,158	3,350	3,040	-9.3
Fresh okra 1kg	5,952	5,445	5,022	4,422	5,004	5,514	6,352	15.2
Dried beans 1kg	10,716	11,302	10,698	10,813	10,561	9,976	10,256	2.8
Shelled groundnut 1kg	8,586	9,019	8,929	9,300	9,153	8,335	8,384	0.6
Sweet potatoes 1kg	2,073	2,151	1,662	1,853	1,616	1,577	1,708	8.3
Raw cassava tubers Unsoaked 1kg	1,797	1,713	2,034	1,969	1,946	1,953	1,991	1.9
Air fare Lusaka/London British Airways 1 Way	5,390,000	5,500,000	5,507,600	5,467,200	5,932,800	5,932,800	7,056,000	18.9
Air Fare Lusaka/Ndola Proflight Zambia 1 way	833,000	833,000	833,000	816,000	833,000	833,000	833,000	0.0
Train Fare Kapiiri/Dar Tazara Railways 1 way	145,200	145,200	145,200	145,200	145,200	145,200	196,000	35.0
Bed & continental Breakfast 3 to 5 star tel	598,474	705,824	692,945	687,012	685,653	691,719	666,815	-3.6
Bed & Continental Breakfast 2 star Down to motel	135,952	122,284	131,443	139,922	138,869	135,147	135,342	0.1

Source: CSO, Price Statistics

INTERNATIONAL MERCHANDIZE TRADE

June 2011 records Trade Surplus

Zambia recorded a trade surplus valued at K 527.3 billion in June 2011, representing a nominal decrease of about 33.7 percent from K795.6 billion recorded in May 2011. This means that the country exported more in June 2011 than it imported, in the same month, in nominal terms.

The country has had monthly trade surpluses since January 2011 with the highest valued at K1, 484.3 billion recorded in January 2011 and the lowest in June 2011, valued at K527.3 billion.

Total Exports (fob) and Imports (cif), January to June* 2011 (K' Millions)

Months	Imports(cif)	Domestic Exports(fob)	Re-Exports(fob)	Total Exports(fob)	Trade Balance
January®	2,091,025	3,440,002	135,310	3,575,312	1,484,287
February®	2,372,536	2,937,929	78,112	3,016,042	643,506
March®	2,809,345	3,413,243	260,268	3,673,511	864,166
Quarter 1	7,272,906	9,791,175	473,691	10,264,866	2,991,959
April®	2,438,607	3,262,399	281,589	3,543,988	1,105,381
May®	2,615,136	3,255,223	155,462	3,410,684	795,548
June*	2,959,617	3,336,151	150,767	3,486,918	527,301
Quarter 2	8,013,360	9,853,772	587,818	10,441,590	2,428,230
Total:	15,286,267	19,644,947	1,061,510	20,706,456	5,420,189

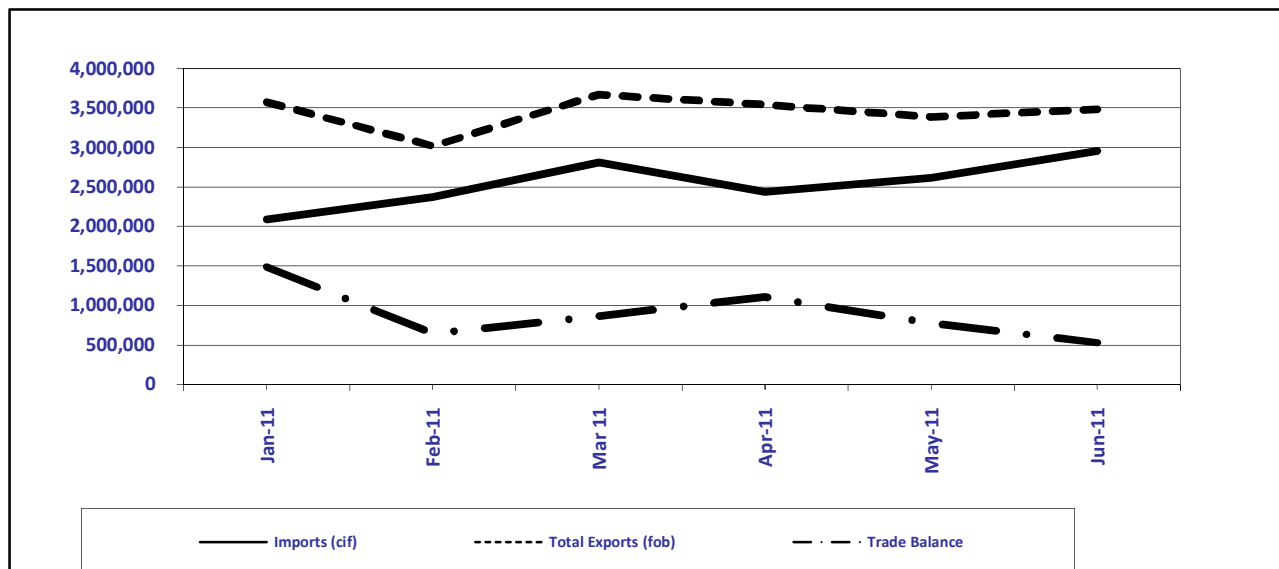
Source: CSO, International Trade Statistics, 2011

These trade data are compiled based on the General Trade System

Note: (*) Provisional

(®) Revised

Total Exports (fob), Imports (cif) and Trade Balance, January to June* 2011 (K' Millions)



Source: CSO, International Trade Statistics, 2011

These trade data are compiled based on the General Trade System

Note: January 2011 to May 2011 figures have been revised, while June 2011 figures are provisional

Exports by Major Product Categories June and May 2011

Zambia's major export products in June 2011 were from the Intermediate goods category (mainly comprising copper cathodes and sections of refined copper) accounting for about 82.5 percent. This is a slight decrease from 86.8 percent recorded in May 2011. Other exports were from the Consumer goods, Raw materials and Capital goods

categories; which collectively accounted for about 17.5 percent of total exports in June 2011. This implies that between June and May 2011, the country has been a net exporter of Intermediate goods, mainly metals and their articles, accounting for an average of 84.7 percent of the total exports for the two months.

Exports by Major Product Categories June and May 2011

Description	June 2011*		May 2011®	
	Value	% Share	Value	% Share
Consumer Goods	288,218	8.3	220,397	6.5
Raw Materials	229,543	6.6	131,274	3.8
Intermediate Goods	2,877,876	82.5	2,962,161	86.8
Capital Goods	91,280	2.6	96,852	2.8
Total:	3,486,918	100.0	3,410,684	100.0

Source: CSO, International Trade Statistics, 2011

Note: (*) Provisional

(®) Revised

Zambia's Metal Exports and Non-Traditional Exports (NTEs) June and May 2011

There has been a 2.2 percent marginal increase in the total value of exports between May and June 2011, from K3,410.7 billion to K3,486.9 billion. The

contribution of metals and NTEs to total export earnings in May and June averaged 78.4 and 21.6 percent, respectively.

Zambia's Metal Exports and Non-Traditional Exports (NTEs) June and May 2011

GROUP	June 2011*		May 2011®	
	Value (K'Million)	% Share	Value (K'Million)	% Share
Traditional Exports (mainly Metals)	2,663,092	76.4	2,740,613	80.4
Non-Traditional Exports	823,826	23.6	670,071	19.6
Total Exports	3,486,918	100.0	3,410,684	100.0

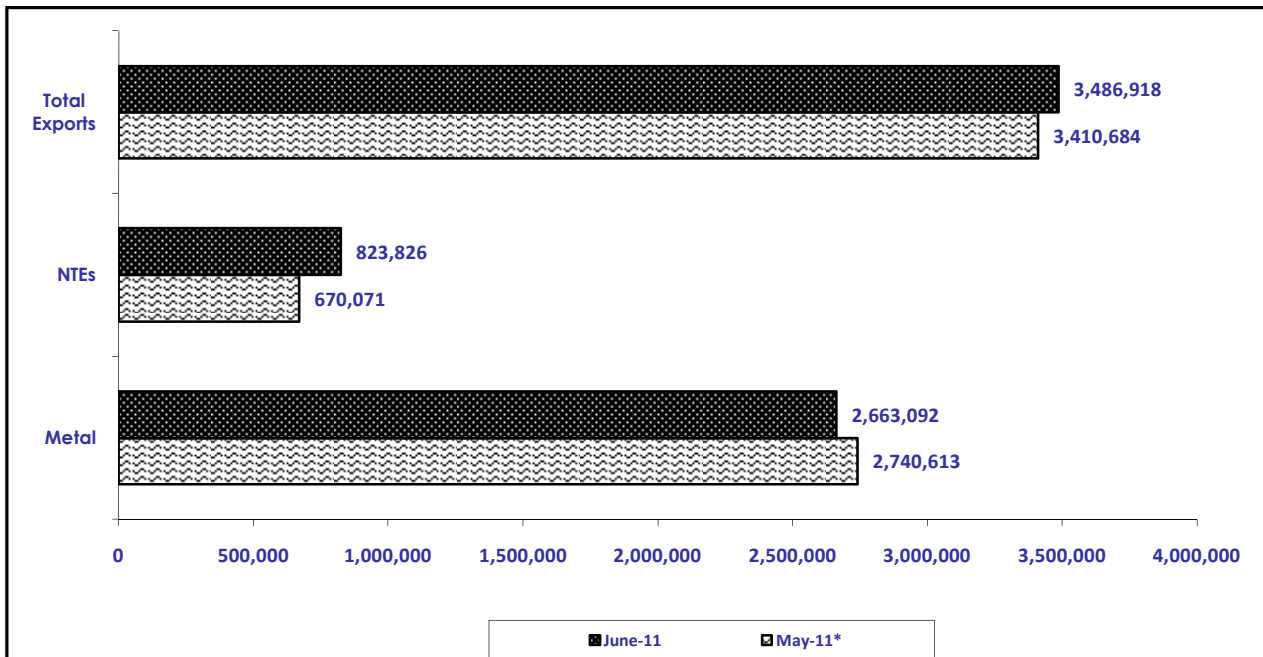
Source: CSO, International Trade Statistics, 2011

Note: (*) Provisional

(®) Revised

Zambia's Metals Exports and Non-Traditional Exports (NTEs) June and May 2011,

(K' Million)



Source: CSO, International Trade Statistics, 2011

Note that the May figures are revised while the June figures are provisional

Zambia's Major Export Destinations by Commodity in June 2011

Zambia's major export destination in June 2011 was Switzerland, which accounted for 52.4 percent. The major export products to Switzerland were; Cathodes & Sections of cathodes of refined Copper accounting for about 88.1percent.

China was the second major export destination, accounting for 15.0 percent. The chief export products to China were Cathodes & Sections of cathodes of refined copper (49.0 percent).

South Africa was the third major export destination accounting for 10.5 percent. The main export products to South Africa were Cathodes and Sections of cathodes of refined copper, which contributed 41.0 percent.

The Democratic Republic of Congo was the fourth major export destination, accounting for 4.4 percent. The main export products to the Democratic Republic of Congo were Portland cement (excluding White) accounting for 11.8 percent.

Zimbabwe was the fifth major export destination accounting for 3.4 percent. The major export products to Zimbabwe were Tobacco not stemmed/stripped (21.7 percent).

These five countries collectively accounted for 85.7 percent of Zambia's total export earnings in June 2011.

Zambia's Five Major Export Destinations by Product for June 2011*

Country / Hs-Code	Description	June 2011*	
		Value (K'Million)	% Share
SWITZERLAND		1,827,276	100.0
74031100	Cathodes and sections of cathodes of refined copper	1,609,070	88.1
74091900	Plates, sheets and strip, of refined copper, uncoi	140,717	7.7
74031910	Copper blister	28,842	1.6
52010000	Cotton, not carded or combed	14,425	0.8
14042000	Cotton linters	11,606	0.6
81059000	Other: articles of cobalt, nes	11,281	0.6
26030000	Copper ores and concentrates	6,736	0.4
26050000	Cobalt ores and concentrates	3,190	0.2
74081100	Wire of refined copper, maximum cross-sectional dimension >6mm	1,043	0.1
74091100	Plates, sheets and strip, of refined copper, in co	309	0.0
Other Products		58	0.0
% of Total June Exports		52.4	
CHINA		524,706	100.0
74031100	Cathodes and sections of cathodes of refined copper	256,865	49.0
74031910	Copper blister	126,566	24.1
74091900	Plates, sheets and strip, of refined copper, uncoi	59,571	11.4
74032900	Copper (excl. Master) alloys, nes, unwrought	41,446	7.9
26040000	Nickel ores and concentrates	17,449	3.3
52030000	Cotton, carded or combed	15,599	3.0
26203000	Ash and residues containing mainly copper	3,200	0.6
44079900	Wood, nes sawn or chipped lengthwise, sliced or pe	1,425	0.3
26030000	Copper ores and concentrates	814	0.2
26020000	Manganese ores/concentrates(inc.ferruginous), with	533	0.1
Other Products		1,237	0.2
% of Total June Exports		15.0	
SOUTH AFRICA		367,750	100.0
74031100	Cathodes and sections of cathodes of refined copper	150,778	41.0
74081100	Wire of refined copper, maximum cross-sectional dimension >6mm	47,383	12.9
81059000	Other: articles of cobalt, nes	43,638	11.9
71081300	Semi-manufactured gold (incl. Gold plated with pla	37,649	10.2
85444900	Electric conductors, nes, for a voltage <=80 v, no	10,925	3.0
28220010	Cobalt oxides and hydroxides; commercial cobalt ox	8,522	2.3
17011100	Raw cane sugar, in solid form	8,182	2.2
49070020	New stamps; stamp-impressed paper; cheque forms; b	5,645	1.5
52010000	Cotton, not carded or combed	5,277	1.4
74031910	Copper blister	4,984	1.4
Other Products		44,767	12.2
% of Total June Exports		10.5	
CONGO DR		153,431	100.0
25232900	Portland cement (excl. White)	18,111	11.8
28070010	Sulphuric acid; oleum in bulk	14,653	9.5
17011100	Raw cane sugar, in solid form	13,883	9.0
28020010	Sulphur, sublimed or precipitated; colloidal sulph	13,447	8.8
11010000	Wheat or meslin flour	11,732	7.6
15100000	Other oils and their fractions, obtained solely fr	10,002	6.5
38249000	Chemical products and residual products of chemical	7,802	5.1
33029010	Other mixtures with basis of odoriferous subst.inc	6,811	4.4
28321010	Sodium sulphites in bulk	5,965	3.9
36020090	Other prepared explosives, (excl. Propellent powde	4,952	3.2
Other Products		46,074	30.0
% of Total June Exports		4.4	
ZIMBABWE		118,612	100.0
24011000	Tobacco, not stemmed/stripped	25,717	21.7
10059000	Maize (excl. Seed)	13,018	11.0
17049000	Sugar confectionery (incl. White chocolate), not c	3,741	3.2
22029000	Other non-alcoholic beverages, nes	3,105	2.6
19053100	Sweet biscuits.	2,332	2.0
10051000	Maize seed	1,713	1.4
34012090	Soap in other forms, nes - other	1,687	1.4
25232900	Portland cement (excl. White)	1,676	1.4
10030090	Other barley	1,484	1.3
23099020	Animal feed supplements being premixes	1,461	1.2
Other Products		62,677	52.8
% of Total June Exports		3.4	
Other Destination		495,143	14.2
Total Value of June Exports		3,486,918	

Source: CSO, International Trade Statistics, 2011

Note: (*) Provisional

Export Market Shares by Regional Groupings, June and May 2011

The Southern African Development Community (SADC) regional grouping was the largest market for Zambia's total exports, accounting for 22.8 percent in June 2011. Within SADC, South Africa was the dominant market in June and May 2011 with 46.2 and 44.1 percent, respectively. Congo (DR) was second in both June and May 2011 with 19.3 and 19.2 percent, respectively. Other notable markets were Namibia, Zimbabwe and Mauritius.

Asia was the second largest market for Zambia's total exports, accounting for 18.3 percent in June 2011. Within Asia, China was the dominant market in both June and May 2011 with 82.2 and 86.0 percent, respectively. Singapore was the second dominant market in June 2011 with 11.5 percent. Other notable markets were India and United Arab Emirates.

The Common Market for Eastern and Southern Africa (COMESA) grouping of

countries was the third largest market for Zambia's total exports accounting for 12.6 percent in June 2011. Within COMESA, Congo (DR) was the dominant market in both months with 34.9 percent in June 2011 and 43.8 percent in May 2011. Zimbabwe was the second dominant market in both months with 27.0 percent in June and 21.4 in May 2011. Other notable markets were Mauritius, Malawi and Kenya.

The European Union (EU) was the fourth largest market for Zambia's total exports accounting for 5.1 percent in June 2011. Within the EU, the United Kingdom was the dominant market with 51.4 and 82.0 percent in June and May 2011, respectively. Belgium was the second dominant market with 36.5 percent in June 2011. Other notable markets were Netherlands and Germany.

Export Market Shares by Regional Groupings, June and May 2011 (K' Millions)

GROUPING	June 2011*		GROUPING	May 2011®	
	Value (K'Million)	% Share		Value (K'Million)	% Share
SADC	795,954	100.0	SADC	761,449	100.0
South Africa	367,750	46.2	South Africa	336,126	44.1
Congo DR	153,431	19.3	Congo DR	145,905	19.2
Zimbabwe	118,612	14.9	Namibia	71,221	9.4
Malawi	64,352	8.1	Zimbabwe	71,221	9.4
Mauritius	60,031	7.5	Mauritius	54,231	7.1
Other SADC	31,778	4.0	Other SADC	82,745	10.9
% of Total June Exports	22.8		% of Total May Exports	22.3	
ASIA	638,566	100.0	ASIA	576,520	100.0
China	524,706	82.2	China	495,602	86.0
Singapore	73,330	11.5	Saudi Arabia	48,279	8.4
United Arab Emirates	29,272	4.6	United Arab Emirates	23,110	4.0
India	9,009	1.4	India	8,082	1.4
Hong Kong	2,000	0.3	Hong Kong	1,194	0.2
Other ASIA	249	0.0	Other ASIA	252	0.0
% of Total June Exports	18.3		% of Total May Exports	16.9	
COMESA	440,064	100.0	COMESA	333,287	100.0
Congo DR	153,431	34.9	Congo DR	145,905	43.8
Zimbabwe	118,612	27.0	Zimbabwe	71,221	21.4
Malawi	64,352	14.6	Mauritius	54,231	16.3
Mauritius	60,031	13.6	Malawi	31,124	9.3
Kenya	23,758	5.4	Kenya	19,377	5.8
Other COMESA	19,879	4.5	Other COMESA	11,429	3.4
% of Total June Exports	12.6		% of Total May Exports	9.8	
EUROPEAN UNION	176,457	100.0	EUROPEAN UNION	126,208	100.0
United Kingdom	90,649	51.4	United Kingdom	103,513	82.0
Belgium	64,381	36.5	Luxembourg	11,520	9.1
Slovenia	10,497	5.9	Germany	4,144	3.3
Netherlands	4,217	2.4	Netherlands	3,958	3.1
Germany	3,244	1.8	Belgium	2,494	2.0
Other EU	3,468	2.0	Other EU	580	0.5
% of Total June Exports	5.1		% of Total May Exports	3.7	
Total Value of June Exports	3,486,918		Total Value of May Exports	3,410,684	

Source: CSO, International Trade Statistics, 2011

Note: (*) Provisional

(R) Revised figures

Imports by Major Product Categories, June and May 2011

Zambia's major import products by category in June 2011 were from the Capital Goods category, accounting for 31.8 percent. The Raw Materials category was second with 28.7 percent, followed by Intermediate Goods with 26.9 percent. Consumer goods ranked fourth

with 12.6 percent. This means that between June and May 2011, the country has been a net importer of Capital goods, accounting for an average of 31.4 percent of total imports in both months.

Imports (cif) by Major Product Categories June and May 2011, (K' Millions)

Description	June 2011*		May 2011®	
	Value	% Share	Value	% Share
Consumer Goods	371,840	12.6	347,783	13.3
Raw Materials	849,523	28.7	736,001	28.1
Intermediate Goods	797,199	26.9	720,326	27.5
Capital Goods	941,055	31.8	811,027	31.0
Total:	2,959,617	100.0	2,615,136	100.0

Source: CSO, International Trade Statistics, 2011

Note: (*) Provisional
(R) Revised figures

Zambia's Major Import Sources by Commodity, June 2011

The major source of Zambia's imports in June 2011 was South Africa, accounting for 34.2 percent. The major import products from South Africa were Mineral or chemical fertilizers with nitrogen, phosphorous and potassium, contributing 6.8 percent to the share of imports.

The second main source of Zambia's imports in June 2011 was Congo (DR)

accounting for 20.4 percent of the total value of imports. The major import products from Congo (DR) were Copper ores and concentrates, accounting for 74.1 percent.

Other notable sources of Zambia's imports were China, the United Kingdom and India.

Zambia's Major Import Sources by Products, June 2011* (K' Millions)

Country / Hs-Code		Description	June 2011*	
			Value (K'Million)	% Share
SOUTH AFRICA			1,012,704	100.0
31052000	Mineral or chemical fertilizers with nitrogen, phosphorous,potassium,		68,631	6.8
87041000	Dumpers for off-highway use		26,432	2.6
84314900	Parts of machinery of 84.26, 84.29 and 84.30, nes		23,069	2.3
31023000	Ammonium nitrate		17,381	1.7
28020010	Sulphur, sublimed or precipitated; colloidal sulph		14,831	1.5
27101950	Cutting oil,grease cutting oils,cleaning oils etc.		14,110	1.4
72104900	Flatrolled iron/steel,wid.>=600mm,zinc plated/coat		13,731	1.4
87042110	Diesel dual purpose vehicles for both persons & go		13,427	1.3
84138100	Pumps for liquids, nes		12,698	1.3
73089090	Structures and parts of structures, nes, of iron o		11,947	1.2
Other Products			796,447	78.6
% of Total June Imports			34.2	
CONGO DR			603,279	100.0
26030000	Copper ores and concentrates		446,865	74.1
26050000	Cobalt ores and concentrates		78,401	13.0
28220010	Cobalt oxides and hydroxides; commercial cobalt ox		74,080	12.3
28369920	Other carbonates; peroxocarbonates - not in bulk		1,493	0.2
84294000	Self-propelled tamping machines and road-rollers		1,374	0.2
87042110	Diesel dual purpose vehicles for both persons & go		428	0.1
87021090	Motor vehicles for transport of persons sitting c		199	0.0
87033310	Vehicles with diesel... Engine of cylinder capacit		101	0.0
84388000	Machinery for the preparation or manufacture of food or drink. nes		58	0.0

Country / Hs-Code	Description	June 2011*	
		Value (K'Million)	% Share
87112000	Motorcycles with reciprocating engine of capacity	54	0.0
Other Products		227	0.0
% of Total June Imports		20.4	
CHINA		363,038	100.0
84742000	Crushing or grinding machines for earth, stone, ores, etc	107,858	29.7
85176900	Other	49,711	13.7
85447000	Optical fibre cables made up of individually sheat	13,206	3.6
85372000	Boards...equipped with two/more apparatus of 85.35	10,688	2.9
87051000	Crane lorries	10,165	2.8
85171200	Telephones for cellular networks or for other wireless networks	9,432	2.6
73029000	Railway track construction material of iron or steel, etc, nes	9,076	2.5
73089090	Structures and parts of structures, nes, of iron o	7,130	2.0
39201090	Other-plates..., of polymers of ethylene, not rein	6,234	1.7
73063000	Tubes and pipes, welded, circular, of iron or non-	5,920	1.6
Other Products		133,619	36.8
% of Total June Imports		12.3	
UNITED KINGDOM		116,615	100.0
84293000	Self-propelled scrapers	28,487	24.4
84552200	Cold metal-rolling mills	23,972	20.6
30039000	Other medicaments with >=2 constituents, not for r	12,059	10.3
84295100	Self-propelled front-end shovel loaders	7,669	6.6
87012000	Road tractors for semi-trailers	6,658	5.7
31022100	Ammonium sulphate	3,872	3.3
87032390	Vehicles with engine capacity exceeding 1500cc but	2,336	2.0
87042300	Goods vehicles, with diesel or semi-diesel engines	2,129	1.8
31052000	Mineral or chemical fertilizers with nitrogen, pho	1,824	1.6
49019900	Printed books, brochures, leaflets and similar pri	1,636	1.4
Other Products		25,972	22.3
% of Total June Imports		3.9	
INDIA		110,813	100.0
73082000	Towers and lattice masts of iron or steel	15,018	13.6
73089090	Structures and parts of structures, nes, of iron o	12,208	11.0
30065000	First-aid boxes and kits	6,933	6.3
30049000	Other medicaments of mixed or unmixed products, fo	5,943	5.4
90301000	Instruments and apparatus for measuring or detecti	3,577	3.2
74050000	Master alloys of copper	2,811	2.5
87042300	Goods vehicles, with diesel or semi-diesel engines	2,512	2.3
87052000	Mobile drilling derricks	2,463	2.2
39069020	Other primary forms of acrylic polymers, not pigmented, nes	2,374	2.1
49070010	New stamps; stamp-impressed paper; cheque forms; b	2,193	2.0
Other Products		54,781	49.4
% of Total June Imports		3.7	
Other Destination		753,167	25.4
Total Value of June Imports		2,959,617	

Source: CSO, International Trade Statistics, 2011

Note: (*) Provisional

Import Market Shares by Regional Groupings, June and May 2011

The Southern African Development Community (SADC) regional grouping was the largest source of Zambia's imports accounting for 57.7 percent in June 2011. Within SADC, South Africa was the major source of Zambia's imports with 59.3 percent in June 2011 and 54.4 percent in May 2011. Congo (DR) was the second major source of Zambia's imports with 35.3 and 36.4 percent in June and May 2011, respectively. Other notable markets were Botswana, Zimbabwe and Tanzania.

Asia was the second largest source of Zambia's imports accounting for 27.0 percent in June 2011. Within Asia, China was the dominant source of Zambia's imports in both June and May 2011 with 45.4 and 35.1 percent, respectively. Other notable markets were the United Arab Emirates, India and Kuwait. The Common Market for Eastern and Southern Africa (COMESA) grouping of countries was the third largest source of Zambia's imports accounting for 23.3 percent in June 2011. Within COMESA, Congo (DR) was the main source of

Zambia's imports in both June and May 2011 with 87.6 and 87.4 percent, respectively. Other notable markets were Zimbabwe, Kenya, Egypt and Malawi.

The European Union (EU) was the fourth largest source of Zambia's imports accounting for 11.1 percent in June 2011. Within the EU, the United Kingdom was

the major source of Zambia's imports accounting for 35.6 and 28.4 percent in June and May 2011, respectively. Sweden was the second largest source of Zambia's imports in both months with 18.2 percent in June 2011 and 17.2 percent in May 2011. Other notable markets were Finland, Ireland and Germany.

Import Market shares by Major Regional Groupings, June and May 2011, K' Millions

GROUPING	June 2011*		GROUPING	May 2011®	
	Value (K'Million)	% Share		Value (K'Million)	% Share
SADC	1,708,096	100.0	SADC	1,585,753	100.0
South Africa	1,012,704	59.3	South Africa	862,389	54.4
Congo DR	603,279	35.3	Congo DR	577,489	36.4
Zimbabwe	30,391	1.8	Botswana	56,267	3.5
Tanzania, United	22,094	1.3	Zimbabwe	40,932	2.6
Botswana	12,108	0.7	Tanzania, United	24,369	1.5
Other SADC	27,520	1.6	Other SADC	24,308	1.5
% of Total June Imports	57.7		% of Total May Imports	60.6	
ASIA	800,090	100.0	ASIA	633,138	100.0
China	363,038	45.4	China	222,482	35.1
India	110,813	13.9	United Arab Emirates	120,864	19.1
United Arab Emirates	105,459	13.2	India	111,187	17.6
Kuwait	85,433	10.7	Kuwait	58,173	9.2
Singapore	45,655	5.7	Japan	42,122	6.7
Other ASIA	89,691	11.2	Other ASIA	78,310	12.4
% of Total June Imports	27.0		% of Total May Imports	24.2	
COMESA	688,655	100.0	COMESA	660,552	100.0
Congo DR	603,279	87.6	Congo DR	577,489	87.4
Zimbabwe	30,391	4.4	Zimbabwe	40,932	6.2
Kenya	29,597	4.3	Kenya	25,344	3.8
Egypt	11,499	1.7	Egypt	9,438	1.4
Malawi	8,179	1.2	Malawi	3,291	0.5
Other COMESA	5,709	0.8	Other COMESA	4,058	0.6
% of Total June Imports	23.3		% of Total May Imports	25.3	
EUROPEAN UNION	327,567	100.0	EUROPEAN UNION	264,145	100.0
United Kingdom	116,615	35.6	United Kingdom	74,974	28.4
Sweden	59,666	18.2	Sweden	45,384	17.2
Germany	31,893	9.7	Finland	42,353	16.0
Finland	30,365	9.3	Ireland	21,638	8.2
Belgium	25,125	7.7	Germany	18,351	6.9
Other EU	63,904	19.5	Other EU	61,444	23.3
% of Total June Imports	11.1		% of Total May Imports	10.1	
Total Value of June Imports	2,959,617		Total Value of May Imports	2,615,136	

Source: CSO, International Trade Statistics, 2011

Note: (*) Provisional

(R) Revised figures

SELECTED SOCIO-ECONOMIC INDICATORS

PROJECTED MID-YEAR POPULATION 2000-2010

	2000	2001	2002	2003	2004	2005	2006	2007	2008	2009	2010*
<i>Total Population</i>	9,885,591	10,089,492	10,409,441	10,744,380	11,089,691	11,441,461	11,798,678	12,160,516	12,525,791	12,896,830	13,046,508
<i>Population Growth Rate</i>	2.5	3.1	3.1	3.1	3.1	3.1	3	3	2.9	2.9	2.8
<i>Life Expectancy at Birth</i>	50	51.8	51.9	52.4	52.4	52.6	51.9	51.4	51.3	51.2	51.3
POPULATION BY PROVINCE											
<i>Central</i>	1,012,257	1,032,574	1,066,992	1,103,387	1,141,256	1,180,124	1,219,980	1,260,491	1,301,776	1,343,835	1,267,803
<i>Copperbelt</i>	1,581,221	1,611,569	1,662,155	1,714,225	1,767,165	1,820,443	1,874,081	1,927,576	1,980,824	2034012	1,958,623
<i>Eastern</i>	1,306,173	1,348,070	1,391,690	1,436,120	1,482,290	1,530,118	1,579,960	1,631,890	1,684,910	1,740,180	1,707,731
<i>Luapula</i>	775,353	791,067	817,326	845,076	873,969	903,746	934,317	965,605	997,579	1,030,572	958,976
<i>Lusaka</i>	1,391,329	1,413,010	1,453,690	1,495,730	1,538,000	1,579,769	1,620,730	1,660,070	1,697,730	1,733,830	2,198,996
<i>Northern</i>	1,258,696	1,277,250	1,315,650	1,357,540	1,401,340	1,445,730	1,490,330	1,534,170	1,577,310	1,619,980	1,759,600
<i>North-western</i>	583,350	596,010	616,496	638,004	660,322	683,367	707,074	731,351	756,261	781,800	706,462
<i>Southern</i>	1,212,124	1,235,134	1,275,470	1,318,161	1,362,382	1,407,433	1,453,324	1,499,462	1,545,880	1,592,864	1,606,793
<i>Western</i>	765,088	774,929	795,247	816,983	839,757	863,294	887,540	912,226	937,419	963,107	881,524

Source: CSO, Population Projections Report

Note: 2000 figures are from the 2000 Census of Population and Housing while the 2001 to 2009 figures are Population Projections from the Projections Report. The 2010 figures are from 2010 Census of Population and Housing Preliminary Report.

GROSS DOMESTIC PRODUCT (GDP), GROWTH RATES 2006-2010

KIND OF ECONOMIC ACTIVITY	2006	2007	2008	2009	2010
PRIMARY SECTOR	4.1	1.7	2.5	12.4	10.2
Agriculture, Forestry and Fishing	2.2	0.4	2.6	7.2	6.6
Mining and Quarrying	7.3	3.6	2.5	20.3	15.2
SECONDARY SECTOR	9.8	10.0	4.7	6.2	6.5
Manufacturing	5.7	3.0	1.8	2.2	4.2
Electricity, Gas and Water	10.5	1.0	(1.2)	6.8	7.4
Construction	14.4	20.0	8.7	9.5	8.1
TERTIARY SECTOR	6.7	7.1	7.2	3.9	6.6
Wholesale and Retail Trade	2.0	2.4	2.7	2.3	4.3
Restaurants, Bars and Hotels	16.1	9.6	5.0	(13.4)	9.6
Transport, Storage and Communications	22.1	19.2	15.8	7.6	14.9
Financial Institutions and Insurance	4.0	4.1	8.7	5.2	6.0
Real Estate and Business services	3.2	3.1	3.0	2.8	3.0
Community, Social and Personal Services	9.0	12.5	11.7	8.6	5.3
Less: FISIM	2.5	2.5	2.5	3.3	2.3
TOTAL GROSS VALUE ADDED	7.0	6.7	5.7	6.4	7.6
Taxes less subsidies on Products	(3.1)	(0.3)	5.7	6.4	7.6
TOTAL G.D.P. AT MARKET PRICES	6.2	6.2	5.7	6.4	7.6

Source: CSO, National Accounts Statistics

PERCENT CHANGE IN THE QUARTERLY INDEX OF INDUSTRIAL PRODUCTION – ZAMBIA 2009 -2010															
PERIOD	TOTAL INDEX	MINING				MANUFACTURING									TOTAL ELECTRICITY
		TOTAL MINING	Coal	Non-ferrous Ore	Stone Quarrying	TOTAL MANUFACTURING	Food, Beverages & Tobacco	Textile, Clothing & Leather	Wood & Wood Products	Paper & Paper Products	Chemicals, Rubbers & Plastics	Non-metallic Mineral Products	Basic Metal Industries	Fabricated Metal Products	
2009 Q1	6.3	9.5	(99.9)	10.4	8.1	(1.7)	3.8	(17.0)	6.9	4.7	2.1	9.0	2.3	(25.1)	17.7
2009 Q2	7.5	12.7	82991	16.2	5.5	1.3	4.8	(21.7)	6.2	7.3	0.6	9.1	(1.9)	(14.4)	7.0
2009 Q3	4.3	6.6	441336	6.2	6.6	0.7	3.8	(29.8)	1.7	9.4	(9.6)	15.3	(9.2)	(7.8)	9.1
2009 Q4	6.3	8.8	0.0	5.7	14.6	5.3	7.3	(17.5)	(6.6)	2.1	4.1	11.4	(11.4)	3.6	0.6
2009	6.1	9.4	1648.9	9.7	8.5	1.6	5.0	(19.9)	2.6	5.6	(0.6)	11.3	(4.8)	(9.8)	8.4
2010 Q1	6.6	7.8	(100.0)	8.5	6.6	5.0	6.6	(42.2)	13.1	21.2	(0.2)	10.3	(2.1)	14.1	5.6
2010 Q2	10.0	10.6	(100.0)	14.2	5.3	9.1	9.2	(21.9)	13.4	29.8	(0.3)	14.0	(0.2)	14.2	10.8
2010 Q3	11.4	6.1	(100.0)	25.7	4.2	5.7	4.0	(77.2)	9.7	24.4	1.8	11.6	1.8	16.2	7.2
2010 Q4	10.7	14.2	(100.0)	19.4	5.2	6.8	9.4	(91.0)	17.4	15.8	12.4	15.4	(9.3)	8.1	12.1
2010	9.7	12.3	(100.0)	16.5	5.3	6.7	7.4	(56.8)	13.4	22.7	2.7	13.0	(2.0)	12.8	8.9

Source: CSO, Industrial Statistics

Percent Distribution of Formal Sector Employees by Sector, 2009

Institutional Sector	1st Quarter 2009		2nd Quarter 2009		3rd Quarter 2009		4th Quarter 2009		Percent Change		
	Number	Percent	Number	Percent	Number	Percent	Number	Percent	1st Qtr to 2nd Qtr	2nd Qtr to 3rd Qtr	3rd Qtr to 4th Qtr
Central Government	138,092	20.9	139,234	20.7	139,691	20.6	144,564	21.1	0.8	0.3	3.5
Local Government	29,394	4.5	29,252	4.4	28,831	4.3	28,861	4.2	-0.5	-1.4	0.1
Parastatal	60,521	9.2	60,382	9.0	59,664	8.8	58,536	8.6	-0.2	-1.2	-1.9
Private	431,575	65.4	442,378	65.9	449,057	66.3	452,564	66.1	2.5	1.5	0.8
Total	659,582	100	671,246	100	677,243	100	684,525	100	1.8	0.9	1.1

Source: CSO, Employment and Earnings Inquiry

PRELIMINARY POPULATION DISTRIBUTION BY DISTRICT AND RESIDENCE, ZAMBIA 2010			
District	RURAL TOTAL	URBAN TOTAL	DISTRICT TOTAL
Chibombo	291,288	2,477	293,765
Kabwe	.	202,914	202,914
Kapiri-Mposhi	197,754	43,087	240,841
Mkushi	132,162	19,641	151,803
Mumbwa	196,081	22,247	218,328
Serenje	142,652	17,500	160,152
CENTRAL PROVINCE TOTAL	959,937	307,866	1,267,803
Chililabombwe	14,783	75,747	90,530
Chingola	30,415	179,658	210,073
Kalulushi	23,104	73,102	96,206
Kitwe	17,896	504,196	522,092
Luanshya	23,345	129,772	153,117
Lufwanyama	75,542	.	75,542
Masaiti	102,503	.	102,503
Mpongwe	91,765	.	91,765
Mufulira	11,285	150,316	161,601
Ndola	.	455,194	455,194
COPPERBELT PROVINCE TOTAL	390,638	1,567,985	1,958,623
Chadiza	101,505	2,750	104,255
Chama	93,761	7,651	101,412
Chipata	339,257	113,171	452,428
Katete	227,596	13,222	240,818
Lundazi	298,264	16,017	314,281
Mambwe	71,074	.	71,074
Nyimba	77,643	8,041	85,684
Petauke	311,746	26,033	337,779
EASTERN PROVINCE TOTAL	1,520,846	186,885	1,707,731
Chiengi	109,147	.	109,147
Kawambwa	100,420	30,260	130,680
Mansa	143,465	74,138	217,603
Milenge	43,649	.	43,649
Mwense	98,292	19,698	117,990
Nchelenge	113,004	34,923	147,927
Samfya	171,662	20,318	191,980
LUAPULA PROVINCE TOTAL	779,639	179,337	958,976
Chongwe	175,418	12,551	187,969
Kafue	134,641	108,113	242,754
Luangwa	20,082	5,212	25,294
Lusaka	.	1,742,979	1,742,979
LUSAKA PROVINCE TOTAL	330,141	1,868,855	2,198,996
Chilubi	76,911	.	76,911
Chinsali	130,726	17,119	147,845
Isoka	146,782	17,628	164,410
Kaputa	104,444	9,041	113,485
Kasama	124,256	113,779	238,035
Luwingu	120,229	14,197	134,426
Mbala	188,143	25,111	213,254
Mpika	171,788	39,637	211,425
Mporokoso	85,054	15,879	100,933
Mpulungu	70,274	26,048	96,322
Mungwi	137,876	6,661	144,537
Nakonde	76,634	41,383	118,017
NORTHERN PROVINCE TOTAL	1,433,117	326,483	1,759,600

PRELIMINARY POPULATION DISTRIBUTION BY DISTRICT AND RESIDENCE, ZAMBIA 2010			
District	RURAL TOTAL	URBAN TOTAL	DISTRICT TOTAL
Chavuma	33,893	.	33,893
Kabompo	69,279	21,881	91,160
Kasempa	64,557	1,173	65,730
Mufumbwe	55,099	.	55,099
Mwinilunga	117,078	15,610	132,688
Solwezi	152,119	86,932	239,051
Zambezi	78,632	10,209	88,841
NORTH-WESTERN PROVINCE TOTAL	570,657	135,805	706,462
Choma	186,793	57,387	244,180
Gwembe	51,290	1,421	52,711
Itezhi-tezhi	52,391	12,202	64,593
Kalomo	235,401	18,810	254,211
Kazungula	98,292	.	98,292
Livingstone	5,137	136,897	142,034
Mazabuka	178,962	82,306	261,268
Monze	155,045	40,876	195,921
Namwala	94,931	6,658	101,589
Siavonga	64,514	25,273	89,787
Sinazongwe	92,389	9,818	102,207
SOUTHERN PROVINCE TOTAL	1,215,145	391,648	1,606,793
Kalabo	132,298	670	132,968
Kaoma	162,347	16,979	179,326
Lukulu	73,242	10,660	83,902
Mongu	128,905	49,549	178,454
Senanga	113,395	13,579	126,974
Sesheke	82,679	11,933	94,612
Shang'ombo	85,288	.	85,288
WESTERN PROVINCE TOTAL	778,154	103,370	881,524
ZAMBIA TOTAL			13,046,508

SOURCE: CSO, 2010 Census of Population and Housing Preliminary Results

INFLATION TRENDS 1990-2010

Year	Year on Year Inflation
1990	110.6
1991	99.7
1992	180.7
1993	128.1
1994	38.3
1995	46.0
1996	35.2
1997	18.6
1998	30.6
1999	20.6
2000	30.1
2001	18.7
2002	26.7
2003	17.2
2004	17.5
2005	15.9
2006	8.2
2007	8.9
2008	16.6
2009	9.9
2010	7.9

Source: CSO, Prices Statistics

Interest Rates

End of Period	COMMERCIAL BANKS		CENTRAL BANK	TREASURY BILLS
	Weighted Lending Rates	Lending Rates	Interest Rates	YIELD RATE 91 DAYS
1990	-	-	34.0	-
1991	-	-	47.0	-
1992	-	-	54.0	-
1993	-	-	72.0	-
1994	36.2	-	25.4	-
1995	47.7	-	51.5	-
1996	57.4	69.0	70.0	-
1997	37.9	49.3	23.3	-
1998	37.4	37.0	43.4	-
1999	42.6	40.4	46.2	-
2000	37.6	45.9	44.1	-
2001	46.7	54.6	52.5	-
2002	42.5	50.0	34.0	-
2003	38.0	45.3	21.3	-
2004 MAR	31.8	39.1	9.6	-
Jun	29.8	36.9	7.8	-
Sep	30.0	37.4	14.7	-
Dec	29.8	37.1	18.3	-
2005 JAN	28.0	35.3	18.4	-
Feb	28.6	35.9	18.8	-
Mar	28.1	35.4	18.2	-
Apr	28.0	35.1	17.8	-
May	28.1	35.1	16.0	-
Jun	28.6	35.6	15.9	-
Jul	28.2	35.2	16.5	-
Aug	28.3	35.3	16.4	-
Sep	28.2	34.9	16.9	-
Oct	28.2	34.5	16.9	-
Nov	28.2	34.5	17.4	-
Dec	27.6	33.9	17.1	-
2006 JAN	26.7	33.0	17.1	15.1
Feb	26.4	32.7	16.1	14.1
Mar	25.4	31.6	14.7	12.7
Apr	25.2	31.4	11.0	9.0
May	22.8	29.0	8.4	6.4
Jun	21.6	27.8	7.5	5.5
Jul	21.7	27.9	8.6	6.6
Aug	21.7	27.9	9.6	7.6
Sep	21.6	27.8	10.9	8.6
Oct	21.6	27.8	12.3	10.3
Nov	21.6	27.8	11.1	9.1
Dec	21.6	27.9	10.7	8.7
2007 JAN	21.0	27.3	11.1	9.1
Feb	21.0	27.3	11.8	9.8
Mar	20.3	26.4	12.8	10.8
Apr	18.2	24.3	14.0	12.0
May	18.2	24.3	13.2	11.2
Jun	18.2	24.3	12.9	10.9
Jul	18.2	24.3	13.6	11.6
Aug	18.2	24.3	13.4	11.4
Sep	18.2	24.3	14.0	12.0
Oct	18.2	24.3	13.5	11.5
Nov	18.2	24.3	12.8	10.8
Dec	18.3	24.4	13.5	11.5
2008 JAN	18.4	24.5	13.2	11.2
Feb	18.3	24.4	12.6	10.6
Mar	18.2	24.3	12.9	10.9
Apr	18.2	24.3	13.0	11.0
May	18.2	24.3	14.1	12.1
Jun	18.5	24.6	14.1	12.1
Jul	18.6	24.7	14.1	12.1
Aug	18.6	24.7	14.3	12.3
Sep	19.6	25.7	14.5	12.5

End of Period	COMMERCIAL BANKS		CENTRAL BANK	TREASURY BILLS
	Weighted Lending Rates	Lending Rates	Interest Rates	YIELD RATE 91 DAYS
Oct	20.6	26.7	15.3	13.3
Nov	20.6	26.7	12.0	13.9
Dec	20.8	26.9	15.9	13.9
2009 JAN	20.9	27.0	15.8	13.8
Feb	20.9	27.0	16.3	14.3
Mar	20.9	27.0	16.0	14.0
Apr	20.7	26.6	16.2	14.2
May	21.6	27.8	15.9	13.9
Jun	22.4	28.9	15.6	13.6
Jul	22.4	28.9	17.1	15.1
Aug	23.0	29.5	18.1	16.1
Sep	23.1	29.6	17.5	15.5
Oct	23.1	29.6	16.6	14.6
Nov				
Dec				

Source: Bank of Zambia

ZAMBIA'S ANNUAL TOTAL EXPORTS IN ABSOLUTE ZAMBIAN KWACHA AND U S DOLLAR 2000-2010

Flow	Total Exports	
Year	ZMK	USD
2000:	2,716,557,648,136	869,485,416
2001:	3,537,206,913,419	978,788,277
2002:	4,069,916,925,012	944,356,533
2003:	4,642,039,643,203	979,298,782
2004:	7,526,280,115,612	1,577,240,766
2005:	9,612,909,460,871	2,176,641,598
2006:	13,410,945,234,225	3,681,524,702
2007:	18,399,133,746,013	4,617,454,325
2008:	18,653,009,286,684	5,098,688,004
2009:	21,364,760,204,454	4,312,054,540
2010:	34,496,762,223,192	7,200,267,056
Total:	138,429,521,400,821	32,435,799,999

NOTE: 2000-2007 FIGURES ARE UNDER SPECIAL TRADE SYSTEM WHILE 2008 TO 2010 FIGURES ARE UNDER GENERAL TRADE SYSTEM

Source: CSO, International Trade Statistics, 2010

ZAMBIA'S ANNUAL IMPORTS IN ABSOLUTE ZAMBIAN KWACHA AND U S DOLLAR 2000-2010

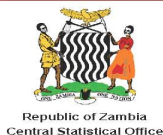
Flow	IMPORT	
Year	ZMK	USD
2000:	2,751,563,199,592	871,386,492
2001:	3,900,496,869,495	1,079,955,769
2002:	4,732,881,915,324	1,103,070,912
2003:	7,439,867,256,553	1,573,309,968
2004:	10,279,302,826,391	2,150,649,040
2005:	11,466,668,652,907	2,579,688,391
2006:	11,049,770,813,126	3,023,996,472
2007:	15,945,289,847,742	4,006,980,387
2008:	18,476,489,239,723	5,060,482,666
2009:	18,941,137,478,672	3,792,642,675
2010:	25,507,270,190,029	5,320,961,454
Total:	130,490,738,289,554	30,563,124,226

NOTE: 2000-2007 FIGURES ARE UNDER SPECIAL TRADE SYSTEM WHILE 2008 TO 2010 FIGURES ARE UNDER GENERAL TRADE SYSTEM

Source: CSO, International Trade Statistics, 2010

**Kindly pass through our Stand at the 2011
Agriculture and Commercial Show and Collect a copy of the Statistician**

THE STATISTICIAN



Mission Statement

"To coordinate and Provide timely, quality and credible official statistics for use by Stakeholders and clients for Sustainable Development"

Volume One

Serving Your Data Needs

2011

Zambia's Population increases to 13,046,508

Foreword



John Kalumbi

ACTING DIRECTOR
OF CENSUS AND STATISTICS

The Central Statistical Office (CSO) is a department under the Ministry of Finance and National Planning (MoFNP). According to the Census and Statistics Act of the Laws of Zambia, CSO's mandate is to collect and analyse official data on economic and social indicators that are disseminated on a timely basis.

The Central Statistical Office has four Divisions namely; Economic and Financial Statistics; Agriculture and Environment Statistics; Social Statistics and Information, Research and Dissemination. Each division is headed/managed by a Deputy Director.

The Central Statistical Office (CSO) through its Information, Research and Dissemination (IR&D) Division, in its attempt to provide highlights of CSO's

work, has produced the first edition of "THE STATISTICIAN". This publication has not only laboured to provide user-friendly data but has also given an insight into the operations of the Department.

Through this publication, our data users will gain access to a variety of statistical data on Socio-economic indicators. Some of the relevant information to be found in this publication will include statistics on Agriculture, Gender, Demography, Inflation rates, External trade, National accounts, just to mention a few.

It is our wish that through this publication, media institutions, policy makers, the donor community, Non Governmental Organizations (NGO)'s, researchers, academicians and the general public will make use of this data and information for sustainable national development.

I would like to urge our readers and users of statistical information to send us any comments that may enhance statistical production and contribute to the improvement of this Newsletter.

The preliminary population count from the 2010 Census of Population and Housing for Zambia is 13,046,508 as at October 2010. Of the 13,046,508 persons, 6,394,455 were males while 6,652,053 were females

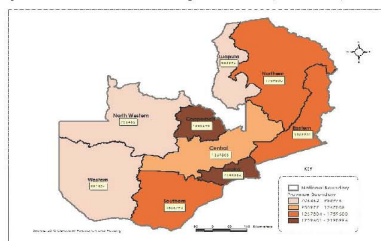
The regional distribution of the population shows that 7,978,274 people (61 percent) resided in rural areas

and 5,068,234 (39 percent) resided in the urban areas.

At provincial level, Lusaka had the largest population with 2,198,996, followed by Copperbelt with 1,958,623, Northern with 1,759,600, Eastern with 1,707,731 and Southern with 1,606,793.

The province with the least population was North-western with 706,462.

Population Distribution by Province, Zambia, 2010



Annual Rate of Population Growth

The average annual population growth rate for Zambia during the inter-censal periods 1990 - 2000 and 2000 - 2010 shows that Zambia's population grew at an average annual rate of 2.8 percent in the 2000 - 2010 inter-censal period compared to a growth of 2.4 percent in the 1990 - 2000 period.

At provincial level, Lusaka had the highest annual population growth rate in the period 2000 - 2010 at 4.7 percent followed by Northern (3.4 percent) and Southern (2.9 percent). Western Province had the lowest annual population growth rate in the same period of 1.4 percent.

Population Density

Population Density is herein defined as the total number of people per square kilometre. The Population Density of Zambia increased from 7.5 in 1980 to 9.8 in 1990 to 13.1 in 2000 and now stands at 17.3 persons per square kilometre.

The most densely populated province in Zambia is Lusaka whose density increased from 31.6 in 1980 to 45.1 in 1990 to 63.5 in 2000 and 100.4 persons per square kilometre in 2010. The second most densely populated province is Copperbelt

with a density of 62.5 persons per square kilometre. In the 1980 and 1990 Censuses, the density of Copperbelt Province was higher than that of Lusaka Province. North-western Province had the least density of 5.6 persons per square kilometre in 2010

Overall, the Population Density for Zambia increased from 13.1 persons per square kilometre in 2000 to 17.3 in 2010 (Details from 2010 Census Preliminary Report available at CSO).

Contents

Social Statistics

- 2010 Preliminary Census Highlights
- Post Enumeration Survey
- Population and Demography Unit

Economic Statistics

- Consumer Price Index (CPI)
- Appreciating Statistics in International Trade of Goods
- Understanding Gross Domestic Product (GDP)

Agriculture Statistics

- Crop Forecast Survey
- National Food Balance Sheet for Zambia

Information, Research and Dissemination

- National Data Archives (NADA)
- Gender Equality: A requirement for attaining the Millennium Development Goals.
- 2010 Census Data Capturing

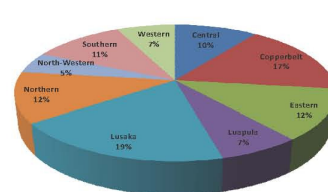
Electoral Information

In Zambia, the voting age is 18 years and above. Any person who is aged 18 years and above is therefore eligible to vote in any Presidential, Parliamentary and local government elections.

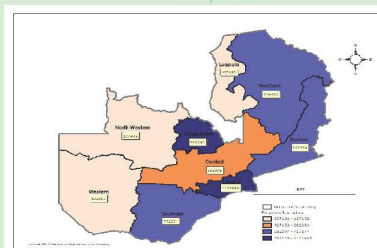
Number of Eligible Voters

The total number of eligible voters from the 2010 Census was 6,069,753 representing 47 percent of the total population of Zambia.

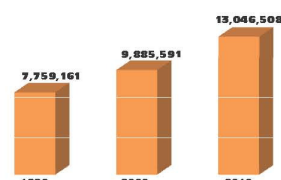
Percent Share of Eligible Voters by Province, 2010



Number of Eligible Voters by Province, Zambia, 2010



ZAMBIA'S POPULATION



Surveys/Activities Being undertaken

- ☞ 2010 Census of Population and Housing Data Processing
- ☞ 2010 Living Conditions Monitoring Survey VI Data Analysis and Report Writing
- ☞ 2011 Crop Forecasting Survey data analysis
- ☞ Sample Vital Registration with Verbal Autopsy (SAVVY)
- ☞ Formal Sector Quarterly Employment and Earnings Inquiry, 1st and 2nd Quarter 2010

Available

- ☞ 2009/2010 Crop Forecasting Survey
- ☞ 2009 Zambia Sexual Behaviour Survey (ZSBS)
- ☞ Employment and Earnings Inquiry Report, January 2006
- ☞ National Accounts Statistics Bulletin No.9 2005
- ☞ Labour-Force Survey Report, 2005
- ☞ 2007 Zambia Demographic and Health Survey (ZDHS)
- ☞ 2010 Census of population and Housing Preliminary Report (both Hard and soft copy)

Subscribe for your free electronic copy of “The Monthly” online at www.zamstats.gov.zm

The Editorial Team would like to thank all Media Institutions and Users of.....

“The Monthly Bulletin”

Thank you for supporting us

Secretariat

John Kalumbi	- Acting Director
Peter Mukuka	- Deputy Director
Mate Mate	- Principal Research Officer
Linda N. Chonya	- Senior Research Officer
Etambuyu Lukonga	- Documentalist
Anthony Nkole	- Desktop Publishing Officer
Perry Musenge	- Assistant Desktop Publishing Officer
Petronella Kaputu	- Press Liaison Officer
Chisuwa S. Nalishuwa	- Assistant Field Co-ordinator
Cecilia M. Munjita	- Librarian
Humphrey Zimba	- Dissemination Officer

Editorial Team

John Kalumbi	- Acting Director
Peter Mukuka	- Deputy Director (IRD)
Modesto Banda	- Deputy Director (AG)
William Mayaka	- Deputy Director (SOC)
Goodson Sinyenga	- Deputy Director (ECON)
Shebo Nalishebo	- Statistician
Josephine C. Banda	- Statistician
Gerson Banda	- Statistician
Palver Sikanyiti	- Statistician
Lubinda Mukata	- Statistician