



Republic of Zambia

# The Monthly

## Central Statistical Office

Volume 114

Website: [www.zamstats.gov.zm](http://www.zamstats.gov.zm)

October, 2012

### Foreword

Welcome to the Monthly presentation organised by the Dissemination Branch of the Central Statistical Office (CSO). The CSO embarks on vigorous information delivery strategy to major stakeholders and the media institutions in order to increase utilisation of statistical products and services. The office produces a number of statistical products in the Economic, Social, Agricultural and Environmental areas. The information collected in these areas may be used for various purposes including policy formulation, planning, implementation, monitoring and evaluation of programmes and projects.

This Monthly publication is an attempt to provide highlights of CSO's work and how it can help media institutions and the general public to make use of data and information for sustainable national development and decision-making.

I would like to urge our readers and users of statistical information to send to us any comments that may enhance statistical production and contribute to the improvement of this bulletin.

John Kalumbi  
**Director of Census and Statistics**

25<sup>th</sup> October, 2012

### Inside this Issue

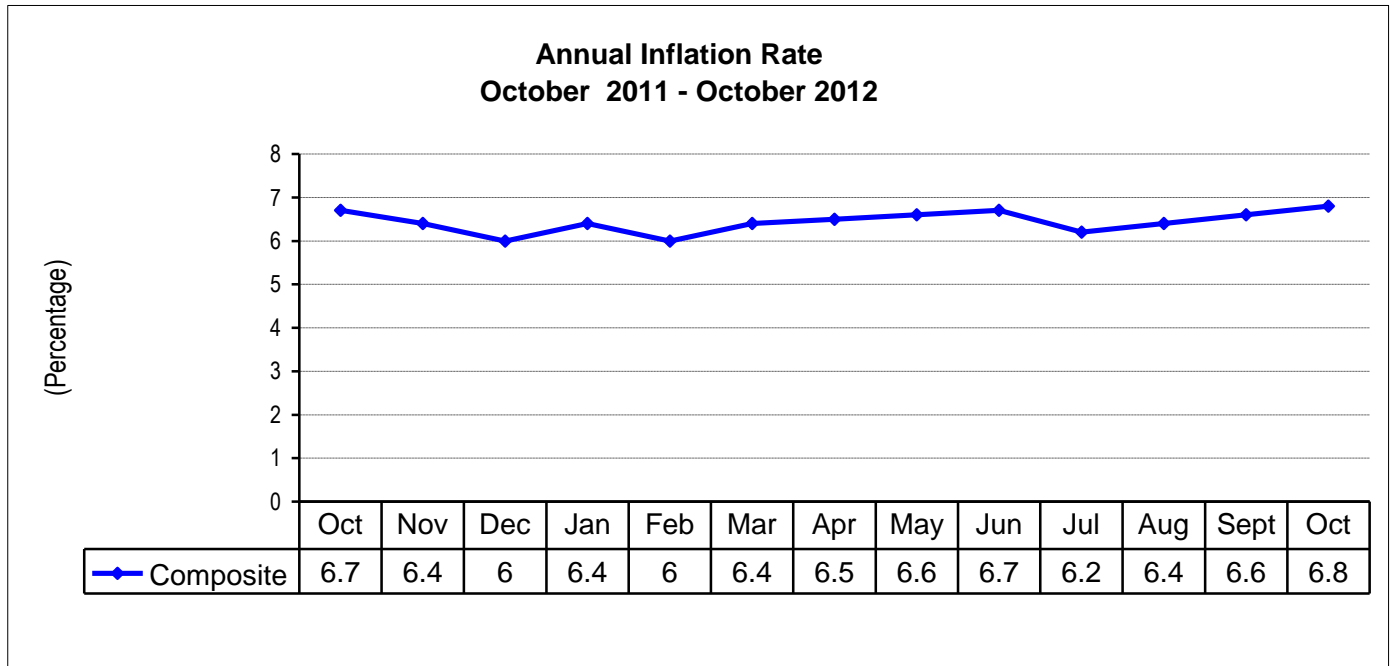
- **October Inflation increases to 6.8 percent**
- **September 2012 records Trade Surplus**
- **Activities Being Undertaken**
- **Selected Socio - Economic Indicators**

# INFLATION

## October Inflation increases to 6.8 percent

The annual rate of inflation, as measured by the all items Consumer Price Index (CPI), increased by 0.2 percentage points, from 6.6 percent in September 2012 to 6.8 percent in October 2012. This means that on

average, prices increased by 6.8 percent between October 2011 and October 2012. The increase in the annual inflation is attributed to increases in prices of food and some non-food items.



Source: CSO, Prices Statistics, 2012

## Movements in Annual Inflation Rates for CPI Main Groups

Between September 2012 and October 2012, the annual rate of inflation increased for Food and non-alcoholic beverages; Housing, water, electricity, gas, and other fuels; Health; Communication; and Restaurant and hotel. The annual rate of inflation decreased for

Alcoholic beverages and tobacco; Clothing and footwear; Furnishing, household equipment and routine house maintenance; Transport; Recreation and culture; Education; and Miscellaneous goods and services.

## Annual Inflation Rate: CPI Main Groups

	All Items	Food & Non-alcoholic beverages	Alcoholic beverages & Tobacco	Clothing & footwear	Housing, Water, Electricity, Gas & Other fuels	Furnishings, Household Equip., Routine Hse Mtc	Health	Transport	Communication	Recreation & Culture	Education	Restaurant & Hotel	Miscellaneous Goods & Services
	<b>1000</b>	<b>534.9</b>	<b>15.2</b>	<b>80.8</b>	<b>114.1</b>	<b>82.4</b>	<b>8.2</b>	<b>58.1</b>	<b>12.9</b>	<b>13.8</b>	<b>26.6</b>	<b>3.4</b>	<b>49.7</b>
Jan '11 - Jan '10	6.3	4.2	1.4	4.4	17.2	7.0	6.4	8.0	-0.1	3.5	6.0	8.2	6.3
Feb '11 - Feb '10	6.5	4.3	2.6	5.9	18.2	7.5	7.7	5.4	0.6	4.2	7.4	8.3	6.4
Mar '11 - Mar '10	6.6	4.1	2.1	7.6	18.3	6.9	6.5	5.9	0.2	2.8	9.3	9.5	6.5
Apr '11 - Apr '10	6.3	3.7	2.9	9.5	16.1	6.0	6.7	7.5	0.4	3.0	8.1	8.5	6.3
May '11 - May '10	6.3	3.5	5.0	9.4	18.3	6.3	7.2	5.6	0.4	5.2	7.4	7.4	5.8
Jun '11 - Jun '10	6.1	3.8	5.3	9.6	16.0	6.2	7.1	2.9	0.5	4.4	9.2	8.4	4.8
Jul '11 - Jul '10	6.9	5.0	4.8	10.0	15.3	7.4	6.3	3.4	0.4	6.8	8.2	5.5	5.5
Aug '11 - Aug '10	6.5	5.8	3.6	10.6	7.2	7.8	4.5	7.2	0.3	7.4	7.2	8.4	5.1
Sep '11 - Sep '10	6.6	6.1	3.8	9.0	7.7	8.9	5.2	6.4	0.0	7.0	8.2	6.3	4.5
Oct '11 - Oct '10	6.7	6.3	4.6	8.5	6.2	9.7	3.2	8.4	0.4	7.8	8.4	5.5	4.8
Nov '11 - Nov '10	6.4	6.0	4.0	8.7	6.4	8.5	6.1	6.7	0.6	7.8	9.4	6.4	3.0
Dec '11 - Dec '10	6.0	5.3	2.0	8.2	6.1	6.2	5.6	9.2	0.5	7.7	9.0	3.9	4.8
Jan '12 - Jan '11	6.4	6.1	2.4	9.3	6.1	7.0	8.1	8.5	1.1	8.0	8.6	5.2	3.1
Feb '12 - Feb '11	6.0	5.5	2.9	8.1	4.8	7.7	7.4	8.9	1.3	7.7	9.6	5.2	3.8
Mar '12 - Mar '11	6.4	6.4	3.5	7.9	4.9	7.7	7.4	7.8	1.2	8.1	7.9	3.0	4.7
Apr '12 - Apr '11	6.5	6.4	2.4	6.4	5.7	8.9	6.2	7.2	1.2	8.0	8.2	3.3	5.6
May '12 - May '11	6.6	6.8	3.3	6.0	5.3	8.6	5.6	6.6	1.1	7.1	9.3	3.2	6.3
Jun '12 - Jun '11	6.7	7.1	3.6	5.4	5.4	7.9	4.5	7.3	1.0	8.1	8.5	2.1	6.6
Jul '12 - Jul '11	6.2	6.3	5.2	5.6	5.3	6.9	5.4	5.9	1.7	7.2	9.6	4.6	6.8
Aug '12 - Aug '11	6.4	7.3	5.0	5.0	4.5	7.7	6.2	3.4	1.7	5.2	9.8	2.6	7.2
Sep '12 - Sep '11	6.6	7.5	5.9	5.7	3.5	6.3	6.9	6.0	2.2	5.7	9.5	4.2	7.7
Oct '12 - Oct '11	6.8	8.2	3.7	4.3	4.9	6.1	7.5	4.9	2.3	4.1	9.2	4.6	7.6

Source: CSO, Prices Statistics, 2012

## Contributions of different Items to Overall Inflation

Of the total 6.8 percent annual inflation rate recorded in October 2012, food products accounted for 4.2 percentage points, while

non-food products accounted for a total of 2.6 percentage points.

## Percentage Points Contributions of different items to Overall Inflation

ITEMS	September 2012	October 2012
Food and Non-alcoholic beverages	3.9	4.2
Alcoholic beverages and Tobacco	0.1	0.1
Clothing and footwear	0.4	0.3
Housing, Water, Electricity, Gas and Other fuels	0.5	0.6
Furnishings, Household Equipment, Routine house maintenance	0.5	0.5
Health	0.1	0.1
Transport	0.3	0.3
Communication	0.0	0.0
Recreation and Culture	0.1	0.1
Education	0.3	0.2
Restaurant and Hotel	0.0	0.0
Miscellaneous Goods and Services	0.4	0.4
<b>All items</b>	<b>6.6</b>	<b>6.8</b>

Source: CSO, Prices Statistics, 2012

## The Annual Food and Non-food Inflation Rates

The annual food inflation rate was recorded at 8.2 percent in October 2012 compared to 7.5 percent recorded in September 2012. This implies that there was a 0.7 percentage point increase in annual food inflation. The annual

non-food inflation rate decreased by 0.2 percentage points from 5.6 percent in September 2012 to 5.4 percent in October 2012.

### Annual Inflation Rates: Food and Non- Food Items

Period		Total	Food	Non-Food
Weight		1 000.00	534.85	465.15
2011	Jan '11 - Jan '10	6.3	4.2	8.6
	Feb '11 - Feb '10	6.5	4.3	9.1
	Mar '11 - Mar '10	6.6	4.1	9.4
	Apr '11 - Apr '10	6.3	3.7	9.2
	May '11 - May '10	6.3	3.5	9.5
	Jun '11 - Jun '10	6.1	3.8	8.7
	Jul '11 - Jul '10	6.9	5.0	8.9
	Aug '11 - Aug '10	6.5	5.8	7.3
	Sep '11 - Sep '10	6.6	6.1	7.3
	Oct '11 - Oct '10	6.7	6.3	7.2
	Nov '11 - Nov '10	6.4	6.0	6.8
	Dec '11 - Dec '10	6.0	5.3	6.6
2012	Jan '12 - Jan '11	6.4	6.1	6.8
	Feb '12 - Feb '11	6.0	5.5	6.5
	Mar '12 - Mar '11	6.4	6.4	6.4
	Apr '12 - Apr '11	6.5	6.4	6.5
	May '12 - May '11	6.6	6.8	6.3
	Jun '12 - Jun '11	6.7	7.1	6.2
	Jul '12 - Jul '11	6.2	6.3	6.0
	Aug '12 - Aug '11	6.4	7.3	5.5
	Sep '12 - Sep '11	6.6	7.5	5.6
	Oct '12 - Oct '11	6.8	8.2	5.4

Source: CSO, Prices Statistics, 2012

## The Month on Month Food and Non-food Inflation Rate

The month - on- month food inflation rate was recorded at 0.4 percent in October 2012 compared to 0.5 percent recorded in September 2012. This implies that the monthly food inflation rate decreased by 0.1

percentage points. Between September and October 2012, the non-food inflation rate reduced by 0.7 percentage points from 0.4 percent in September 2012 to -0.3 percent in October 2012.

## Month on month Inflation Rates: Food and Non Food Items, 2009 (2009 = 100)

Weight	Period	Total	Food	Non-Food
		1000.0	534.9	465.2
2011	Jan '11 - Dec '10	0.7	1.1	0.2
	Feb '11 - Jan '11	0.7	0.5	0.9
	Mar '11 - Feb '11	1.1	1.0	1.1
	Apr '11 - Mar '11	0.6	0.6	0.6
	May '11 - Apr '11	0.3	-0.1	0.7
	Jun '11 - May '11	0.0	-0.6	0.6
	Jul '11 - Jun '11	1.2	1.5	0.9
	Aug '11 - Jul '11	0.6	0.1	1.1
	Sep '11 - Aug '11	0.4	0.3	0.4
	Oct '11 - Sep '11	-0.2	-0.2	-0.1
	Nov '11 - Oct '11	0.1	0.4	-0.2
	Dec '11 - Nov '11	0.5	0.6	0.3
2012	Jan '12 - Dec '11	1.1	1.8	0.3
	Feb '12 - Jan '12	0.3	-0.1	0.6
	Mar '12 - Feb '12	1.5	1.9	1.0
	Apr '12 - Mar '12	0.7	0.5	0.8
	May '12 - Apr '12	0.4	0.3	0.5
	Jun '12 - May '12	0.0	-0.4	0.5
	Jul '12 - Jun '12	0.7	0.8	0.7
	Aug '12 - July '12	0.9	1.1	0.6
	Sep '12 - Aug '12	0.5	0.5	0.4
	Oct '12 - Sep '12	0.1	0.4	-0.3

Source: CSO, Prices Statistics, 2012

### Provincial Contribution to overall Inflation

Copperbelt Province had the largest provincial contribution of 1.8 percentage points to the overall annual inflation rate of 6.8 percent recorded in October 2012. This was

followed by Lusaka Province which contributed 1.3 percentage points. The lowest contribution was from Western Province with 0.1 percentage points.

### Provincial Contribution to overall Inflation

Province	September 2012	October 2012
Central	0.8	0.8
Copperbelt	1.8	1.8
Eastern	1.0	0.8
Luapula	0.5	0.6
Lusaka	1.0	1.3
Northern/ Muchinga	0.2	0.5
North Western	0.3	0.2
Southern	0.8	0.7
Western	0.2	0.1
<b>All items</b>	<b>6.6</b>	<b>6.8</b>

Source: CSO, Prices Statistics, 2012

### Changes in Inflation Rates for Provinces

The annual rate of inflation increased for Luapula, Lusaka and Northern/Muchinga provinces between September and October 2012 while it decreased for Central, Eastern, North-Western, Southern and Western provinces.

Luapula Province had the highest annual rate of inflation at 10.7 percent while Western Province had the lowest at 3.3 percent in October, 2012.

## Provincial Price Indices and inflation Rates

Province	Weights	Index (2009 = 100)			Percentage change over one month			Percentage change over 12 months		
		Aug	Sept	Oct	Aug	Sept	Oct	Aug	Sept	Oct
	1000	124.1	124.7	124.8	0.7	0.5	0.1	6.4	6.6	6.8
Central	107.19	122.1	123.7	123.3	1.1	1.3	-0.4	8.9	8.0	7.5
Copperbelt	219.68	124.1	124.9	125.4	0.1	0.7	0.4	8.2	8.1	8.1
Eastern	88.98	128.0	128.0	128.7	1.5	0.1	0.0	11.1	11.3	9.6
Luapula	50.60	125.3	125.5	125.5	1.1	0.1	0.0	10.5	10.2	10.7
Lusaka	283.89	122.7	123.6	123.4	0.5	0.7	-0.1	3.0	3.5	4.6
Northern/ Muchinga	65.72	125.9	125.3	125.5	1.5	-0.5	0.2	2.1	3.3	7.9
North western	32.33	123.0	123.8	125.0	1.7	0.6	1.0	7.2	7.9	7.0
Southern	109.19	127.4	127.1	126.7	0.9	-0.3	-0.3	7.8	6.7	6.4
Western	42.42	118.8	119.8	119.6	0.3	0.9	-0.2	3.9	6.1	3.3

Source: CSO, Prices Statistics, 2012

## National Average Prices of Selected Products

A comparison of retail prices between September 2012 and October 2012 shows that the national average price of a 25 kg bag of breakfast Mealie meal increased by 0.2 percent from K48,528 to K48,606. The national average price of a 25 kg bag of roller mealie meal increased by 2.5 percent from K34,177 to K35,038. The national average price of a 20 litre tin of Maize grain increased by 5.9 percent from K18,115 to K19,182. The national average price of Rape (vegetable)

increased by 10.8 percent from K2,399 in September 2012 to K2,658 in October 2012.

The average price of 1kg of dried Kapenta, (chisese) decreased by 4.0 percent from K43,520 to K41,798 while 1kg of Dried Kapenta (Mpulungu) decreased by 1.7 percent from K72,273 to K71,036. The average price of 1kg of Groundnuts decreased by 6.2 percent from K10,062 to K9,436.

## National Average Prices of Selected Products

Description	2012								Percentage Change Oct/Sept
	Mar 12	Apr 12	May 12	Jun 12	Jul 12	Aug 12	Sep 12	Oct 12	
Breakfast Mealie Meal	44,388	42,413	42,103	42,054	42,074	43,119	48,528	48,606	0.2
Roller Mealie Meal	32,858	32,733	31,619	31,553	31,464	32,121	34,177	35,038	2.5
Maize grain	19,487	18,618	17,888	17,326	17,906	17,878	18,115	19,182	5.9
Fillet Steak	37,461	36,018	38,906	36,440	36,974	38,423	32,190	32,718	1.6
Rump Steak	34,136	33,993	35,677	33,922	34,627	35,750	31,142	30,863	-0.9
Brisket	26,624	26,997	27,635	26,920	26,991	27,773	25,778	26,418	2.5
Mixed Cut	25,233	24,649	25,302	25,739	24,962	25,271	24,783	24,751	-0.1
T-bone	33,525	33,277	33,698	33,530	33,626	34,385	30,495	30,210	-0.9
Sausages	31,204	29,636	30,357	32,260	32,100	32,399	29,665	31,609	6.6
Mince Meat	31,223	31,869	32,243	31,174	32,635	32,322	31,765	32,212	1.4
Ox-liver	23,635	24,235	24,486	24,402	24,340	24,810	24,758	24,963	0.8
Pork Chops	24,972	25,044	23,732	24,441	23,555	25,119	28,541	27,468	-3.8
Goat Meat	15,627	17,058	16,251	17,196	18,539	17,301	18,287	18,515	1.2
Mutton	48,615	50,423	51,121	49,620	60,005	51,742	48,523	49,794	2.6
Buka Buka	17,179	17,485	17,515	18,071	18,447	18,981	20,255	20,408	0.8
Fresh Kapenta	7,008	7,362	7,961	7,729	8,510	8,460	8,665	8,556	-1.3
Dried Bream	48,715	47,714	45,693	41,316	46,568	44,264	43,715	43,065	-1.5
Dried Kapenta Mpulungu	63,333	71,534	75,987	79,475	72,346	78,288	72,273	71,036	-1.7
Dried Kapenta Siavonga	72,500	68,971	72,565	66,354	71,535	76,775	80,540	80,101	-0.5
Dried Kapenta Chisense	42,963	49,890	59,157	55,210	51,587	51,135	43,520	41,798	-4.0
Cooking oil Imported	11,178	11,442	11,684	11,627	11,324	11,333	11,539	11,467	-0.6
Cooking oil Local	32,659	33,436	34,008	34,319	34,673	34,711	34,628	34,957	0.9
Groundnuts	10,172	10,322	9,408	9,475	9,277	9,790	10,062	9,436	-6.2
Rape	3,404	3,261	3,226	2,996	2,768	2,847	2,399	2,658	10.8
Cabbage	1,980	1,994	2,132	1,943	1,756	1,634	1,673	1,707	2.0
Tomatoes	5,153	5,363	4,933	4,335	3,683	3,885	3,426	3,549	3.6
Dried beans	11,118	10,338	10,204	10,351	10,348	10,441	10,479	10,414	-0.6
Toyota hilux	262,815,004	261,428,640	256,130,749	274,202,994	274,202,994	257,467,600	257,467,600	257,467,600	0.0
Toyota corolla	219,438,028	218,280,480	213,856,821	228,946,458	228,946,458	214,973,200	214,973,200	214,973,200	0.0
Hammer milling charge	3,089	3,041	3,139	3,232	3,233	3,273	3,416	3,526	3.2

# INTERNATIONAL MERCHANDIZE TRADE

## September 2012 records Trade Surplus

Zambia recorded a trade surplus valued at K451.9 Billion in September 2012, from K568.5 Billion recorded in August 2012. This means that the country exported more in September 2012 than it imported, in nominal terms.

The country has continued to record trade surpluses since January 2012 with the highest valued at K568.5 Billion recorded in August 2012 followed by K451.9 Billion recorded in September 2012. The lowest trade surplus was recorded in February 2012, valued at K47.4 Billion.

### Total Exports (fob) and Imports (cif), January to September 2012\*, (K' Millions)

Months	Imports(cif)	Domestic Exports(fob)	Re-Exports(fob)	Total Exports(fob)	Trade Balance
January	4,004,039	3,906,243	449,037	4,355,280	351,242
February	3,573,649	3,433,995	187,006	3,621,001	47,352
March	3,509,458	3,307,299	281,769	3,589,068	79,611
<b>Quarter 1</b>	<b>11,087,146</b>	<b>10,647,537</b>	<b>917,813</b>	<b>11,565,350</b>	<b>478,204</b>
April	3,332,865	3,119,421	359,615	3,479,036	146,171
May	3,690,939	3,649,419	319,797	3,969,215	278,276
June®	3,370,593	3,235,785	296,309	3,532,094	161,501
<b>Quarter 2</b>	<b>10,394,397</b>	<b>10,004,624</b>	<b>975,720</b>	<b>10,980,344</b>	<b>585,948</b>
July®	3,436,012	3,529,952	288,397	3,818,348	382,336
August®	3,516,886	3,760,314	325,061	4,085,375	568,489
September*	3,919,158	4,101,336	269,681	4,371,018	451,859
<b>Quarter 3</b>	<b>10,872,056</b>	<b>11,391,602</b>	<b>883,138</b>	<b>12,274,741</b>	<b>1,402,685</b>
<b>Total</b>	<b>32,353,599</b>	<b>32,043,763</b>	<b>2,776,671</b>	<b>34,820,435</b>	<b>2,466,836</b>

Source: CSO, International Trade Statistics, 2012

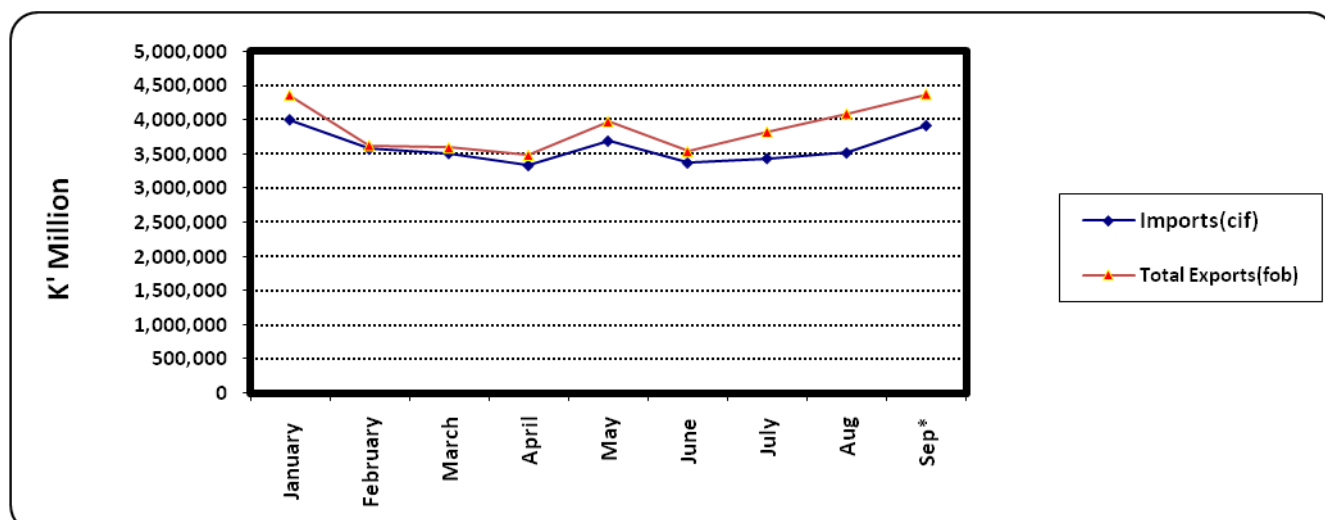
These trade data are compiled based on the General Trade System

Note: (\*) Provisional

(®) Rev



### Total Exports (fob) and Imports (cif), January to September 2012\*, (K' Millions)



Source: CSO, International Trade Statistics, 2012

### Exports by Major Product Categories, September and August 2012

Zambia's major export products in September 2012 were from the Intermediate goods category (*mainly comprising copper cathodes and sections of refined copper*) accounting for about 85.0 percent. Other exports were from the Raw materials, Consumer goods and Capital goods categories which

collectively accounted for about 15.0 percent of total exports in September 2012. This implies that between September and August 2012, the country has been a net exporter of Intermediate goods, mainly Metals and their articles, accounting for an average of 85.7 percent of the total exports.

### Exports by Major Product Categories September and August 2012

Description	September 2012*		August 2012	
	Value (K' Million)	% Share	Value (K' Million)	% Share
Consumer Goods	179,984	4.1	216,250	5.3
Raw Materials	389,596	8.9	262,359	6.4
Intermediate Goods	3,714,928	85.0	3,527,159	86.3
Capital Goods	86,510	2.0	79,607	1.9
<b>Total:</b>	<b>4,371,018</b>	<b>100.0</b>	<b>4,085,375</b>	<b>100.0</b>

Source: CSO, International Trade Statistics, 2012

Note: (\*) Provisional  
(®) Revised

## Zambia's Metal Exports and Non-Traditional Exports (NTEs), September and August 2012

There has been an increase in the total value of Metals exports from K3,162.5 Billion in August 2012 to K3,370.0 Billion in September 2012. The overall contribution of Metals and their products to the total

export earnings in September and August 2012 averaged 77.3 percent. The share of NTEs recorded an average of 22.7 percent in revenue earnings between September and August 2012.

### Zambia's Metal Exports and Non-Traditional Exports (NTEs), September and August 2012

GROUP	September 2012*		August 2012	
	Value (K' Million)	% Share	Value (K' Million)	% Share
Traditional Exports (mainly Metals)	3,370,028	77.1	3,162,457	77.4
Non-Traditional Exports (NTEs)	1,000,989	22.9	922,918	22.6
<b>Total Exports</b>	<b>4,371,018</b>	<b>100.0</b>	<b>4,085,375</b>	<b>100.0</b>

Source: CSO, International Trade Statistics, 2012

Note: (\*) Provisional

(@) Revised

### Zambia's Major Export Destinations by Commodity in September 2012

Zambia's major export destination in September 2012 was Switzerland, which accounted for 41.6 percent. The major export products were Cathodes & Sections of Cathodes of refined Copper accounting for 90.7 percent.

China was the second major destination of Zambia's exports accounting for 33.2 percent. The major export product was Copper (excl. master) alloys, nes, unwrought (50.1 percent).

Congo DR was the third major export destination accounting for 6.1 percent. The main export products were raw cane sugar, in solid forms and Sulphuric acid; oleum in bulk which collectively accounted for 24.6 percent.

The fourth major destination of Zambia's exports was South Africa, accounting for 5.6 percent. The major export product was Cotton, not carded or combed (24.3 percent).

The fifth major export destination of Zambia's exports was the United Arab Emirates, accounting for 3.4 percent. The major export product was Cathodes & Sections of Cathodes of refined Copper, which accounted for 84.0 percent.

These five countries collectively accounted for 89.9 percent of Zambia's total export earnings in September 2012.

## Zambia's Five Major Export Destinations by Product for September 2012\*

Country / Hs-Code	Description	September 2012	
		Value (K' Million)	% Share
SWITZERLAND		1,820,201	100.0
74031100	Cathodes and sections of cathodes of refined copper	1,650,332	90.7
74031910	Copper blister	76,151	4.2
52010000	Cotton, not carded or combed	34,903	1.9
74091900	Plates, sheets and strip, of refined copper, uncoiled, >0.15mm thick	24,456	1.3
14042000	Cotton linters	17,007	0.9
28369910	Other carbonates; peroxocarbonates in bulk	15,098	0.8
74032900	Copper (excl. master) alloys, nes, unwrought	1,235	0.1
81059000	Other: Articles of cobalt, nes	587	0.0
44072100	Mahogany sawn or chipped lengthwise, sliced or peeled,...of thickness > 6mm	300	0.0
44079300	Wood sawn or chipped lengthwise, sliced or peeled,...of thickness > 6mm, of maple	81	0.0
Other Products		51	0.0
% of Total September Exports		41.6	
CHINA		1,449,160	100.0
74032900	Copper (excl. master) alloys, nes, unwrought	726,644	50.1
74031910	Copper blister	514,635	35.5
81059000	Other: Articles of cobalt, nes	139,808	9.6
74031100	Cathodes and sections of cathodes of refined copper	61,973	4.3
74061000	Copper powders of non-lamellar structure	2,244	0.2
26030000	Copper ores and concentrates	1,060	0.1
52030000	Cotton, carded or combed	640	0.0
26020000	Manganese ores/concentrates(inc.ferruginous), with manganese cont.of=>20%	438	0.0
44079900	Wood, nes sawn or chipped lengthwise, sliced or peeled, >6mm thick	379	0.0
44039900	Wood, nes in the rough..., (excl. treated)	271	0.0
Other Products		1,067	0.1
% of Total September Exports		33.2	
CONGO DR		266,027	100.0
17011300	Raw cane sugar ,in solid forms	39,241	14.8
28070010	Sulphuric acid; oleum in bulk	26,029	9.8
25223000	Hydraulic lime	22,536	8.5
28020010	Sulphur, sublimed or precipitated; colloidal sulphur - In bulk	18,698	7.0
15100000	Other oils and their fractions, obtained solely from olives, nes	15,481	5.8
11010000	Wheat or meslin flour	11,809	4.4
25232900	Portland cement (excl. white)	11,450	4.3
25030000	Sulphur of all kinds (excl. sublimed, precipitated and colloidal sulphur)	9,571	3.6
38249000	Chemical products and residual products of chemical industries, nes	7,979	3.0
36020090	Other prepared explosives, (excl. propellant powders)	6,814	2.6
Other Products		96,420	36.2
% of Total September Exports		6.1	
SOUTH AFRICA		246,250	100.0
52010000	Cotton, not carded or combed	59,735	24.3

Country / Hs-Code	Description	September 2012	
		Value (K' Million)	% Share
71081300	Semi-manufactured gold (incl. gold plated with platinum), non-monetary	58,068	23.6
74081100	Wire of refined copper, maximum cross-sectional dimension >6mm	38,474	15.6
85444900	Electric conductors, nes, for a voltage <=80 V, not fitted with connectors	18,691	7.6
84239000	Weighing machine weights of all kinds; parts of weighing machinery	9,249	3.8
84238900	Weighing machinery, nes, of weighing capacity >5000kg	7,357	3.0
12072000	Cotton seeds	6,923	2.8
72022100	Ferro-silicon, containing by weight >55% silicon	3,795	1.5
72142090	Iron/steel bars & rods, hotrolled, twisted/with deformtms from rolling proc. - Other	3,471	1.4
74031100	Cathodes and sections of cathodes of refined copper	2,199	0.9
Other Products		38,289	15.5
<b>% of Total September Exports</b>		<b>5.6</b>	
<b>UNITED ARAB EMIRATE</b>		147,886	100.0
74031100	Cathodes and sections of cathodes of refined copper	124,243	84.0
74091900	Plates, sheets and strip, of refined copper, uncoiled, >0.15mm thick	21,505	14.5
85171200	Telephones for cellular networks or for other wireless networks	1,919	1.3
22083000	Whiskies	59	0.0
24022000	Cigarettes containing tobacco	50	0.0
22087000	Liqueurs and cordials	40	0.0
22089000	Other spirituous beverages, nes	23	0.0
33079000	Other perfumery, cosmetic or toilet preparations, nes	11	0.0
18063200	Chocolate, etc, containing cocoa in blocks, slabs or bars, not filled	10	0.0
33030000	Perfumes and toilet waters	8	0.0
Other Products		18	0.0
<b>% of Total September Exports</b>		<b>3.4</b>	
<b>Other Destination</b>		<b>441,494</b>	<b>10.1</b>
<b>Total Value of September Exports</b>		<b>4,371,018</b>	

Source: CSO, International Trade Statistics, 2012

Note: (\*) Provisional

(R) Revised figures

## Export Market Shares by Regional Groupings, September and August 2012

Asia was the largest market for Zambia's total exports, accounting for 37.2 percent in September 2012. Within Asia, China was the dominant market in September 2012 with 89.0 percent. Other notable markets in Asia were the United Arab Emirates, Hong Kong, Singapore and India.

The Southern African Development Community (SADC) regional grouping was the second largest market for Zambia's total exports accounting for 17.1 percent in September 2012. Within SADC, Congo DR was the dominant market with 35.5

percent. Other notable markets in SADC were South Africa, Zimbabwe, Namibia and Mauritius.

The Common Market for Eastern and Southern Africa (COMESA) regional grouping was the third largest market for Zambia's total exports, accounting for 9.9 percent in September 2012. Within COMESA, Congo DR was the largest market, with 61.6 percent. Other notable markets in COMESA were Zimbabwe, Mauritius, Malawi and Kenya.

The European Union (EU) was the fourth largest market for Zambia's total exports accounting for 3.0 percent in September 2012. Within the EU, Belgium was the dominant market with 62.5 percent in

September 2012. Other notable markets were the United Kingdom, Netherlands, Slovenia and Germany.

### Export Market Shares by Regional Groupings, September and August 2012 (K' Millions)

GROUPING	September 2012*		GROUPING	August 2012®	
	Value (K' Million)	% Share		Value (K' Million)	% Share
<b>ASIA</b>	<b>1,627,668</b>	<b>100.0</b>	<b>ASIA</b>	<b>1,271,138</b>	<b>100.0</b>
China	1,449,160	89.0	China	1,072,452	84.4
United Arab Emirates	147,886	9.1	United Arab Emirates	155,756	12.3
Hong Kong	17,401	1.1	Hong Kong	15,258	1.2
Singapore	5,518	0.3	India	11,340	0.9
India	3,602	0.2	Singapore	8,893	0.7
Other ASIA	4,101	0.3	Other ASIA	7,440	0.6
<b>% of Total September Exports</b>	<b>37.2</b>		<b>% of Total August Exports</b>	<b>31.1</b>	
<b>SADC</b>	<b>749,443</b>	<b>100.0</b>	<b>SADC</b>	<b>859,011</b>	<b>100.0</b>
Congo (DR)	266,027	35.5	South Africa	321,318	37.4
South Africa	246,250	32.9	Congo (DR)	266,919	31.1
Zimbabwe	72,623	9.7	Zimbabwe	83,041	9.7
Namibia	58,152	7.8	Swaziland	38,712	4.5
Mauritius	30,723	4.1	Malawi	34,953	4.1
Other SADC	75,668	10.1	Other SADC	114,069	13.3
<b>% of Total September Exports</b>	<b>17.1</b>		<b>% of Total August Exports</b>	<b>21.0</b>	
<b>COMESA</b>	<b>432,162</b>	<b>100.0</b>	<b>COMESA</b>	<b>493,164</b>	<b>100.0</b>
Congo (DR)	266,027	61.6	Congo (DR)	266,919	54.1
Zimbabwe	72,623	16.8	Zimbabwe	83,041	16.8
Mauritius	30,723	7.1	Swaziland	38,712	7.8
Malawi	24,560	5.7	Malawi	34,953	7.1
Kenya	17,123	4.0	Mauritius	30,424	6.2
Other COMESA	21,106	4.9	Other COMESA	39,116	7.9
<b>% of Total September Exports</b>	<b>9.9</b>		<b>% of Total August Exports</b>	<b>12.1</b>	
<b>EUROPEAN UNION</b>	<b>129,864</b>	<b>100.0</b>	<b>EUROPEAN UNION</b>	<b>84,629</b>	<b>100.0</b>
Belgium	81,150	62.5	United Kingdom	50,396	59.5
United Kingdom	25,069	19.3	Luxembourg	13,319	15.7
Netherlands	7,784	6.0	Germany	5,927	7.0
Slovenia	6,628	5.1	Slovenia	5,401	6.4
Germany	3,617	2.8	Belgium	4,547	5.4
Other EU	5,616	4.3	Other EU	5,040	6.0
<b>% of Total September Exports</b>	<b>3.0</b>		<b>% of Total August Exports</b>	<b>2.1</b>	
<b>Total September Exports (fob)</b>	<b>4,371,018</b>		<b>Total August Exports (fob)</b>	<b>4,085,375</b>	

Source: CSO, International Trade Statistics, 2012

Note: (\*) Provisional

(R) Revised figures

## Imports by Major Product Categories, September and August 2012

Zambia's major import products by category in September 2012 were Capital goods, accounting for 40.4 percent. The Consumer goods category was second with 27.5 percent, followed by the Intermediate goods category with

18.3 percent. The Raw materials category was fourth with 13.8 percent. In September and August 2012, the country has been a net importer of Capital goods, contributing an average of 41.6 percent to the total imports.

### Imports (CIF) by Major Product Categories September and August 2012, (K' Millions)

Description	September 2012*		August 2012®	
	Value (K' Million)	% Share	Value (K' Million)	% Share
Consumer Goods	1,078,149	27.5	813500.1	23.1
Raw Materials	539,954	13.8	497,716	14.2
Intermediate Goods	719,145	18.3	705,654	20.1
Capital Goods	1,581,910	40.4	1,500,016	42.7
<b>Total:</b>	<b>3,919,158</b>	<b>100.0</b>	<b>3,516,886</b>	<b>100.0</b>

Source: CSO, International Trade Statistics, 2012

Note: (\*) Provisional

(R) Revised figures

## Zambia's Major Import Sources by Commodity in September 2012

The major source of Zambia's imports in September 2012 was South Africa, accounting for 34.4 percent. The major import product from South Africa was Dumpers for off-highway use, contributing 7.7 percent to the country's share of imports.

The second main source of Zambia's imports in September 2012 was Congo (DR), accounting for 13.4 percent of the total value of imports. The major import products from Congo (DR) were Copper Ores and Concentrates, accounting for 68.9 percent.

The third main source of Zambia's imports was Kuwait, which accounted for 8.3 percent. The major import products from Kuwait were Petroleum oils and oils obtained from bituminous minerals, which accounted for 100.0 percent to the country's share of imports.

Other sources of Zambia's imports were China and the United Arab Emirates, which collectively accounted for 12.1 percent to Zambia's Imports.

## Zambia's Five Major Import Sources by Product for September 2012\* (K' Millions)

Country / Hs-Code	Description	September 2012	
		Value (K' Million)	% Share
SOUTH AFRICA		1,346,852	100.0
87041000	Dumpers for off-highway use	103,583	7.7
87042110	Diesel Dual purpose vehicles for both persons & goods (twin cab, pickup) upto 5 tonnes	27,405	2.0
31023000	Ammonium nitrate	25,878	1.9
84295100	Self-propelled front-end shovel loaders	23,990	1.8
30039000	Other medicaments with >=2 constituents, not for retail sale, nes	23,196	1.7
27101950	Cutting oil,grease cutting oils,cleaning oils etc.	21,974	1.6
84314900	Parts of machinery of 84.26, 84.29 and 84.30, nes	20,157	1.5
84138100	Pumps for liquids, nes	18,351	1.4
73089090	Structures and parts of structures, nes, of iron or steel - Other	17,611	1.3
85171200	Telephones for cellular networks or for other wireless networks	16,990	1.3
Other Products		1,047,717	77.8
% of Total September Imports		34.4	
CONGO DR		523,714	100.0
26030000	Copper ores and concentrates	360,924	68.9
26050000	Cobalt ores and concentrates	95,293	18.2
28220010	Cobalt oxides and hydroxides; commercial cobalt oxides in bulk	51,100	9.8
28369910	Other carbonates; peroxocarbonates in bulk	15,584	3.0
99030000	Single consignment non commercial goods	423	0.1
87052000	Mobile drilling derricks	165	0.0
87042110	Diesel Dual purpose vehicles for both persons & goods (twin cab, pickup) upto 5 tonnes	66	0.0
33079000	Other perfumery, cosmetic or toilet preparations, nes	54	0.0
33049900	Beauty, make-up, skin-care (incl. suntan), nes	36	0.0
87112000	Motorcycles with reciprocating engine of capacity 50-250cc	27	0.0
Other Products		43	0.0
% of Total September Imports		13.4	
KUWAIT		326,435	100.0
27090000	Petroleum oils and oils obtained from bituminous minerals, crude	326,435	100.0
Other Products		0	0.0
% of Total September Imports		8.3	
CHINA		243,121	100.0
87059000	Special purpose motor vehicles, nes (eg breakdown lorries, etc)	22,649	9.3
85442000	Co-axial cable and other co-axial electric conductors	14,103	5.8
85176100	Base stations	7,281	3.0
73158100	Stud-link of iron or steel	5,823	2.4
84295900	Self-propelled bulldozers, excavators..., nes	4,929	2.0
84314900	Parts of machinery of 84.26, 84.29 and 84.30, nes	4,434	1.8
73170090	Nails, tacks, drawing pins, corrugated nails... of iron or steel - Other	4,367	1.8
85444900	Electric conductors, nes, for a voltage <=80 V, not fitted with connectors	4,246	1.7
40112000	New pneumatic tyres of rubber, of a kind used on buses or lorries	3,628	1.5
84212100	Machinery and apparatus for filtering/purifying water	3,326	1.4
Other Products		168,335	69.2

Country / Hs-Code	Description	September 2012	
		Value (K' Million)	% Share
% of Total September Imports		6.2	
UNITED ARAB EMIRATE		231,523	100.0
12024200	Groundnuts, shelled, whether or not broken	225,389	97.4
84771000	Injection-moulding machines for working rubber or plastics, etc	1,102	0.5
99030000	Single consignment non commercial goods	878	0.4
39231090	OTHER-Boxes, cases, crates and similar articles of plastics	543	0.2
44129400	Other blockboard, laminboard and batten board	405	0.2
40012900	Other natural rubber, in primary forms or in plates, etc, nes	399	0.2
44129900	Plywood, veneered panels and similar laminated wood nes	288	0.1
39232110	Sacks and bags (incl. cones) of polymers of ethylene	226	0.1
62113200	Men's or boys' garments of cotton, nes	190	0.1
34011190	Other soap and organic surface-active products in bars, etc, for toilet use	187	0.1
Other Products		1,917	0.8
% of Total September Imports		5.9	
Other Destination		1,247,514	31.8
Total Value of September Imports		3,919,158	

Source: CSO, International Trade Statistics, 2012

Note: (\*) Provisional

(R) Revised figures

## Import Market Shares by Regional Groupings, September and August 2012

The Southern African Development Community (SADC) regional grouping was the largest source of Zambia's imports accounting for 56.8 percent in September 2012. Within SADC, South Africa was the major source of Zambia's imports with 60.5 percent. Other notable markets were Congo (DR), Malawi, Zimbabwe and Tanzania.

Asia was the second largest source of Zambia's imports accounting for 25.4 percent in September 2012. Within Asia, Kuwait was the main source of Zambia's imports, accounting for 32.8 percent. Other sources were China, India, Japan and the United Arab Emirates.

The Common Market for Eastern and Southern Africa (COMESA) regional grouping was the third largest source of Zambia's imports accounting for 22.4 percent in September 2012. Within COMESA, Congo DR was the main source of Zambia's imports with 59.5 percent in September 2012. Other notable markets were Malawi, Zimbabwe, Kenya and Egypt.

European Union was the fourth largest source of Zambia's imports, accounting for 11.0 percent. Within this grouping, the United Kingdom was the main source with 27.4 percent. Other notable markets were Netherlands, Germany, Belgium and Ireland.



## Import Market shares by Regional Groupings, September and August 2012 (K' Millions)

GROUPING	September 2012		GROUPING	August 2012	
	Value (K' Million)	% Share		Value (K' Million)	% Share
<b>SADC</b>	2,225,341	100.0	<b>SADC</b>	1,859,782	100.0
South Africa	1,346,852	60.5	South Africa	1,255,048	67.5
Congo (DR)	523,714	23.5	Congo (DR)	456,913	24.6
Malawi	231,523	10.4	Tanzania	50,514	2.7
Zimbabwe	43,974	2.0	Zimbabwe	44,463	2.4
Tanzania	35,164	1.6	Mozambique	10,940	0.6
Other SADC	44,114	2.0	Other SADC	41,904	2.3
<b>% of Total September Imports</b>	<b>56.8</b>		<b>% of Total August Imports</b>	<b>52.9</b>	
<b>ASIA</b>	996,540	100.0	<b>ASIA</b>	1,001,936	100.0
Kuwait	326,435	32.8	Kuwait	323,648	32.3
China	243,121	24.4	China	284,701	28.4
India	131,773	13.2	India	102,697	10.2
Japan	121,259	12.2	Japan	96,289	9.6
United Arab Emirates	82,476	8.3	United Arab Emirates	70,631	7.0
Other ASIA	91,477	9.2	Other ASIA	123,970	12.4
<b>% of Total September Imports</b>	<b>25.4</b>		<b>% of Total August Imports</b>	<b>28.5</b>	
<b>COMESA</b>	879,736	100.0	<b>ASIA</b>	621,805	100.0
Congo (DR)	523,714	59.5	Congo (DR)	456,913	73.5
Malawi	231,523	26.3	Kenya	78,613	12.6
Zimbabwe	43,974	5.0	Zimbabwe	44,463	7.2
Kenya	42,307	4.8	Egypt	19,435	3.1
Egypt	25,080	2.9	Malawi	10,395	1.7
Other COMESA	13,139	1.5	Other ASIA	11,987	1.9
<b>% of Total September Imports</b>	<b>22.4</b>		<b>% of Total August Imports</b>	<b>17.7</b>	
<b>EUROPEAN UNION</b>	430,017	100.0	<b>EUROPEAN UNION</b>	375,225	100.0
United Kingdom	117,715	27.4	United Kingdom	102,830	27.4
Netherlands	70,598	16.4	Germany	80,426	21.4
Germany	51,791	12.0	Belgium	37,453	10.0
Belgium	40,341	9.4	France	33,154	8.8
Ireland	35,111	8.2	Sweden	31,841	8.5
Other EU	114,461	26.6	Other EU	89,521	23.9
<b>% of Total September Imports</b>	<b>11.0</b>		<b>% of Total August Imports</b>	<b>10.7</b>	
<b>Total Value of September Imports</b>	<b>3,919,158</b>		<b>Total Value of August Imports</b>	<b>3,516,886</b>	

Source: CSO, International Trade Statistics, 2012

Note: (\*) Provisional  
(R) Revised figures

## ***Surveys/Activities Being undertaken***

- ☞ Finalisation of the 2010 Census of Population and Housing National Analytical Report and the Production of the National Descriptive Tables
- ☞ 2011/2012 Zambia Economic Census Data Processing
- ☞ Sample Vital Registration with Verbal Autopsy (SAVVY) Phase II National Report Writing
- ☞ 2012 Labour Force Survey Data Collection
- ☞ Post Harvest and Livestock Survey Training of Field Staff
- ☞ Training of Cartography staff for the 2012/2013 Zambia Demographic and Health Survey (ZDHS) Household Listing and Data Collection

## ***Available Reports***

- ☞ 2011/2012 Crop Forecasting Survey (Electronic Copy)
- ☞ 2008 Labour-Force Survey Report (Electronic and Print copy)
- ☞ 2007 Zambia Demographic and Health Survey (ZDHS) (Electronic and Print copy)
- ☞ 2010 Census of population and Housing Final Report (Electronic and Print copy)
- ☞ 2006/2010 Living Conditions Monitoring Survey Report (Electronic and Print copy)

# SELECTED SOCIO-ECONOMIC INDICATORS

## POPULATION 2000 to 2010

	2000	2001	2002	2003	2004	2005	2006	2007	2008	2009	2010
Total Population	9,885,591	10,089,492	10,409,441	10,744,380	11,089,691	11,441,461	11,798,678	12,160,516	12,525,791	12,896,830	13,092,666
Population Growth Rate	2.5	3.1	3.1	3.1	3.1	3.1	3	3	2.9	2.9	2.8
Life Expectancy at Birth	50	51.8	51.9	52.4	52.4	52.6	51.9	51.4	51.3	51.2	-
POPULATION BY PROVINCE											
Central	1,012,257	1,032,574	1,066,992	1,103,387	1,141,256	1,180,124	1,219,980	1,260,491	1,301,776	1,343,835	1,307,111
Copperbelt	1,581,221	1,611,569	1,662,155	1,714,225	1,767,165	1,820,443	1,874,081	1,927,576	1,980,824	2,034,012	1,972,317
Eastern**	1,231,283	1,348,070	1,391,690	1,436,120	1,482,290	1,530,118	1,579,960	1,631,890	1,684,910	1,740,180	1,592,661
Luapula	775,353	791,067	817,326	845,076	873,969	903,746	934,317	965,605	997,579	1,030,572	991,927
Lusaka	1,391,329	1,413,010	1,453,690	1,495,730	1,538,000	1,579,769	1,620,730	1,660,070	1,697,730	1,733,830	2,191,225
Muchinga*	524,186	-	-	-	-	-	-	-	-	-	711,657
Northern**	809,400	1,277,250	1,315,650	1,357,540	1,401,340	1,445,730	1,490,330	1,534,170	1,577,310	1,619,980	1,105,824
North-western	583,350	596,010	616,496	638,004	660,322	683,367	707,074	731,351	756,261	781,800	727,044
Southern	1,212,124	1,235,134	1,275,470	1,318,161	1,362,382	1,407,433	1,453,324	1,499,462	1,545,880	1,592,864	1,589,926
Western	765,088	774,929	795,247	816,983	839,757	863,294	887,540	912,226	937,419	963,107	902,974

**Source:** CSO, Population Projections Report

**Note:** 2000 figures are from the 2000 Census of Population and Housing while the 2001 to 2009 figures are Population Projections from the Projections Report. The 2010 figures are final 2010 Census of Population and Housing figures.

\*Muchinga was created in 2011

\*\*2000 Census figures were adjusted following the new provincial demarcations

**PERCENTAGE CHANGES IN G.D.P. BY KIND OF ECONOMIC ACTIVITY - CONSTANT 1994 PRICES**

KIND OF ECONOMIC ACTIVITY	2000	2001	2002	2003	2004	2005	2006	2007	2008	2009	2010	2011*
<b>Agriculture, Forestry and Fishing</b>	1.6	-2.6	-1.7	5.0	4.3	-0.6	2.2	0.4	2.6	7.2	6.6	7.7
Agriculture	1.0	-6.0	-6.3	8.0	6.1	-4.0	3.0	-2.7	1.9	12.4	13.6	13.3
Forestry	4.0	4.3	4.3	4.3	4.3	3.6	1.4	3.7	3.7	3.7	3.7	3.7
Fishing	-1.0	-5.0	-0.7	-0.7	-0.7	0.5	1.8	1.8	1.8	1.8	-7.0	-2.0
<b>Mining and Quarrying</b>	0.1	14.0	16.4	3.4	13.9	7.9	7.3	3.6	2.5	20.3	15.2	-5.2
Metal Mining	-0.3	15.0	17.1	3.3	13.5	7.1	9.0	4.4	2.5	19.7	16.0	-5.3
Other mining and quarrying	13.3	-15.0	-13.0	10.7	35.8	42.9	-45.8	-45.5	-3.5	99.6	-48.8	8.1
<b>PRIMARY SECTOR</b>	1.1	1.9	3.8	4.5	7.5	2.5	4.1	1.7	2.5	12.4	10.2	2.0
<b>Manufacturing</b>	3.6	4.2	5.7	7.6	4.7	2.9	5.7	3.0	1.8	2.2	4.2	8.0
Food, Beverages and Tobacco	0.6	5.3	5.4	8.6	5.8	3.6	8.9	7.6	3.0	4.9	7.4	9.3
Textile, and leather industries	2.2	2.3	6.2	3.2	-1.9	-2.9	-1.3	-19.5	-23.6	-20.0	-56.8	-54.7
Wood and wood products	-0.3	5.7	7.5	11.4	4.2	3.6	0.7	3.7	12.1	2.6	13.4	6.1
Paper and Paper products	-1.3	3.8	2.2	8.2	2.5	10.6	0.3	0.7	29.3	6.2	22.7	18.5
Chemicals, rubber and plastic products	41.2	4.3	10.0	4.9	8.5	3.2	4.6	4.2	5.2	-0.3	2.7	7.2
Non-metallic mineral products	4.5	3.5	1.7	14.9	14.4	7.4	-5.2	2.3	5.0	11.7	13.0	25.0
Basic metal products	4.3	-18.0	4.3	15.1	3.1	-2.0	1.9	-4.8	23.0	-4.8	-2.0	-0.9
Fabricated metal products	11.3	-8.0	-4.0	5.3	4.8	7.4	5.0	7.8	-2.5	-3.4	12.8	16.6
<b>Electricity, Gas and Water</b>	1.2	12.6	-5.2	0.4	-1.7	5.4	10.5	1.0	-1.2	6.8	7.4	8.2
<b>Construction</b>	6.5	11.5	17.4	21.6	20.5	21.2	14.4	20.0	8.7	9.5	8.1	8.9
<b>SECONDARY SECTOR</b>	4.0	7.5	7.2	10.8	9.1	10.0	9.8	10.0	4.7	6.2	6.5	8.5
<b>Wholesale and Retail Trade</b>	2.3	5.4	5.0	6.1	5.0	2.4	2.0	2.4	2.7	2.3	4.2	7.4
<b>Restaurants, Bars and Hotels</b>	12.3	24.4	4.9	6.9	6.4	11.7	16.1	9.6	5.0	-13.4	10.2	7.9
<b>Transport, Storage and Communications</b>	2.4	2.8	1.8	4.8	6.4	11.0	22.1	19.2	15.8	7.6	14.9	13.7
Rail Transport	3.6	7.6	6.0	-8.1	-1.8	-11.6	-2.6	-18.7	-20.2	-23.8	13.1	4.4
Road Transport	1.9	0.5	1.9	3.9	4.2	6.3	6.4	6.4	13.2	13.3	6.3	10.8
Air Transport	6.3	10.6	-8.4	3.9	18.1	10.8	33.5	24.1	13.7	-23.4	19.1	13.1
Communications	0.6	0.6	7.9	10.0	5.0	23.2	40.5	33.6	21.1	19.4	20.0	16.0
<b>Financial Institutions and Insurance</b>	-0.6	0.1	3.5	3.5	3.5	3.3	4.0	4.1	8.7	5.2	6.0	4.9
<b>Real Estate and Business services</b>	17.0	3.5	4.4	4.0	4.0	3.2	3.2	3.1	3.0	2.8	3.0	2.9
<b>Community, Social and Personal Services</b>	-0.5	5.8	1.6	1.6	0.6	11.4	9.0	12.5	11.7	8.6	5.3	8.4
Public Administration & Defence/Public sanitary services	-0.7	1.0	-1.0	0.2	0.2	6.2	-8.7	14.8	2.2	0.4	-3.1	10.6
Education	-0.7	13.5	7.0	3.0	0.3	22.2	35.3	13.6	19.6	15.2	11.8	7.5
Health	-0.7	16.5	1.0	2.5	-0.8	-2.2	5.2	1.0	18.3	7.7	7.2	13.3
Recreation, Religious,Culture	-0.7	10.0	-2.0	4.5	4.3	34.1	22.8	9.3	26.7	17.7	5.0	2.8
Personal Services	3.5	3.5	3.5	3.5	3.5	3.5	3.5	3.5	3.5	3.5	3.5	3.5
<b>TERTIARY SECTOR</b>	4.1	4.7	3.8	4.5	4.2	5.4	6.7	7.1	7.2	3.9	6.6	7.8
<b>Less: FISIM</b>	2.5	2.5	2.5	2.5	2.5	2.5	2.5	2.5	2.5	3.3	2.3	2.3
<b>TOTAL GROSS VALUE ADDED</b>	3.4	4.6	4.6	6.0	6.2	5.8	7.0	6.7	5.7	6.4	7.6	6.8
<b>Taxes less subsidies on Products</b>	4.6	7.0	-6.7	-2.7	-2.7	-0.1	-3.1	-0.3	5.7	6.4	7.6	6.8
<b>TOTAL G.D.P. AT MARKET PRICES</b>	3.5	4.9	3.3	5.1	5.4	5.3	6.2	6.2	5.7	6.4	7.6	6.8

Source: CSO; National Accounts Statistics

\* Final Estimates

**GDP BY KIND OF ECONOMIC ACTIVITY AT CURRENT PRICES (K' BILLION)**

KIND OF ECONOMIC ACTIVITY	2000	2001	2002	2003	2004	2005	2006	2007	2008	2009	2010	2011*
<b>Agriculture, Forestry and Fishing</b>	<b>2,002.2</b>	<b>2,582.0</b>	<b>3,247.4</b>	<b>4,244.6</b>	<b>5,568.2</b>	<b>6,723.6</b>	<b>7,800.2</b>	<b>9,139.5</b>	<b>10,863.8</b>	<b>13,461.4</b>	<b>15,642.3</b>	<b>18,072.4</b>
Agriculture	561.1	627.3	749.8	1,008.2	1,249.5	1,421.7	1,537.0	1,575.1	1,826.4	2,344.3	2,801.4	3,329.4
Forestry	1,285.0	1,778.5	2,274.3	2,960.3	3,998.5	4,920.3	5,855.7	7,127.7	8,531.6	10,528.8	12,265.5	14,151.6
Fishing	156.1	176.3	223.3	276.1	320.2	381.6	407.5	436.7	505.8	588.2	575.3	591.5
<b>Mining and Quarrying</b>	<b>416.1</b>	<b>518.9</b>	<b>575.1</b>	<b>564.8</b>	<b>809.6</b>	<b>1,030.9</b>	<b>1,612.5</b>	<b>2,037.2</b>	<b>1,998.9</b>	<b>1,682.1</b>	<b>2,837.8</b>	<b>3,346.4</b>
Metal Mining	407.9	511.3	568.8	558.2	798.3	1,011.7	1,597.5	2,027.2	1,989.8	1,669.3	2,828.1	3,333.4
Other Mining and Quarrying	8.2	7.6	6.3	6.6	11.3	19.1	15.0	9.9	9.2	12.9	9.6	12.9
<b>PRIMARY SECTOR</b>	<b>2,418.4</b>	<b>3,101.0</b>	<b>3,822.5</b>	<b>4,809.4</b>	<b>6,377.7</b>	<b>7,754.5</b>	<b>9,412.8</b>	<b>11,176.7</b>	<b>12,862.7</b>	<b>15,143.5</b>	<b>18,480.0</b>	<b>21,418.8</b>
<b>Manufacturing</b>	<b>1,024.6</b>	<b>1,293.1</b>	<b>1,693.6</b>	<b>2,241.0</b>	<b>2,827.7</b>	<b>3,430.2</b>	<b>4,015.7</b>	<b>4,487.4</b>	<b>5,149.6</b>	<b>6,016.9</b>	<b>6,770.8</b>	<b>7,797.5</b>
Food, Beverages and Tobacco	613.9	768.4	1,033.4	1,397.2	1,726.6	2,121.0	2,423.5	2,745.1	3,218.4	3,859.0	4,358.0	4,996.3
Textile, and Leather Industries	180.4	224.2	284.5	352.9	450.7	500.4	630.8	611.4	506.7	445.2	214.5	106.7
Wood and Wood Products	64.1	89.9	118.4	164.7	222.2	273.4	323.2	393.5	509.2	621.6	791.9	934.7
Paper and Paper products	40.0	55.1	69.0	93.1	123.6	162.4	191.3	226.1	337.3	426.4	587.7	774.6
Chemicals, rubber and plastic products	85.8	111.3	142.6	178.9	231.7	281.2	331.2	372.4	432.6	519.1	613.2	703.2
Non-metallic mineral products	14.3	18.5	21.9	30.0	41.0	51.8	55.3	61.1	70.8	95.1	123.7	165.3
Basic metal products	3.2	2.9	2.8	3.1	4.0	4.7	6.9	8.0	9.4	6.2	8.9	11.0
Fabricated metal products	22.9	23.0	21.0	21.0	27.7	35.2	53.6	69.9	65.2	44.2	72.8	105.6
<b>Electricity, Gas and Water</b>	<b>328.0</b>	<b>445.3</b>	<b>488.3</b>	<b>595.1</b>	<b>694.7</b>	<b>922.7</b>	<b>1,165.9</b>	<b>1,345.0</b>	<b>1,512.4</b>	<b>1,779.8</b>	<b>2,201.8</b>	<b>2,910.4</b>
<b>Construction</b>	<b>500.5</b>	<b>728.6</b>	<b>1,067.7</b>	<b>1,590.0</b>	<b>2,321.5</b>	<b>3,216.4</b>	<b>4,703.7</b>	<b>6,692.7</b>	<b>8,811.4</b>	<b>11,819.5</b>	<b>15,703.6</b>	<b>20,815.0</b>
<b>SECONDARY SECTOR</b>	<b>1,853.1</b>	<b>2,466.9</b>	<b>3,249.6</b>	<b>4,426.1</b>	<b>5,843.9</b>	<b>7,569.2</b>	<b>9,885.3</b>	<b>12,525.1</b>	<b>15,473.4</b>	<b>19,616.2</b>	<b>24,676.1</b>	<b>31,522.8</b>
<b>Wholesale and Retail trade</b>	<b>1,879.8</b>	<b>2,340.5</b>	<b>3,004.1</b>	<b>3,873.8</b>	<b>4,843.7</b>	<b>5,868.9</b>	<b>6,524.7</b>	<b>7,395.5</b>	<b>8,539.1</b>	<b>9,908.2</b>	<b>11,204.2</b>	<b>13,074.3</b>
<b>Restaurants, Bars and Hotels</b>	<b>207.0</b>	<b>315.9</b>	<b>406.8</b>	<b>527.7</b>	<b>670.9</b>	<b>894.0</b>	<b>1,120.1</b>	<b>1,354.2</b>	<b>1,610.8</b>	<b>1,545.2</b>	<b>1,838.6</b>	<b>2,143.8</b>
<b>Transport, Storage and Communications</b>	<b>635.7</b>	<b>852.6</b>	<b>1,055.9</b>	<b>1,058.2</b>	<b>1,252.3</b>	<b>1,395.6</b>	<b>1,629.2</b>	<b>1,984.4</b>	<b>2,248.9</b>	<b>2,355.2</b>	<b>3,076.5</b>	<b>3,578.4</b>
Rail Transport	54.9	72.7	82.7	89.5	100.8	93.8	94.7	91.9	79.0	66.2	105.9	122.6
Road Transport	255.2	311.3	334.3	393.9	464.0	543.0	640.4	755.7	891.8	1,052.6	1,242.6	1,467.9
Air Transport	99.0	133.7	129.7	152.7	203.0	243.8	356.0	488.6	573.4	453.6	611.0	737.2
Communications	226.6	334.9	509.1	422.1	484.6	515.0	538.2	648.3	704.8	782.7	1,117.0	1,250.6
<b>Financial Intermediaries and Insurance</b>	<b>982.2</b>	<b>1,238.8</b>	<b>1,493.1</b>	<b>1,847.7</b>	<b>2,282.7</b>	<b>2,771.5</b>	<b>3,246.9</b>	<b>3,647.2</b>	<b>4,373.6</b>	<b>5,534.6</b>	<b>6,745.1</b>	<b>7,568.8</b>
<b>Real Estate and Business services</b>	<b>660.6</b>	<b>832.8</b>	<b>1,041.2</b>	<b>1,341.2</b>	<b>1,691.8</b>	<b>1,979.4</b>	<b>2,296.4</b>	<b>2,678.2</b>	<b>3,138.4</b>	<b>3,671.6</b>	<b>4,306.1</b>	<b>5,327.2</b>
<b>Community, Social and Personal Services</b>	<b>951.3</b>	<b>1,297.1</b>	<b>1,478.4</b>	<b>1,828.9</b>	<b>2,122.8</b>	<b>2,806.9</b>	<b>3,462.2</b>	<b>4,324.1</b>	<b>5,465.5</b>	<b>6,649.0</b>	<b>8,148.6</b>	<b>9,695.8</b>
Public Administration and Defence	500.1	610.2	646.8	752.2	797.3	1,002.2	983.0	1,258.3	1,446.1	1,647.3	1,732.7	2,082.4
Education	256.1	394.3	496.9	688.6	867.7	1,254.2	1,842.6	2,335.3	3,092.8	3,890.8	4,694.2	5,542.0
Health	107.0	175.5	203.6	252.4	292.8	338.8	389.9	445.2	576.9	690.9	1,246.2	1,522.9
Recreation, Religious, Culture	36.4	52.7	48.5	29.1	31.7	50.3	67.1	81.8	114.7	147.4	167.1	188.6
Personal services	51.7	64.4	82.7	106.6	133.3	161.5	179.6	203.5	235.0	272.7	308.3	359.8
<b>TERTIARY SECTOR</b>	<b>5,316.6</b>	<b>6,877.8</b>	<b>8,479.5</b>	<b>10,477.5</b>	<b>12,864.2</b>	<b>15,716.4</b>	<b>18,279.4</b>	<b>21,383.6</b>	<b>25,376.4</b>	<b>29,663.9</b>	<b>35,319.1</b>	<b>41,388.3</b>
<b>Less: FISIM</b>	<b>-564.4</b>	<b>-711.9</b>	<b>-858.1</b>	<b>-1,061.8</b>	<b>-1,311.8</b>	<b>-1,592.8</b>	<b>-1,865.9</b>	<b>-2,096.0</b>	<b>-2,513.4</b>	<b>-2,922.4</b>	<b>-3,876.3</b>	<b>-4,349.6</b>
<b>TOTAL GROSS VALUE ADDED</b>	<b>9,023.6</b>	<b>11,733.7</b>	<b>14,693.6</b>	<b>18,651.2</b>	<b>23,774.0</b>	<b>29,447.4</b>	<b>35,711.6</b>	<b>42,989.4</b>	<b>51,199.1</b>	<b>61,501.2</b>	<b>74,599.0</b>	<b>89,980.3</b>
<b>Taxes less subsidies on Products</b>	<b>1,097.7</b>	<b>1,460.0</b>	<b>1,630.8</b>	<b>1,899.9</b>	<b>2,219.1</b>	<b>2,594.2</b>	<b>2,849.2</b>	<b>3,205.4</b>	<b>3,640.4</b>	<b>3,114.3</b>	<b>3,067.6</b>	<b>3,527.5</b>
<b>TOTAL G.D.P. AT MARKET PRICES</b>	<b>10,121.3</b>	<b>13,193.7</b>	<b>16,324.4</b>	<b>20,551.1</b>	<b>25,993.1</b>	<b>32,041.5</b>	<b>38,560.8</b>	<b>46,194.8</b>	<b>54,839.4</b>	<b>64,615.6</b>	<b>77,666.6</b>	<b>93,507.7</b>

Source: CSO; National Accounts Statistics

\* Final Estimates

## ALL ITEMS CONSUMER PRICE INDEX (CPI) AND ANNUAL INFLATION RATES

Consumer Price Index (2009 = 100)																
		All Items	Food & Non- alcoholic beverages	Alcoholic beverages & Tobacco	Clothing & footwear	Housing, Water, Electricity, Gas & Other fuels	Furnishings, Household Equip., Routine Hse Mtc	Health	Transport	Communication	Recreation & Culture	Education	Restaurant & Hotel	Miscellaneous Goods & Services	Inflation Rate (%) Monthly	Inflation Rate (%) Annual
Weight		1 000.00	534.85	15.21	80.78	114.11	82.36	8.15	58.08	12.94	13.84	26.62	3.37	49.69	0.7	6.3
2011	January	111.61	108.85	106.60	111.87	126.48	111.21	112.63	111.78	102.64	109.21	111.60	112.10	111.53		
	February	112.36	109.37	107.29	113.49	128.59	111.40	114.40	112.43	102.66	109.58	112.12	112.15	111.62		
	March	113.56	110.50	107.05	115.33	129.95	112.03	114.96	114.86	102.80	109.85	114.20	115.35	112.21		
	April	114.24	111.11	108.95	118.31	129.76	111.94	116.98	116.07	102.89	110.46	114.15	115.79	112.40		
	May	114.56	110.97	108.33	119.16	130.95	113.37	117.78	117.03	102.87	113.12	113.23	116.37	112.46		
	June	114.52	110.31	108.49	119.96	131.68	114.42	118.29	117.06	102.91	112.67	115.03	118.32	113.09		
	July	115.89	111.93	108.52	120.70	132.16	116.40	118.40	119.38	102.89	114.12	116.22	115.46	114.02		
	August	116.60	112.09	108.32	122.38	134.66	117.00	119.03	121.49	102.90	115.67	115.81	117.33	114.13		
	September	117.01	112.48	108.09	121.39	135.65	119.01	119.87	121.66	102.64	115.44	116.87	116.62	113.67		
	October	116.80	112.21	109.74	121.18	134.22	119.98	118.32	121.19	102.65	116.27	117.10	116.59	114.31		
	November	116.94	112.71	109.33	121.08	133.87	119.61	120.33	119.16	102.79	117.52	118.15	118.61	114.36		
	December	117.47	113.39	109.15	121.69	134.61	118.56	120.12	120.78	102.71	116.84	118.36	116.97	115.29		
2012	January	118.77	115.48	109.11	122.24	134.20	119.04	121.79	121.27	103.76	117.93	121.18	117.96	115.01	1.1	6.4
	February	119.09	115.41	110.41	122.74	134.71	119.96	122.84	122.46	104.05	118.03	122.87	117.95	115.86	0.3	6.0
	March	120.84	117.59	110.77	124.43	136.32	120.67	123.52	123.83	104.05	118.70	123.27	118.86	117.53	1.5	6.4
	April	121.63	118.22	111.61	125.91	137.21	121.89	124.26	124.47	104.12	119.31	123.56	119.57	118.67	0.7	6.5
	May	122.11	118.56	111.92	126.32	137.95	123.06	124.42	124.74	104.02	121.15	123.79	120.13	119.50	0.4	6.6
	June	122.16	118.11	112.38	126.48	138.81	123.47	123.63	125.64	103.92	121.77	124.75	120.77	120.58	0.0	6.7
	July	123.06	119.00	114.16	127.43	139.17	124.38	124.80	126.47	104.61	122.33	127.37	120.77	121.79	0.7	6.2
	August	124.11	120.30	113.72	128.49	140.68	125.98	126.38	125.63	104.63	121.71	127.14	120.44	122.37	0.9	6.4
	September	124.72	120.95	114.42	128.31	140.42	126.50	128.16	129.02	104.86	122.02	127.92	121.55	122.41	0.5	6.6
	October	124.80	121.40	113.85	126.42	140.75	127.28	127.17	127.09	104.99	121.01	127.93	121.95	122.97	0.1	6.8

Source: CSO, Prices Statistics, 2012

## Consumer Index Numbers of Consumer Prices - Food and Non-Food (National) 2009 = 100

Period	Month	Total	Food CPI	Non-Food CPI
Weight		1000.0	534.9	465.2
2010	January	105.01	104.43	105.67
	February	105.47	104.87	106.15
	March	106.55	106.13	107.03
	April	107.48	107.11	107.90
	May	107.74	107.23	108.34
	June	107.93	106.26	109.85
	July	108.45	106.57	110.62
	August	109.45	105.97	113.44
	September	109.72	106.05	113.93
	October	109.44	105.60	113.86
	November	109.92	106.36	114.02
	December	110.86	107.65	114.56
	December	110.86	107.65	114.56
2011	January	111.61	108.85	114.78
	February	112.36	109.37	115.80
	March	113.56	110.50	117.09
	April	114.24	111.11	117.83
	May	114.56	110.97	118.67
	June	114.52	110.31	119.37
	July	115.89	111.93	120.45
	August	116.60	112.09	121.78
	September	117.01	112.48	122.22
	October	116.80	112.21	122.08
	November	116.94	112.71	121.80
	December	117.47	113.39	122.17
	December	117.47	113.39	122.17
2012	January	118.77	115.48	122.54
	February	119.09	115.41	123.33
	March	120.84	117.59	124.56
	April	121.63	118.22	125.54
	May	122.11	118.56	126.20
	June	122.16	118.11	126.82
	July	123.06	119.00	127.73
	August	124.11	120.30	128.50
	September	124.72	120.95	129.05
	October	124.80	121.40	128.70

Source: CSO, Prices Statistics, 2012

## Consumer Price Indices (2009=100)

Year	Month	Annual CPI	Average Annual Inflation Rate
1965		0.002	
1966		0.002	0.0
1967		0.002	0.0
1968		0.002	0.0
1969		0.002	0.0
1970		0.002	0.0
1971		0.002	33.3
1972		0.002	0.0
1973		0.002	0.0
1974		0.002	0.0
1975		0.003	25.0
1976		0.003	20.0
1977		0.004	16.7
1978		0.004	14.3
1979		0.005	12.5
1980		0.005	11.1
1981		0.006	10.0
1982		0.006	9.1
1983		0.008	25.0
1984		0.010	20.0
1985		0.015	50.0

Year	Month	Monthly CPI	Annual Inflation Rate
1986	January	0.02	58.6
1986	February	0.02	58.5
1986	March	0.02	60.5
1986	April	0.02	59.0
1986	May	0.02	59.8
1986	June	0.02	61.3
1986	July	0.02	59.2
1986	August	0.02	62.8
1986	September	0.02	58.5
1986	October	0.02	48.9
1986	November	0.02	42.1
1986	December	0.03	41.6
1987	January	0.03	43.3
1987	February	0.03	40.7
1987	March	0.03	36.6
1987	April	0.03	48.0
1987	May	0.03	45.2
1987	June	0.03	46.3
1987	July	0.03	46.8
1987	August	0.03	46.5
1987	September	0.04	53.6
1987	October	0.04	54.0
1987	November	0.04	55.9
1987	December	0.04	50.0
1988	January	0.04	50.4
1988	February	0.04	55.1
1988	March	0.05	59.7
1988	April	0.05	48.1
1988	May	0.05	49.8
1988	June	0.05	49.4
1988	July	0.05	53.0
1988	August	0.05	50.0
1988	September	0.05	46.5
1988	October	0.05	45.3
1988	November	0.06	47.2
1988	December	0.06	58.5
1989	January	0.07	62.5
1989	February	0.07	65.8
1989	March	0.08	72.0
1989	April	0.08	79.3
1989	May	0.09	85.1
1989	June	0.10	93.7
1989	July	0.12	138.2
1989	August	0.14	161.8
1989	September	0.14	170.1
1989	October	0.15	176.4
1989	November	0.16	171.5



Year	Month	Monthly CPI	Annual Inflation Rate
1989	December	0.16	153.2
1990	January	0.17	143.8
1990	February	0.18	140.7
1990	March	0.19	135.2
1990	April	0.20	134.1
1990	May	0.21	135.5
1990	June	0.21	123.3
1990	July	0.24	92.8
1990	August	0.25	80.1
1990	September	0.26	77.2
1990	October	0.27	78.9
1990	November	0.32	106.0
1990	December	0.34	110.6
1991	January	0.36	112.8
1991	February	0.38	113.3
1991	March	0.39	109.4
1991	April	0.40	104.9
1991	May	0.42	101.0
1991	June	0.44	105.3
1991	July	0.45	90.3
1991	August	0.47	90.1
1991	September	0.49	90.4
1991	October	0.53	94.2
1991	November	0.58	80.7
1991	December	0.68	99.7
1992	January	0.76	111.0
1992	February	0.86	126.5
1992	March	0.97	148.0
1992	April	1.02	151.7
1992	May	1.09	159.3
1992	June	1.15	162.5
1992	July	1.19	163.8
1992	August	1.28	173.2
1992	September	1.43	192.8
1992	October	1.54	192.3
1992	November	1.65	185.2
1992	December	1.90	180.7
1993	January	2.08	174.4
1993	February	2.31	168.8
1993	March	2.59	168.5
1993	April	2.90	184.5
1993	May	3.19	193.6
1993	June	3.67	218.4
1993	July	4.03	237.8
1993	August	4.13	222.7
1993	September	4.33	203.0
1993	October	4.32	180.5
1993	November	4.14	150.4
1993	December	4.33	128.1
1994	January	4.55	118.6
1994	February	4.95	114.0
1994	March	5.14	98.3
1994	April	5.27	82.2
1994	May	5.39	69.1
1994	June	5.47	49.1
1994	July	5.55	37.7
1994	August	5.62	35.9
1994	September	5.60	29.3
1994	October	5.66	31.3
1994	November	5.75	39.0
1994	December	5.99	38.3
1995	January	6.36	39.6
1995	February	6.64	34.1
1995	March	6.82	32.7
1995	April	6.85	30.0
1995	May	6.77	25.6
1995	June	6.95	27.0
1995	July	7.13	28.6
1995	August	7.23	28.7
1995	September	7.52	34.2
1995	October	8.13	43.5
1995	November	8.50	47.7
1995	December	8.75	46.0
1996	January	9.07	42.8

Year	Month	Monthly CPI	Annual Inflation Rate
1996	February	9.46	42.6
1996	March	9.74	42.7
1996	April	10.04	46.5
1996	May	10.20	50.7
1996	June	10.42	50.0
1996	July	10.49	47.1
1996	August	10.79	49.3
1996	September	10.95	45.6
1996	October	11.05	35.9
1996	November	11.34	33.5
1996	December	11.83	35.2
1997	January	12.12	33.6
1997	February	12.75	34.7
1997	March	12.86	32.0
1997	April	12.72	26.7
1997	May	12.59	23.5
1997	June	12.82	23.1
1997	July	12.88	22.7
1997	August	12.98	20.3
1997	September	13.13	19.9
1997	October	13.39	21.2
1997	November	13.75	21.2
1997	December	14.02	18.6
1998	January	14.41	18.9
1998	February	14.82	16.3
1998	March	15.27	18.8
1998	April	15.62	22.8
1998	May	15.82	25.7
1998	June	16.00	24.8
1998	July	16.26	26.3
1998	August	16.50	27.1
1998	September	16.74	27.5
1998	October	17.09	27.6
1998	November	17.33	26.1
1998	December	18.31	30.6
1999	January	18.96	31.6
1999	February	19.34	30.5
1999	March	19.62	28.5
1999	April	19.77	26.6
1999	May	20.02	26.6
1999	June	20.39	27.5
1999	July	20.88	28.4
1999	August	20.99	27.2
1999	September	21.05	25.8
1999	October	21.35	25.0
1999	November	21.72	25.3
1999	December	22.09	20.6
2000	January	22.88	20.7
2000	February	23.78	23.0
2000	March	24.31	23.9
2000	April	24.94	26.2
2000	May	25.07	25.2
2000	June	25.24	23.8
2000	July	26.29	25.9
2000	August	26.65	27.0
2000	September	27.45	30.4
2000	October	28.00	31.2
2000	November	26.89	23.8
2000	December	28.74	30.1
2001	January	29.74	30.0
2001	February	30.71	29.1
2001	March	31.31	28.8
2001	April	31.12	24.8
2001	May	30.64	22.2
2001	June	30.35	20.2
2001	July	30.80	17.1
2001	August	31.14	16.8
2001	September	31.58	15.0
2001	October	32.16	14.8
2001	November	32.97	22.6
2001	December	34.12	18.7
2002	January	35.58	19.6
2002	February	36.61	19.2
2002	March	36.97	18.1

Year	Month	Monthly CPI	Annual Inflation Rate
2002	April	36.66	17.8
2002	May	37.05	20.9
2002	June	37.51	23.6
2002	July	38.01	23.4
2002	August	38.52	23.7
2002	September	39.11	23.8
2002	October	39.82	23.8
2002	November	41.32	25.3
2002	December	43.21	26.7
2003	January	44.21	24.3
2003	February	44.98	22.9
2003	March	45.31	22.6
2003	April	45.41	23.9
2003	May	45.83	23.7
2003	June	45.73	21.9
2003	July	45.68	20.2
2003	August	46.34	20.3
2003	September	47.36	21.1
2003	October	48.22	21.1
2003	November	49.20	19.1
2003	December	50.62	17.2
2004	January	51.93	17.4
2004	February	52.52	16.8
2004	March	53.30	17.6
2004	April	53.47	17.8
2004	May	53.82	17.4
2004	June	54.24	18.6
2004	July	54.57	19.5
2004	August	55.10	18.9
2004	September	55.77	17.8
2004	October	56.91	18.0
2004	November	58.20	18.3
2004	December	59.48	17.5
2005	January	61.39	18.2
2005	February	62.33	18.7
2005	March	62.57	17.4
2005	April	63.41	18.6
2005	May	64.12	19.1
2005	June	64.67	19.2
2005	July	64.77	18.7
2005	August	65.73	19.3
2005	September	66.64	19.5
2005	October	67.34	18.3
2005	November	68.23	17.2
2005	December	68.91	15.9
2006	January	68.86	12.2
2006	February	68.74	10.3
2006	March	69.26	10.7
2006	April	69.37	9.4
2006	May	69.65	8.6
2006	June	70.19	8.5
2006	July	70.37	8.7
2006	August	70.96	8.0
2006	September	72.13	8.2
2006	October	72.63	7.9
2006	November	73.73	8.1
2006	December	74.59	8.2
2007	January	75.64	9.8
2007	February	77.40	12.6
2007	March	78.04	12.7
2007	April	77.99	12.4
2007	May	77.83	11.8
2007	June	77.99	11.1
2007	July	78.25	11.2
2007	August	78.53	10.7
2007	September	78.87	9.3
2007	October	79.13	9.0
2007	November	80.17	8.7
2007	December	81.25	8.9
2008	January	82.70	9.3
2008	February	84.78	9.5
2008	March	85.66	9.8
2008	April	85.91	10.1
2008	May	86.28	10.9

Year	Month	Monthly CPI	Annual Inflation Rate
2008	June	87.43	12.1
2008	July	88.15	12.6
2008	August	88.93	13.2
2008	September	90.08	14.2
2008	October	91.15	15.2
2008	November	92.46	15.3
2008	December	94.71	16.6
2009	January	95.96	16.0
2009	February	96.61	14.0
2009	March	96.88	13.1
2009	April	98.17	14.3
2009	May	98.94	14.7
2009	June	100.02	14.4
2009	July	100.48	14.0
2009	August	101.62	14.3
2009	September	101.75	13.0
2009	October	102.34	12.3
2009	November	103.11	11.5
2009	December	104.11	9.9
2010	January	105.01	9.4
2010	February	105.47	9.2
2010	March	106.55	10.0
2010	April	107.48	9.5
2010	May	107.74	8.9
2010	June	107.93	7.9
2010	July	108.45	7.9
2010	August	109.45	7.7
2010	September	109.72	7.8
2010	October	109.44	6.9
2010	November	109.92	6.6
2010	December	110.86	6.5
2011	January	111.61	6.3
2011	February	112.36	6.5
2011	March	113.56	6.6
2011	April	114.24	6.3
2011	May	114.56	6.3
2011	June	114.52	6.1
2011	July	115.89	6.9
2011	August	116.60	6.5
2011	September	117.01	6.6
2011	October	116.80	6.7
2011	November	116.94	6.4
2011	December	117.47	6.0
2012	January	118.77	6.4
2012	February	119.09	6.0
2012	March	120.84	6.4
2012	April	121.63	6.5
2012	May	122.11	6.6
2012	June	122.16	6.7
2012	July	123.06	6.2
2012	August	124.11	6.4
2012	September	124.72	6.6
2012	October	124.80	6.8

**Note:** Inflation rates are computed using unrounded consumer price indices

### Zambia's Trade Flows in absolute Zambian Kwacha (2000 to 2011)

Flow Year	Imports(cif)	Domestic Exports(fob)	Re-Exports(fob)	Total Exports(fob)	Trade Balance
2000	2,751,563,199,592	2,680,166,733,376	36,390,914,760	2,716,557,648,136	-35,005,551,456
2001	3,900,496,869,495	3,523,388,830,726	13,818,082,693	3,537,206,913,419	-363,289,956,076
2002	4,734,304,934,590	4,046,573,003,139	24,035,820,066	4,070,608,823,205	-663,696,111,385
2003	7,444,669,756,553	4,614,154,833,843	27,918,721,735	4,642,073,555,578	-2,802,596,200,975
2004	10,325,503,347,652	7,486,745,995,064	59,170,839,070	7,545,916,834,134	-2,779,586,513,518
2005	11,444,687,982,620	9,556,350,699,041	55,238,218,023	9,611,588,917,064	-1,833,099,065,556
2006	11,063,138,110,907	13,388,355,650,002	22,808,958,125	13,411,164,608,127	2,348,026,497,220
2007	15,945,376,837,943	18,301,362,191,730	97,855,426,894	18,399,217,618,625	2,453,840,780,682
2008	18,479,642,802,328	17,951,791,468,707	701,848,350,726	18,653,639,819,433	173,997,017,105
2009	19,123,920,627,951	20,324,345,158,885	1,052,545,471,859	21,376,890,630,744	2,252,970,002,793
2010	25,507,487,313,137	32,876,095,550,370	1,623,955,907,893	34,500,051,458,263	8,992,564,145,126
2011	34,952,221,308,124	42,035,955,496,346	1,796,262,816,977	43,832,218,313,322	8,879,997,005,198
<b>Total:</b>	<b>165,673,013,090,892</b>	<b>176,785,285,611,229</b>	<b>5,511,849,528,821</b>	<b>182,297,135,140,050</b>	<b>16,624,122,049,158</b>

### Zambia's Trade Flows in absolute US Dollar (2000 to 2011)

Flow Year	Imports(cif)	Domestic Exports(fob)	Re-Exports(fob)	Total Exports(fob)	Trade Balance
2000	871,386,492	857,162,791	12,322,625	869,485,416.00	-1,901,076
2001	1,079,955,769	974,976,195	3,812,082	978,788,277.00	-101,167,492
2002	1,103,420,711	938,812,212	5,704,981	944,517,193.00	-158,903,518
2003	1,574,300,779	973,386,279	5,919,576	979,305,855.00	-594,994,924
2004	2,161,774,011	1,569,772,851	12,463,536	1,582,236,387.00	-579,537,624
2005	2,574,917,607	2,164,120,186	12,212,327	2,176,332,513.00	-398,585,094
2006	3,027,310,787	3,674,763,391	6,824,871	3,681,588,262.00	654,277,475
2007	4,006,998,096	4,591,793,327	25,682,698	4,617,476,025.00	610,477,929
2008	5,061,390,791	4,909,524,577	189,326,707	5,098,851,284	37,460,493
2009	3,831,581,658	4,102,130,891	212,500,100	4,314,630,991	483,049,333
2010	5,321,002,628	6,863,323,917	337,627,232	7,200,951,149	1,879,948,521
2011	7,177,669,615	8,643,678,779	371,709,764	9,015,388,543	1,837,718,928
<b>Total:</b>	<b>37,791,708,944</b>	<b>40,263,445,396</b>	<b>1,196,106,499</b>	<b>41,459,551,895</b>	<b>3,667,842,951</b>

*The Editorial Team would like to thank all Media Institutions and Users of.....*

## “The Monthly Bulletin”

Thank you for supporting us

### Secretariat

John Kalumbi	- Director
Peter Mukuka	- Deputy Director
Richard Banda	- Research and Marketing Manager
Linda N. Chonya	- Senior Research Officer
Etambuyu Lukonga	- Documentalist
Anthony Nkole	- Desktop Publishing Officer
Perry Musenge	- Assistant Desktop Publishing Officer
Petronella Kaputu	- Press Liaison Officer
Chisuwa S. Nalishuwa	- Assistant Field Co-ordinator
Daniel Chipaila	- Statistician
George Mhango	- Sales Officer

### Editorial Team

John Kalumbi	- Director
Peter Mukuka	- Deputy Director (IRD)
Goodson Sinyenga	- Deputy Director (ECON)
Iven Sikanyiti	- A/Deputy Director (SOC)
Lubinda Mukata	- Nutritionist
Cecilia M. Munjita	- A/Senior Gender Analyst