

# The Monthly Bulletin

May 2020

Volume 206

## INSIDE THIS ISSUE

Year on Year Inflation Rate  
for May 2020 increases to  
16.6 Percent  
■■■■■

May 2020 Month on Month  
Inflation Rate decreases to  
1.6 Percent  
■■■■■

April 2020 records a Trade  
Surplus  
■■■■■

2019 Labour Market  
Statistics  
■■■■■

Highlights of the 2019/20  
Crop Forecast Survey  
■■■■■

2020 Census Mapping and  
Listing Update  
■■■■■

Get to know your New  
Statistics Act of 2018



**"Doing more with Less"**

*What do the figures say....*

**Statistics Twister**

*"We Measure What We Treasure,  
We Treasure What We Measure"*



**Zambia Statistics Agency • Nationalist Road •  
P.O. Box 31908 • Lusaka • Telefax: 260-211-253468**

e-mail: [info@zamstats.gov.zm](mailto:info@zamstats.gov.zm)  
\*dissemination.office@gmail.com  
Website: [www.zamstats.gov.zm](http://www.zamstats.gov.zm)

Data Portal: <http://zambia.opendataforafrica.org>

Like Our Facebook Page: [facebook.com/zamstats](https://facebook.com/zamstats)  
Follow Us on Twitter: [twitter.com/zamstats](https://twitter.com/zamstats)

## FOREWORD



**W**elcome to the Monthly presentation organised by the Dissemination Branch of the Zambia Statistics Agency. The Agency embarks on vigorous information delivery strategy to major stakeholders and the media institutions in order to increase utilisation of statistical products and services. The Agency produces a number of statistical products in the Economic, Social, Agricultural and Environmental areas. The information collected in these areas may be used for various purposes including policy formulation, planning, implementation, monitoring and evaluation of development programmes.

This Monthly publication is an attempt to provide highlights of the work of the Agency and how it can help media institutions and the general public to make use of data and information for decision-making and sustainable national development.

I would like to urge our readers and users of statistical information to send to us any comments that may enhance statistical production and contribute to the improvement of this bulletin.

A handwritten signature in black ink, appearing to read 'Mulenga J. J. Musepa', with a long horizontal line extending to the right.

Mulenga J. J. Musepa  
**INTERIM STATISTICIAN GENERAL**

28<sup>th</sup> May, 2020

# INFLATION

## CONSUMER PRICE INDEX

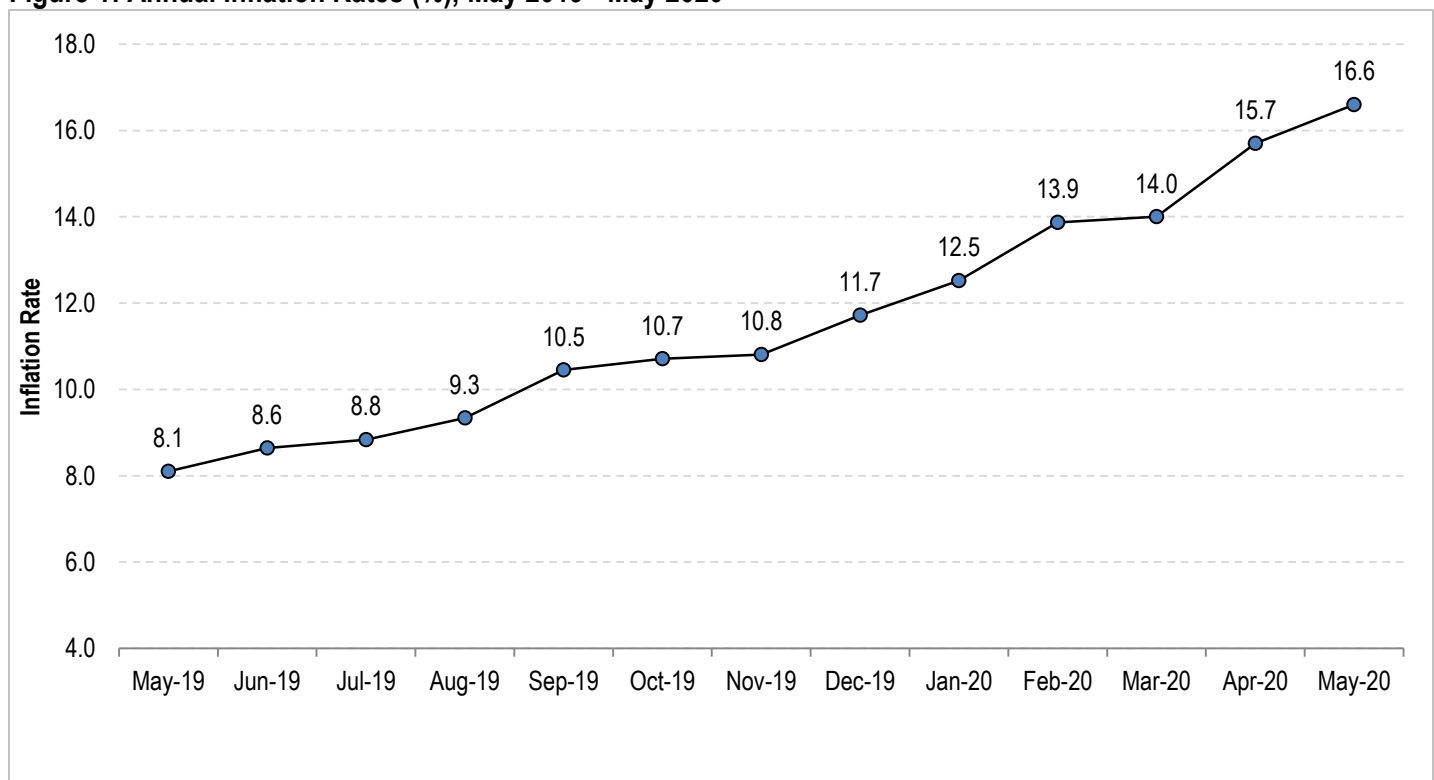
### Year on Year Inflation Rate for May 2020 increases to 16.6 Percent

The year- on- year (Annual) inflation rate as measured by the all items Consumer Price Index (CPI) for May 2020 increased to 16.6 percent from 15.7 percent recorded in April 2020 (**see figure 1**). This means that on average, prices of

goods and services increased by 16.6 percent between May 2019 and May 2020.

The increase in the annual rate of inflation was attributed to price increases in Food and Non-food items.

**Figure 1: Annual Inflation Rates (%), May 2019 - May 2020**



**Source:** ZamStats Prices Statistics, 2020

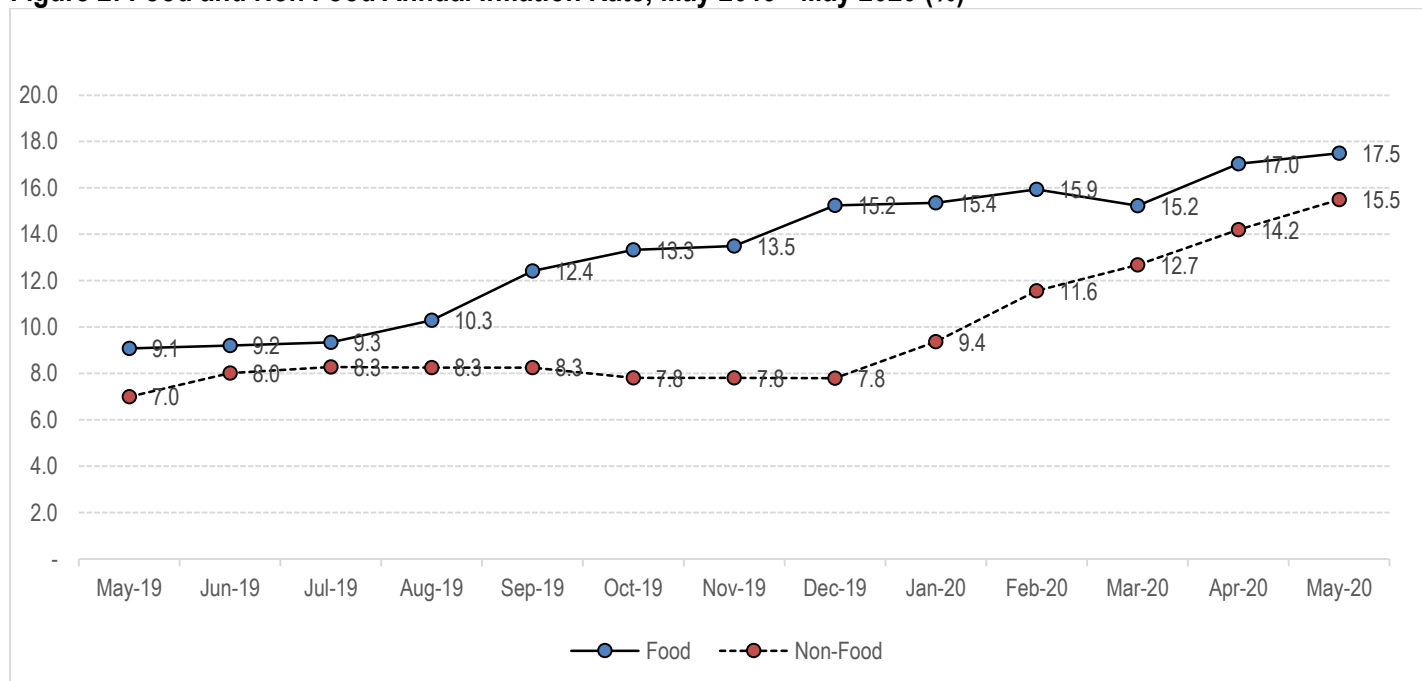
**Note:** 2009=100

## Year on Year Food and Non-Food Inflation Rate

The year-on-year food inflation rate for May 2020 was recorded at 17.5 percent compared to 17.0 percent recorded in April 2020, indicating an increase of 0.5 percentage points. This development was mainly attributed to increases in prices of food items such as Fish (i.e Dried Bream, Frozen fish (Bukabuka), Meats (i.e Fillet steak, Mixed cut, Beef sausage) and Oils& Fats (i.e Cooking oil, Margarine and Butter) and Other foods .n.e.c (i.e Table salt and soups).

The year-on-year non-food inflation rate for May 2020 was recorded at 15.5 percent compared to 14.2 percent recorded in April 2020, indicating an increase of 1.3 percentage points. This increase was mainly attributed to price changes in items such as Charcoal, Household Textiles (ie. Bedsheets, Blankets and Foam mattress), Soaps, and Pharmaceutical products(Cafenol, Asprin, Fansidar, Asthma Cure, No Cough) (**see figure 2**).

**Figure 2: Food and Non Food Annual Inflation Rate, May 2019 - May 2020 (%)**



Source: ZamStats, Prices Statistics, 2020

## **Annual Inflation Rate by CPI Main Groups**

### **The Annual Rate of Inflation for May 2020 increased for the following CPI Main Groups**

#### **1. Food and Non-alcoholic Beverages**

The CPI for the Food and Non-alcoholic beverages main group increased by 17.5 percent between May 2019 and May 2020. This means that prices of items in this group increased by 17.5 percent in May 2020 compared to 9.1 percent in the same month of 2019.

Furthermore, a comparison of the annual inflation rates for April 2020 and May 2020 for this group showed an increase from 17.0 percent to 17.5 percent **(see table 1)**.

#### **2. Alcoholic Beverages and Tobacco**

The CPI for the Alcoholic Beverages and Tobacco main group increased by 10.5 percent between May 2019 and May 2020. This means that prices of items in this group increased by 10.5 percent in May 2020 compared to 5.6 percent in the same month of 2019.

A comparison of the annual inflation rates for April 2020 and May 2020 for this group showed an increase from 8.2 percent to 10.5 percent. **(see table 1)**.

#### **3. Clothing and Footwear**

The CPI for the Clothing and Footwear main group increased by 7.4 percent between May 2019 and May 2020. This means that prices of items in this group increased by 7.4 percent in May 2020 compared to 6.4 percent in the same month of 2019.

A comparison of the annual inflation rates for April 2020 and May 2020 for this group showed an increase from 6.5 percent to 7.4 percent.

#### **4. Housing, Water, Electricity, Gas, & Other Fuels**

The CPI for the Housing, Water, Electricity, Gas, & Other Fuels group increased by 17.8 percent between May 2019 and May 2020. This means prices of items in this group increased by 17.8 percent in May 2020 compared to 6.0 percent in May 2019.

Furthermore, a comparison of the annual inflation rates for April 2020 and May 2020 for this group showed an increase from 17.1 percent to 17.8 percent **(see table 1)**.

#### **5. Furnishing, Household Equipment and Household Maintenance**

The CPI for the Furnishing, Household Equipment and Household Maintenance main group increased by 11.9 percent between May 2019 and May 2020. This means that prices of items in this group increased by 11.9 percent in May 2020 compared to 5.3 percent in the same month of 2019.

A comparison of the annual inflation rates for April 2020 and May 2020 for this group showed an increase from 8.8 percent to 11.9 percent.

## **6. Health**

The CPI for the Health main group increased by 11.0 percent between May 2019 and May 2020. This means that on average, prices of items in this group increased by 11.0 percent in May 2020 compared to 6.5 percent in the same month of 2019.

Furthermore, a comparison of the annual inflation rates for April 2020 and May 2020 for this group showed an increase from 7.7 percent to 11.0 percent.

## **7. Communication**

The CPI for the Communication main group increased by 2.3 percent between May 2019 and May 2020. This means that on average prices of items in this group increased by 2.3 percent in May 2020 compared to 0.8 percent in the same month of 2019.

A comparison of the annual inflation rates for April 2020 and May 2020 for this group showed an increase from 1.6 percent to 2.3 percent **(see table 1)**.

## **8. Recreation and Culture**

The CPI for the Recreation and Culture main group increased by 8.0 percent between May 2019 and May 2020. This means that on average prices of items in this group increased by 8.0 percent in May 2020 compared to 4.6 percent in the same month of 2019.

A comparison of the annual inflation rates for April 2020 and May 2020 for this group showed

an increase from 6.8 percent to 8.0 percent, respectively.

## **9. Education**

The CPI for the Education main group increased by 1.7 percent between May 2019 and May 2020. This means that on average prices of items in this group increased by 1.7 percent in May 2020 compared to 5.4 percent in the same month of 2019.

Furthermore, a comparison of the annual inflation rates for April 2020 and May 2020 for this group showed an increase from 1.1 percent to 1.7 percent **(see table 1)**.

## **10. Restaurant & Hotel**

The CPI for the Restaurant & Hotel CPI main group increased by 8.1 percent between May 2019 and May 2020. This means prices of items in this group increased by 8.1 percent in May 2020 compared to 6.6 percent in the same month of 2019.

A comparison of the annual inflation rates for April 2020 and May 2020 for this group showed an increase from 7.5 percent to 8.1 percent.

## **11. Miscellaneous Goods and Services**

The CPI for the Miscellaneous goods and services main group increased by 10.5 percent between May 2019 and May 2020.

A comparison of the annual inflation rates for April 2020 and May 2020 for this group showed an increase from 7.2 percent to 10.5 percent.



## The Annual Rate of Inflation for May 2020 slowed down for:

### 1. Transport

The CPI for the Transport main group increased by 39.4 percent between May 2019 and May 2020. This means that prices of items in this group increased by 39.4 percent in May 2020 compared to 14.5 percent in the same month of 2019.

A comparison of the annual inflation rates for April 2020 and May 2020 for this group showed a decrease from 40.1 percent to 39.4 percent (**see table 1**).

**Table 1: Annual Inflation Rate Trends by CPI Main Group (%)**

| Main Group  | Division Weight | May-19 | Jun-19 | Jul-19 | Aug-19 | Sep-19 | Oct-19 | Nov-19 | Dec-19 | Jan-20 | Feb-20 | Mar-20 | Apr-20 | May-20 |
|---|-----------------|--------|--------|--------|--------|--------|--------|--------|--------|--------|--------|--------|--------|--------|
| All Items   | 1 000           | 8.1    | 8.6    | 8.8    | 9.3    | 10.5   | 10.7   | 10.8   | 11.7   | 12.5   | 13.9   | 14.0   | 15.7   | 16.6   |
| Food and Non-alcoholic Beverages                  | 534.85          | 9.1    | 9.2    | 9.3    | 10.3   | 12.4   | 13.3   | 13.5   | 15.2   | 15.4   | 15.9   | 15.2   | 17.0   | 17.5   |
| Alcoholic Beverages and Tobacco                   | 15.21           | 5.6    | 6.1    | 6.7    | 6.8    | 7.2    | 7.1    | 7.1    | 6.7    | 6.4    | 6.7    | 7.0    | 8.2    | 10.5   |
| Clothing and Footwear                             | 80.78           | 6.4    | 6.0    | 6.4    | 6.5    | 6.5    | 6.6    | 6.7    | 6.3    | 5.7    | 6.1    | 6.2    | 6.5    | 7.4    |
| Housing, Water, Electricity, Gas, and Other Fuels | 114.11          | 6.0    | 5.9    | 5.9    | 5.5    | 5.4    | 5.3    | 5.3    | 5.3    | 12.0   | 15.9   | 17.4   | 17.1   | 17.8   |
| Furnishing, Household Equip., Routine HseMtc      | 82.36           | 5.3    | 5.9    | 6.2    | 6.2    | 6.3    | 7.1    | 7.4    | 7.3    | 7.7    | 7.3    | 7.9    | 8.8    | 11.9   |
| Health  | 8.15            | 6.5    | 6.9    | 7.1    | 7.4    | 7.8    | 7.7    | 7.8    | 7.8    | 8.1    | 8.4    | 7.5    | 7.7    | 11.0   |
| Transport   | 58.08           | 14.5   | 21.4   | 21.5   | 21.7   | 21.2   | 16.5   | 16.4   | 17.6   | 18.6   | 27.0   | 31.0   | 40.1   | 39.4   |
| Communication                                     | 12.94           | 0.8    | 0.9    | 0.9    | 1.4    | 1.4    | 1.4    | 1.6    | 1.6    | 1.6    | 1.6    | 1.6    | 1.6    | 2.3    |
| Recreation and Culture                            | 13.84           | 4.6    | 6.5    | 7.6    | 7.0    | 7.7    | 7.3    | 7.6    | 6.5    | 6.2    | 5.2    | 6.6    | 6.8    | 8.0    |
| Education   | 26.62           | 5.4    | 5.5    | 5.5    | 6.0    | 6.0    | 6.0    | 6.0    | 5.0    | 1.2    | 1.2    | 1.1    | 1.1    | 1.7    |
| Restaurant and Hotel                              | 3.37            | 6.6    | 6.5    | 7.6    | 7.5    | 8.0    | 8.1    | 7.9    | 7.2    | 6.9    | 7.0    | 7.6    | 7.5    | 8.1    |
| Miscellaneous Goods & Services                    | 49.69           | 6.7    | 7.1    | 7.5    | 7.7    | 7.9    | 8.0    | 7.4    | 7.3    | 6.7    | 6.5    | 6.8    | 7.2    | 10.5   |

Source: ZamStats, Prices Statistics, 2020

### Contribution of Main Groups to Overall Inflation

Of the overall 16.6 percent annual inflation rate recorded in May 2020, the Food and Non-alcoholic beverages group accounted for 9.3 percentage points, while Non-food items accounted for 7.3 percentage points. Of the 7.3 percentage points, the Transport group

contributed the highest at 2.6 and Housing, Water, Electricity, Gas and other fuels 2.2 percentage points, respectively. The rest Non Food groups accounted for the 2.5 percentage points (**see table 2**).

**Table 2: Contribution of Main Groups to Overall Inflation (%)**

| Main Group  | Division Weight | May-2019 | Jun-2019 | Jul-2019 | Aug-2019 | Sep-2019 | Oct-2019 | Nov-2019 | Dec-2019 | Jan-2020 | Feb-2020 | Mar-2020 | Apr-2020 | May-2020* |
|---|-----------------|----------|----------|----------|----------|----------|----------|----------|----------|----------|----------|----------|----------|-----------|
| Food and non-alcoholic beverages                                      | 534.85          | 4.8      | 4.9      | 5.0      | 5.5      | 6.6      | 7.0      | 7.1      | 8.0      | 8.1      | 8.4      | 8.1      | 9.1      | 9.3       |
| Alcoholic beverages, and tobacco                                      | 15.21           | 0.1      | 0.1      | 0.1      | 0.1      | 0.1      | 0.1      | 0.1      | 0.1      | 0.1      | 0.1      | 0.1      | 0.1      | 0.1       |
| Clothing and footwear   | 80.78           | 0.5      | 0.5      | 0.6      | 0.6      | 0.7      | 0.7      | 0.7      | 0.5      | 0.5      | 0.5      | 0.6      | 0.5      | 0.6       |
| Housing, water, electricity, gas and other fuels                      | 114.11          | 0.7      | 0.8      | 0.8      | 0.7      | 0.7      | 0.7      | 0.7      | 0.7      | 1.6      | 1.9      | 1.9      | 2.1      | 2.2       |
| Furnishings, household equipment and routine maintenance of the house | 82.36           | 0.4      | 0.5      | 0.5      | 0.5      | 0.5      | 0.6      | 0.6      | 0.6      | 0.6      | 0.6      | 0.6      | 0.7      | 0.9       |
| Health  | 8.15            | 0.1      | 0.1      | 0.1      | 0.1      | 0.1      | 0.1      | 0.1      | 0.1      | 0.1      | 0.1      | 0.1      | 0.1      | 0.1       |
| Transport   | 58.08           | 1.0      | 1.3      | 1.3      | 1.3      | 1.3      | 1.0      | 1.0      | 1.2      | 1.2      | 1.8      | 2.2      | 2.7      | 2.6       |
| Communications  | 12.94           | 0.0      | 0.0      | 0.0      | 0.0      | 0.0      | 0.0      | 0.0      | 0.0      | 0.0      | 0.0      | 0.0      | 0.0      | 0.0       |
| Recreation and culture  | 13.84           | 0.1      | 0.1      | 0.1      | 0.1      | 0.1      | 0.1      | 0.1      | 0.1      | 0.1      | 0.1      | 0.1      | 0.1      | 0.1       |
| Education   | 26.62           | 0.1      | 0.1      | 0.1      | 0.1      | 0.1      | 0.1      | 0.1      | 0.1      | 0.0      | 0.0      | 0.0      | 0.0      | 0.0       |
| Restaurants and hotels  | 3.37            | 0.0      | 0.0      | 0.0      | 0.0      | 0.0      | 0.0      | 0.0      | 0.0      | 0.0      | 0.0      | 0.0      | 0.0      | 0.0       |
| Miscellaneous goods and services                                      | 49.69           | 0.3      | 0.3      | 0.3      | 0.3      | 0.3      | 0.3      | 0.3      | 0.3      | 0.3      | 0.3      | 0.3      | 0.3      | 0.4       |

Source: ZamStats, Prices Statistics, 2020

\*Note: Figures may not add up due to rounding off

## Provincial Annual Inflation Rates

A disaggregation of the annual inflation rate by province shows that the annual inflation rate for April 2020 increased for Central, Copperbelt, Lusaka, Northern and Western provinces. Annual inflation decreased for Eastern, Luapula, Northwestern and Southern provinces. Provincial changes in annual inflation show that between May 2019 and May 2020, Northern

province had the highest rate of annual inflation at 20.4 percent, followed by Lusaka at 18.5 percent.

Eastern province recorded the lowest annual rate of inflation at 12.0 percent (see table 3).

**Table 3: Provincial Annual Inflation Rates May 2019 - May 2020 (%)**

|        | Central | Copperbelt | Eastern | Luapula | Lusaka | Northern | North Western | Southern | Western |
|--------|---------|------------|---------|---------|--------|----------|---------------|----------|---------|
| Weight | 107.19  | 219.68     | 88.98   | 50.60   | 283.89 | 65.72    | 32.33         | 109.19   | 42.42   |
| May-19 | 6.8     | 7.9        | 8.2     | 7.3     | 8.5    | 7.1      | 7.4           | 9.3      | 9.4     |
| Jun-19 | 7.7     | 8.3        | 8.4     | 7.3     | 9.3    | 7.5      | 7.4           | 9.8      | 9.8     |
| Jul-19 | 7.9     | 9.0        | 8.7     | 7.8     | 9.3    | 7.1      | 7.9           | 9.4      | 10.4    |
| Aug-19 | 9.8     | 9.2        | 9.9     | 8.2     | 9.6    | 7.8      | 7.9           | 9.6      | 10.5    |
| Sep-19 | 10.1    | 10         | 10.8    | 9.2     | 11.4   | 8.9      | 8.8           | 10.5     | 11.2    |
| Oct-19 | 9.9     | 9.9        | 11.3    | 10.1    | 11.6   | 9.6      | 8.4           | 11.6     | 11.2    |
| Nov-19 | 10.3    | 10.3       | 10.9    | 10.6    | 11.4   | 9.6      | 8.5           | 12.0     | 11.4    |
| Dec-19 | 10.6    | 10.5       | 10.6    | 11.9    | 12.5   | 12.0     | 9.4           | 14.7     | 11.0    |
| Jan-20 | 10.9    | 12.2       | 11.9    | 12.5    | 13.3   | 12.1     | 9.8           | 15.5     | 9.5     |
| Feb-20 | 13.0    | 12.3       | 11.8    | 13.3    | 16.0   | 14.2     | 11.5          | 16.6     | 8.7     |
| Mar-20 | 14.0    | 12.0       | 11.6    | 13.6    | 16.8   | 15.8     | 11.9          | 14.7     | 9.4     |
| Apr-20 | 15.8    | 14.9       | 12.1    | 15.1    | 18.1   | 17.2     | 14.1          | 15.5     | 11.5    |
| May-20 | 17.9    | 16.3       | 12.0    | 14.8    | 18.5   | 20.4     | 13.3          | 14.7     | 15.4    |

Source: ZamStats, Prices Statistics, 2020



## Provincial Contribution to Overall Inflation

At provincial level, Lusaka province made the highest contribution of 5.3 percentage points to the overall annual inflation rate of 16.6 percent recorded in May 2020. This implies that the price movements in Lusaka Province had the highest influence to the overall annual rate of inflation.

Copperbelt province had the second highest contribution of 3.4 percentage points while North Western province had the lowest contribution of 0.5 percentage point (**see table 4**).

**Table 4: Provincial Contribution to Overall Inflation, May 2019 -May 2020 (%)**

| Province      | Weight   | May 2019 | Jun 2019 | July 2019 | Aug 2019 | Sep 2019 | Oct 2019 | Nov 2019 | Dec 2019 | Jan 2020 | Feb 2020 | Mar 2020 | Apr 2020 | May* 2020 |
|---------------|----------|----------|----------|-----------|----------|----------|----------|----------|----------|----------|----------|----------|----------|-----------|
| National      | 1,000.00 | 8.1      | 8.6      | 8.8       | 9.3      | 10.5     | 10.7     | 10.8     | 11.7     | 12.5     | 13.9     | 14.0     | 15.7     | 16.6      |
| Central       | 107.19   | 0.7      | 0.8      | 0.8       | 1.0      | 1.1      | 1.0      | 1.1      | 1.1      | 1.1      | 1.4      | 1.4      | 1.6      | 1.9       |
| Copperbelt    | 219.68   | 1.7      | 1.7      | 1.9       | 1.9      | 2.1      | 2.1      | 2.2      | 2.2      | 2.6      | 2.6      | 2.5      | 3.2      | 3.4       |
| Eastern       | 88.98    | 0.8      | 0.8      | 0.8       | 0.9      | 1.0      | 1.1      | 1.0      | 1.0      | 1.1      | 1.1      | 1.1      | 1.2      | 1.1       |
| Luapula       | 50.60    | 0.4      | 0.4      | 0.4       | 0.4      | 0.5      | 0.5      | 0.5      | 0.6      | 0.6      | 0.7      | 0.7      | 0.7      | 0.7       |
| Lusaka        | 283.89   | 2.4      | 2.7      | 2.7       | 2.7      | 3.2      | 3.3      | 3.3      | 3.6      | 3.8      | 4.6      | 4.8      | 5.2      | 5.3       |
| Northern      | 65.72    | 0.5      | 0.5      | 0.5       | 0.5      | 0.6      | 0.6      | 0.6      | 0.8      | 0.8      | 0.9      | 1.0      | 1.1      | 1.3       |
| North-Western | 32.33    | 0.3      | 0.3      | 0.3       | 0.3      | 0.3      | 0.3      | 0.3      | 0.3      | 0.3      | 0.4      | 0.4      | 0.5      | 0.5       |
| Southern      | 109.19   | 1.0      | 1.0      | 1.0       | 1.1      | 1.2      | 1.3      | 1.3      | 1.6      | 1.7      | 1.8      | 1.6      | 1.7      | 1.6       |
| Western       | 42.42    | 0.4      | 0.4      | 0.4       | 0.4      | 0.5      | 0.5      | 0.5      | 0.5      | 0.4      | 0.4      | 0.4      | 0.5      | 0.7       |

Source: ZamStats, Prices Statistics, 2020

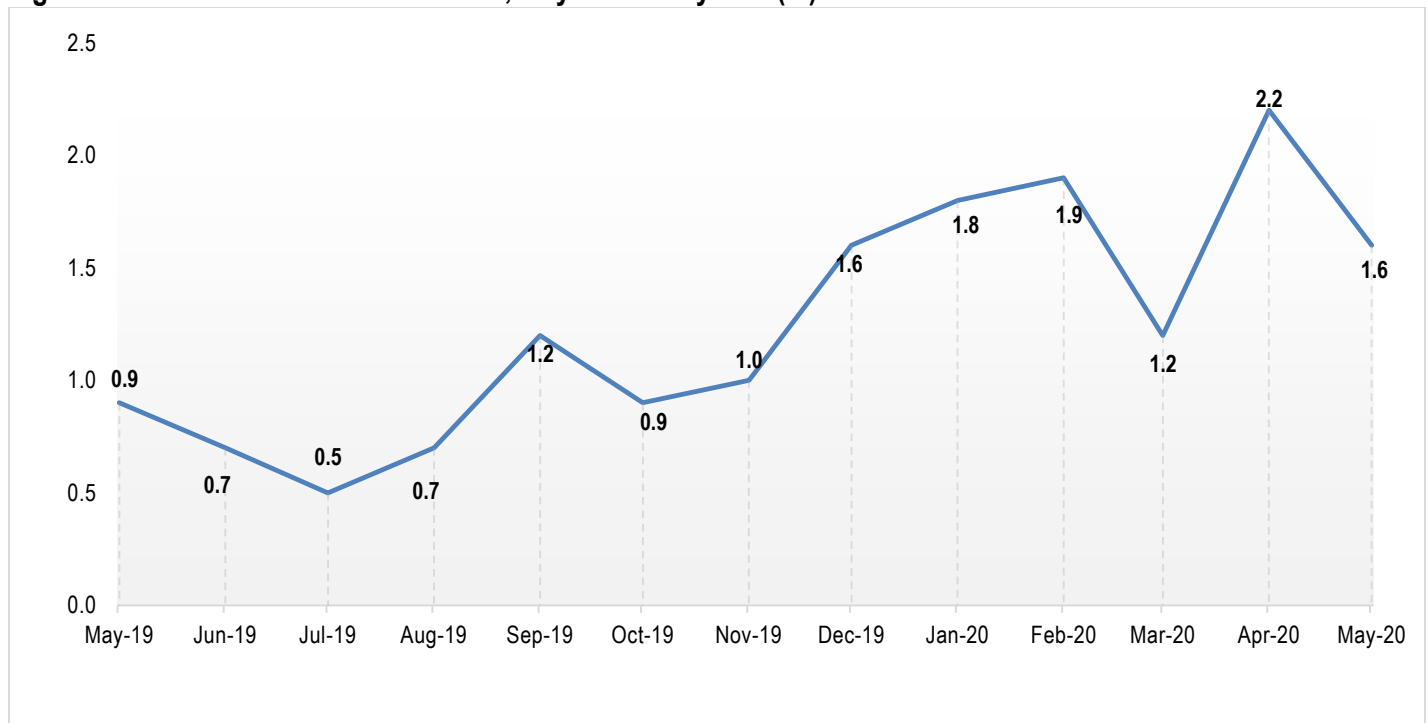
\*Note: Figures may not add up due to rounding off

## May 2020 Month on Month Inflation Rate Decreases to 1.6 Percent

The month on month (monthly) inflation rate for May 2020, was recorded at 1.6 percent indicating a decrease of 0.6 percentage points from 2.2 percent recorded in April 2020 (**see figure 3**). This means that on average, prices of goods and services increased by 1.6 percent between April 2020 and May 2020.

The slow down in the monthly inflation rate was attributed to general price movements of Breakfast Mealie meal, Roller Mealie meal, Maize Grain and Samp.

**Figure 3: Month on Month Inflation Rate, May 2019 - May 2020(%)**



Source: ZamStats, Prices Statistics, 2020

### Month on Month Inflation Rates for Food and Non-Food Items, May 2019 - May 2020

The monthly food inflation rate for May 2020 was recorded at 1.5 percent indicating a decrease of 1.1 percentage points from 2.6 percent recorded in April 2020. This means that on average, prices of food items increased by 1.5 percent between April 2020 and May 2020.

Non-Food inflation rate for May 2020 was recorded at 1.7 percent, same as in April 2020. This means that on average, prices of non-food items increased by 1.7 percent between April 2020 and May 2020 (see table 5).

**Table 5: Month on Month Inflation Rate: Food and Non-Food Items, May 2019 - May 2020 (%)**

|          | Weight:  | May 2019 | June 2019 | July 2019 | Aug 2019 | Sep 2019 | Oct 2019 | Nov 2019 | Dec 2019 | Jan 2020 | Feb 2020 | Mar 2020 | Apr 2020 | May 2020 |
|----------|----------|----------|-----------|-----------|----------|----------|----------|----------|----------|----------|----------|----------|----------|----------|
| Total    | 1,000.00 | 0.9      | 0.7       | 0.5       | 0.7      | 1.2      | 0.9      | 1.0      | 1.6      | 1.8      | 1.9      | 1.2      | 2.2      | 1.6      |
| Food     | 534.85   | 1.1      | 0.4       | 0.4       | 1.2      | 2.0      | 1.1      | 1.1      | 2.3      | 1.2      | 1.3      | 1.2      | 2.6      | 1.5      |
| Non-Food | 465.15   | 0.6      | 1.2       | 0.5       | 0.2      | 0.3      | 0.8      | 0.9      | 0.7      | 2.5      | 2.7      | 1.2      | 1.7      | 1.7      |

Source: ZamStats, Prices Statistics, 2020

Note: 2009=100

### District Average Prices for Selected Products, May 2020

The Consumer Price Basket consists of 440 items which are spread across selected outlets in all the districts in Zambia. Over 23,000 price quotations are collected from these outlets

between 1<sup>st</sup> and 10<sup>th</sup> of every month. Table 6 shows minimum and maximum prices by district for selected products.

**Table 6: District Average Prices for Selected Products, May 2020**

| Product Description   | Unit of Measure | Minimum   |                    | Maximum   |                                  |
|-----------------------|-----------------|-----------|--------------------|-----------|----------------------------------|
|                       |                 | Price (K) | Location           | Price (K) | Location                         |
| Breakfast Mealie Meal | 25 kg           | 125.00    | Monze              | 250.00    | Chavuma, Zambezi                 |
| Roller mealie meal    | 25 kg           | 98.00     | Choma, Mazabuka    | 200.00    | Chiengi                          |
| Maize Grain           | 20 litre tin    | 40.00     | **                 | 100.00    | Chingola, Ndola, Kaoma           |
| Cooking Oil           | 2.5 Litres      | 62.00     | Chibombo           | 100.00    | Chingola, Mufumbwe, Ithezi thezi |
| Charcoal              | 50 kg bag       | 25.00     | Namwala, Mporokoso | 120.00    | Lusaka                           |
| Cement                | 50 kg           | 88.00     | Chibombo           | 125.00    | Chama                            |

\*\* Kabwe, Nampudwe, Katete, Sinda, Choma, Mpika, Kasama, Chavuma, Mporokoso, Mbala, Kasempa

Source: ZamStats, Prices Statistics, 2020

### National Average Prices for Selected Products, May 2020

Analysis on a monthly basis, of retail prices between April 2020 and May 2020 shows that the national average price of a 25 kg bag of Breakfast Mealie meal decreased by 6.03 percent from K165.92 to K155.91 while the national average price of a 25 kg bag of Roller Mealie meal decreased by 9.07 percent from K146.57 to K 133.28. The national average price of a 20 litre tin of Maize grain decreased by 29.23 percent from K82.27 to K58.22.

On an annual basis, the analysis of retail prices between May 2019 and May 2020 shows that the national average price of a 25kg bag of Breakfast Mealie meal increased by 46.33 percent from K106.55 to K155.91. The national average price of a 20-litre tin of Maize grain increased by 21.06 percent from K48.09 to K58.22 **(see table 7)**.

**Table 7: National Average Prices for Selected Products, May 2020**

| Description                     | Unit of Measure |      | May 19     | Jun 19     | Jul 19     | Aug 19     | Nov 19     | Dec 19     | Jan 20     | Feb 20     | Mar 20     | Apr 20     | May 20     | Mth's Infl. | Yr's Infl. |
|---------------------------------|-----------------|------|------------|------------|------------|------------|------------|------------|------------|------------|------------|------------|------------|-------------|------------|
| Breakfast Mealie Meal           | 25              | Kg   | 106.55     | 107.96     | 110.83     | 120.69     | 150.49     | 163.30     | 162.52     | 162.30     | 168.15     | 165.92     | 155.91     | -6.03       | 46.33      |
| Roller Mealie Meal              | 25              | Kg   | 87.40      | 88.20      | 89.30      | 101.27     | 128.82     | 142.69     | 145.13     | 141.97     | 145.40     | 146.57     | 133.28     | -9.07       | 52.49      |
| Maize grain                     | 20              | ltr  | 48.09      | 44.87      | 45.88      | 50.96      | 69.90      | 79.02      | 82.65      | 86.98      | 89.21      | 82.27      | 58.22      | -29.23      | 21.06      |
| Samp                            | 1               | Kg   | 11.64      | 11.67      | 11.65      | 11.54      | 13.64      | 13.79      | 13.18      | 13.94      | 12.26      | 14.44      | 13.65      | -5.47       | 17.27      |
| Rice Local                      | 1               | Kg   | 14.30      | 14.80      | 15.21      | 15.49      | 16.10      | 16.90      | 16.78      | 17.35      | 17.19      | 17.51      | 18.52      | 5.77        | 29.51      |
| Brisket                         | 1               | Kg   | 37.41      | 37.55      | 37.94      | 37.77      | 38.85      | 38.87      | 38.11      | 38.64      | 39.89      | 39.27      | 40.33      | 2.70        | 7.81       |
| Mixed Cut                       | 1               | Kg   | 35.50      | 35.50      | 36.01      | 35.78      | 36.48      | 36.04      | 37.01      | 37.16      | 37.44      | 37.34      | 38.26      | 2.46        | 7.77       |
| T-bone                          | 1               | Kg   | 45.94      | 45.55      | 46.08      | 45.37      | 46.67      | 46.48      | 45.87      | 46.11      | 46.94      | 46.80      | 47.31      | 1.09        | 2.98       |
| Chicken Frozen                  | 1               | Kg   | 28.90      | 29.02      | 29.07      | 29.64      | 29.63      | 30.29      | 30.84      | 32.25      | 32.86      | 33.69      | 33.71      | 0.06        | 16.64      |
| Dried Bream-Medium Sized-Opened | 1               | Kg   | 88.38      | 92.57      | 87.25      | 88.81      | 97.61      | 95.67      | 113.88     | 116.73     | 98.77      | 104.81     | 112.00     | 6.86        | 26.73      |
| Dried Kapenta Mpulungu          | 1               | Kg   | 131.42     | 130.11     | 127.75     | 111.93     | 138.53     | 133.32     | 144.28     | 143.72     | 134.07     | 141.53     | 149.27     | 5.47        | 13.58      |
| Eggs                            | 1               | Tray | 33.84      | 33.77      | 34.79      | 35.66      | 34.93      | 36.31      | 37.24      | 38.12      | 38.55      | 39.32      | 39.63      | 0.79        | 17.11      |
| Cooking oil Local               | 3               | ltr  | 51.55      | 54.90      | 56.88      | 57.81      | 58.12      | 58.44      | 60.84      | 61.92      | 64.07      | 71.44      | 81.34      | 13.86       | 57.79      |
| Rape                            | 1               | Kg   | 6.13       | 5.28       | 4.80       | 4.51       | 4.96       | 5.61       | 6.00       | 5.77       | 5.99       | 6.37       | 6.22       | -2.35       | 1.47       |
| Cabbage                         | 1               | Kg   | 3.49       | 3.47       | 3.32       | 3.21       | 3.09       | 3.27       | 3.74       | 3.83       | 3.89       | 3.76       | 3.78       | 0.53        | 8.31       |
| Tomatoes                        | 1               | Kg   | 9.09       | 9.33       | 9.94       | 8.56       | 6.21       | 7.14       | 8.46       | 8.79       | 8.68       | 8.46       | 8.90       | 5.20        | -2.09      |
| Dried beans                     | 1               | Kg   | 16.86      | 15.80      | 16.81      | 16.39      | 16.49      | 17.30      | 17.52      | 19.64      | 19.51      | 19.96      | 20.64      | 3.41        | 22.42      |
| Sugar                           | 2               | Kg   | 28.13      | 28.31      | 28.33      | 28.55      | 28.46      | 28.82      | 29.35      | 29.65      | 30.26      | 31.34      | 31.93      | 1.88        | 13.51      |
| Mosi                            | 375             | ml   | 8.56       | 8.84       | 8.97       | 9.06       | 9.12       | 9.11       | 9.18       | 9.30       | 9.30       | 9.47       | 9.55       | 0.84        | 11.57      |
| Cement                          | 50              | Kg   | 71.23      | 69.24      | 72.13      | 72.73      | 88.25      | 89.18      | 95.22      | 100.71     | 103.38     | 103.21     | 107.28     | 3.94        | 50.61      |
| Charcoal                        | 50              | Kg   | 45.73      | 46.62      | 46.50      | 47.95      | 50.98      | 49.17      | 48.69      | 51.30      | 52.03      | 51.12      | 53.24      | 4.15        | 16.42      |
| Bed sheets                      | 1               | Pair | 154.77     | 159.12     | 145.40     | 158.31     | 157.43     | 166.25     | 166.57     | 160.91     | 168.88     | 171.06     | 182.18     | 6.50        | 17.71      |
| Blanket                         | 1               | Ea   | 87.23      | 98.43      | 91.19      | 92.12      | 96.09      | 98.28      | 97.02      | 100.45     | 105.32     | 101.11     | 107.38     | 6.20        | 23.10      |
| Boom Force(Scouring powder)     | 500             | gm   | 11.46      | 12.08      | 12.33      | 12.63      | 12.16      | 12.00      | 12.67      | 12.78      | 13.20      | 13.26      | 13.49      | 1.73        | 17.71      |
| Jik ordinary (Bleach)           | 500             | ml   | 14.78      | 15.48      | 15.55      | 15.58      | 16.24      | 15.91      | 16.20      | 16.42      | 16.95      | 17.43      | 17.93      | 2.87        | 21.31      |
| Medix cough syrup               | 100             | ml   | 18.38      | 19.22      | 20.65      | 22.04      | 18.94      | 21.17      | 20.50      | 18.59      | 21.81      | 19.71      | 19.78      | 0.36        | 7.62       |
| No cough                        | 1               | Pk10 | 16.14      | 15.92      | 16.05      | 16.91      | 17.22      | 17.51      | 17.27      | 16.71      | 16.80      | 17.14      | 18.70      | 9.10        | 15.86      |
| Fansider                        | 1               | pk20 | 4.59       | 4.72       | 4.72       | 4.87       | 5.10       | 5.31       | 5.62       | 5.55       | 5.56       | 5.85       | 6.66       | 13.85       | 45.10      |
| Toyota hilux                    | 1               | Ea   | 681,857.50 | 706,735.00 | 688,812.50 | 702,455.00 | 722,250.00 | 817,212.50 | 811,862.50 | 797,150.00 | 818,576.75 | 984,186.00 | 993,762.50 | 0.97        | 45.74      |
| Nissan Pick (Nissan Hardbody)   | 1               | Ea   | 309,027.00 | 391,500.00 | 402,600.00 | 379,900.00 | 403,650.00 | 441,025.00 | 451,490.00 | 451,490.00 | 365,365.00 | 585,900.00 | 590,500.00 | 0.79        | 91.08      |
| Lifebouy                        | 100             | gm   | 7.35       | 7.57       | 7.68       | 7.84       | 7.88       | 8.12       | 7.90       | 7.80       | 7.68       | 7.67       | 8.44       | 10.04       | 14.83      |
| Dettol                          | 100             | ml   | 16.78      | 16.40      | 16.94      | 16.94      | 17.78      | 18.49      | 18.89      | 19.27      | 19.16      | 18.48      | 18.71      | 1.24        | 11.50      |
| Hammer milling charge           | 20              | ltr  | 6.70       | 6.84       | 6.82       | 6.83       | 6.97       | 6.89       | 7.12       | 7.42       | 7.48       | 7.75       | 8.31       | 7.23        | 24.03      |

Source: ZamStats, Prices Statistics, 2020

## INTERNATIONAL MERCHANDISE TRADE

### April 2020 records a Trade Surplus

Zambia recorded a trade surplus valued at K2,231.6 million in April 2020 from K359.4 million recorded in March 2020, indicating a 521.0 percent increase. This trade surplus means that the country exported more than it imported in nominal terms.

Exports which mainly comprise of domestically produced goods increased by 4.7 percent from K8,530.2 million in March 2020 to K8,929.5 million in April 2020 (see table 8). This increase was mainly on account of a 7.6 percent increase in export earnings from Intermediate goods.

Imports decreased by 18.0 percent from K8,170.8 million in March 2020 to K6,697.9 million in April 2020. This decrease in imports was mainly as a result of a 45.2 percent and 20.3 percent decrease in imports of Consumer goods and Intermediate goods, respectively (see table 8).

The Total trade from January 2020 to April 2020 increased by 6.2 percent to K62,586.6 million from K58,924.1 million in the same period of 2019 (see figure 4).

| Table 8: Total Exports (FOB) and Imports (CIF), Jan. 2020 to Apr. 2020 (K' Million) |              |                       |                    |               |
|---|--------------|-----------------------|--------------------|---------------|
| Months  | Imports(CIF) | Domestic Exports(FOB) | Total Exports(FOB) | Trade Balance |
| Jan-20®   | 6 024.3      | 8 122.1               | 8 321.6            | 2 297.3       |
| Feb-20®   | 7 958.2      | 7 725.0               | 7 954.2            | (4.0)         |
| Mar-20®   | 8 170.8      | 8 275.4               | 8 530.2            | 359.4         |
| Quarter1  | 22 153.3     | 24 122.5              | 24 805.9           | 2 652.7       |
| Apr-20*   | 6 697.9      | 8 727.3               | 8 929.5            | 2 231.6       |
| Total:  | 28 851.2     | 32 849.8              | 33 735.4           | 4 884.3       |

Source: ZamStats, International Trade Statistics, 2020

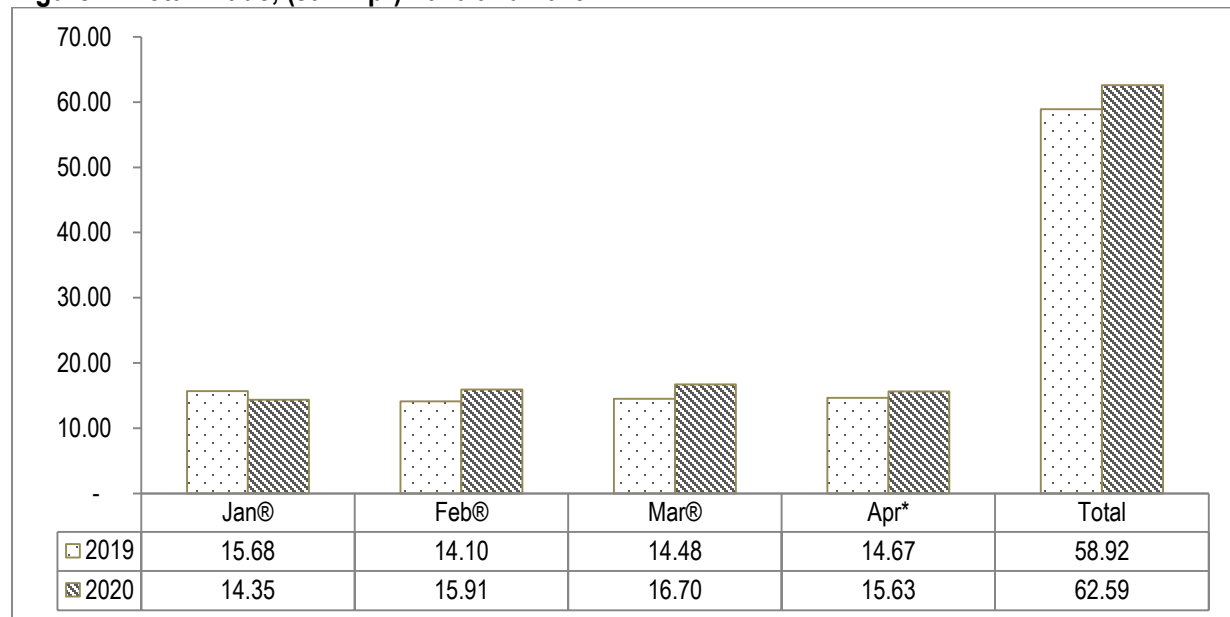
Source: ZamStats, International Trade Statistics, 2020

Note: These trade data are compiled based on the **General Trade System**

Domestic Exports-These are Commodities grown, produced or manufactured locally including commodities imported from foreign countries that have been significantly changed or enhanced in value. Re-Exports=Total Exports-Domestic Exports.

(\*) Provisional, (®) Revised

**Figure 4: Total Trade, (Jan-Apr) 2020 and 2019**



**Source:** ZamStats, International Trade Statistics, 2020

Note: (\*) Provisional

®Revised

### Performance of Traditional and Non-Traditional Exports, April 2020 and March 2020

The Traditional Exports (TE's) earnings increased by 10.1 percent from K6,401.0 million in March 2020 to K7,045.5 million in April 2020. In terms of share in total exports, TEs accounted for 78.9 percent revenue earnings in April 2020. In terms of

share in total exports, NTEs decreased by 11.5 percent from K2,129.1 million in March 2020 to K1,884.0 million in April 2020. In terms of share in total exports, NTEs recorded a 21.1 percent in April 2020 (**see table 9**).

| Table 9: Traditional Exports and Non-Traditional Exports, April 2020 and March 2020 |                   |              |                   |              |
|---|-------------------|--------------|-------------------|--------------|
| PERIOD  | Apr-20*           |              | Mar-20®           |              |
|   | Value (K'Million) | % Share      | Value (K'Million) | % Share      |
| Traditional Exports..   | 7 045.5           | 78.9         | 6 401.0           | 75.0         |
| Non-Traditional Exports   | 1 884.0           | 21.1         | 2 129.1           | 25.0         |
| <b>Total Exports</b>  | <b>8 929.5</b>    | <b>100.0</b> | <b>8 530.2</b>    | <b>100.0</b> |

**Source:** ZamStats, International Trade Statistics, 2020

Note: (\*) Provisional

®Revised

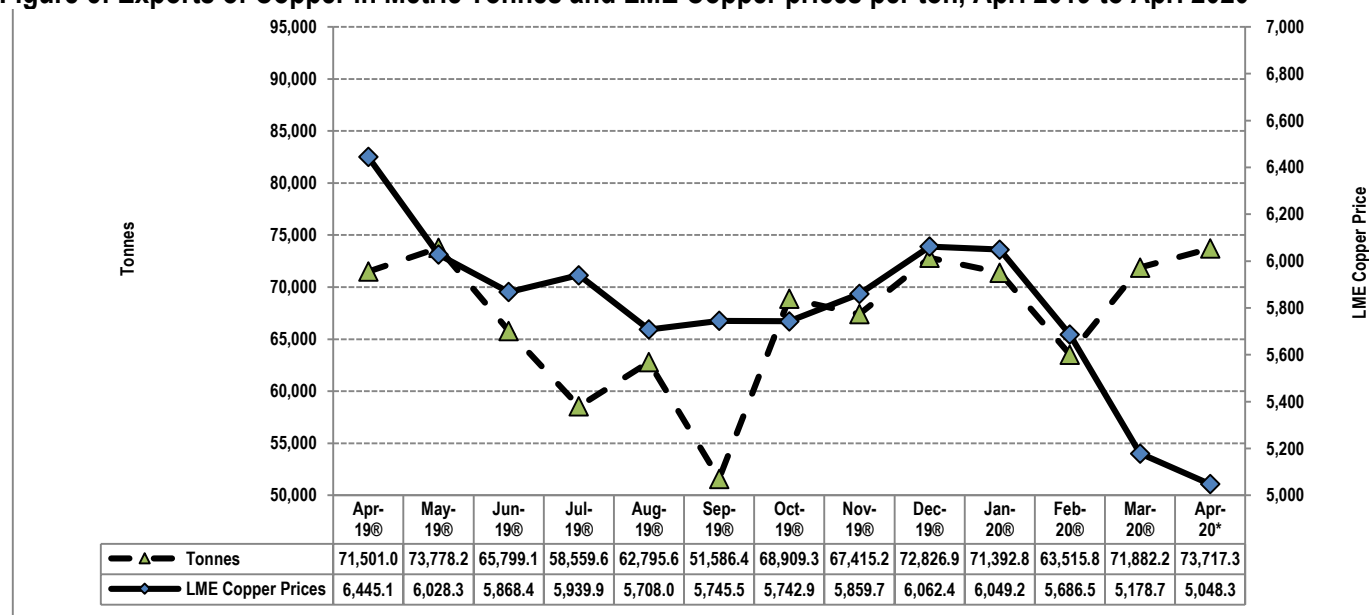


## Exports of Copper by Volume and LME prices, April 2020 and March 2020

The volume of Refined Copper exported in April 2020 increased by 2.6 percent from 71,882.2 metric tonnes in March 2020 to 73,717.3 metric tonnes.

The Copper prices on LME market for the corresponding months decreased by 2.5 percent, from US\$5,178.7 per metric tonne in March 2020 to US\$5,048.3 per metric tonne in April 2020 (see figure 5).

Figure 5: Exports of Copper in Metric Tonnes and LME Copper prices per ton, Apr. 2019 to Apr. 2020



Source: ZamStats, International Trade Statistics, 2020

Note: (\*) Provisional, ®Revised

## Performance of Non-Traditional Exports, April 2020 and March 2020

For the purpose of this analysis, Non-Traditional Exports are divided into Agricultural and Non-Agricultural products.

### Agricultural Products

Agricultural products accounted for a share of 15.2 percent of Zambia's Non-Traditional Exports (NTEs) in April 2020 compared to 20.5 percent recorded in March 2020.

The export earnings from Agricultural products decreased by 34.5 percent from K436.8 million in March 2020 to K286.0 million in April 2020. The major export commodities were 'Other raw cane sugar' accounting for 17.6 percent, 'Oil-cake and other solid residues, of soya-bean' (10.1 percent) and Soya-bean oil (excl. crude) (4.4 percent).

### Non-Agricultural Products

Non-Agricultural products accounted for a share of 84.8 percent of Zambia's Non-Traditional Exports (NTEs) in April 2020 compared to 79.5 percent recorded in March 2020.

The export earnings from Non-Agricultural products recorded a decrease of 5.6 percent from K1,692.3 million in March 2020 to K1,598.0 million in April 2020. The major export commodities were 'Sulphuric acid; oleum in bulk' accounting for 15.7 percent, 'Electrical energy' (11.5 percent) and 'Other non-alcoholic beverages, nes' (6.4 percent) (see table 10).

**Table 10: Zambia's Major Non-Traditional Exports, Apr. 2020 and Mar. 2020**

| Period                                  |  | Apr-20*           |              | Period                                  |  | Mar-20®           |              |
|---|--|-------------------|--------------|---|--|-------------------|--------------|
| Hs-Code                                 | Description  | Value (K'Million) | Share (%)    | Hs-Code                                 | Description  | Value (K'Million) | Share (%)    |
| <b>AGRIC PRODUCTS</b>                   |  | <b>286.0</b>      | <b>100.0</b> | <b>AGRIC PRODUCTS</b>                   |  | <b>436.8</b>      | <b>100.0</b> |
| 17011400                                | Other raw cane sugar   | 50.4              | 17.6         | 17011400                                | Other raw cane sugar   | 84.4              | 19.3         |
| 23040000                                | Oil-cake and other solid residues, of soya-bean                                      | 28.9              | 10.1         | 23040000                                | Oil-cake and other solid residues, of soya-bean                                      | 28.9              | 6.6          |
| 15079000                                | Soya-bean oil (excl. crude) and fractions  | 12.4              | 4.4          | 12081000                                | Soya bean flour and meal   | 25.6              | 5.9          |
| 09011100                                | Coffee, not roasted or decaffeinated   | 8.8               | 3.1          | 52010000                                | Cotton, not carded or combed   | 23.6              | 5.4          |
| 01051100                                | Live fowls of species gallus domesticus, weighing =<185g (chicks)                    | 7.2               | 2.5          | 10051000                                | Maize seed   | 14.5              | 3.3          |
| 10051000                                | Maize seed   | 7.1               | 2.5          | 24012000                                | Tobacco, partly or wholly stemmed/stripped   | 11.0              | 2.5          |
| 06031100                                | Fresh cut Roses and buds   | 6.7               | 2.4          | 09011100                                | Coffee, not roasted or decaffeinated   | 10.1              | 2.3          |
| 04090000                                | Natural honey  | 4.1               | 1.4          | 02071400                                | Frozen cuts and offal of chicken   | 9.3               | 2.1          |
| Other - Agric Product NTE's             |  | 160.4             | 56.1         | Other - Agric Product NTE's             |  | 229.5             | 52.5         |
| % Share of Apr Agric Products NTE's     |  | <b>15.2</b>       |              | % Share of Mar Agric Products NTE's     |  | <b>20.5</b>       |              |
| <b>NON-AGRIC PRODUCTS</b>               |  | <b>1 598.0</b>    | <b>100.0</b> | <b>NON-AGRIC PRODUCTS</b>               |  | <b>1 692.3</b>    | <b>100.0</b> |
| 28070010                                | Sulphuric acid; oleum in bulk  | 250.8             | 15.7         | 28070010                                | Sulphuric acid; oleum in bulk  | 185.7             | 11.0         |
| 27160000                                | Electrical energy  | 183.9             | 11.5         | 27160000                                | Electrical energy  | 185.2             | 10.9         |
| 22029900                                | Other non-alcoholic beverages, nes   | 101.8             | 6.4          | 25232900                                | Portland cement (excl. white)  | 106.4             | 6.3          |
| 25221000                                | Quicklime  | 99.9              | 6.3          | 74081100                                | Wire of refined copper, maximum cross-sectional dimension >6mm                       | 85.1              | 5.0          |
| 25232900                                | Portland cement (excl. white)  | 92.0              | 5.8          | 25030000                                | Sulphur of all kinds (excl. sublimed, precipitated and colloidal sulphur)            | 70.9              | 4.2          |
| 25030000                                | Sulphur of all kinds (excl. sublimed, precipitated and colloidal sulphur)            | 73.8              | 4.6          | 22029900                                | Other non-alcoholic beverages, nes   | 69.9              | 4.1          |
| 34022020                                | Detergents used for washing clothes, dishes and kitchen utensils                     | 63.3              | 4.0          | 25221000                                | Quicklime  | 69.4              | 4.1          |
| 74081100                                | Wire of refined copper, maximum cross-sectional dimension >6mm                       | 44.2              | 2.8          | 34022020                                | Detergents used for washing clothes, dishes and kitchen utensils                     | 59.1              | 3.5          |
| 25231000                                | Cement clinkers  | 34.9              | 2.2          | 71081310                                | Bullion semi-manufactured forms  | 58.3              | 3.4          |
| 72023000                                | Ferro-silico-manganese   | 33.4              | 2.1          | 38249900                                | Other nes  | 55.2              | 3.3          |
| 72021100                                | Ferro-manganese, containing by weight >2% carbon                                     | 33.4              | 2.1          | 25231000                                | Cement clinkers  | 42.1              | 2.5          |
| 84139100                                | Parts of pumps for liquids   | 30.8              | 1.9          | 26040000                                | Nickel ores and concentrates   | 31.4              | 1.9          |
| 26040000                                | Nickel ores and concentrates   | 28.6              | 1.8          | 72023000                                | Ferro-silico-manganese   | 29.6              | 1.7          |
| 38249900                                | Other nes  | 28.0              | 1.8          | 72142090                                | Iron/steel bars & rods, hotrolled, twisted/with deformtns from rolling proc. - Other | 21.4              | 1.3          |
| 72142090                                | Iron/steel bars & rods, hotrolled, twisted/with deformtns from rolling proc. - Other | 23.7              | 1.5          | 85433000                                | Machines/apparatus for electroplating, electrolysis or electrophoresis               | 19.3              | 1.1          |
| Other - Non Agric Product NTE's         |  | 475.4             | 29.7         | Other - Non Agric Product NTE's         |  | 603.1             | 35.6         |
| % Share of Apr Non-Agric Products NTE's |  | <b>84.8</b>       |              | % Share of Mar Non-Agric Products NTE's |  | <b>79.5</b>       |              |
| <b>NTE's</b>                            |  | <b>1 884.0</b>    |              | <b>NTE's</b>                            |  | <b>2 129.1</b>    |              |

Source: ZamStats, International Trade Statistics, 2020

Note: (\*) Provisional

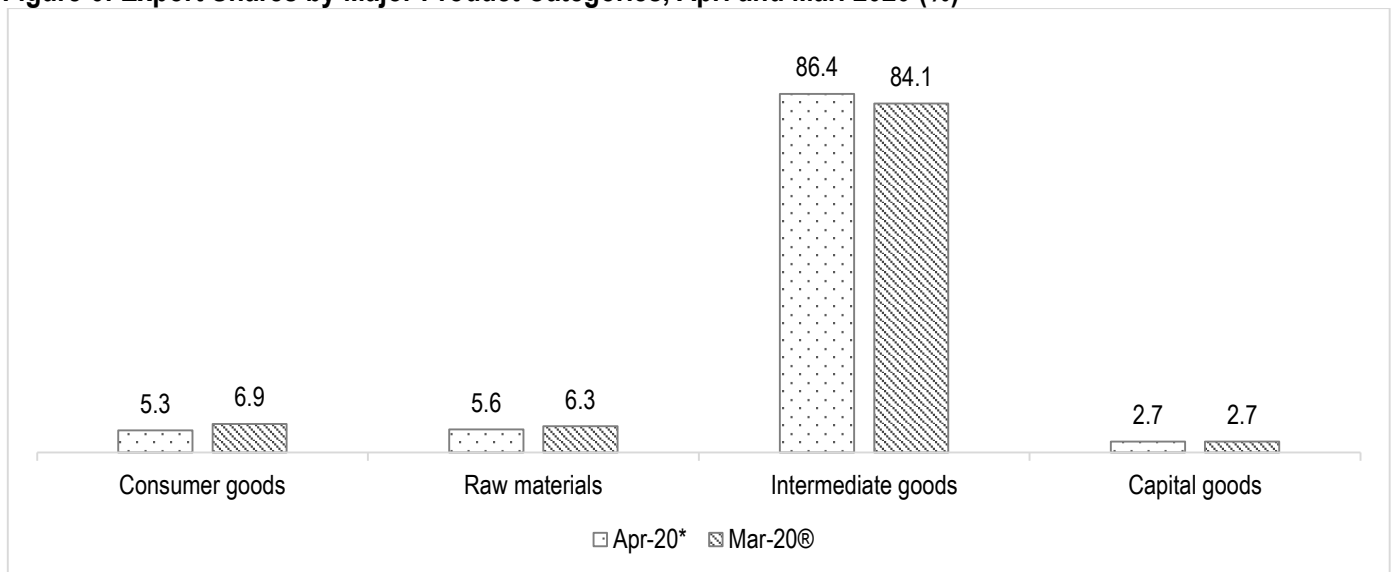
(®) Revised figures

## Exports by Major Product Categories, April and March 2020

Zambia's major export products in April 2020 were from the intermediate goods category (mainly comprising Copper anodes for electrolytic refining and Copper blister) accounting for 86.4 percent.

Exports from the Consumer goods, Raw Materials and Capital goods categories, collectively accounted for 13.6 percent of Total exports in April 2020 (see figure 6).

**Figure 6: Export Shares by Major Product Categories, Apr. and Mar. 2020 (%)**



**Source:** ZamStats, International Trade Statistics, 2020

**Note:** (\*) Provisional

(®) Revised

### Zambia's Major Export Destinations by Commodity in April 2020

The major export destination in April 2020 was Switzerland, which accounted for 35.1 percent of the total export earnings. The main export product to Switzerland was Copper anodes for electrolytic refining, accounting for 63.5 percent of total export earnings from that country.

China was the second main export destination accounting for 24.5 percent of the total export earnings. The major export products were Copper anodes for electrolytic refining, accounting for 48.2 percent of total export earnings from that country.

Congo DR was the third main export destination accounting for 16.9 percent of the total export earnings. The major export product was Copper concentrate sulphide, accounting for 19.8 percent of total export earnings from that country.

Singapore was the fourth main destination of Zambia's exports accounting for 13.2 percent of the total export earnings. The major export product to Singapore was Copper anodes for electrolytic refining, accounting for 62.4 percent of total export earnings from that Country.

Luxembourg was the fifth main export destination accounting for 2.2 percent of the total export earnings. The major export products were Master alloys of copper, accounting for 81.9 percent of total export earnings from that country.

These five countries collectively accounted for 91.9 percent of Zambia's total export earnings in April 2020 (**see table 11**).

| Table 11: Zambia's Five Major Export Destinations by Product for Apr. 2020 |   |                   |         |
|--|---|-------------------|---------|
| Country / Hs-Code  | Description   | Apr-20*           |         |
|  |   | Value (K'Million) | % Share |
| SWITZERLAND  |   | 3,136.1           | 100.0   |
| 74020020   | Copper anodes for electrolytic refining   | 1,991.0           | 63.5    |
| 74031110   | Cathodes and sections of cathodes of refined copper                                   | 568.4             | 18.1    |
| 74031130   | Electro-won copper cathodes (High Purity)   | 336.3             | 10.7    |
| 74020011   | Copper blister  | 148.3             | 4.7     |
| 74031140   | Electro-won copper cathodes (Low Purity)  | 63.5              | 2.0     |
| 26040000   | Nickel ores and concentrates  | 28.6              | 0.9     |
| 02011000   | Carcasses and half-carcasses  | 0.0               | 0.0     |
| 02013000   | Boneless  | 0.0               | 0.0     |
| 02023000   | Frozen boneless bovine meat   | 0.0               | 0.0     |
| 02031100   | Fresh or chilled swine carcasses and half carcasses                                   | 0.0               | 0.0     |
| Other Products   |   | 0.0               | 0.0     |
| Percent of Total Apr Exports   |   | 35.1              |         |
| CHINA  |   | 2,185.9           | 100.0   |
| 74020020   | Copper anodes for electrolytic refining   | 1,053.5           | 48.2    |
| 74020011   | Copper blister  | 916.5             | 41.9    |
| 74031130   | Electro-won copper cathodes (High Purity)   | 186.3             | 8.5     |
| 26020000   | Manganese ores/concentrates(inc.ferruginous), with manganese cont.of=>20%             | 10.1              | 0.5     |
| 44079900   | Other wood sawn or chipped lengthwise, sliced or peeled,...of thickness > 6mm nes     | 5.9               | 0.3     |
| 44092900   | Non-coniferous wood continuously shaped along any of its edges,ends of faces... other | 4.3               | 0.2     |
| 12119000   | Other plants or parts, of a kind used in perfumery, pharmacy...etc, nes               | 3.4               | 0.2     |
| 44039900   | Wood, nes in the rough..., (excl. treated)  | 2.0               | 0.1     |
| 72023000   | Ferro-silico-manganese  | 1.6               | 0.1     |
| 68159900   | Articles of stone or other mineral substances, nes                                    | 1.5               | 0.1     |
| Other Products   |   | 0.7               | 0.0     |
| Percent of Total Apr Exports   |   | 24.5              |         |
| CONGO DR   |   | 1,512.3           | 100.0   |
| 26030021   | Copper concentrate sulphide   | 300.2             | 19.8    |
| 28070010   | Sulphuric acid; oleum in bulk   | 250.8             | 16.6    |
| 25221000   | Quicklime   | 99.7              | 6.6     |
| 22029900   | Other non-alcoholic beverages, nes  | 98.7              | 6.5     |
| 27160000   | Electrical energy   | 83.6              | 5.5     |
| 25030000   | Sulphur of all kinds (excl. sublimed, precipitated and colloidal sulphur)             | 72.1              | 4.8     |
| 34022020   | Detergents used for washing clothes, dishes and kitchen utensils                      | 63.3              | 4.2     |
| 25232900   | Portland cement (excl. white)   | 59.1              | 3.9     |
| 19053100   | Sweet biscuits.   | 47.3              | 3.1     |
| 17011400   | Other raw cane sugar  | 43.4              | 2.9     |
| Other Products   |   | 394.2             | 26.1    |
| Percent of Total Apr Exports   |   | 16.9              |         |
| SINGAPORE  |   | 1,182.1           | 100.0   |
| 74020020   | Copper anodes for electrolytic refining   | 737.8             | 62.4    |
| 74031130   | Electro-won copper cathodes (High Purity)   | 353.1             | 29.9    |
| 74031110   | Cathodes and sections of cathodes of refined copper                                   | 75.0              | 6.3     |
| 74050000   | Master alloys of copper   | 16.2              | 1.4     |
| 02011000   | Carcasses and half-carcasses  | 0.0               | 0.0     |
| 02013000   | Boneless  | 0.0               | 0.0     |
| 02023000   | Frozen boneless bovine meat   | 0.0               | 0.0     |
| 02031100   | Fresh or chilled swine carcasses and half carcasses                                   | 0.0               | 0.0     |
| 02071100   | Fresh or chilled whole chickens   | 0.0               | 0.0     |
| 02071200   | Frozen whole chickens   | 0.0               | 0.0     |
| Other Products   |   | 0.0               | 0.0     |
| Percent of Total Apr Exports   |   | 13.2              |         |
| LUXEMBOURG   |   | 192.0             | 100.0   |
| 74050000   | Master alloys of copper   | 157.2             | 81.9    |
| 74020020   | Copper anodes for electrolytic refining   | 34.8              | 18.1    |
| 02011000   | Carcasses and half-carcasses  | 0.0               | 0.0     |

| Table 11: Zambia's Five Major Export Destinations by Product for Apr. 2020 |   |                   |         |
|--|---|-------------------|---------|
| Country / Hs-Code  | Description   | Apr-20*           |         |
|  |   | Value (K'Million) | % Share |
| 02013000   | Boneless  | 0.0               | 0.0     |
| 02023000   | Frozen boneless bovine meat                         | 0.0               | 0.0     |
| 02031100   | Fresh or chilled swine carcasses and half carcasses | 0.0               | 0.0     |
| 02071100   | Fresh or chilled whole chickens                     | 0.0               | 0.0     |
| 02071200   | Frozen whole chickens                               | 0.0               | 0.0     |
| 02071300   | Fresh or chilled cuts and offal of chickens         | 0.0               | 0.0     |
| 02071400   | Frozen cuts and offal of chicken                    | 0.0               | 0.0     |
| Other Products   |   | 0.0               | 0.0     |
| Percent of Total Apr Exports   |   | 2.2               |         |
| Other Destination  |   | 721.1             | 8.1     |
| Total Value Of Apr Exports   |   | 8,929.5           | 100.0   |

Source: ZamStats, International Trade Statistics, 2020

Note: (\*) Provisional

### Zambia's Top Five Non-Traditional Exports Destinations by Product in April 2020

The major NTEs destination in April 2020 was Congo DR, which accounted for 64.3 percent of the total Non-Traditional Exports earnings. The main NTE product to Congo DR was, Sulphuric acid; oleum in bulk, accounting for 20.7 percent of total NTEs earnings from that country.

Malawi was the second main destination of Zambia's NTEs accounting for 5.4 percent of the total NTEs earnings. The major NTE product to Malawi was Portland cement (excl. white) accounting for 22.6 percent of total NTEs earnings from that Country.

Namibia was the third main NTEs destination accounting for 4.4 percent of the total NTEs earnings. The major NTE products were Electrical energy accounting for 96.8 percent of total NTEs earnings from that country.

Tanzania was the fourth main NTEs destination accounting for 3.3 percent of the total NTEs earnings. The major NTE products were Wire of refined copper, maximum cross-sectional dimension >6mm accounting for 37.1 percent of total NTEs earnings from that country.

The fifth main NTEs destination was Zimbabwe which accounted for 3.0 percent of the total NTEs earnings. The major NTE products were Oil-cake and other solid residues, of soya-bean accounting for 22.1 percent of total NTEs earnings from that country.

These five countries collectively accounted for 80.5 percent of Zambia's total Non-Traditional Exports earnings in April 2020 (**see table 12**).

**Table 12: Zambia's Top Five Non-Traditional Exports Destinations by Product, Apr. 2020**

| Country/Hs-Code                              |   | Description | Apr-20*           |         |
|--|---|-------------|-------------------|---------|
|  |   |             | Value (K'Million) | % Share |
| CONGO DR                                     |   |             | 1 212.2           | 100.0   |
| 28070010                                     | Sulphuric acid; oleum in bulk   |             | 250.8             | 20.7    |
| 25221000                                     | Quicklime   |             | 99.7              | 8.2     |
| 22029900                                     | Other non-alcoholic beverages, nes  |             | 98.7              | 8.1     |
| 27160000                                     | Electrical energy   |             | 83.6              | 6.9     |
| 25030000                                     | Sulphur of all kinds (excl. sublimed, precipitated and colloidal sulphur)         |             | 72.1              | 5.9     |
| 34022020                                     | Detergents used for washing clothes, dishes and kitchen utensils                  |             | 63.3              | 5.2     |
| 25232900                                     | Portland cement (excl. white)   |             | 59.1              | 4.9     |
| 19053100                                     | Sweet biscuits.   |             | 47.3              | 3.9     |
| 17011400                                     | Other raw cane sugar  |             | 43.4              | 3.6     |
| 84139100                                     | Parts of pumps for liquids  |             | 30.8              | 2.5     |
| Others                                       |   |             | 363.5             | 30.0    |
| Percent of Total Apr Non-Traditional Exports |   |             | 64.3              |         |
| MALAWI                                       |   |             | 102.0             | 100.0   |
| 25232900                                     | Portland cement (excl. white)   |             | 23.1              | 22.6    |
| 25231000                                     | Cement clinkers   |             | 13.3              | 13.0    |
| 72142090                                     | Iron/steel bars & rods,hotrolled,twiste/with deformtns from rolling proc. - Other |             | 8.0               | 7.9     |
| 34022090                                     | Other Washing and cleaning preparations put up for retail sale                    |             | 7.5               | 7.4     |
| 27160000                                     | Electrical energy   |             | 5.8               | 5.7     |
| 72162100                                     | L sections of iron/steel, hot-rolled..., <80mm high                               |             | 4.2               | 4.1     |
| 08026110                                     | Macadamia nuts in shells, dried   |             | 3.8               | 3.7     |
| 74081100                                     | Wire of refined copper, maximum cross-sectional dimension >6mm                    |             | 3.0               | 2.9     |
| 30022000                                     | Vaccines for human medicine   |             | 2.9               | 2.9     |
| 25223000                                     | Hydraulic lime  |             | 2.9               | 2.9     |
| Others                                       |   |             | 27.5              | 26.9    |
| Percent of Total Apr Non-Traditional Exports |   |             | 5.4               |         |
| NAMIBIA                                      |   |             | 83.4              | 100.0   |
| 27160000                                     | Electrical energy   |             | 80.7              | 96.8    |
| 23021000                                     | Brans, sharps and other residues of maize   |             | 1.2               | 1.5     |
| 23040000                                     | Oil-cake and other solid residues, of soya-bean                                   |             | 0.9               | 1.1     |
| 23063000                                     | Oil-cake and other solid residues of sunflower seeds                              |             | 0.3               | 0.3     |
| 17031000                                     | Cane molasses resulting from the extraction or refining of sugar                  |             | 0.2               | 0.3     |
| 30049000                                     | Other medicaments of mixed or unmixed products, for retail sale, nes              |             | 0.0               | 0.0     |
| 87079000                                     | Bodies (incl. cabs) for the motor vehicles, nes                                   |             | 0.0               | 0.0     |
| 63079000                                     | Made up articles (incl. dress patterns), nes                                      |             | 0.0               | 0.0     |
| 84281000                                     | Lifts and skip hoists   |             | 0.0               | 0.0     |
| 39269099                                     | Other articles of plastics,nes  |             | 0.0               | 0.0     |
| Others                                       |   |             | 0.0               | 0.0     |
| Percent of Total Apr Non-Traditional Exports |   |             | 4.4               |         |
| TANZANIA                                     |   |             | 63.0              | 100.0   |
| 74081100                                     | Wire of refined copper, maximum cross-sectional dimension >6mm                    |             | 23.4              | 37.1    |
| 23040000                                     | Oil-cake and other solid residues, of soya-bean                                   |             | 7.7               | 12.2    |
| 27160000                                     | Electrical energy   |             | 5.7               | 9.1     |
| 10051000                                     | Maize seed  |             | 3.9               | 6.2     |
| 36020090                                     | Other prepared explosives, (excl. propellent powders)                             |             | 3.5               | 5.6     |
| 85444900                                     | Electric conductors, nes, for a voltage <=80 V, not fitted with connectors        |             | 2.2               | 3.5     |
| 72082500                                     | Flat/hot-rolled iron/steel,in coils,width >=600mm,pickled, >=4.75mm thick         |             | 1.8               | 2.9     |
| 74130000                                     | Stranded wire, cables... of copper, not electrically insulated                    |             | 1.7               | 2.7     |
| 72023000                                     | Ferro-silico-manganese  |             | 1.5               | 2.3     |
| 01051100                                     | Live fowls of species gallus domesticus, weighing =<185g (chicks)                 |             | 1.4               | 2.2     |
| Others                                       |   |             | 10.2              | 16.2    |
| Percent of Total Apr Non-Traditional Exports |   |             | 3.3               |         |
| ZIMBABWE                                     |   |             | 56.1              | 100.0   |
| 23040000                                     | Oil-cake and other solid residues, of soya-bean                                   |             | 12.4              | 22.1    |



**Table 12: Zambia's Top Five Non-Traditional Exports Destinations by Product, Apr. 2020**

| Country/Hs-Code                                     | Description  | Apr-20*           |              |
|---|--|-------------------|--------------|
|   |  | Value (K'Million) | % Share      |
| 01051100  | Live fowls of species gallus domesticus, weighing =<185g (chicks)          | 5.5               | 9.8          |
| 84295200  | Self-propelled bulldozers... with a 360° revolving superstructure          | 4.2               | 7.5          |
| 36020090  | Other prepared explosives, (excl. propellant powders)                      | 3.7               | 6.6          |
| 25222000  | Slaked lime  | 3.0               | 5.3          |
| 84295100  | Self-propelled front-end shovel loaders                                    | 2.9               | 5.2          |
| 25232900  | Portland cement (excl. white)  | 2.7               | 4.8          |
| 84279000  | Works trucks fitted with lifting or handling equipment, nes                | 2.4               | 4.3          |
| 85481000  | Waste/scrap of primary cells/batteries/accum;spent primary cells,batteries | 1.7               | 3.0          |
| 07133190  | Dried beans(vigna mungo), shelled...Other                                  | 1.6               | 2.9          |
| Others  |  | 16.1              | 28.6         |
| <b>Percent of Total Apr Non-Traditional Exports</b> |  | <b>3.0</b>        |              |
| Other Destinations                                  |  | 367.2             | 19.5         |
| <b>Total Value of Apr Non-Traditional Exports</b>   |  | <b>1 884.0</b>    | <b>100.0</b> |

**Source:** ZamStats, International Trade Statistics, 2020

**Note:** (\*) Provisional

## Export Market Shares by selected Regional Groupings and Major Trading Partners, April and March 2020

Asia was the largest market for Zambia's total exports, accounting for 39.1 percent in April 2020. Within this grouping, China was the dominant market with 62.6 percent. Other notable markets in this grouping were Singapore, Hong Kong, India and United Arab Emirates.

Switzerland was the second largest market for Zambia's total exports in April 2020, accounting for 35.1 percent.

The DUAL- SADC & COMESA grouping was the third largest market for Zambia's total exports, accounting for 18.9 percent in April 2020. Within this grouping, Congo DR was the dominant export market, accounting for 89.4 percent. Other notable markets in this grouping were Malawi, Zimbabwe, Mauritius and The Kingdom of Eswatini.

The European Union was the fourth largest market for Zambia's total exports, accounting

for 2.8 percent in April 2020. Within this grouping, Luxembourg was the dominant market with 75.6 percent. Other notable markets in this grouping were Italy, Germany, Netherlands and Spain.

The SADC exclusive grouping was the fifth largest market for Zambia's total exports, accounting for 2.7 percent in April 2020. Within this grouping, Namibia was the dominant market with 34.4 percent. Other notable markets within this grouping were Tanzania, South Africa, Botswana and Mozambique.

The COMESA exclusive grouping was the sixth largest market for Zambia's total exports, accounting for 0.7 percent in April 2020. Within this grouping, Burundi was the dominant market with 60.2 percent. Other notable markets were Kenya, Uganda, Rwanda and Comoros (**see table 13**).

**Table 13: Export Market Shares by Selected Regional Groupings, Apr. 2020 and Mar. 2020**

| GROUPING                      | Apr-20*           |              | GROUPING                      | Mar-20®           |              |
|-------------------------------|-------------------|--------------|-------------------------------|-------------------|--------------|
|                               | Value (K'Million) | % Share      |                               | Value (K'Million) | % Share      |
| <b>ASIA</b>                   | <b>3,489.5</b>    | <b>100.0</b> | <b>ASIA</b>                   | <b>2,979.1</b>    | <b>100.0</b> |
| China                         | 2,185.9           | 62.6         | China                         | 1,830.3           | 48.1         |
| Singapore                     | 1,182.1           | 33.9         | Singapore                     | 1,043.8           | 21.3         |
| Hong Kong                     | 62.1              | 1.8          | Hong Kong                     | 48.5              | 16.1         |
| India                         | 29.4              | 0.8          | India                         | 36.0              | 8.0          |
| United Arab Emirates          | 12.9              | 0.4          | United Arab Emirates          | 8.0               | 3.6          |
| Other ASIA                    | 17.1              | 0.5          | Other ASIA                    | 12.5              | 3.0          |
| <b>% of Total Apr Exports</b> | <b>39.1</b>       |              | <b>% of Total Mar Exports</b> | <b>34.9</b>       |              |
| <b>DUAL-SADC &amp; COMESA</b> | <b>1,690.7</b>    | <b>100.0</b> | <b>DUAL-SADC &amp; COMESA</b> | <b>1,517.7</b>    | <b>100.0</b> |
| Congo DR                      | 1,512.3           | 89.4         | Congo DR                      | 1,330.5           | 87.7         |
| Malawi                        | 102.0             | 6.0          | Zimbabwe                      | 94.8              | 6.2          |
| Zimbabwe                      | 56.1              | 3.3          | Malawi                        | 92.3              | 6.1          |
| Mauritius                     | 20.2              | 1.2          | Eswatinii (Swaziland)         | 0.1               | 0.0          |
| Eswatini (Swaziland)          | 0.0               | 0.0          | Madagascar                    | 0.0               | 0.0          |
| Other DUAL-SADC & COMESA      | 0.0               | 0.0          | Other DUAL-SADC & COMESA      | 0.0               | 0.0          |
| <b>% of Total Apr Exports</b> | <b>18.9</b>       |              | <b>% of Total Mar Exports</b> | <b>17.8</b>       |              |
| <b>EUROPEAN UNION</b>         | <b>254.1</b>      | <b>100.0</b> | <b>EUROPEAN UNION</b>         | <b>116.4</b>      | <b>100.0</b> |
| Luxembourg                    | 192.0             | 75.6         | Luxembourg                    | 31.9              | 27.4         |
| Italy                         | 35.1              | 13.8         | Italy                         | 19.4              | 16.6         |
| Germany                       | 14.5              | 5.7          | Germany                       | 18.3              | 15.7         |
| Netherlands                   | 6.8               | 2.7          | Denmark                       | 12.9              | 11.1         |
| Spain                         | 2.7               | 1.0          | Belgium                       | 9.1               | 7.8          |
| Other EU                      | 3.0               | 1.2          | Other EU                      | 24.7              | 21.2         |
| <b>% of Total Apr Exports</b> | <b>2.8</b>        |              | <b>% of Total Mar Exports</b> | <b>1.4</b>        |              |
| <b>SADC Exclusive</b>         | <b>242.5</b>      | <b>100.0</b> | <b>SADC Exclusive</b>         | <b>443.7</b>      | <b>100.0</b> |
| Namibia                       | 83.4              | 34.4         | South Africa                  | 213.3             | 61.4         |
| Tanzania                      | 63.3              | 26.1         | Namibia                       | 94.4              | 35.0         |
| South Africa                  | 61.3              | 25.3         | Tanzania                      | 71.6              | 1.6          |
| Botswana                      | 19.2              | 7.9          | Botswana                      | 35.4              | 1.2          |
| Mozambique                    | 14.6              | 6.0          | Mozambique                    | 15.9              | 0.3          |
| Other SADC Exclusive          | 0.6               | 0.2          | Other SADC Exclusive          | 13.2              | 0.4          |
| <b>% of Total Apr Exports</b> | <b>2.7</b>        |              | <b>% of Total Mar Exports</b> | <b>5.2</b>        |              |
| <b>COMESA Exclusive</b>       | <b>60.5</b>       | <b>100.0</b> | <b>COMESA Exclusive</b>       | <b>91.4</b>       | <b>100.0</b> |
| Burundi                       | 36.4              | 60.2         | Burundi                       | 38.7              | 42.4         |
| Kenya                         | 19.3              | 31.9         | Kenya                         | 19.6              | 21.4         |
| Uganda                        | 2.7               | 4.4          | Rwanda                        | 17.3              | 18.9         |
| Rwanda                        | 1.9               | 3.2          | Uganda                        | 15.5              | 16.9         |
| Comoros                       | 0.2               | 0.3          | Comoros                       | 0.3               | 0.3          |
| Other COMESA Exclusive        | 0.0               | 0.0          | Other COMESA Exclusive        | 0.0               | 0.0          |
| <b>% of Total Apr Exports</b> | <b>0.7</b>        |              | <b>% of Total Mar Exports</b> | <b>1.1</b>        |              |
| <b>SWITZERLAND</b>            | <b>3,136.1</b>    | <b>35.1</b>  | <b>SWITZERLAND</b>            | <b>3,326.0</b>    | <b>39.0</b>  |
| Rest of the World             | 56.0              | 0.6          | Rest of the World             | 55.9              | 0.7          |
| <b>World</b>                  | <b>8,929.5</b>    | <b>100.0</b> | <b>World</b>                  | <b>8,530.2</b>    | <b>100.0</b> |

Source: ZamStats, International Trade Statistics, 2019

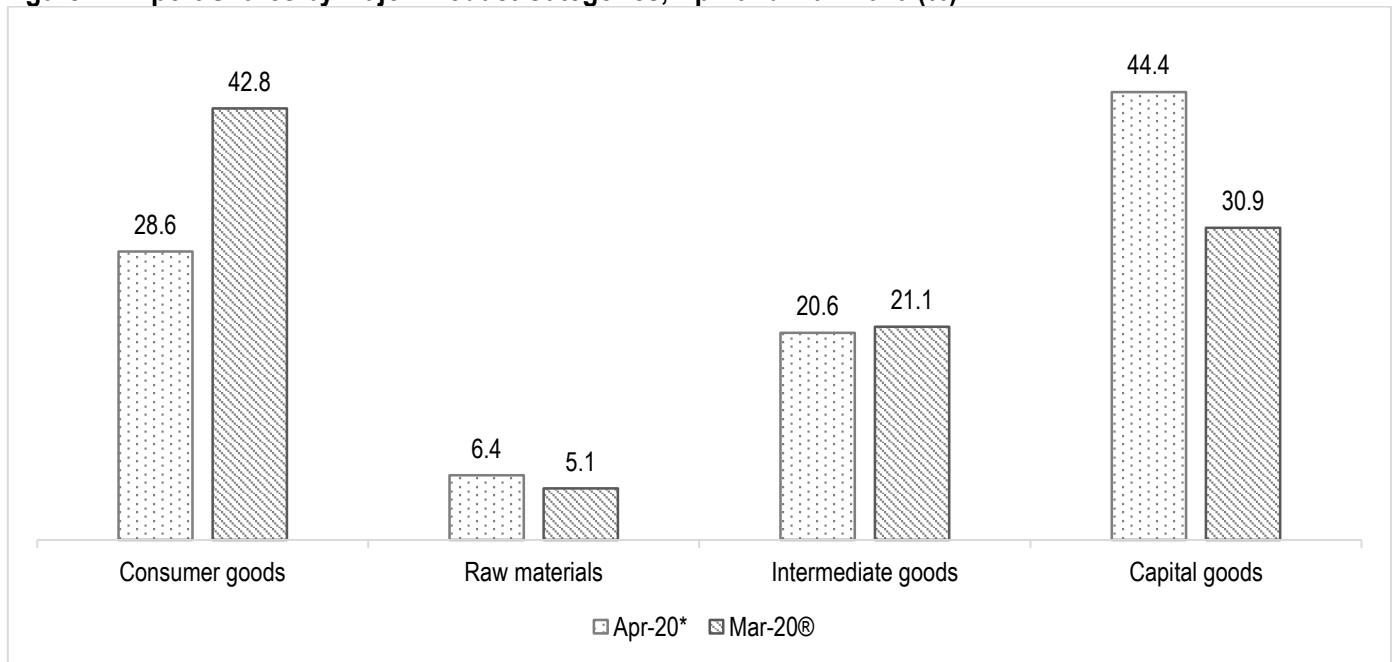
Note: 1. SADC = (SADC EXCLUSIVE + Dual SADC & COMESA)  
 2. COMESA = (COMESA Exclusive + Dual SADC & COMESA)  
 \*\* Switzerland Does not belong to any Regional Grouping but is our Major Export Destination  
 (\*) Provisional Revised figures

## Imports by Major Product Categories, April and March 2020

The major import products by product category in April 2020 were Capital goods category, accounting for 44.4 percent. The Consumer goods category was second with

28.6 percent, followed by the Intermediate goods and Raw Materials Categories, accounting for 20.6 percent and 6.4 percent, respectively (see figure 7).

Figure 7: Import Shares by Major Product Categories, Apr. and Mar. 2020 (%)



Source: ZamStats, International Trade Statistics, 2020

Note: (\*) Provisional

### Zambia's Major Import Sources by Product in April 2020

The major source of imports in April 2020 was South Africa, accounting for 34.7 percent. The main import product was Other fertilizers, nes accounting for 37.2 percent of the import bill from that country.

The second main source was United Arab Emirates accounting for 12.9 percent. The major import product was Petroleum oils and oils obtained from bituminous minerals, crude, which accounted for 42.4 percent of the import bill from that country.

China was the third main source of Zambia's imports, accounting for 12.1 percent. The major import products were Motor vehicles for transport of persons sitting capacity more than 14 (Diesel), accounting for 13.6 percent of the import bill from that country.

Other sources of Zambia's imports were Congo DR (Cobalt oxides and hydroxides) and India (Medicine), which collectively accounted for 10.3 percent of Zambia's imports (see table 14).

Table 14: Zambia's Five Major Import Sources by Product for Apr. 2020

| Table 14: Zambia's Five Major Import Sources by Product for Apr. 2020 |   |                   |         |
|---|---|-------------------|---------|
| Country / Hs-Code   | Description   | Apr-20*           |         |
|   |   | Value (K'Million) | % Share |
| SOUTH AFRICA  |   | 2,320.9           | 100.0   |
| 31059000  | Other fertilizers, nes  | 863.4             | 37.2    |
| 31052000  | Mineral or chemical fertilizers with nitrogen, phosphorus and potassium   | 102.2             | 4.4     |
| 31023000  | Ammonium nitrate  | 56.2              | 2.4     |
| 38249900  | Other nes   | 50.2              | 2.2     |
| 10011900  | Durum wheat, excl. seed   | 39.0              | 1.7     |
| 25030000  | Sulphur of all kinds (excl. sublimed, precipitated and colloidal sulphur) | 31.2              | 1.3     |
| 15071000  | Crude soya-bean oil   | 30.8              | 1.3     |

**Table 14: Zambia's Five Major Import Sources by Product for Apr. 2020**

| Country / Hs-Code                   | Description  | Apr-20*           |              |
|-------------------------------------|--|-------------------|--------------|
|                                     |  | Value (K'Million) | % Share      |
| 27101990                            | Other oils.  | 28.8              | 1.2          |
| 30049000                            | Other medicaments of mixed or unmixed products, for retail sale, nes                     | 25.8              | 1.1          |
| 10019900                            | Meslin, excl. seed   | 22.5              | 1.0          |
| Other Products                      |  | 1,070.8           | 46.1         |
| <b>Percent of Total Apr Imports</b> |  | <b>34.7</b>       |              |
| <b>UNITED ARAB EMIRATES</b>         |  | <b>862.5</b>      | <b>100.0</b> |
| 27090000                            | Petroleum oils and oils obtained from bituminous minerals, crude                         | 366.0             | 42.4         |
| 31052000                            | Mineral or chemical fertilizers with nitrogen, phosphorus and potassium                  | 118.6             | 13.8         |
| 27101210                            | Motor Spirit   | 102.2             | 11.8         |
| 27101910                            | Gas oils.  | 51.7              | 6.0          |
| 27131100                            | Petroleum coke, not calcined   | 44.0              | 5.1          |
| 31021000                            | Urea   | 40.3              | 4.7          |
| 29041010                            | Hydrocarbon derivatives containing only sulpho groups, their salts, etc - IN BULK        | 26.6              | 3.1          |
| 84779000                            | Parts of machinery for working rubber or plastics, etc                                   | 10.7              | 1.2          |
| 28353100                            | Sodium triphosphate (sodium tripolyphosphates)   | 9.9               | 1.2          |
| 72091500                            | Flat/cold-rolled iron/steel, in coils, width >=600mm, >=3mm thick                        | 9.5               | 1.1          |
| Other Products                      |  | 83.0              | 9.6          |
| <b>Percent of Total Apr Imports</b> |  | <b>12.9</b>       |              |
| <b>CHINA</b>                        |  | <b>807.2</b>      | <b>100.0</b> |
| 87021090                            | Motor vehicles for transport of persons sitting capacity more than 14 (Diesel)           | 110.1             | 13.6         |
| 85444900                            | Electric conductors, nes, for a voltage <=80 V, not fitted with connectors               | 67.2              | 8.3          |
| 72283000                            | Bars and rods of alloy steel, nes, hot-rolled, -drawn or extruded                        | 34.3              | 4.2          |
| 84137000                            | Centrifugal pumps for liquids, nes   | 34.2              | 4.2          |
| 40112010                            | New pneumatic tyres of rubber, of a kind used on buses or lorries- rim size 50cm to 57cm | 23.9              | 3.0          |
| 63079000                            | Made up articles (incl. dress patterns), nes   | 21.4              | 2.7          |
| 84798900                            | Machines, having individual functions, nes   | 20.6              | 2.5          |
| 30046000                            | Other, containing antimalarial active principles described in Subhead Note 2 to this Chp | 20.2              | 2.5          |
| 39172930                            | Plastic pipe tube fittings   | 19.0              | 2.4          |
| 90251990                            | Thermometers/Pyrometers, not comb. with other R instrumts, not liquid-filled nes - Other | 16.5              | 2.0          |
| Other Products                      |  | 439.9             | 54.5         |
| <b>Percent of Total Apr Imports</b> |  | <b>12.1</b>       |              |
| <b>CONGO DR</b>                     |  | <b>346.0</b>      | <b>100.0</b> |
| 28220020                            | Cobalt oxides and hydroxides; commercial cobalt oxides not in bulk                       | 224.3             | 64.8         |
| 26030021                            | Copper concentrate sulphide  | 57.6              | 16.6         |
| 26030029                            | Other - copper concentrate   | 40.3              | 11.6         |
| 26080000                            | Zinc ores and concentrates   | 16.6              | 4.8          |
| 26030019                            | Other copper ores  | 6.7               | 1.9          |
| 84295100                            | Self-propelled front-end shovel loaders  | 0.3               | 0.1          |
| 25309000                            | Other mineral substances, nes  | 0.3               | 0.1          |
| 87112000                            | Motorcycles with reciprocating engine of capacity 50-250cc                               | 0.0               | 0.0          |
| 27090000                            | Petroleum oils and oils obtained from bituminous minerals, crude                         | 0.0               | 0.0          |
| 27109900                            | Other waste oils excluding those containing PCBs, PCTs or PBBs.                          | 0.0               | 0.0          |
| Other Products                      |  | 0.0               | 0.0          |
| <b>Percent of Total Apr Imports</b> |  | <b>5.2</b>        |              |

**Table 14: Zambia's Five Major Import Sources by Product for Apr. 2020**

| Country / Hs-Code                   | Description   | Apr-20*           |              |
|-------------------------------------|---|-------------------|--------------|
|                                     |   | Value (K'Million) | % Share      |
| <b>INDIA</b>                        |   | <b>344.4</b>      | <b>100.0</b> |
| 29036200                            | Hexachlorobenzene(ISO), and DDT(ISO) (clofenotane(INN), 1,1,1-trichloro-2,2-bis(p-chlor.. | 65.8              | 19.1         |
| 30049000                            | Other medicaments of mixed or unmixed products, for retail sale, nes                      | 23.0              | 6.7          |
| 39206310                            | Plates..., of unsaturated polyesters, not reinforced, etc                                 | 14.2              | 4.1          |
| 85042300                            | Liquid dielectric transformers, power handling capacity >10000kva                         | 9.7               | 2.8          |
| 31023000                            | Ammonium nitrate  | 9.6               | 2.8          |
| 38089110                            | Other insecticides, for use in agriculture or horticulture, nes                           | 7.8               | 2.3          |
| 30042000                            | Other, containing antibiotics   | 7.7               | 2.2          |
| 63051000                            | Sacks and bags, used for packing goods, of jute, etc                                      | 7.1               | 2.1          |
| 84771000                            | Injection-moulding machines for working rubber or plastics, etc                           | 6.3               | 1.8          |
| 84392000                            | Machinery for making paper or paperboard  | 5.8               | 1.7          |
| Other Products                      |   | 187.5             | 54.4         |
| <b>Percent of Total Apr Imports</b> |   | <b>5.1</b>        |              |
| Other Sources                       |   | 2,016.8           | 30.1         |
| <b>Total Value of Apr Imports</b>   |   | <b>6,697.9</b>    | <b>100.0</b> |

Source: ZamStats, International Trade Statistics, 2020

Note: (\*) Provisional

### Import Market Shares by Selected Regional Groupings and Major Trading Partners April and March 2020

The SADC exclusive grouping was the main source of Zambia's imports, accounting for 39.1 percent in April 2020. Within this regional grouping, South Africa was the major supplier of Zambia's imports accounting for 88.6 percent. Other notable markets were Namibia, Mozambique, Tanzania and Botswana.

Asia was the second main source of Zambia's imports accounting for 37.5 percent in April 2020. Within this grouping, United Arab Emirates was the main source of Zambia's imports accounting for 34.3 percent. Other notable markets were China, India, Japan and Malaysia.

The Dual SADC & COMESA grouping was the third main source of Zambia's imports, accounting for 9.3 percent in April 2020. Within

this grouping, Congo DR was the dominant market with 55.5 percent. Other notable markets were Seychelles, Mauritius, Zimbabwe and Malawi.

The European Union (EU) was the fourth largest source of Zambia's imports accounting for 8.9 percent. Within this grouping, The United Kingdom was the main source of Zambia's imports accounting for 17.6 percent. Other notable markets were France, Germany, Sweden and Netherlands.

The COMESA exclusive grouping was the fifth largest source for Zambia's imports accounting for 0.9 percent in April 2020. Within this grouping, Kenya was the dominant market with 73.1 percent. Other notable markets were Egypt, Uganda, Ethiopia and Burundi (**see table 15**).

**Table 15: Import Market Shares by Selected Regional Groupings, Apr. 2020 and Mar. 2020**

| GROUPING                      | Apr-20*           |              | GROUPING                      | Mar-20®           |              |
|-------------------------------|-------------------|--------------|-------------------------------|-------------------|--------------|
|                               | Value (K'Million) | % Share      |                               | Value (K'Million) | % Share      |
| <b>SADC Exclusive</b>         | <b>2,619.2</b>    | <b>100.0</b> | <b>SADC Exclusive</b>         | <b>2,778.0</b>    | <b>100.0</b> |
| South Africa                  | 2,320.9           | 88.6         | South Africa                  | 2,399.4           | 86.4         |
| Namibia                       | 120.9             | 4.6          | Tanzania                      | 186.4             | 6.7          |
| Mozambique                    | 93.6              | 3.6          | Namibia                       | 137.3             | 4.9          |
| Tanzania                      | 64.8              | 2.5          | Mozambique                    | 37.6              | 1.4          |
| Botswana                      | 18.4              | 0.7          | Botswana                      | 17.2              | 0.6          |
| Other SADC Exclusive          | 0.7               | 0.0          | Other SADC Exclusive          | 0.0               | 0.0          |
| <b>% of Total Apr Imports</b> | <b>39.1</b>       |              | <b>% of Total Mar Imports</b> | <b>34.0</b>       |              |
| <b>ASIA</b>                   | <b>2,511.5</b>    | <b>100.0</b> | <b>ASIA</b>                   | <b>3,512.5</b>    | <b>100.0</b> |
| United Arab Emirates          | 862.5             | 34.3         | China                         | 1,449.3           | 41.3         |
| China                         | 807.2             | 32.1         | United Arab Emirates          | 1,103.1           | 31.4         |
| India                         | 344.4             | 13.7         | India                         | 449.7             | 12.8         |
| Japan                         | 118.3             | 4.7          | Japan                         | 141.9             | 4.0          |
| Malaysia                      | 61.4              | 2.4          | Hong Kong                     | 104.6             | 3.0          |
| Other ASIA                    | 317.7             | 12.7         | Other ASIA                    | 263.8             | 7.5          |
| <b>% of Total Apr Imports</b> | <b>37.5</b>       |              | <b>% of Total Mar Imports</b> | <b>43.0</b>       |              |
| <b>DUAL-SADC &amp; COMESA</b> | <b>623.9</b>      | <b>100.0</b> | <b>DUAL-SADC &amp; COMESA</b> | <b>489.8</b>      | <b>100.0</b> |
| Congo DR                      | 346.0             | 55.5         | Seychelles                    | 181.3             | 37.0         |
| Seychelles                    | 105.7             | 16.9         | Mauritius                     | 123.6             | 25.2         |
| Mauritius                     | 78.9              | 12.7         | Zimbabwe                      | 95.5              | 19.5         |
| Zimbabwe                      | 72.2              | 11.6         | Congo DR                      | 73.6              | 15.0         |
| Malawi                        | 20.8              | 3.3          | Malawi                        | 12.6              | 2.6          |
| Other DUAL-SADC & COMESA      | 0.3               | 0.0          | Other DUAL-SADC & COMESA      | 3.1               | 0.6          |
| <b>% of Total Apr Imports</b> | <b>9.3</b>        |              | <b>% of Total Mar Imports</b> | <b>6.0</b>        |              |
| <b>EUROPEAN UNION</b>         | <b>594.6</b>      | <b>100.0</b> | <b>EUROPEAN UNION</b>         | <b>582.1</b>      | <b>100.0</b> |
| United Kingdom                | 104.9             | 17.6         | United Kingdom                | 114.3             | 19.6         |
| France                        | 104.1             | 17.5         | Germany                       | 107.3             | 18.4         |
| Germany                       | 102.5             | 17.2         | Ireland                       | 53.5              | 9.2          |
| Sweden                        | 60.1              | 10.1         | Finland                       | 48.6              | 8.3          |
| Netherlands                   | 48.8              | 8.2          | Denmark                       | 43.9              | 7.5          |
| Other EU                      | 174.2             | 29.3         | Other EU                      | 212.9             | 36.6         |
| <b>% of Total Apr Imports</b> | <b>8.9</b>        |              | <b>% of Total Mar Imports</b> | <b>7.1</b>        |              |
| <b>COMESA Exclusive</b>       | <b>59.9</b>       | <b>100.0</b> | <b>COMESA Exclusive</b>       | <b>210.0</b>      | <b>100.0</b> |
| Kenya                         | 43.8              | 73.1         | Ethiopia                      | 143.7             | 68.4         |
| Egypt                         | 13.8              | 23.0         | Kenya                         | 42.9              | 20.4         |
| Uganda                        | 1.1               | 1.9          | Egypt                         | 15.9              | 7.6          |
| Ethiopia                      | 0.9               | 1.5          | Uganda                        | 7.5               | 3.6          |
| Burundi                       | 0.3               | 0.5          | Rwanda                        | 0.0               | 0.0          |
| Other COMESA Exclusive        | 0.0               | 0.0          | Other COMESA Exclusive        | 0.0               | 0.0          |
| <b>% of Total Apr Imports</b> | <b>0.9</b>        |              | <b>% of Total Mar Imports</b> | <b>2.6</b>        |              |
| Rest of the World             | 288.7             | 4.3          | Rest of the World             | 598.4             | 7.3          |
| <b>World</b>                  | <b>6,697.9</b>    | <b>100.0</b> | <b>World</b>                  | <b>8,170.8</b>    | <b>100.0</b> |

**Source:** ZamStats, International Trade Statistics, 2020

**Note:** (\*) Provisional  
(®) Revised figures



# 2019 LABOUR MARKET STATISTICS

## Labour Force

The Labour force refers to all persons aged 15 years or older who are either employed or unemployed at the time of the survey. In 2019, the labour force was estimated at 3,423,486

persons of which 63.2 percent were in urban areas while 36.8 percent were in rural areas (**see table 16**).

**Table 16: Number and Percentage Distribution of the Labour Force by Rural/Urban and Sex, Zambia 2019**

|       | Total     | Percent | Male      | Female    |
|-------|-----------|---------|-----------|-----------|
| Total | 3,423,486 | 100.0   | 2,059,965 | 1,363,521 |
| Rural | 1,259,910 | 36.8    | 797,355   | 462,555   |
| Urban | 2,163,576 | 63.2    | 1,262,610 | 900,966   |

Source: ZamStats, 2019 Labour Force Survey

## Employed Persons

The survey results further show that the employed population was estimated at 2,995,103, of which 63.7 percent were in the

urban areas and 36.3 percent were in rural areas (**see table 17**).

**Table 17: Number and Percentage Distribution of Employed Persons by Rural/Urban and Sex, Zambia 2019**

| Rural/Urban | Both Sexes |         | Male      |         | Female    |         |
|-------------|------------|---------|-----------|---------|-----------|---------|
|             | Number     | Percent | Number    | Percent | Number    | Percent |
| Total       | 2,995,103  | 100.0   | 1,811,243 | 100.0   | 1,183,860 | 100.0   |
| Rural       | 1,086,801  | 36.3    | 681,527   | 37.6    | 405,274   | 34.2    |
| Urban       | 1,908,302  | 63.7    | 1,129,716 | 62.4    | 778,586   | 65.8    |

Source: ZamStats, 2019 Labour Force Survey

## Formal and Informal Jobs in the Agriculture and Non-Agriculture Sector

Of the total 2,995,103 employed persons, 941,292 persons (31.4 percent) were formally employed while 2,053,811 (68.6 percent) were informally employed. The employed population comprised of those in the agriculture sector

(667,582 persons) and non-agriculture sector (2,327,521 persons). The formally employed persons in the agriculture sector accounted for 19.2 percent while the informally employed persons accounted for 80.8 percent. In the non-agriculture sector, the formally and informally employed persons accounted for 34.9 percent and 65.1 percent, respectively (**see table 18**).

**Table 18: Employed Persons by Type and Sector of Employment, Zambia 2019**

| Type of Employment  | Total Employed Persons |         | Agriculture Sector |         | Non Agriculture Sector |         |
|---------------------|------------------------|---------|--------------------|---------|------------------------|---------|
|                     | Number                 | Percent | Number             | Percent | Number                 | Percent |
| Total               | 2,995,103              | 98.8    | 667,582            | 100.0   | 2,327,521              | 100.0   |
| Formal Employment   | 941,292                | 31.4    | 128,472            | 19.2    | 812,821                | 34.9    |
| Informal Employment | 2,053,811              | 68.6    | 539,110            | 80.8    | 1,514,700              | 65.1    |

Source: ZamStats, 2019 Labour Force Survey

## Unemployed Population

In 2019, the total number of the unemployed persons was estimated at 428,383. Of the total unemployed persons, 40.4 percent were in rural

areas and 59.6 percent in urban areas (see table 19).

**Table 19: Number and Percent Distribution of Unemployed Persons by Rural/Urban and Sex, Zambia 2019**

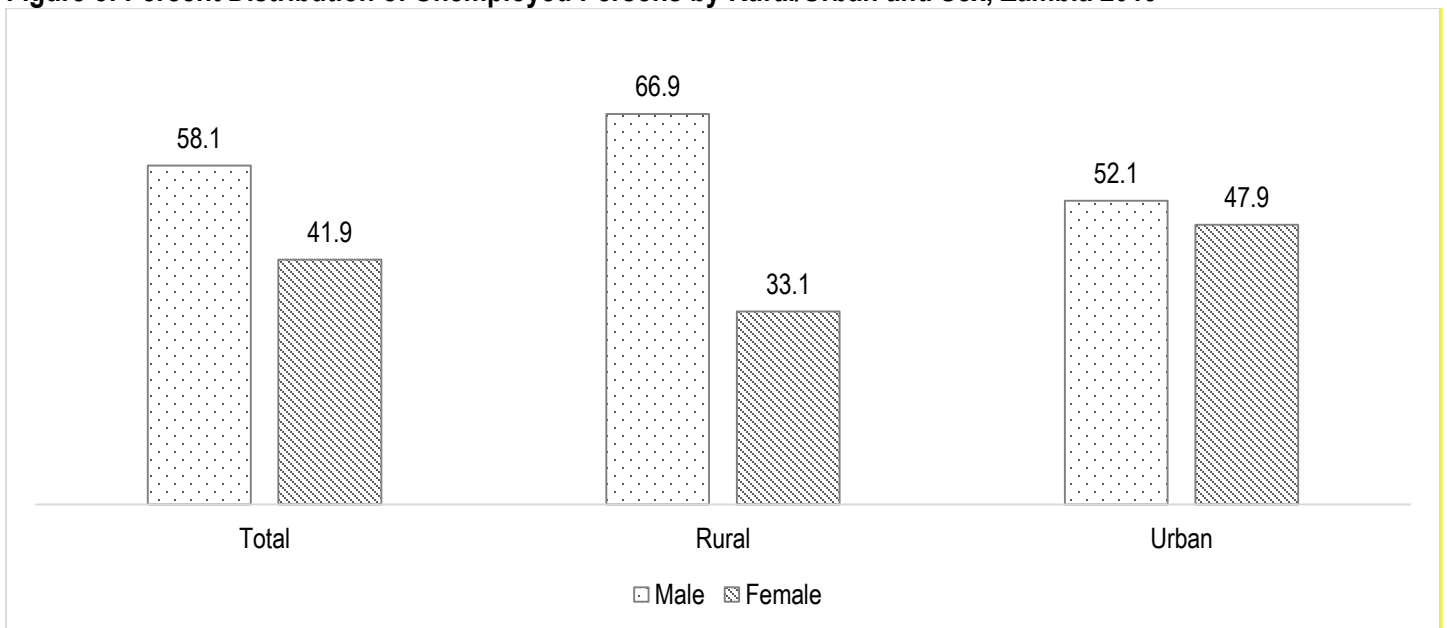
| Rural/Urban | Both Sexes | Percent | Male    | Female  |
|-------------|------------|---------|---------|---------|
| Total       | 428,383    | 100.0   | 248,722 | 179,661 |
| Rural       | 173,109    | 40.4    | 115,828 | 57,281  |
| Urban       | 255,274    | 59.6    | 132,894 | 122,380 |

Source: ZamStats, 2019 Labour Force Survey

Analysis by rural/urban and sex shows that of the unemployed persons 58.1 percent were males while 41.9 percent were females. In rural areas, males accounted for 66.9 percent and

females accounted for 33.1 percent of the unemployed persons. In urban areas, 52.1 percent of the unemployed persons were males while 47.9 percent were females (see figure 8).

**Figure 8: Percent Distribution of Unemployed Persons by Rural/Urban and Sex, Zambia 2019**



Source: ZamStats, 2019 Labour Force Survey

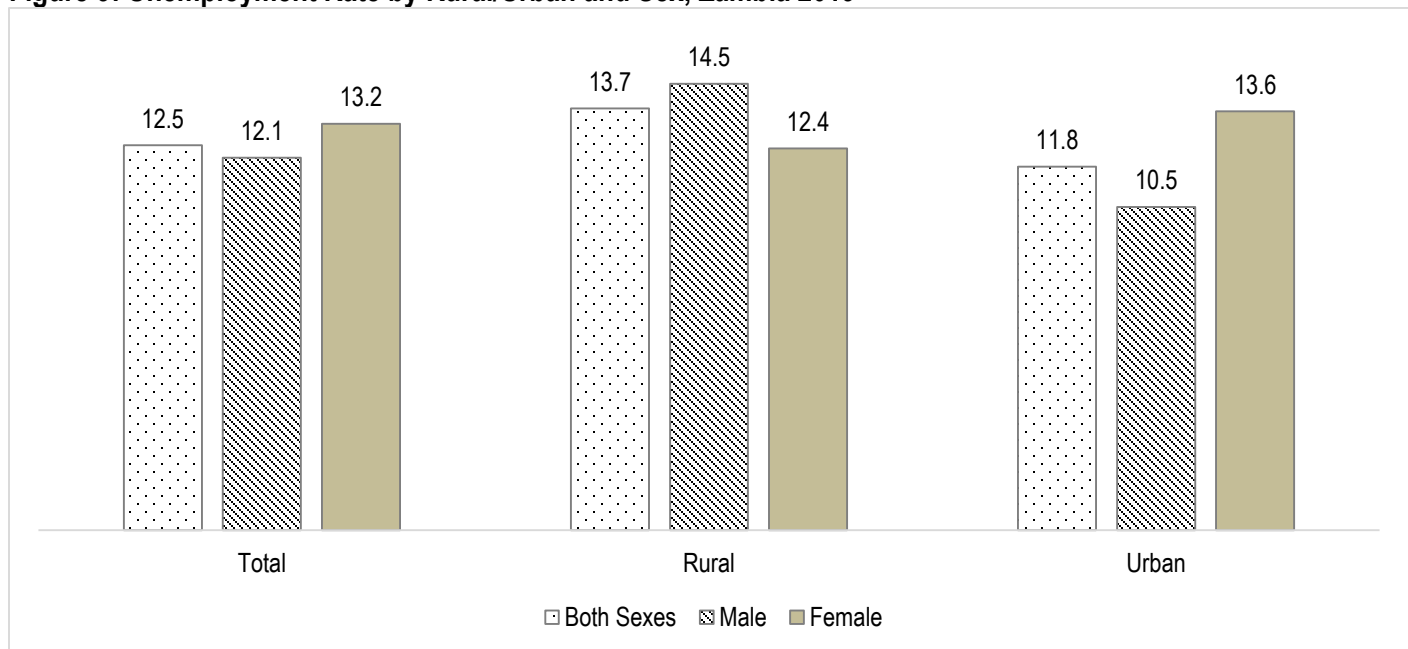
## Unemployment Rate

The unemployment rate is expressed as a percentage of the unemployed persons to the Labour force. The unemployment rate is a key indicator of the labour market. It is a measure that shows the extent the country's labour force is engaged in the economic activities.

In 2019, the unemployment rate was estimated at 12.5 percent. Unemployment rate was higher

in rural areas at 13.7 percent than in urban areas at 11.8 percent. Unemployment rate for females was estimated at 13.2 percent while that of males was estimated at 12.1 percent. Unemployment rate was higher among females than among males in urban areas while in rural areas it was higher for males (**see figure 9**).

**Figure 9: Unemployment Rate by Rural/Urban and Sex, Zambia 2019**



**Source:** ZamStats, 2019 Labour Force Survey

# HIGHLIGHTS OF THE 2019/2020 CROP FORECAST SURVEY

The Zambia Statistics Agency in conjunction with the Ministry of Agriculture conducted the Crop Forecasting Survey (CFS) during the months of March and May 2020. CFS is a nation-wide survey with the objective of providing Government with reliable, empirical annual estimates of crop production statistics for Agricultural Season.

Results from the survey show an increase in the production for most of the crops.

The following are the results of the survey for selected crops;

- The 2019/20 maize production is expected to increase to 3,387,470 metric tonnes from 2,004,389 metric tonnes produced last season. This represents an increase in production of 69.0 percent.
- Production of rice is expected to increase by 17.1 percent to 34,630 metric tonnes from 29,584 metric tonnes last season.

- Production of sorghum is expected to increase by 199.4 percent to 20,011 metric tonnes from 6,684 metric tonnes last season. The production of millet is also expected to increase by 81.2 percent to 45,005 metric tonnes from 24,843 metric tonnes last season.
- Production of soya beans is expected to increase by 5.5 percent to 296,866 metric tonnes from 281,389 metric tonnes last season.

However, the results also show that the production of groundnuts is forecasted to decrease by 2.8 percent from 130,825 metric tonnes in the last season to 127,172 metric tonnes. Further, the production of mixed beans is expected to decrease by 16.3 percent from 58,705 metric tonnes recorded in the last season to 49,163 metric tonnes in the 2019/2020 agricultural season **(see table 20)**.

**Table 20: A Comparison of the Crop Forecasting Survey Results for Selected Variables, 2018/2019 and 2019 /2020 Agricultural Seasons**

| Crop        | Area Planted/ Expected to be Planted |           | % Change | Quantity Expected to be Harvested |           | % Change | Yield Rate |         |
|-------------|--------------------------------------|-----------|----------|-----------------------------------|-----------|----------|------------|---------|
|             | 2018/19                              | 2019/20   |          | 2018/19                           | 2019/20   |          | 2018/19    | 2019/20 |
| Maize       | 1,557,314                            | 1,634,873 | 4.98     | 2,004,389                         | 3,387,470 | 69.0     | 1.3        | 2.1     |
| Sorghum     | 37,830                               | 51,860    | 37.09    | 6,684                             | 20,011    | 199.4    | 0.2        | 0.4     |
| Rice        | 48,893                               | 31,979    | (34.6)   | 29,584                            | 34,630    | 17.1     | 0.6        | 1.1     |
| Millet      | 45,206                               | 77,822    | 72.15    | 24,843                            | 45,005    | 81.2     | 0.5        | 0.6     |
| Sunflower   | 105,662                              | 107,673   | 1.90     | 34,208                            | 50,451    | 47.5     | 0.3        | 0.5     |
| Groundnuts  | 276,383                              | 215,401   | (22.1)   | 130,825                           | 127,172   | (2.8)    | 0.5        | 0.6     |
| Soya beans  | 237,601                              | 229,371   | (3.5)    | 281,389                           | 296,866   | 5.5      | 1.2        | 1.3     |
| Mixed beans | 100,279                              | 95,600    | (4.7)    | 58,705                            | 49,163    | (16.3)   | 0.6        | 0.5     |

## Ministry of Agriculture/Zambia Statistics Agency

### FOOD BALANCE SHEET 2020/2021 (Thousand Metric Tonnes)

POPULATION: 18,400,556

| Items                       | Supply     |                             |         |         |                  | Domestic Utilization |      |                  |     |        |        | Food Supply per caput |           |                     |                   |               |
|-----------------------------|------------|-----------------------------|---------|---------|------------------|----------------------|------|------------------|-----|--------|--------|-----------------------|-----------|---------------------|-------------------|---------------|
|                             | Production | Opening Stock as on 1st May | imports | exports | Available Supply | Feed                 | Seed | Food Manufacture | FRA | Waste  | Food   | Kg/Year               | Grams/day | Calories/Day number | Protein day grams | Fat day Grams |
|                             | 1          | 2                           | 3       | 4       | 5                | 6                    | 7    | 8                | 9   | 10     | 11     | 12                    | 13        | 14                  | 15                | 16            |
| <b>1. Cereals</b>           |            |                             |         |         |                  |                      |      |                  |     |        |        |                       |           |                     |                   |               |
| Maize                       | 3,387      | 475                         |         | 150     | 3,713            | 284                  | 45   | 2,928.84         | 300 | 154.51 |        |                       |           |                     |                   |               |
| Maize flour                 | 2,519      |                             |         |         | 2,519            |                      |      |                  |     | 125.94 | 2,393  | 130.04                | 356.28    | 1293.3              | 29.93             | 4.28          |
| Wheat                       | 192        | 129                         | 233     | 0       | 554              | 0                    | 0    | 537.55           |     | 16.05  |        |                       |           |                     |                   |               |
| Wheat Flour                 | 403        |                             |         |         | 403              | 0                    | 0    | 391.06           |     | 12.09  | 391    | 21.25                 | 58.23     | 211.9               | 6.35              | 0.64          |
| Rice, Milled                | 35         | 28                          | 45      | 0       | 107              | 0                    | 0    | 104.21           |     | 3.12   | 104    | 5.66                  | 15.52     | 55.9                | 1.04              | 0.11          |
| Sorghum                     | 20         |                             |         | 0       | 20               | 0                    | 1    | 18.01            |     | 1.00   | 19     | 1.03                  | 2.83      | 9.7                 | 0.29              | 0.09          |
| Millet                      | 45         | 1,487                       |         | 0       | 46               | 0                    | 2.5  | 41.67            |     | 2.32   | 44     | 2.40                  | 6.58      | 23.9                | 0.64              | 0.20          |
| <b>2. Root and Tubers</b>   |            |                             |         |         |                  |                      |      |                  |     |        |        |                       |           |                     |                   |               |
| Irish Potatoes              | 80         | -                           | 0       | 0       | 80               | -                    | -    | 75.98            |     | 4.00   | 75.98  | 4.13                  | 11.31     | 39.48               | 0.18              | 0.01          |
| Sweet Potatoes              | 45         | -                           | 0       | 0       | 145              | -                    | -    | 137.47           |     | 7.24   | 137.47 | 7.47                  | 20.47     | 18.83               | 0.33              | 0.02          |
| Cassava                     | 4,120      | 0                           | 0       | 0       | 4,120            | -                    | -    | 3,913.58         |     | 205.98 |        |                       |           |                     |                   |               |
| Cassava Flour               | 1,009      | 0                           | 0       | 0       | 1,009            | -                    | -    | 958.70           |     | 50.46  | 958.70 | 52.10                 | 142.74    | 482.48              | 2.14              | 0.86          |
| <b>3. Sugars and Syrups</b> |            |                             |         |         |                  |                      |      |                  |     |        |        |                       |           |                     |                   |               |
| Sugar, refined              | 495        |                             | 0       | 200     | 295              | -                    | -    | 295.00           |     |        | 295    | 16.03                 | 43.92     | 169.98              | 0.00              | 0.00          |
| <b>4. Pulses</b>            |            |                             |         |         |                  |                      |      |                  |     |        |        |                       |           |                     |                   |               |
| Mixed Beans                 | 49.2       | 17.0                        | -       | -       | 66.2             | -                    | -    | 62.9             |     | 3.3    | 62.9   | 3.4                   | 9.4       | 31.9                | 2.1               | 0.2           |
| Cow Peas                    | 10.3       | 0                           |         |         | 10.3             |                      |      | 10.1             |     | 0.2    | 10.1   | 0.6                   | 1.5       | 5.2                 | 0.4               | 0.0           |
| <b>5. Oil Crops</b>         |            |                             |         |         |                  |                      |      |                  |     |        |        |                       |           |                     |                   |               |
| Groundnuts                  | 127        | 1                           | 0       | 0       | 128              |                      | 30   | 91.30            |     | 6.38   | 121    | 6.6                   | 18.1      | 102.4               | 4.6               | 8.9           |
| Soya Beans                  | 297        | 31                          | 0       | 0       | 327              | 50                   | -    | 267.55           |     | 9.82   | 318    | 17.3                  | 47.3      | 158.4               | 18.0              | 8.5           |
| Sunflower                   | 50         | 0                           |         |         | 50               |                      |      | 49.44            |     | 1.01   | 49     | 2.7                   | 7.4       |                     |                   |               |
| <b>6. Meat</b>              |            |                             |         |         |                  |                      |      |                  |     |        |        |                       |           |                     |                   |               |
| Beef Meat                   | 200        | -                           | 0       | 0       | 200              | -                    | -    | 196.00           | 0   | 4.0    | 196.0  | 10.7                  | 29.2      | 43.8                | 5.4               | 2.3           |
| Cattle offal                | 20         | -                           | 0       | 0       | 20               | -                    | -    | 19.60            | 0   | 0.4    | 19.6   | 1.1                   | 2.9       | 3.1                 | 0.5               | 0.1           |
| Pigmeat                     | 89         | -                           | 0       | 0       | 89               | -                    | -    | 87.22            | 0   | 1.8    | 87.2   | 4.7                   | 13.0      | 28.6                | 1.7               | 2.3           |
| <b>7. Milk</b>              |            |                             |         |         |                  |                      |      |                  |     |        |        |                       |           |                     |                   |               |
| Cow Milk                    | 280        | -                           | 0       | 0       | 280              | -                    | -    | 271.6            | -   | 8.4    | 271.6  | 14.8                  | 40.4      | 24.7                | 13.3              | 13.3          |
| <b>8. Fish</b>              |            |                             |         |         |                  |                      |      |                  |     |        |        |                       |           |                     |                   |               |
| Freshwater Fish             | 130        | -                           | 119.069 | 1.057   | 248              | -                    | -    | 244.11           | 0   | 3.90   | 244.11 | 13.27                 | 36.35     | 3.96                | 11.99             | 0.91          |
| <b>9. Poultry</b>           |            |                             |         |         |                  |                      |      |                  |     |        |        |                       |           |                     |                   |               |
| Eggs                        | 54         | -                           |         |         | 54               | -                    | -    | 52.35            | 0   | 1.62   | 52.35  | 2.85                  | 7.80      | 10.84               | 2.57              | 0.19          |
| Poultry                     | 160        | -                           |         | 8       | 152              |                      |      | 147.20           |     | 4.80   | 147.20 | 8.00                  | 21.92     | 26.74               | 269.80            | 1.69          |
|                             |            |                             |         |         |                  |                      |      |                  |     |        |        |                       |           | 2,745.01            | 371.31            | 44.64         |



## **2020 CENSUS MAPPING AND LISTING UPDATE**

### **Central, Muchinga, Northern & Southern Provinces**

- Preparations for recruitment of enumerators for Southern, Central and Northern provinces has commenced.
- We are liaising with the Provincial Authorities for Muchinga through our regional office on the appropriate dates for recruitment given the heightened COVID - 19 cases.
- ZamStats has written to relevant authorities notifying them on the plans to commence mapping and listing in the four (4) provinces, with the view to comply with the set COVID Public Health Regulations and get assistance from local authorities during training of enumerators.

### **Copperbelt Province**

- Mapping and Listing in Masaiti and Lufwanyama which had been suspended due to Covid - 19 concerns is expected to resume this week following a go ahead by the respective District Officials.



# GET TO KNOW YOUR NEW STATISTICS ACT of 2018

**D**id you know that Zambia has a new statistics act???? Welcome to the Statistics Act Corner, initiated in order to help our readers, including all data producers and users to gain some insight on the new law governing statistics production and dissemination in Zambia. This sensitization on the new Act will run in a series of articles in this and the coming months.

## **What is the name of the new Act?**

*Statistics Act, No. 13 of 2018*

## **What is the name of old Act?**

*Census and Statistics Act, Cap 127 of 1964.*

## **When was the new Act enacted by Parliament?**

*On 26th December, 2018*

## **Is it already operational?**

*Yes, it is. This new Act came into effect with the signing of Statutory Instrument No. 60 of 2019 and the gazetting of the Commencement Order on 6th September 2019.*

## **What is the difference between the two?**

## **That's the big question and will be explored in phases.**

*But firstly, one major change is that the new Act is for the whole National Statistical System (NSS); unlike the old one which was mainly for the National Statistical Office (NSO) i.e. former Central Statistical Office, popularly known as “CSO”.*

## **So it is no longer CSO??? What exactly does the Act say about this and other changes?**

This is an Act to:

- *establish an integrated National Statistical System;*
- *provide for mechanisms for coordination, collection, management and dissemination of statistics;*
- *promote the use of statistical data and information at individual, institutional,*
- *national and international levels;*
- *re-constitute the Central Statistical Office as the Zambia Statistics Agency and define its functions;*

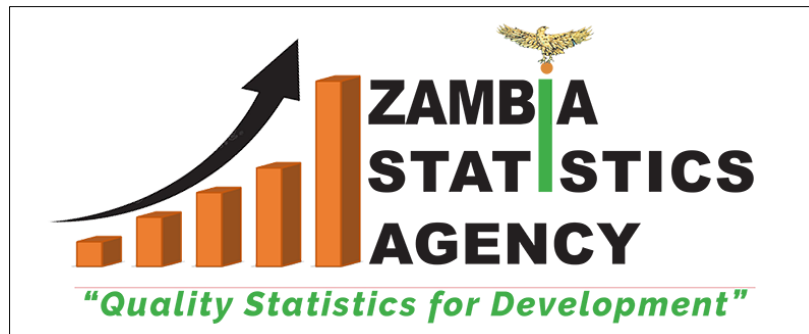
- *establish the Board of the Zambia Statistics Agency and define its functions;*
- *provide for the production and compilation of official statistics in a transparent and impartial manner;*
- *ensure the protection of personal data collected for statistical compilation purposes;*
- *build sustainable capacity for the production and use of statistical data and information for planning purposes;*
- *ensure coordination among statistical agencies;*
- *give effect to the United Nations Fundamental Principles of Official Statistics and Principles of the African Charter on Statistics;*
- *repeal the Census and Statistics Act 1955 and the Agricultural Statistics Act 1964; and*
- *to provide for matters connected with, or incidental to, the foregoing.*

### **It is a very comprehensive and forward looking Act, right? So, what has changed so far?**

*CSO is now Zambia Statistics Agency, or simply ZamStats.*

### **Does ZamStats have the same logo as CSO?**

*No, with this new name comes a new logo for the Agency, which was unveiled on African Statistics Day, 18th November 2019.*



In the next series, we shall get to know more about the aspects of the Act as shared above (in bullets).

You may visit our website: [www.zamstats.gov.zm](http://www.zamstats.gov.zm) to download your own copy of the New Statistics Act.

# ANNEXES

## ANNEX 1: CONSUMER PRICE INDEX

| Consumer Price Index - Food and Non-Food (National) |           |        |          |              |
|---|-----------|--------|----------|--------------|
| Period  | Month     | Total  | Food CPI | Non-Food CPI |
| Weight  |           | 1000.0 | 534.9    | 465.2        |
| 2017  | January   | 191.28 | 190.96   | 191.64       |
|   | February  | 193.12 | 193.28   | 192.94       |
|   | March     | 193.78 | 193.74   | 193.83       |
|   | April     | 194.48 | 194.09   | 194.93       |
|   | May       | 194.62 | 194.22   | 195.09       |
|   | June      | 195.82 | 193.61   | 198.37       |
|   | July      | 195.60 | 193.13   | 198.43       |
|   | August    | 195.75 | 193.32   | 198.53       |
|   | September | 196.33 | 193.06   | 200.10       |
|   | October   | 197.10 | 194.07   | 200.59       |
|   | November  | 199.84 | 195.62   | 204.69       |
|   | December  | 201.18 | 197.77   | 205.11       |
| 2018  | January   | 203.15 | 199.69   | 207.13       |
|   | February  | 204.91 | 202.14   | 208.09       |
|   | March     | 207.62 | 204.90   | 210.75       |
|   | April     | 208.93 | 206.80   | 211.38       |
|   | May       | 209.83 | 207.61   | 212.39       |
|   | June      | 210.35 | 208.21   | 212.81       |
|   | July      | 210.92 | 208.76   | 213.41       |
|   | August    | 211.52 | 209.39   | 213.97       |
|   | September | 211.93 | 209.57   | 214.64       |
|   | October   | 213.42 | 210.10   | 217.25       |
|   | November  | 215.37 | 212.13   | 219.09       |
|   | December  | 216.99 | 213.76   | 220.70       |
| 2019  | January   | 219.27 | 216.03   | 222.99       |
|   | February  | 220.88 | 217.70   | 224.53       |
|   | March     | 223.29 | 221.74   | 225.06       |
|   | April     | 224.92 | 224.03   | 225.94       |
|   | May       | 226.84 | 226.47   | 227.25       |
|   | June      | 228.54 | 227.34   | 229.87       |
|   | July      | 229.56 | 228.26   | 231.07       |
|   | August    | 231.27 | 230.95   | 231.63       |
|   | September | 234.08 | 235.59   | 232.35       |
|   | October   | 236.28 | 238.09   | 234.20       |
|   | November  | 238.64 | 240.77   | 236.20       |
|   | December  | 242.42 | 246.35   | 237.91       |
| 2020  | January   | 246.72 | 249.20   | 243.87       |
|   | February  | 251.51 | 252.41   | 250.48       |
|   | March     | 254.62 | 255.51   | 253.60       |
|   | April     | 260.25 | 262.20   | 258.01       |
|   | May       | 264.38 | 266.01   | 262.51       |

Source: ZamStats, Prices Statistics, 2020

Note: 2009 = 100

| Consumer Price Index by Division |           |                 |                                  |                                 |                       |   |   |             |              |               |                        |              |                      |                                  |
|----------------------------------|-----------|-----------------|----------------------------------|---------------------------------|-----------------------|---|---|-------------|--------------|---------------|------------------------|--------------|----------------------|----------------------------------|
| Period                           |           | All Items       | Food and Non-Alcoholic Beverages | Alcoholic Beverages and Tobacco | Clothing and Footwear | Housing, Water, Electricity, Gas, and Other Fuels | Furnishing, Household Equipment, Routine HseMtc | Health      | Transport    | Communication | Recreation and Culture | Education    | Restaurant and Hotel | Miscellaneous Goods and Services |
| <b>Weight:</b>                   |           | <b>1 000.00</b> | <b>534.85</b>                    | <b>15.21</b>                    | <b>80.78</b>          | <b>114.11</b>                                     | <b>82.36</b>                                    | <b>8.15</b> | <b>58.08</b> | <b>12.94</b>  | <b>13.84</b>           | <b>26.62</b> | <b>3.37</b>          | <b>49.69</b>                     |
| <b>2018</b>                      | January   | 203.15          | 199.69                           | 185.35                          | 212.94                | 225.43  | 204.73  | 189.23      | 211.09       | 128.35        | 194.98                 | 209.84       | 174.96               | 189.19                           |
|                                  | February  | 204.91          | 202.14                           | 185.91                          | 214.51                | 226.20  | 205.23  | 189.35      | 210.37       | 128.42        | 197.00                 | 213.06       | 175.37               | 191.41                           |
|                                  | March     | 207.62          | 204.90                           | 186.48                          | 215.72                | 228.94  | 206.67  | 188.94      | 222.32       | 128.42        | 194.25                 | 212.75       | 174.73               | 192.57                           |
|                                  | April     | 208.93          | 206.80                           | 187.40                          | 216.52                | 229.01  | 208.00  | 189.87      | 222.84       | 128.42        | 196.20                 | 212.81       | 175.53               | 193.16                           |
|                                  | May       | 209.83          | 207.61                           | 188.47                          | 217.10                | 229.52  | 208.80  | 190.72      | 226.78       | 129.57        | 195.42                 | 212.92       | 176.16               | 193.84                           |
|                                  | June      | 210.35          | 208.21                           | 189.23                          | 218.40                | 230.16  | 209.25  | 191.04      | 226.33       | 129.57        | 193.17                 | 212.92       | 176.76               | 194.35                           |
|                                  | July      | 210.92          | 208.76                           | 189.13                          | 219.08                | 230.82  | 209.93  | 191.50      | 227.08       | 130.37        | 193.55                 | 212.92       | 177.13               | 194.97                           |
|                                  | August    | 211.52          | 209.39                           | 190.01                          | 219.75                | 231.41  | 210.54  | 192.14      | 227.39       | 130.45        | 195.07                 | 212.91       | 177.82               | 195.45                           |
|                                  | September | 211.93          | 209.57                           | 190.59                          | 220.29                | 232.02  | 211.37  | 192.71      | 229.06       | 130.47        | 195.13                 | 212.98       | 178.11               | 195.76                           |
|                                  | October   | 213.42          | 210.10                           | 191.60                          | 221.15                | 234.52  | 211.85  | 193.70      | 241.75       | 130.56        | 196.42                 | 213.02       | 179.44               | 196.42                           |
|                                  | November  | 215.37          | 212.13                           | 193.50                          | 222.35                | 236.97  | 213.10  | 194.91      | 244.89       | 130.63        | 197.06                 | 213.02       | 180.15               | 199.32                           |
|                                  | December  | 216.99          | 213.76                           | 195.18                          | 224.24                | 237.74  | 214.65  | 196.12      | 247.74       | 130.65        | 200.12                 | 214.94       | 182.31               | 200.95                           |
| <b>2019</b>                      | January   | 219.27          | 216.03                           | 195.98                          | 226.41                | 239.06  | 215.97  | 196.58      | 251.30       | 130.65        | 202.00                 | 225.69       | 183.11               | 202.82                           |
|                                  | February  | 220.87          | 217.70                           | 196.74                          | 228.10                | 240.81  | 217.72  | 197.46      | 254.02       | 130.65        | 202.62                 | 225.70       | 183.61               | 203.72                           |
|                                  | March     | 223.29          | 221.74                           | 197.49                          | 229.01                | 241.16  | 218.20  | 200.98      | 253.65       | 130.66        | 202.79                 | 225.87       | 184.68               | 205.09                           |
|                                  | April     | 224.92          | 224.03                           | 198.28                          | 229.94                | 242.30  | 218.64  | 202.51      | 255.16       | 130.66        | 203.41                 | 225.87       | 187.03               | 205.87                           |
|                                  | May       | 226.84          | 226.47                           | 199.08                          | 230.98                | 243.34  | 219.90  | 203.07      | 259.73       | 130.66        | 204.32                 | 224.50       | 187.72               | 206.75                           |
|                                  | June      | 228.54          | 227.37                           | 200.78                          | 231.42                | 243.63  | 221.68  | 204.18      | 274.82       | 130.68        | 205.67                 | 224.65       | 188.26               | 208.11                           |
|                                  | July      | 229.56          | 228.26                           | 201.88                          | 233.07                | 244.55  | 222.95  | 205.09      | 275.91       | 131.49        | 208.18                 | 224.67       | 190.56               | 209.60                           |
|                                  | August    | 231.27          | 230.95                           | 202.95                          | 234.00                | 244.20  | 223.56  | 206.42      | 276.77       | 132.24        | 208.81                 | 225.79       | 191.22               | 210.58                           |
|                                  | September | 234.08          | 235.59                           | 204.35                          | 234.72                | 244.57  | 224.69  | 207.74      | 277.60       | 132.36        | 210.25                 | 225.79       | 192.39               | 211.25                           |
|                                  | October   | 236.28          | 238.09                           | 205.27                          | 235.81                | 246.99  | 226.83  | 208.69      | 281.74       | 132.37        | 210.79                 | 225.79       | 193.95               | 212.20                           |
|                                  | November  | 238.64          | 240.77                           | 207.31                          | 237.25                | 249.51  | 228.91  | 210.19      | 285.07       | 132.76        | 212.03                 | 225.79       | 194.46               | 214.10                           |
|                                  | December  | 242.42          | 246.35                           | 208.19                          | 238.43                | 250.41  | 230.33  | 211.40      | 291.29       | 132.76        | 213.07                 | 225.79       | 195.37               | 215.69                           |
| <b>2020</b>                      | January   | 246.72          | 249.20                           | 208.60                          | 239.26                | 267.80  | 232.52  | 212.42      | 298.08       | 132.76        | 214.61                 | 228.44       | 195.74               | 216.45                           |
|                                  | February  | 251.51          | 252.41                           | 209.87                          | 242.06                | 279.18  | 233.58  | 213.98      | 322.53       | 132.76        | 213.19                 | 228.40       | 196.52               | 217.02                           |
|                                  | March     | 254.62          | 255.51                           | 211.36                          | 243.22                | 283.20  | 235.38  | 216.10      | 332.20       | 132.76        | 216.13                 | 228.40       | 198.80               | 219.06                           |
|                                  | April     | 260.25          | 262.20                           | 214.62                          | 245.00                | 283.68  | 237.90  | 218.06      | 357.60       | 132.78        | 217.26                 | 228.41       | 201.03               | 220.63                           |
|                                  | May       | 264.38          | 266.01                           | 220.01                          | 248.04                | 286.57  | 246.00  | 225.44      | 361.98       | 133.63        | 220.74                 | 228.41       | 202.95               | 228.43                           |

Source: ZamStats, Prices Statistics, 2020

Note: 2009 = 100

| Consumer Price Indices and Annual Inflation |                |               |                       |
|---|----------------|---------------|-----------------------|
| Year  | Month          | Annual CPI    | Annual Inflation Rate |
| <b>2017</b>                                 | <b>January</b> | <b>191.28</b> | <b>7.0</b>            |
| 2017  | February       | 193.12        | 6.8                   |
| 2017  | March          | 193.74        | 6.7                   |
| 2017  | April          | 194.48        | 6.7                   |
| 2017  | May            | 194.62        | 6.5                   |
| 2017  | June           | 195.82        | 6.8                   |
| 2017  | July           | 195.60        | 6.6                   |
| 2017  | August         | 195.75        | 6.3                   |
| 2017  | September      | 196.33        | 6.6                   |
| 2017  | October        | 197.10        | 6.4                   |
| 2017  | November       | 199.84        | 6.3                   |
| 2017  | December       | 201.18        | 6.1                   |
| <b>2018</b>                                 | <b>January</b> | <b>203.15</b> | <b>6.2</b>            |
| 2018  | February       | 204.91        | 6.1                   |
| 2018  | March          | 207.62        | 7.1                   |
| 2018  | April          | 208.93        | 7.4                   |
| 2018  | May            | 209.03        | 7.8                   |
| 2018  | June           | 210.35        | 7.4                   |
| 2018  | July           | 210.92        | 7.8                   |
| 2018  | August         | 211.52        | 8.1                   |
| 2018  | September      | 211.93        | 7.9                   |
| 2018  | October        | 213.42        | 8.3                   |
| 2018  | November       | 215.37        | 7.8                   |
| 2018  | December       | 216.99        | 7.9                   |
| <b>2019</b>                                 | <b>January</b> | <b>219.27</b> | <b>7.9</b>            |
| 2019  | February       | 220.87        | 7.8                   |
| 2019  | March          | 223.29        | 7.5                   |
| 2019  | April          | 224.92        | 7.7                   |
| 2019  | May            | 226.84        | 8.1                   |
| 2019  | June           | 228.54        | 8.6                   |
| 2019  | July           | 229.56        | 8.8                   |
| 2019  | August         | 231.27        | 9.3                   |
| 2019  | September      | 234.08        | 10.5                  |
| 2019  | October        | 236.28        | 10.7                  |
| 2019  | November       | 238.64        | 10.8                  |
| 2019  | December       | 242.42        | 11.7                  |
| <b>2020</b>                                 | <b>January</b> | <b>246.72</b> | <b>12.5</b>           |
| 2020  | February       | 251.51        | 13.9                  |
| 2020  | March          | 254.62        | 14.0                  |
| 2020  | April          | 260.25        | 15.7                  |
| 2020  | May            | 264.38        | 16.6                  |

Source: ZamStats, Prices Statistics, 2020 ,Note: 2009 = 100

| Consumer Price Index by Province |          |         |            |         |         |        |          |               |          |         |
|----------------------------------|----------|---------|------------|---------|---------|--------|----------|---------------|----------|---------|
|                                  | Zambia   | Central | Copperbelt | Eastern | Luapula | Lusaka | Northern | North-western | Southern | Western |
| WEIGHT                           | 1,000.00 | 107.19  | 219.68     | 88.98   | 50.60   | 283.89 | 65.72    | 32.33         | 109.19   | 42.42   |
| Jan-17                           | 191.28   | 185.89  | 187.29     | 200.34  | 193.12  | 190.21 | 191.68   | 203.84        | 197.29   | 185.71  |
| Feb-17                           | 193.12   | 188.28  | 188.80     | 202.11  | 193.71  | 192.28 | 194.07   | 205.78        | 198.77   | 188.18  |
| Mar-17                           | 193.78   | 189.53  | 189.57     | 202.58  | 193.86  | 192.79 | 195.08   | 207.13        | 199.18   | 188.34  |
| Apr-17                           | 194.48   | 189.91  | 190.34     | 202.93  | 194.28  | 194.18 | 194.58   | 207.83        | 199.66   | 188.37  |
| May-17                           | 194.62   | 190.21  | 190.31     | 202.87  | 194.78  | 194.11 | 194.91   | 208.93        | 200.17   | 188.41  |
| Jun-17                           | 195.82   | 190.72  | 191.30     | 203.63  | 195.53  | 196.04 | 195.60   | 208.68        | 202.45   | 188.22  |
| Jul-17                           | 195.60   | 190.37  | 190.85     | 204.89  | 194.47  | 195.89 | 195.01   | 207.09        | 200.78   | 192.12  |
| Aug-17                           | 195.75   | 191.31  | 190.94     | 205.90  | 193.93  | 195.62 | 195.07   | 208.90        | 199.97   | 193.70  |
| Sep-17                           | 196.33   | 193.57  | 191.75     | 209.53  | 192.68  | 195.42 | 191.26   | 213.02        | 199.90   | 195.85  |
| Oct-17                           | 197.10   | 192.94  | 191.84     | 210.36  | 193.53  | 196.82 | 195.63   | 212.50        | 200.51   | 195.00  |
| Nov-17                           | 199.84   | 197.49  | 192.80     | 212.66  | 197.18  | 199.43 | 196.45   | 218.78        | 204.24   | 200.81  |
| Dec-17                           | 201.18   | 197.63  | 193.15     | 214.21  | 197.06  | 202.61 | 198.58   | 220.10        | 204.92   | 199.78  |
| Jan-18                           | 203.15   | 198.03  | 194.64     | 216.51  | 198.88  | 204.45 | 205.05   | 222.44        | 206.95   | 201.05  |
| Feb-18                           | 204.91   | 199.64  | 196.04     | 218.74  | 199.66  | 206.11 | 208.58   | 224.37        | 208.07   | 204.63  |
| Mar-18                           | 207.62   | 202.91  | 198.99     | 222.06  | 200.64  | 209.67 | 209.61   | 225.57        | 209.97   | 205.83  |
| Apr-18                           | 208.93   | 205.07  | 200.73     | 224.29  | 202.35  | 210.20 | 210.49   | 227.14        | 211.12   | 206.36  |
| May-18                           | 209.83   | 206.01  | 201.77     | 224.95  | 204.01  | 211.23 | 211.38   | 225.82        | 212.08   | 206.71  |
| Jun-18                           | 210.35   | 206.51  | 202.49     | 225.14  | 204.45  | 211.55 | 212.42   | 226.94        | 212.69   | 206.93  |
| Jul-18                           | 210.92   | 207.09  | 202.51     | 225.02  | 204.56  | 212.55 | 213.56   | 227.20        | 213.90   | 207.25  |
| Aug-18                           | 211.52   | 207.47  | 202.98     | 226.03  | 205.48  | 213.00 | 214.39   | 227.58        | 214.54   | 208.35  |
| Sep - 18                         | 211.93   | 207.72  | 203.15     | 226.70  | 205.74  | 213.49 | 214.66   | 228.06        | 214.95   | 209.70  |
| Oct - 18                         | 213.42   | 209.44  | 204.87     | 228.20  | 206.79  | 215.09 | 215.69   | 229.79        | 215.36   | 212.54  |
| Nov-18                           | 215.37   | 210.35  | 206.56     | 230.85  | 208.89  | 217.60 | 217.64   | 232.16        | 217.00   | 213.35  |
| Dec-18                           | 216.99   | 212.26  | 207.84     | 232.82  | 209.78  | 219.35 | 219.10   | 232.71        | 219.29   | 214.66  |
| Jan-19                           | 219.27   | 213.60  | 210.62     | 235.23  | 211.81  | 221.69 | 221.31   | 234.61        | 221.07   | 218.05  |
| Feb-19                           | 220.87   | 214.93  | 213.42     | 236.47  | 214.85  | 222.83 | 221.63   | 235.83        | 221.72   | 221.11  |
| Mar-19                           | 223.29   | 215.91  | 214.99     | 241.52  | 216.52  | 224.77 | 222.67   | 238.95        | 227.34   | 223.39  |
| Apr-19                           | 224.92   | 217.55  | 216.08     | 243.06  | 217.66  | 227.00 | 224.20   | 239.86        | 229.49   | 223.91  |
| May-19                           | 226.84   | 220.11  | 217.80     | 243.35  | 218.81  | 229.09 | 226.44   | 242.51        | 231.87   | 226.15  |
| Jun-19                           | 228.54   | 222.37  | 219.37     | 244.16  | 219.32  | 231.30 | 228.38   | 243.80        | 233.44   | 227.26  |
| Jul-19                           | 229.56   | 223.48  | 220.83     | 244.67  | 220.43  | 232.36 | 228.76   | 245.20        | 233.96   | 228.72  |
| Aug-19                           | 231.27   | 227.84  | 221.62     | 248.30  | 222.40  | 233.34 | 231.12   | 245.63        | 235.08   | 230.33  |
| Sep-19                           | 234.08   | 228.77  | 223.42     | 251.14  | 224.73  | 237.90 | 233.86   | 248.09        | 237.54   | 233.27  |
| Oct-19                           | 236.28   | 230.16  | 225.22     | 253.90  | 227.75  | 240.10 | 236.43   | 249.18        | 240.27   | 236.42  |
| Nov-19                           | 238.64   | 232.00  | 227.87     | 255.90  | 230.95  | 242.45 | 238.54   | 251.97        | 242.94   | 237.73  |
| Dec-19                           | 242.42   | 234.70  | 229.75     | 257.59  | 234.82  | 246.79 | 245.39   | 254.57        | 251.55   | 238.27  |
| Jan - 20                         | 246.72   | 236.79  | 236.24     | 263.14  | 238.21  | 251.28 | 248.06   | 257.49        | 255.37   | 238.78  |
| Feb-20                           | 251.51   | 242.84  | 239.74     | 264.48  | 243.42  | 258.57 | 253.02   | 262.95        | 258.58   | 240.34  |
| Mar-20                           | 254.62   | 246.03  | 240.80     | 269.44  | 245.96  | 262.45 | 257.92   | 267.31        | 260.68   | 244.41  |
| Apr-20                           | 260.25   | 252.03  | 248.34     | 272.38  | 250.44  | 268.15 | 262.86   | 273.61        | 265.06   | 249.56  |
| May-20                           | 264.38   | 259.46  | 253.28     | 272.51  | 251.12  | 271.42 | 272.66   | 274.82        | 265.99   | 260.99  |

Source: ZamStats, Prices Statistics, 2020. Note: 2009 = 100

## ANNEX 2: INTERNATIONAL MERCHANDISE TRADE

| Traditional and Non-Traditional Exports (K' Million) - January 2020 to April 2020 |                 |                |                     |
|---|-----------------|----------------|---------------------|
| PERIOD  | TE's            | NTE's          | TOTAL EXPORTS (fob) |
| Jan-20®   | 6,210.2         | 2,111.3        | 8,321.6             |
| Feb-20®   | 5,626.0         | 2,328.2        | 7,954.2             |
| Mar-20®   | 6,401.0         | 2,129.1        | 8,530.2             |
| <b>Quarter1</b>   | <b>18,237.2</b> | <b>6,568.7</b> | <b>24,805.9</b>     |
| Apr-20*   | 7,045.5         | 1,884.0        | 8,929.5             |
| <b>Total:</b>   | <b>25,282.7</b> | <b>8,452.7</b> | <b>33,735.4</b>     |

| Total Exports by Selected Regional Groupings,(K' Million) - January 2020 to April 2020 |                 |              |              |                |
|--|-----------------|--------------|--------------|----------------|
| PERIOD   | ASIA            | COMESA       | EU           | SADC           |
| Jan-20®  | 3,060.9         | 84.6         | 143.7        | 1,373.0        |
| Feb-20®  | 2,856.1         | 80.2         | 122.2        | 1,754.1        |
| Mar-20®  | 2,979.1         | 91.4         | 116.4        | 1,961.4        |
| <b>Quarter1</b>  | <b>8,896.1</b>  | <b>256.2</b> | <b>382.3</b> | <b>5,088.5</b> |
| Apr-20*  | 3,489.5         | 60.5         | 254.1        | 1,933.2        |
| <b>Total:</b>  | <b>12,385.6</b> | <b>316.7</b> | <b>636.4</b> | <b>7,021.7</b> |

| Total Exports by Product Category, (K' Million) - January 2020 to April 2020 |                |                |                    |               |                     |
|--|----------------|----------------|--------------------|---------------|---------------------|
| PERIOD   | CONSUMER GOODS | RAW MATERIALS  | INTERMEDIATE GOODS | CAPITAL GOODS | TOTAL EXPORTS (fob) |
| Jan-20®  | 632.3          | 380.0          | 7,140.4            | 168.9         | 8,321.6             |
| Feb-20®  | 828.8          | 497.3          | 6,434.3            | 193.8         | 7,954.2             |
| Mar-20®  | 587.0          | 541.2          | 7,175.7            | 226.3         | 8,530.2             |
| <b>Quarter1</b>  | <b>2,048.1</b> | <b>1,418.5</b> | <b>20,750.3</b>    | <b>589.0</b>  | <b>24,805.9</b>     |
| Apr-20*  | 477.1          | 497.0          | 7,718.7            | 236.7         | 8,929.5             |
| <b>Total:</b>  | <b>2,525.2</b> | <b>1,915.5</b> | <b>28,469.0</b>    | <b>825.7</b>  | <b>33,735.4</b>     |

**Total Exports by Mode of Transport, K' Million and Tonnes - January 2020 to April 2020**

| PERIOD          | ROAD TRANSPORT    |                    | RAIL TRANSPORT    |                 | AIR TRANSPORT     |                | OTHER             |                  | TOTAL EXPORTS (fob) |                    |
|-----------------|-------------------|--------------------|-------------------|-----------------|-------------------|----------------|-------------------|------------------|---------------------|--------------------|
|                 | Value (K'Million) | Tonnes             | Value (K'Million) | Tonnes          | Value (K'Million) | Tonnes         | Value (K'Million) | Tonnes           | Value (K'Million)   | Tonnes             |
| Jan-20@         | 6,120.9           | 329,181.4          | 450.8             | 5,096.7         | 417.2             | 445.7          | 1,332.7           | 124,642.2        | 8,321.6             | 459,366.1          |
| Feb-20@         | 5,459.5           | 316,965.1          | 444.1             | 5,164.7         | 339.6             | 517.1          | 1,711.0           | 131,172.9        | 7,954.2             | 453,819.8          |
| Mar-20@         | 5,914.1           | 341,928.3          | 700.2             | 8,399.8         | 114.7             | 361.0          | 1,801.2           | 159,831.6        | 8,530.2             | 510,520.8          |
| <b>Quarter1</b> | <b>17,494.5</b>   | <b>988,074.8</b>   | <b>1,595.1</b>    | <b>18,661.2</b> | <b>871.4</b>      | <b>1,323.8</b> | <b>4,844.9</b>    | <b>415,646.8</b> | <b>24,805.9</b>     | <b>1,423,706.6</b> |
| Apr-20*         | 5,869.6           | 316,899.7          | 794.3             | 9,187.1         | 35.2              | 268.8          | 2,230.4           | 155,963.3        | 8,929.5             | 482,318.9          |
| <b>Total:</b>   | <b>23,364.1</b>   | <b>1,304,974.5</b> | <b>2,389.4</b>    | <b>27,848.4</b> | <b>906.7</b>      | <b>1,592.6</b> | <b>7,075.3</b>    | <b>571,610.1</b> | <b>33,735.4</b>     | <b>1,906,025.5</b> |

**Imports by Regional Groupings, (K' Million) - January 2020 to April 2020**

| PERIOD          | ASIA            | COMESA       | EU             | SADC            |
|-----------------|-----------------|--------------|----------------|-----------------|
| Jan-20@         | 2,513.1         | 54.4         | 539.4          | 2,692.7         |
| Feb-20@         | 4,273.5         | 54.7         | 461.3          | 2,859.7         |
| Mar-20@         | 3,512.5         | 210.0        | 582.1          | 3,267.8         |
| <b>Quarter1</b> | <b>10,299.1</b> | <b>319.1</b> | <b>1,582.9</b> | <b>8,820.2</b>  |
| Apr-20*         | 2,511.5         | 59.9         | 594.6          | 3,243.1         |
| <b>Total:</b>   | <b>12,810.6</b> | <b>379.0</b> | <b>2,177.5</b> | <b>12,063.3</b> |

**Import Trade by Product Category, (K Million) - January 2020 to April 2020**

| PERIOD          | CONSUMER GOODS  | RAW MATERIALS  | INTERMEDIATE GOODS | CAPITAL GOODS   | IMPORTS (cif)   |
|-----------------|-----------------|----------------|--------------------|-----------------|-----------------|
| Jan-20@         | 2,072.9         | 332.6          | 1,278.3            | 2,340.4         | 6,024.3         |
| Feb-20@         | 3,272.4         | 297.2          | 1,456.9            | 2,931.7         | 7,958.2         |
| Mar-20@         | 3,498.0         | 416.9          | 1,727.0            | 2,528.8         | 8,170.8         |
| <b>Quarter1</b> | <b>8,843.4</b>  | <b>1,046.7</b> | <b>4,462.2</b>     | <b>7,801.0</b>  | <b>22,153.3</b> |
| Apr-20*         | 1,916.1         | 429.9          | 1,376.5            | 2,975.4         | 6,697.9         |
| <b>Total:</b>   | <b>10,759.5</b> | <b>1,476.6</b> | <b>5,838.7</b>     | <b>10,776.4</b> | <b>28,851.2</b> |

**Imports by Mode of Transport in K' Million and Tonnes - January 2020 to April 2020**

| PERIOD          | ROAD TRANSPORT    |                  | RAIL TRANSPORT    |                 | AIR TRANSPORT     |                | OTHER             |                  | IMPORTS (cif)     |                    |
|-----------------|-------------------|------------------|-------------------|-----------------|-------------------|----------------|-------------------|------------------|-------------------|--------------------|
|                 | Value (K'Million) | Tonnes           | Value (K'Million) | Tonnes          | Value (K'Million) | Tonnes         | Value (K'Million) | Tonnes           | Value (K'Million) | Tonnes             |
| Jan-20@         | 3,041.5           | 273,062.3        | 49.4              | 13,292.2        | 423.0             | 725.2          | 2,510.4           | 153,149.1        | 6,024.3           | 440,228.9          |
| Feb-20@         | 3,497.2           | 259,585.5        | 49.2              | 13,400.8        | 481.0             | 609.4          | 3,930.8           | 177,832.0        | 7,958.2           | 451,427.7          |
| Mar-20@         | 3,994.2           | 238,518.0        | 322.0             | 12,674.7        | 613.6             | 527.1          | 3,241.0           | 182,129.0        | 8,170.8           | 433,848.8          |
| <b>Quarter1</b> | <b>10,532.8</b>   | <b>771,165.8</b> | <b>420.6</b>      | <b>39,367.7</b> | <b>1,517.6</b>    | <b>1,861.7</b> | <b>9,682.3</b>    | <b>513,110.2</b> | <b>22,153.3</b>   | <b>1,325,505.4</b> |
| Apr-20*         | 3,619.0           | 189,268.7        | 90.4              | 18,357.3        | 596.7             | 611.6          | 2,391.8           | 137,838.8        | 6,697.9           | 346,076.4          |
| <b>Total:</b>   | <b>14,151.8</b>   | <b>960,434.6</b> | <b>511.0</b>      | <b>57,724.9</b> | <b>2,114.3</b>    | <b>2,473.3</b> | <b>12,074.1</b>   | <b>650,949.0</b> | <b>28,851.2</b>   | <b>1,671,581.8</b> |



| Zambia's Trade Flows In Absolute US \$ and Zambia Kwacha (ZMW) - 2000 to April 2020 |          |                |                  |               |                |                  |
|---|----------|----------------|------------------|---------------|----------------|------------------|
| Flow Year   | Currency | Total Exports  | Domestic Exports | Re-Exports    | Imports        | Trade Balance    |
|   |          | (fob)          | (fob)            | (fob)         | (cif)          |                  |
| 2000  | ZMW      | 2,716,557,648  | 2,680,166,733    | 36,390,915    | 2,751,563,200  | (35,005,551)     |
|   | US \$    | 869,485,416    | 857,837,819      | 11,647,597    | 871,386,492    | (1,901,076)      |
| 2001  | ZMW      | 3,537,206,913  | 3,523,388,831    | 13,818,083    | 3,900,496,869  | (363,289,956)    |
|   | US \$    | 978,788,277    | 974,964,645      | 3,823,632     | 1,079,955,769  | (101,167,492)    |
| 2002  | ZMW      | 4,069,916,925  | 4,045,881,105    | 24,035,820    | 4,732,881,915  | (662,964,990)    |
|   | US \$    | 944,356,533    | 938,779,421      | 5,577,112     | 1,103,070,912  | (158,714,379)    |
| 2003  | ZMW      | 4,642,039,643  | 4,614,120,921    | 27,918,722    | 7,439,867,257  | (2,797,827,613)  |
|   | US \$    | 979,298,782    | 973,408,964      | 5,889,818     | 1,573,309,968  | (594,011,186)    |
| 2004  | ZMW      | 7,526,280,116  | 7,460,407,702    | 65,872,413    | 10,279,302,826 | (2,753,022,711)  |
|   | US \$    | 1,577,240,766  | 1,563,436,250    | 13,804,516    | 2,150,649,040  | (573,408,274)    |
| 2005  | ZMW      | 9,612,909,461  | 9,564,984,513    | 47,924,948    | 11,466,668,653 | (1,853,759,192)  |
|   | US \$    | 2,176,641,598  | 2,165,790,000    | 10,851,599    | 2,579,688,391  | (403,046,793)    |
| 2006  | ZMW      | 13,410,945,234 | 13,388,136,276   | 22,808,958    | 11,049,770,813 | 2,361,174,421    |
|   | US \$    | 3,681,524,702  | 3,675,263,268    | 6,261,434     | 3,023,996,472  | 657,528,230      |
| 2007  | ZMW      | 18,399,133,746 | 18,301,278,319   | 97,855,427    | 15,945,289,848 | 2,453,843,898    |
|   | US \$    | 4,617,454,325  | 4,592,896,486    | 24,557,839    | 4,006,980,387  | 610,473,937      |
| 2008  | ZMW      | 18,653,009,287 | 17,951,197,614   | 701,811,673   | 18,476,489,240 | 176,520,047      |
|   | US \$    | 5,098,688,004  | 4,906,852,001    | 191,836,004   | 5,060,482,666  | 38,205,339       |
| 2009  | ZMW      | 21,364,760,204 | 20,312,466,565   | 1,052,293,640 | 18,941,137,479 | 2,423,622,726    |
|   | US \$    | 4,312,054,540  | 4,099,669,869    | 212,384,671   | 3,792,642,675  | 519,411,865      |
| 2010  | ZMW      | 34,500,051,458 | 32,876,095,550   | 1,623,955,908 | 25,507,487,313 | 8,992,564,145    |
|   | US \$    | 7,200,951,149  | 6,861,994,346    | 338,956,803   | 5,321,002,628  | 1,879,948,521    |
| 2011  | ZMW      | 42,915,038,551 | 37,914,339,432   | 5,000,699,119 | 35,440,939,196 | 7,474,099,356    |
|   | US \$    | 8,829,248,544  | 7,800,415,368    | 1,028,833,176 | 7,279,139,877  | 1,550,108,667    |
| 2012  | ZMW      | 48,206,165,818 | 44,580,859,222   | 3,625,306,596 | 45,275,938,876 | 2,930,226,942    |
|   | US \$    | 9,639,652,576  | 8,914,485,088    | 725,167,489   | 8,806,150,488  | 833,502,088      |
| 2013  | ZMW      | 57,175,978,211 | 50,496,013,867   | 6,679,964,344 | 56,885,181,848 | 290,796,363      |
|   | US \$    | 10,606,851,477 | 9,365,214,643    | 1,241,636,834 | 10,572,652,155 | 34,199,322       |
| 2014  | ZMW      | 59,613,355,205 | 49,682,504,161   | 9,930,851,044 | 61,091,749,114 | (1,478,393,909)  |
|   | US \$    | 9,686,603,336  | 8,076,837,897    | 1,609,765,438 | 9,794,680,938  | (108,077,602)    |
| 2015  | ZMW      | 56,672,891,785 | 55,394,919,541   | 1,277,972,244 | 68,482,533,768 | (11,809,641,984) |
|   | US \$    | 6,606,512,648  | 6,460,532,542    | 145,980,105   | 7,935,278,442  | (1,328,765,794)  |
| 2016  | ZMW      | 65,751,570,990 | 64,083,696,137   | 1,667,874,852 | 75,140,829,741 | (9,389,258,752)  |
|   | US \$    | 6,372,386,801  | 6,211,948,874    | 160,437,927   | 7,289,685,194  | (917,298,393)    |
| 2017  | ZMW      | 76,488,822,767 | 75,294,348,477   | 1,194,474,289 | 76,180,677,945 | 308,144,821      |
|   | US \$    | 8,006,455,597  | 7,881,283,801    | 125,171,796   | 7,987,876,362  | 18,579,234       |
| 2018  | ZMW      | 94,398,726,001 | 92,451,199,605   | 1,947,526,396 | 99,294,475,397 | (4,895,749,397)  |
|   | US \$    | 9,034,663,909  | 8,849,042,255    | 185,621,654   | 9,465,882,557  | (431,218,648)    |
| 2019  | ZMW      | 90,740,260,459 | 88,012,952,312   | 2,727,308,147 | 93,078,525,660 | (2,338,265,201)  |
|   | US \$    | 7,047,213,456  | 6,835,870,576    | 211,342,881   | 7,224,975,774  | (177,762,317)    |
| 2020-JAN-APR  | ZMW      | 33,735,412,038 | 32,849,813,486   | 885,598,551   | 28,851,154,038 | 4,884,258,000    |
|   | US \$    | 2,100,604,540  | 2,045,257,965    | 55,346,576    | 1,817,201,795  | 283,402,745      |

| Zambia's Annual Exports by Top 25 Trading Partners in Million ZMW/USD, 2014 to April 2020 |                 |                |                 |                |                 |                |                 |                |                 |                |                 |                |                 |                |                  |
|---|-----------------|----------------|-----------------|----------------|-----------------|----------------|-----------------|----------------|-----------------|----------------|-----------------|----------------|-----------------|----------------|------------------|
| Year  | 2014            |                | 2015            |                | 2016            |                | 2017            |                | 2018            |                | 2019            |                | 2020-JAN-APR    |                | Total            |
| Country   | ZMW (FOB)       | USD (FOB)      | ZMW (FOB)       | USD (FOB)      | ZMW (FOB)       | USD (FOB)      | ZMW (FOB)       | USD (FOB)      | ZMW (FOB)       | USD (FOB)      | ZMW (FOB)       | USD (FOB)      | ZMW (FOB)       | USD (FOB)      |                  |
| SWITZERLAND   | 26,635.6        | 4,320.4        | 24,262.0        | 2,783.3        | 25,586.5        | 2,485.5        | 33,911.7        | 3,543.3        | 39,717.5        | 3,800.1        | 37,324.7        | 2,905.4        | 13,167.3        | 824.4          | 200,605.4        |
| CHINA   | 11,012.4        | 1,794.1        | 8,217.0         | 993.2          | 12,466.2        | 1,209.0        | 12,686.6        | 1,329.6        | 13,641.8        | 1,307.8        | 19,386.3        | 1,502.7        | 7,758.7         | 482.5          | 85,168.9         |
| CONGO DR  | 4,922.6         | 802.9          | 4,466.7         | 526.0          | 4,348.5         | 428.6          | 5,149.3         | 544.1          | 9,080.9         | 863.7          | 11,770.8        | 911.6          | 4,923.7         | 303.2          | 44,662.5         |
| SINGAPORE   | 2,287.7         | 370.7          | 4,521.7         | 550.3          | 3,781.8         | 369.8          | 4,730.2         | 495.1          | 7,496.0         | 699.7          | 7,590.6         | 587.8          | 3,919.2         | 241.5          | 34,327.2         |
| SOUTH AFRICA  | 4,148.4         | 676.8          | 4,183.5         | 500.3          | 3,909.2         | 364.9          | 3,714.9         | 393.3          | 4,516.9         | 435.8          | 3,843.2         | 295.7          | 687.6           | 44.4           | 25,003.6         |
| UNITED ARAB EMIRATES  | 1,421.0         | 235.0          | 539.3           | 57.8           | 3,568.7         | 351.3          | 2,824.0         | 293.6          | 2,422.1         | 236.5          | 592.8           | 47.6           | 41.9            | 2.6            | 11,409.9         |
| ZIMBABWE  | 1,202.6         | 195.3          | 2,373.2         | 268.4          | 2,349.1         | 227.2          | 1,276.9         | 134.0          | 1,423.2         | 136.2          | 1,270.5         | 99.7           | 356.1           | 22.7           | 10,251.6         |
| UNITED KINGDOM  | 601.8           | 98.5           | 661.5           | 66.5           | 2,549.7         | 240.0          | 1,770.0         | 184.5          | 3,708.6         | 352.9          | 402.2           | 32.6           | 16.4            | 1.1            | 9,710.3          |
| MALAWI  | 909.2           | 145.6          | 927.3           | 107.7          | 1,251.7         | 122.5          | 938.5           | 99.4           | 884.6           | 84.8           | 1,343.9         | 103.9          | 309.9           | 18.9           | 6,565.0          |
| HONG KONG   | 219.0           | 34.6           | 864.3           | 103.6          | 1,027.5         | 100.8          | 1,374.5         | 145.5          | 1,446.1         | 142.3          | 985.3           | 75.8           | 314.4           | 20.1           | 6,231.2          |
| INDIA   | 219.3           | 36.2           | 242.8           | 22.9           | 713.6           | 70.6           | 1,698.2         | 175.9          | 1,962.4         | 185.9          | 715.4           | 54.6           | 297.0           | 19.4           | 5,848.7          |
| UNKNOWN FINAL DESTINATION   | 0.0             | 0.0            | 0.0             | 0.0            | 0.0             | 0.0            | 2,143.5         | 219.9          | 3,171.8         | 324.7          | 47.3            | 3.9            | 0.0             | 0.0            | 5,362.7          |
| TANZANIA  | 327.7           | 53.3           | 427.3           | 45.6           | 926.4           | 86.0           | 855.2           | 89.9           | 871.1           | 80.1           | 800.1           | 61.1           | 252.5           | 15.7           | 4,460.3          |
| AUSTRALIA   | 2,146.5         | 348.2          | 1,793.3         | 210.4          | 7.3             | 0.7            | 8.9             | 0.9            | 73.8            | 7.3            | 13.8            | 1.0            | 5.7             | 0.4            | 4,049.4          |
| KENYA   | 348.9           | 56.6           | 351.0           | 40.5           | 402.2           | 38.9           | 688.2           | 72.5           | 625.2           | 60.1           | 813.7           | 63.3           | 105.0           | 6.7            | 3,334.2          |
| LUXEMBOURG  | 294.4           | 49.5           | 50.5            | 5.6            | 146.8           | 14.7           | 498.6           | 52.2           | 838.2           | 76.6           | 835.8           | 66.7           | 364.1           | 21.7           | 3,028.3          |
| JAPAN   | 489.4           | 79.6           | 676.5           | 82.2           | 525.9           | 50.6           | 315.2           | 33.2           | 261.7           | 25.5           | 183.8           | 14.9           | 8.7             | 0.6            | 2,461.2          |
| NAMIBIA   | 319.1           | 51.5           | 291.6           | 34.6           | 244.3           | 24.7           | 240.7           | 25.8           | 359.8           | 34.5           | 547.6           | 42.2           | 284.5           | 17.5           | 2,287.6          |
| BOTSWANA  | 269.0           | 43.3           | 263.7           | 30.4           | 230.2           | 22.3           | 291.7           | 30.4           | 328.9           | 31.4           | 399.8           | 31.1           | 117.1           | 7.4            | 1,900.6          |
| MOZAMBIQUE  | 298.9           | 47.2           | 166.9           | 20.1           | 207.4           | 20.2           | 169.4           | 17.7           | 131.7           | 12.6           | 228.9           | 17.9           | 44.2            | 2.7            | 1,247.4          |
| GERMANY   | 203.3           | 32.5           | 192.6           | 23.5           | 349.3           | 32.2           | 92.3            | 9.5            | 187.6           | 17.6           | 153.4           | 11.9           | 56.4            | 3.5            | 1,234.9          |
| RWANDA  | 34.5            | 5.6            | 35.2            | 3.8            | 274.0           | 26.7           | 321.0           | 33.7           | 206.0           | 19.4           | 170.4           | 13.3           | 51.2            | 3.3            | 1,092.2          |
| BURUNDI   | 37.0            | 6.0            | 37.3            | 4.5            | 119.4           | 11.7           | 231.7           | 24.3           | 214.4           | 20.4           | 291.9           | 22.7           | 130.9           | 8.1            | 1,062.6          |
| NETHERLANDS   | 56.8            | 9.2            | 75.9            | 9.1            | 138.4           | 13.1           | 100.2           | 10.4           | 61.8            | 5.9            | 102.4           | 8.0            | 34.1            | 2.2            | 569.5            |
| MAURITIUS   | 221.7           | 35.1           | 71.8            | 9.0            | 78.8            | 7.8            | 10.4            | 1.1            | 24.1            | 2.4            | 129.2           | 10.4           | 20.4            | 1.1            | 556.4            |
| Others  | 986.4           | 158.8          | 979.9           | 107.3          | 548.7           | 52.6           | 447.0           | 46.8           | 742.6           | 70.3           | 796.5           | 61.5           | 468.4           | 29.0           | 4,969.5          |
| <b>Total:</b>   | <b>59,613.4</b> | <b>9,686.6</b> | <b>56,672.9</b> | <b>6,606.5</b> | <b>65,751.6</b> | <b>6,372.4</b> | <b>76,488.8</b> | <b>8,006.5</b> | <b>94,398.7</b> | <b>9,034.7</b> | <b>90,740.3</b> | <b>7,047.2</b> | <b>33,735.4</b> | <b>2,100.6</b> | <b>477,401.0</b> |

| Zambia's Annual Imports by Top 25 Trading Partners in Million ZMW/USD, 2014 to April 2020 |           |           |           |           |           |           |           |           |           |           |           |           |              |           |           |
|---|-----------|-----------|-----------|-----------|-----------|-----------|-----------|-----------|-----------|-----------|-----------|-----------|--------------|-----------|-----------|
| Year  | 2014      |           | 2015      |           | 2016      |           | 2017      |           | 2018      |           | 2019      |           | 2020-JAN-APR |           | Total     |
| Country   | ZMW (CIF) | USD (CIF) | ZMW (CIF) | USD (CIF) | ZMW (CIF) | USD (CIF) | ZMW (CIF) | USD (CIF) | ZMW (CIF) | USD (CIF) | ZMW (CIF) | USD (CIF) | ZMW (CIF)    | USD (CIF) |           |
| SOUTH AFRICA  | 19,035.7  | 3,094.0   | 22,385.1  | 2,613.0   | 24,850.5  | 2,420.8   | 23,460.2  | 2,460.9   | 28,664.4  | 2,728.4   | 28,659.4  | 2,223.0   | 8,537.4      | 533.1     | 155,592.8 |
| CHINA   | 5,277.2   | 860.2     | 5,671.8   | 693.6     | 6,188.3   | 600.1     | 10,694.1  | 1,121.3   | 13,612.7  | 1,291.2   | 13,131.9  | 1,021.1   | 5,506.5      | 354.2     | 60,082.4  |
| CONGO DR  | 11,415.1  | 1,720.0   | 3,872.2   | 416.0     | 7,523.7   | 738.2     | 9,666.3   | 1,012.5   | 14,557.0  | 1,393.7   | 2,980.7   | 232.1     | 471.3        | 26.7      | 50,486.3  |
| UNITED ARAB EMIRATES  | 1,665.7   | 271.4     | 1,477.1   | 175.7     | 3,276.5   | 316.8     | 4,534.3   | 468.3     | 6,337.7   | 596.2     | 9,598.6   | 740.4     | 3,624.7      | 227.2     | 30,514.7  |
| INDIA   | 2,498.9   | 406.7     | 3,200.2   | 366.0     | 3,252.9   | 316.7     | 2,348.1   | 246.3     | 4,634.4   | 442.9     | 4,483.5   | 352.2     | 1,536.2      | 96.8      | 21,954.2  |
| KUWAIT  | 1,382.4   | 221.5     | 3,660.1   | 395.8     | 5,688.5   | 551.4     | 4,419.9   | 466.7     | 4,559.7   | 440.4     | 1,804.0   | 151.0     | 0.0          | 0.0       | 21,514.6  |
| MAURITIUS   | 796.5     | 128.0     | 4,962.9   | 479.1     | 3,666.3   | 344.5     | 2,087.2   | 217.5     | 2,141.0   | 206.0     | 2,595.0   | 200.2     | 557.0        | 36.1      | 16,805.9  |
| UNITED KINGDOM  | 1,503.7   | 244.6     | 2,042.8   | 229.1     | 1,275.8   | 123.7     | 1,348.2   | 141.8     | 1,946.3   | 185.6     | 1,685.5   | 130.7     | 504.1        | 32.2      | 10,306.3  |
| JAPAN   | 1,328.9   | 216.8     | 1,115.0   | 135.9     | 1,269.8   | 122.5     | 1,228.0   | 129.1     | 1,771.9   | 168.5     | 2,867.3   | 218.5     | 531.3        | 33.6      | 10,112.2  |
| KENYA   | 4,762.3   | 777.9     | 3,095.0   | 414.3     | 539.7     | 51.5      | 339.8     | 35.6      | 528.1     | 50.2      | 543.9     | 42.3      | 158.7        | 9.9       | 9,967.3   |
| UNITED STATES OF AMERICA  | 1,057.8   | 171.5     | 1,272.0   | 139.0     | 1,169.9   | 113.0     | 1,030.7   | 108.5     | 2,043.4   | 194.7     | 2,392.1   | 186.5     | 583.2        | 36.8      | 9,549.1   |
| TANZANIA  | 564.2     | 91.5      | 469.0     | 56.4      | 1,657.2   | 162.6     | 1,558.6   | 165.2     | 1,913.0   | 180.8     | 2,651.0   | 204.4     | 668.1        | 43.4      | 9,481.1   |
| MOZAMBIQUE  | 254.4     | 40.8      | 915.6     | 99.2      | 1,913.8   | 176.7     | 1,692.0   | 180.5     | 1,436.3   | 135.7     | 1,063.9   | 82.3      | 244.8        | 15.1      | 7,520.9   |
| NAMIBIA   | 404.9     | 65.4      | 926.4     | 102.5     | 967.4     | 94.3      | 1,212.8   | 126.0     | 1,083.1   | 104.1     | 1,365.4   | 105.6     | 457.9        | 28.6      | 6,418.0   |
| GERMANY   | 743.8     | 121.2     | 592.8     | 71.3      | 621.5     | 60.1      | 657.3     | 69.5      | 1,142.5   | 107.5     | 1,448.1   | 113.2     | 300.6        | 18.3      | 5,506.6   |
| ZIMBABWE  | 631.0     | 102.2     | 780.9     | 90.3      | 780.1     | 75.9      | 709.1     | 74.5      | 781.7     | 74.2      | 798.6     | 61.8      | 307.6        | 19.3      | 4,789.1   |
| SINGAPORE   | 901.4     | 145.5     | 1,248.7   | 149.1     | 514.3     | 49.0      | 273.1     | 28.6      | 354.6     | 33.0      | 730.5     | 55.4      | 132.2        | 8.4       | 4,154.8   |
| SWEDEN  | 421.5     | 68.7      | 531.0     | 62.8      | 653.1     | 62.9      | 502.8     | 53.6      | 933.6     | 89.5      | 863.2     | 67.5      | 200.4        | 12.6      | 4,105.6   |
| HONG KONG   | 372.2     | 60.5      | 738.9     | 84.1      | 405.6     | 39.0      | 477.2     | 50.0      | 778.5     | 74.6      | 716.2     | 55.1      | 300.5        | 19.2      | 3,789.1   |
| NETHERLANDS   | 490.5     | 79.6      | 576.6     | 63.3      | 498.2     | 48.0      | 557.1     | 58.6      | 526.8     | 50.2      | 727.6     | 56.7      | 137.1        | 8.5       | 3,513.9   |
| AUSTRALIA   | 820.1     | 132.6     | 470.8     | 53.4      | 468.4     | 45.3      | 497.1     | 52.5      | 524.3     | 50.5      | 568.5     | 44.2      | 136.5        | 8.5       | 3,485.6   |
| FINLAND   | 189.1     | 30.5      | 378.7     | 44.3      | 748.7     | 73.6      | 378.9     | 39.7      | 577.6     | 56.0      | 659.0     | 51.2      | 178.3        | 11.3      | 3,110.3   |
| BELGIUM   | 499.6     | 80.2      | 300.8     | 35.6      | 638.8     | 63.0      | 549.0     | 58.0      | 459.9     | 44.0      | 524.6     | 40.8      | 116.6        | 7.3       | 3,089.1   |
| SWITZERLAND   | 250.4     | 40.5      | 743.8     | 86.6      | 402.6     | 39.5      | 435.8     | 45.4      | 530.5     | 50.6      | 312.1     | 24.0      | 73.7         | 4.5       | 2,749.0   |
| IRELAND   | 256.3     | 41.9      | 289.8     | 34.0      | 397.8     | 38.5      | 458.9     | 48.3      | 462.5     | 43.8      | 674.1     | 52.0      | 100.3        | 6.1       | 2,639.8   |
| Others  | 3,568.2   | 580.9     | 6,764.6   | 844.9     | 5,771.5   | 562.1     | 5,064.0   | 529.1     | 6,993.1   | 673.6     | 9,233.6   | 712.9     | 3,486.2      | 219.4     | 40,881.1  |
| Total:  | 61,091.7  | 9,794.7   | 68,482.5  | 7,935.3   | 75,140.8  | 7,289.7   | 76,180.7  | 7,987.9   | 99,294.5  | 9,465.9   | 93,078.5  | 7,225.0   | 28,851.2     | 1,817.2   | 502,119.9 |

## **SURVEYS/ACTIVITIES BEING UNDERTAKEN**

- International Association for Official Statistics (IAOS) Conference, 19<sup>th</sup> - 21<sup>st</sup> May, 2020, Livingstone – ZAMBIA (Postponed)
- Second Generation National Strategy for the Development of Statistics (NSDS) preparations ongoing
- 2020 Census Preparation ongoing
- 2020 Pilot Census Mapping for Copperbelt, Eastern, Luapula, North Western and Western Provinces ongoing

## **SELECTED AVAILABLE REPORTS**

- 2018 Zambia Demographic and Health Survey Final Report (Electronic & Hard copy)
- 2018 Compendium of Statistical Concepts and Definitions (1<sup>st</sup> Edition) (Electronic & Hard copy)
- Zambia in Figures 2018 (Electronic copy)
- 2017 Annual GDP (Print copy)
- Zambia at a Glance 2018 (Data Wheel)
- 2010 Supply, Use and Input Output Tables (Electronic & Hard copy)
- 2017 Labour Force Survey Report (Electronic copy)
- 2016/2017 Crop Forecast Survey Report (Electronic copy)
- 2018/2019 Crop Forecast Survey (Electronic copy)
- 2015 Selected Social Economic Indicators (Print copy)
- 2014-2015 National Accounts Gross Domestic Product (GDP) Report (Electronic copy)
- 2015 Living Conditions Monitoring Survey Main Report (Electronic & Hard copy)
- 2015 Living Conditions Monitoring Survey Key Findings (Electronic & Hard copy)
- 2014 Labour Force Survey Report (Electronic & Hard copy)
- Post-Harvest Survey 2011-2012 (Electronic copy)
- Post-Harvest Survey 2012-2013 (Electronic copy)
- Post-Harvest Survey 2013-2014 (Electronic copy)
- Post-Harvest Survey 2014-2015 (Electronic copy)
- Energy Statistics Report, 2000-2012 (Electronic copy)
- 2013 - 2014 Zambia Demographic and Health Survey Report ((Electronic & Hard copy)
- Sample Vital Registration with Verbal Autopsy (SAVVY) 2010-2012 (Electronic & Hard copy)
- Population and Demographic Projections Report, 2011- 2035 (Electronic & Hard copy)
- 2010 Census of Population and Housing National Analytical and Descriptive Tables Reports (Electronic & Hard copy)
- 2010 Census of Population and Housing Provincial Analytical and Descriptive Tables Reports (Electronic & Hard copy)

Subscribe for your free electronic copy of “The Monthly” online at [www.zamstats.gov.zm](http://www.zamstats.gov.zm)  
For more data at your fingertips visit our data portal at: <http://zambia.opendataforafrica.org>

**The Editorial Team would like to thank all Media Institutions and Users of.....**

## **“The Monthly Bulletin”**

### **Thank you for supporting us**

#### **Secretariat**

|                      |  |
|----------------------|--|
| Mulenga J. J. Musepa | - Interim Statistician General         |
| Sheila S. Mudenda    | - Assistant Director (IRD)             |
| Etambuyu Lukonga     | - Head of Dissemination                |
| Welani Simwinga      | - Statistician                         |
| Anthony Nkole        | - Desktop Publishing Officer           |
| Perry Musenge        | - Assistant Desktop Publishing Officer |
| Emmanuel Mulambia    | - Senior Statistical Officer           |
| Elvis Muchinta       | - Sales Officer                        |
| Catherine Mumba      | - Dissemination Officer                |

#### **Editorial Team**

|                      |                                |
|----------------------|--------------------------------|
| Mulenga J. J. Musepa | - Interim Statistician General |
| Sheila S. Mudenda    | - Assistant Director (IRD)     |
| Joseph Tembo         | - Assistant Director (Econ)    |