



Republic of Zambia

The Monthly

Central Statistical Office

Volume 90

Website: www.zamstats.gov.zm

September, 2010

Foreword

Welcome to the Monthly presentation organised by the Dissemination Branch of the Central Statistical Office (CSO). The CSO embarks on vigorous information delivery strategy to major stakeholders and the media institutions in order to increase utilisation of statistical products and services. The office produces a number of statistical products in the Economic, Social, Agricultural and Environmental areas. The information collected in these areas may be used for various purposes including policy formulation, planning, implementation, monitoring and evaluation of programmes and projects.

This Monthly publication is an attempt to provide highlights of CSO's work and how it can help media institutions and the general public to make use of data and information for sustainable national development and decision-making.

I would like to urge our readers and users of statistical information to send to us any comments that may enhance statistical production and contribute to the improvement of this bulletin.

John Kalumbi
Acting Director of Census and Statistics

30th September, 2010

Inside this Issue

- September 2010 Inflation Declines
- August 2010 Records Trade Surplus
- Preparations for the Zambia 2010 census heighten!
- Selected Socio-Economic Indicators

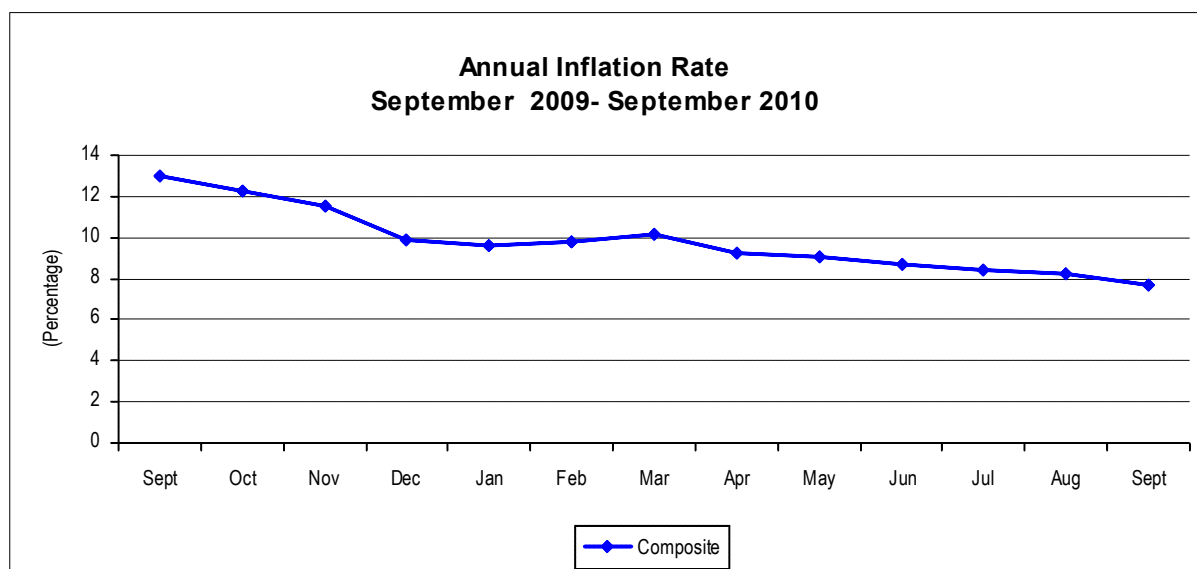
**2010 Census of Population and Housing commences on October 16, 2010
after the launch by His Excellency The President of the Republic of Zambia
Mr. Rupiah Bwezani Banda on 15th October, 2010**

INFLATION

September 2010 Inflation declines

The annual rate of inflation, as measured by the all items Consumer Price Index (CPI), reduced to 7.7 percent in September 2010, from 8.2 percent in

August, 2010. The decrease is attributed to reductions in the cost of some food and non-food items.



Source: CSO, Prices statistics 2010

Changes in annual inflation rates for CPI Main Groups

Between August 2010 and September 2010, annual inflation rates reduced for food and beverages; clothing and footwear; household fuel and lighting; medical care;

and furniture and household goods. The annual inflation rates increased for transport and communication; and recreation and education.

Annual Inflation Rate: CPI Main Groups Percent

	Total	Food And Beverages	Clothing And Footwear	Rent Fuel & Lighting	Furniture and Household Goods	Medical care	Transport and comms	Recreation And Education	Other Goods And Services
Jan 07 . Jan 06	9.8	1.0	34.9	15.1	16.5	24.9	22.8	15.9	11.4
Feb 07 . Feb 06	12.6	4.2	28.3	18.3	20.4	23.7	33.9	15.0	10.4
Mar 07 . Mar 06	12.7	4.9	26.9	15.8	21.6	22.1	33.5	14.9	11.0
Apr 07 . Apr 06	12.4	5.5	23.7	15.7	20.0	18.8	32.4	14.8	7.7
May 07 . May 06	11.8	5.7	18.8	17.1	19.2	16.5	28.2	10.4	7.0
Jun 07 . June 06	11.1	4.8	20.3	18.1	18.1	14.9	24.6	10.6	7.0
Jul 07 . July 06	11.2	6.7	19.4	14.9	17.4	14.0	18.2	10.0	7.7
Aug 07- Aug 06	10.7	7.9	19.6	11.6	15.2	11.6	11.8	10.0	7.5
Sep 07 . Sep 06	9.3	6.2	17.9	11.2	15.5	11.4	9.7	8.1	7.7
Oct 07 . Oct 06	9.0	5.6	14.7	11.8	16.8	10.9	10.3	7.4	6.3
Nov 07 . Nov 06	8.7	5.2	16.3	10.7	15.8	10.2	11.6	7.1	6.7
Dec 07 . Dec 06	8.9	5.9	14.2	11.2	13.4	9.1	13.6	8.2	6.9
Jan 08 . Jan 07	9.3	6.9	12.5	13.4	17.1	8.4	7.7	6.8	7.0
Feb 08 . Feb 07	9.5	9.1	11.1	12.5	16.0	8.9	0.3	9.0	8.4
Mar 08 . Mar 07	9.8	9.1	11.2	12.2	16.1	10.0	1.1	10.3	9.4
Apr 08 . Apr 07	10.1	9.8	11.1	12.7	16.3	12.2	-0.2	11.1	9.4
May 08 . May 07	10.9	11.7	10.5	12.0	14.9	12.4	0.5	11.4	9.5
Jun 08 . June 07	12.1	15.6	9.7	11.4	13.4	12.2	-3.5	10.6	10.4

	Total	Food And Beverages	Clothing And Footwear	Rent Fuel & Lighting	Furniture and Household Goods	Medical care	Transport and comms	Recreation And Education	Other Goods And Services
Jul 08 . Jul 07	12.6	14.2	9.3	14.9	14.2	13.9	4.7	11.0	11.3
Aug 08- Aug 07	13.2	16.3	6.3	14.5	13.3	12.9	5.3	11.2	10.7
Sep 08. Sep 07	14.2	16.2	5.6	17.7	14.8	11.8	11.5	11.5	10.4
Oct 08 . Oct 07	15.2	17.6	4.6	14.9	15.1	11.3	19.2	11.6	12.1
Nov 08 . Nov 07	15.3	18.5	2.7	14.5	16.1	10.3	16.4	12.4	12.5
Dec 08 . Dec 07	16.6	20.5	2.5	15.2	18.0	9.9	15.9	12.1	13.2
Jan 09 . Jan 08	16.0	21.3	3.0	8.9	13.8	9.2	18.3	11.7	15.2
Feb 09 . Feb 08	14.0	16.3	3.9	8.6	16.5	9.6	19.4	9.3	15.4
Mar 09 . Mar 08	13.1	13.9	5.9	10.4	16.3	10.1	19.7	7.9	15.2
Apr 09 . Apr 08	14.3	15.9	6.8	10.4	16.1	8.2	22.0	7.1	17.1
May 09 . May 08	14.7	16.1	7.9	10.7	21.2	8.0	16.6	6.0	20.0
Jun 09 . June 08	14.4	14.1	9.6	10.1	22.4	10.0	21.0	6.9	22.6
Jul 09 . Jul 08	14.0	14.9	9.9	7.9	22.1	10.2	13.0	8.9	21.6
Aug 09- Aug 08	14.3	14.6	11.4	11.7	21.7	10.3	10.4	10.1	20.6
Sep 09. Sep 08	13.0	13.9	13.6	9.9	21.4	13.3	1.3	9.7	20.5
Oct 09 . Oct 08	12.3	12.3	15.0	11.7	19.4	14.9	-3.2	12.0	24.7
Nov 09 . Nov 08	11.5	11.1	15.0	11.2	19.1	14.4	-3.1	11.0	23.6
Dec 09 . Dec 08	9.9	8.0	15.8	11.4	17.6	15.9	-3.4	10.6	26.0
Jan 10 . Jan 09	9.6	7.1	15.7	14.7	16.4	15.8	-4.0	10.5	23.0
Feb 10 . Feb 09	9.8	8.2	14.7	13.3	14.3	15.7	-1.1	9.9	21.1
Mar 10 . Mar 09	10.2	9.3	11.4	12.9	14.1	15.0	1.6	9.9	19.7
Apr 10 . Apr 09	9.2	7.3	11.4	14.4	13.0	15.0	1.6	9.8	20.2
May 10 . May 09	9.1	6.5	10.5	12.4	12.3	15.3	9.9	11.2	16.8
Jun 10 . June 09	7.8	3.8	9.9	15.7	10.1	14.4	11.1	10.8	12.8
Jul 10 . Jul 09	8.4	4.1	11.9	17.0	10.8	12.7	13.0	9.0	12.8
Aug 10- Aug 09	8.2	2.9	12.8	17.2	14.6	13.1	12.4	6.5	14.1
Sep 10. Sep 09	7.7	2.8	11.3	15.8	11.5	9.8	15.3	6.6	14.1

Source: CSO, Prices statistics 2010

Contributions of different Items to overall inflation

Of the total 7.7 percent annual inflation in September 2010, food products in the Consumer Price Index (CPI) accounted for

1.4 percentage points, while non-food products accounted for a total of 6.3 percentage points.

Items	Percentage Points Contributions of different items to overall inflation												
	Sep-09	Oct-09	Nov-09	Dec-09	Jan-10	Feb-10	Mar-10	Apr-10	May-10	Jun-10	Jul-10	Aug-10	Sep-10
Food Beverages and Tobacco	6.8	6	5.5	4	3.6	4.1	4.6	3.6	3.2	1.9	2.0	1.4	1.4
Clothing and Footwear	1.2	1.4	1.3	1.3	1.4	1.3	1	1.0	0.9	0.9	1.1	1.1	1.0
Rent and household energy	1.1	1.3	1.3	1.3	1.6	1.5	1.4	1.6	1.4	1.7	1.9	1.9	1.8
Furniture and Household Goods	2.4	2.2	2.2	2	1.8	1.7	1.6	1.5	1.5	1.2	1.3	1.8	1.4
Medical Care	0.1	0.1	0.1	0.1	0.1	0.1	0.2	0.1	0.2	0.1	0.1	0.1	0.1
Transport (fuel, airfares, new motor vehicles)	0.1	-0.2	-0.3	-0.3	-0.3	-0.1	0.1	0.2	0.7	0.9	1.0	1.0	1.2
Recreation and Education	0.7	0.8	0.7	0.7	0.7	0.6	0.6	0.6	0.7	0.7	0.6	0.4	0.4
Other Goods and Services	0.6	0.7	0.7	0.8	0.7	0.6	0.7	0.6	0.5	0.4	0.4	0.5	0.4
All Items	13	12.3	11.5	9.9	9.6	9.8	10.2	9.2	9.1	7.8	8.4	8.2	7.7

Source: CSO, Prices statistics 2010

The annual food inflation rate

The annual food inflation rate was recorded at 2.8 percent in September 2010. This is a marginal decrease from 2.9 percent in August, 2010.

Non-food inflation

The annual non-food inflation was recorded at 12.5 percent in September, 2010. This is a decrease from 13.4 percent in August 2010.

Annual Inflation Rates: Food and Non food

Period	Total	Food	Non-Food
Jan 06 . Jan 05	12.2	12.8	11.5
Feb 06 - Feb 05	10.3	10.2	10.3
Mar 06 - Mar 05	10.7	10.9	10.4
Apr 06 . Apr 05	9.4	8.3	10.6
May 06 . May 05	8.6	5.6	12.0
Jun 06 - Jun 05	8.5	5.4	11.8
Jul 06 - Jul 05	8.7	4.3	13.6
Aug 06 . Aug 05	8.0	0.4	16.4
Sep 06 . Sep 05	8.2	1.5	15.7
Oct 06 - Oct 05	7.9	1.0	15.4
Nov 06 - Nov 05	8.1	0.8	16.2
Dec06 . Dec 05	8.2	-0.2	18.1
Jan 07 - Jan 06	9.8	1.0	20.0
Feb 07 - Feb 06	12.6	4.2	22.1
Mar 07 - Mar 06	12.7	4.9	21.5
Apr 07 . Apr 06	12.4	5.5	20.1
May 07 . May 06	11.8	5.7	18.2
Jun 07 - Jun 06	11.1	4.8	17.7
Jul 07- Jul 06	11.2	6.7	15.6
Aug 07. Aug 06	10.7	7.9	13.3
Sep 07 . Sep 06	9.3	6.2	12.4
Oct 07- Oct 06	9.0	5.6	12.2
Nov 07- Nov 06	8.7	5.2	12.2
Dec07 . Dec 06	8.9	5.9	11.9
Jan 08 - Jan 07	9.3	6.9	11.7
Feb 08 - Feb 07	9.5	9.1	10.0
Mar 08 - Mar 07	9.8	9.1	10.4
Apr 08. Apr 07	10.1	9.8	10.5
May 08 . May 07	10.9	11.7	10.1
Jun 08 - Jun 07	12.1	15.6	8.8
Jul 08- Jul 07	12.6	14.2	11.2
Aug 08. Aug 07	13.2	16.3	10.4
Sep 08 . Sep 07	14.2	16.2	12.4
Oct 08- Oct 07	15.2	17.6	13.0
Nov 08- Nov 07	15.3	18.5	12.4
Dec 08 . Dec 07	16.6	20.5	12.9
Jan 09 - Jan 08	16.0	21.3	11.1
Feb 08 - Feb 07	14.0	16.3	11.7
Mar 09 - Mar 08	13.1	13.9	12.3
Apr 09. Apr 08	14.3	15.9	12.7
May 09 . May 08	14.7	16.1	13.3
Jun 09 - Jun 08	14.4	14.1	14.7
Jul 09- Jul 08	14.0	14.9	13.1
Aug 09. Aug 08	14.3	14.6	13.9
Sep 09 . Sep 08	13.0	13.9	12.1
Oct 09- Oct 08	12.3	12.3	12.3

Period	Total	Food	Non-Food
Nov 09- Nov 08	11.5	11.1	11.9
Dec 09 . Dec 08	9.9	8.0	11.8
Jan 10 . Jan 09	9.6	7.1	12.0
Feb 10 . Feb 09	9.8	8.2	11.3
Mar 10 - Mar 09	10.2	9.3	11.0
Apr 10. Apr 09	9.2	7.3	11.2
May 10 . May 09	9.1	6.5	11.6
Jun 10 - Jun 09	7.8	3.8	11.8
Jul 10- Jul 09	8.4	4.1	12.6
Aug10. Aug 09	8.2	2.9	13.4
Sep 09 . Sep 08	7.7	2.8	12.5

Source: CSO, Prices statistics 2010

National Average Prices of Selected Products

A comparison of retail prices between August 2010 and September 2010 shows that the national average price of 25 kg bag of white breakfast meal reduced by 2.2 percent, from K57,690 to K56,431. The average price of white roller meal also reduced though slightly by 0.2 percent, from K35,137 to K35,068. The national average price of a 20 litre tin of

maize grain reduced by 2.8 percent, from K19,031 to K18,498.

The national average price of 1kg of dried kapenta (Mpulungu) reduced by 10.2 percent, from K60,718 to K54,524, while the national average price of 1kg of rape vegetable reduced by 4.8 percent, from K2,478 to K2,358.

National Average Prices for selected Products and Months

Product Description	2010						Percentage Change
	April	May	June	July	August	September	Sep-10/Aug-10
White breakfast 25Kg	62,845	61,945	59,959	59,306	57,690	56,431	-2.2
White Roller 25Kg	48,940	46,459	40,161	37,809	35,137	35,068	-0.2
White Maize 20 litre tin	23,871	20,473	19,570	18,567	19,031	18,498	-2.8
Rice Local 1 Kg	7,666	7,790	7,770	7,927	8,042	7,947	-1.2
Sorghum 5 litre tin	12,373	13,114	13,106	14,129	13,795	12,427	-9.9
Fillet Steak 1 Kg	29,661	30,065	29,796	31,063	32,013	31,593	-1.3
Rump Steak 1 Kg	26,735	26,829	27,097	26,962	27,997	27,642	-1.3
Brisket 1 Kg	19,968	20,413	20,414	20,778	20,819	20,880	0.3
Mince Meat 1 Kg	23,804	24,469	24,725	24,567	24,532	24,666	0.5
Mixed Cut 1 Kg	19,085	19,127	18,953	19,216	19,509	19,480	-0.1
Pork chops 1 Kg	23,346	23,335	23,383	23,706	23,748	23,736	-0.1
Mutton 1 Kg	32,378	32,200	30,674	30,816	33,205	32,233	-2.9
Fresh Kapenta 400 gms	5,927	5,862	6,070	6,007	6,505	6,326	-2.8
Dried Kapenta Mpulungu 1 Kg	59,356	58,929	55,824	56,795	60,718	54,524	-10.2
Dried Kapenta Siavonga 1 Kg	51,982	53,874	50,710	53,748	52,621	51,466	-2.2
Dried Kapenta Chisense 1Kg	30,357	34,207	34,964	37,604	36,161	36,325	0.5
Cabbage 1kg	1,912	1,820	1,760	1,644	1,563	1,468	-6.1
Onion 1kg	6,222	6,928	6,589	6,582	6,138	5,990	-2.4
Carrots 1kg	6,165	6,350	4,926	5,298	5,444	5,251	-3.5
Green beans 1kg	6,814	6,849	6,329	7,636	7,147	6,810	-4.7
Pumpkin leaves 1kg	3,056	3,172	3,335	3,664	4,032	3,879	-3.8
Lettuce 1kg	2,784	2,784	4,707	3,639	3,686	2,898	-21.4
Spinach 1kg	3,249	3,720	3,182	3,061	2,812	2,796	-0.6
Rape 1kg	2,683	2,916	2,804	2,741	2,478	2,358	-4.8
Shelled groundnut 1kg	8,094	7,604	7,100	7,441	7,670	7,453	-2.8
Irish potatoes 1kg	4,134	4,323	4,352	4,642	4,222	4,142	-1.9
Raw cassava tubers Unsoaked 1kg	1,738	1,449	1,601	1,674	1,878	1,868	-0.5
Chikanda tubers 1kg	11,958	14,405	15,832	15,132	15,008	14,514	-3.3
Air fare Lusaka/London British Airways 1 Way	6,129,600	6,380,000	7,404,800	7,404,800	7,262,400	7,120,000	-2.0

Source: CSO, Prices statistics 2010

INTERNATIONAL MERCHANDIZE TRADE

August 2010 Records Trade Surplus

Zambia recorded a trade surplus valued at about K 865.7 Billion in August 2010. This means that the country exported more in August 2010 than it imported in value terms. The country

has continued to register surpluses since January 2010 with the highest valued at about K1, 147.7 Billion in March, 2010.

Total Exports (fob) and Imports (cif), January 2010 to August 2010 (K' Millions)

Months	Imports(cif)	Domestic Exports(fob)	Re- Exports(fob)	Total Exports(fob)	Trade Balance
January	1,765,443	2,126,943	86,773	2,213,716	448,274
February	1,868,729	2,301,681	83,337	2,385,018	516,289
March	2,119,079	3,144,227	122,582	3,266,809	1,147,731
Quarter 1	5,753,251	7,572,851	292,692	7,865,543	2,112,294
April	2,065,995	3,087,971	113,751	3,201,721	1,135,726
May	2,170,695	2,809,048	124,968	2,934,016	763,321
June	2,024,675	2,428,063	136,044	2,564,107	539,432
Quarter 2	6,261,365	8,325,082	374,763	8,699,844	2,438,479
July	1,744,050	2,638,487	174,719	2,813,206	1,069,156
August*	2,212,936	2,910,816	167,811	3,078,627	865,691
Total:	15,971,602	21,447,236	1,009,985	22,457,220	6,485,621

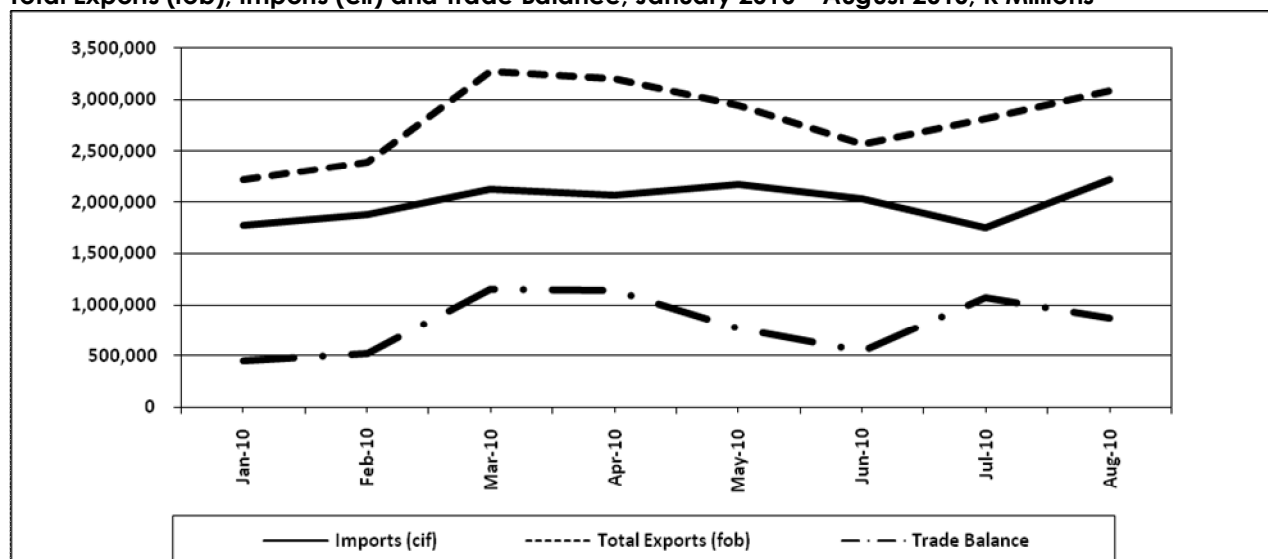
Source: CSO, International Trade Statistics, 2010.

These trade data are compiled based on the General Trade System

Note: (*) Provisional

(®) Revised

Total Exports (fob), Imports (cif) and Trade Balance, January 2010 – August 2010, K'Millions



Source: CSO, International Trade Statistics, 2010

Note: From January to July, figures are revised

Exports by Major Product Categories August 2010 and July 2010

Zambia's major export products in August 2010 were from the Intermediate goods category (mainly comprising copper cathodes and sections of refined copper and copper blister) accounting for 83.5 percent. The Raw materials category (mainly

comprising cobalt ores & concentrates and copper ores & concentrates) was second with 9.6 percent. Other exports were from the Consumer and Capital goods categories which collectively accounted for 6.9 percent of total exports for August 2010.

Exports by major product categories August and July 2010, (K'Millions)

Product Category	August-2010*		July-2010®	
	Value (K'million)	% Share	Value (K'million)	% Share
Consumer Goods	185,486	6.0	220,731	7.8
Raw Materials	295,312	9.6	234,356	8.3
Intermediate Goods	2,571,442	83.5	2,304,738	81.9
Capital Goods	26,387	0.9	53,381	1.9
Total:	3,078,627	100.0	2,813,206	100.0

Source: CSO, International Trade Statistics, 2010

Note: (*) Provisional

(®) Revised

Zambia's Metal Exports and Non-Traditional Exports (NTEs) August and July 2010

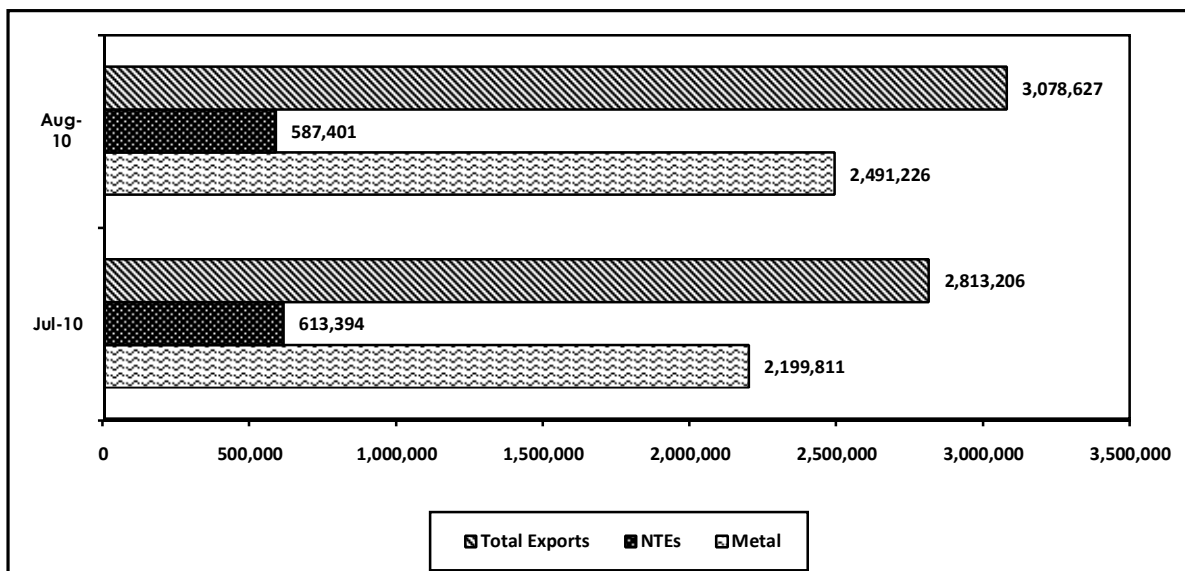
There has been an increase in the total value of exports between August and July 2010. The country's ever dominant metal products recorded a higher value in revenue growth of about 13.2 percent in nominal terms, between August and July 2010. The overall contribution of metal products to the total exports earnings was 80.9 and 78.2 percent in August and July 2010, respectively.

In terms of percentage contribution to the total export earnings, NTEs recorded 19.1 and 21.8 percent in August and July 2010, respectively.

Zambia's Metals Exports and Non-Traditional Exports (NTEs) August and July 2010, K'Million.

GROUP	August-2010*		July-2010®	
	Value (K'Million)	% Share	Value (K'Million)	% Share
Traditional Exports (mainly Metals)	2,491,226	80.9	2,199,811	78.2
Non-Traditional Exports (NTEs)	587,401	19.1	613,394	21.8
Total Exports	3,078,627	100.0	2,813,206	100.0

Zambia's Metals Exports and Non-Traditional Exports (NTEs) August and July 2010, K'Million



Source: CSO, *International Trade Statistics, 2010*

Note: (*) Provisional
(R) Revised figures

Zambia's Major Export Destinations by Product in August 2010

Zambia's major export destination in August 2010 was Switzerland accounting for 55.1 percent. The major export products to Switzerland were: Cathodes & Sections of Cathodes of refined Copper.

China was the second largest destination of Zambia's total exports accounting for 20.5 percent. The major export products were copper blister; cathodes & sections of cathodes of refined copper; and articles of cobalt.

South Africa was the third major export destination with 7.0 percent. The major export products to South Africa were Wire of refined copper, maximum cross-sectional

dimension; Semi manufactured gold; Cathode and sections of cathodes of refined copper.

The Democratic Republic of Congo was the fourth largest destination of Zambia's total exports accounting for 5.3 percent. The major export products to this nation were Raw cane sugar, in solid form; Rare gases (excl. Argon); Portland cement (excl. white) and Wheat or meslin flour.

Malawi was the fifth largest destination of Zambia's total exports, accounting for 1.7 percent. The major export products were: Tobacco, not stemmed/stripped and Cement clinkers.

These five countries collectively accounted for 89.6 percent of Zambia's total export earnings.

Zambia's Five Major Export Destinations by Product for August 2010*

Country / Hs-Code	Description	Aug-2010*	
		Value (K'Million)	% Share
SWITZERLAND		1,695,117	100.0
74031100	Cathodes and sections of cathodes of refined copper	1,156,130	68.2
74091900	Plates, sheets and strip, of refined copper, uncoil	233,195	13.8
74031910	Copper blister	146,304	8.6
26030000	Copper ores and concentrates	43,582	2.6
26050000	Cobalt ores and concentrates	42,027	2.5
26203000	Ash and residues containing mainly copper	39,973	2.4
52010000	Cotton, not carded or combed	17,183	1.0
81059000	Other: articles of cobalt, nes	6,921	0.4
74032900	Copper (excl. Master) alloys, nes, unwrought	6,868	0.4
47061000	Cotton linters pulp	1,801	0.1
Other Products		1,134	0.1
% of Total August Exports		55.1	
CHINA		632,214	100.0
74031910	Copper blister	389,983	61.7
74031100	Cathodes and sections of cathodes of refined copper	117,992	18.7
81059000	Other: articles of cobalt, nes	88,790	14.0
74032900	Copper (excl. Master) alloys, nes, unwrought	19,543	3.1
26203000	Ash and residues containing mainly copper	4,253	0.7
26040000	Nickel ores and concentrates	3,985	0.6
26020000	Manganese ores/concentrates(inc.ferruginous), with	2,512	0.4
52010000	Cotton, not carded or combed	2,063	0.3
44071000	Coniferous wood sawn or chipped lengthwise, sliced	972	0.2
44079900	Wood, nes sawn or chipped lengthwise, sliced or pe	911	0.1
Other Products		1,210	0.2
% of Total August Exports		20.5	
SOUTH AFRICA		215,937	100.0
74081100	Wire of refined copper, maximum cross-sectional dimension >6mm	52,165	24.2
71081300	Semi-manufactured gold (incl. Gold plated with pla	45,579	21.1
74031100	Cathodes and sections of cathodes of refined copper	31,269	14.5
17011100	Raw cane sugar, in solid form	17,808	8.2
85444900	Electric conductors, nes, for a voltage <=80 v, no	11,613	5.4
26040000	Nickel ores and concentrates	9,317	4.3
28220010	Cobalt oxides and hydroxides; commercial cobalt ox	8,643	4.0
52010000	Cotton, not carded or combed	7,961	3.7
74032900	Copper (excl. Master) alloys, nes, unwrought	3,183	1.5
24011000	Tobacco, not stemmed/stripped	3,029	1.4
Other Products		25,370	11.7
% of Total August Exports		7.0	
CONGO DR		164,317	100.0
17011100	Raw cane sugar, in solid form	23,303	14.2
28042900	Rare gases (excl. Argon)	22,191	13.5
25232900	Portland cement (excl. White)	12,301	7.5
11010000	Wheat or meslin flour	11,145	6.8
73249000	Sanitary ware and parts of sanitary ware of iron o	9,021	5.5
28070010	Sulphuric acid; oleum in bulk	8,607	5.2
33029010	Other mixtures with basis of odoriferous subst.inc	6,369	3.9
28044000	Oxyaen	6,264	3.8

Country / Hs-Code	Description	Aug-2010*	
		Value (K'Million)	% Share
28020010	Sulphur, sublimed or precipitated; colloidal sulph	3,835	2.3
36030090	Other safety fuses; detonating fuses; caps; ignite	3,592	2.2
Other Products		57,689	35.1
% of Total August Exports		5.3	
MALAWI		53,200	100.0
24011000	Tobacco, not stemmed/stripped	26,307	49.4
25231000	Cement clinkers	9,434	17.7
25232900	Portland cement (excl. White)	3,437	6.5
10051000	Maize seed	2,274	4.3
72142090	Iron/steel bars & rods, hotrolled, twisted/with deformtns from rolling proc. - other	1,864	3.5
22029000	Other non-alcoholic beverages, nes	890	1.7
34012090	Soap in other forms, nes - other	753	1.4
30049000	Other medicaments of mixed or unmixed products, fo	633	1.2
38089110	Other insecticides, for use in agriculture or horticulture, nes	514	1.0
87042290	Other	506	1.0
Other Products		6,586	12.4
% of Total August Exports		1.7	
Other Destination		317,843	10.3
Total Value of August Exports (fob)		3,078,627	

Source: CSO, International Trade Statistics, 2010

Note: (*) Provisional

Export Market Shares by Regional Groupings, August and July 2010

Asia was the largest market for Zambia's total exports, accounting for 23.1 and 23.5 percent in August and July 2010, respectively. Within Asia, China was the dominant market in both months with 89.0 and 85.5 percent in August and July 2010, respectively. Japan was the second dominant market with 4.7 percent in August 2010 while United Arab Emirates was second in July 2010, with 13.4 percent. Other notable markets were India, Saudi Arabia, Singapore and Hong Kong.

The Southern African Development Community (SADC) regional grouping was the second largest market for Zambia's total exports, accounting for 16.8 and 18.1 percent in August and July 2010, respectively. Within SADC, South Africa was the dominant market in both months with 41.8 and 40.3 percent in August and July 2010, respectively. Congo DR was second with 31.8 percent in August and 29.5 percent in July 2010. Malawi was the third largest market with 10.3 and 12.1 percent in August and July 2010, respectively. Other notable markets were Zimbabwe and Mauritius.

The Common Market for Eastern and Southern Africa (COMESA) grouping of

countries was the third largest market for Zambia's total exports accounting for 11.5 and 12.1 percent, in August and July 2010, respectively. Within COMESA, Congo (DR) was the dominant market in both months with 46.6 and 44.2 percent in August and July 2010, respectively. Malawi was the second dominant market with 15.1 and 18.1 percent in August and July 2010, respectively. The third largest market was Zimbabwe with 12.7 and 12.8 percent in August and July 2010, respectively. Other notable key markets were Kenya and Egypt.

The European Union (EU) was the fourth largest market for Zambia's total exports accounting for 2.4 and 3.6 percent in August and July 2010, respectively. Within the EU, the dominant market in both months was The United Kingdom with 36.4 and 36.9 percent in August and July 2010 respectively. Netherlands was second in August 2010 with 30.3 percent, while in July 2010 Belgium was the second dominant market with 26.4 percent. Other notable markets were Germany, Luxembourg and France.

Export Market Shares by Regional Groupings, August* and July® 2010 (K' Millions)

GROUPING	Aug-10		GROUPING	Jul-10	
	Value (K'Million)	% Share		Value (K'Million)	% Share
ASIA	710,302	100.0	ASIA	660,064	100.0
China	632,214	89.0	China	564,640	85.5
Japan	33,061	4.7	United Arab Emirates	88,777	13.4
United Arab Emirates	19,343	2.7	India	3,486	0.5
Saudi Arabia	13,080	1.8	Singapore	1,334	0.2
India	8,459	1.2	Hong Kong	1,100	0.2
Other ASIA	4,146	0.6	Other ASIA	726	0.1
% of Total August Exports	23.1		% of Total July Exports	23.5	
SADC	516,165	100.0	SADC	510,094	100.0
South Africa	215,937	41.8	South Africa	205,587	40.3
Congo DR	164,317	31.8	Congo DR	150,423	29.5
Malawi	53,200	10.3	Malawi	61,499	12.1
Zimbabwe	44,866	8.7	Zimbabwe	43,422	8.5
Mauritius	14,200	2.8	Mauritius	14,653	2.9
Other SADC	23,645	4.6	Other SADC	34,512	6.8
% of Total August Exports	16.8		% of Total July Exports	18.1	
COMESA	352,521	100.0	COMESA	340,502	100.0
Congo DR	164,317	46.6	Congo DR	150,423	44.2
Malawi	53,200	15.1	Malawi	61,499	18.1
Zimbabwe	44,866	12.7	Zimbabwe	43,422	12.8
Egypt	38,872	11.0	Kenya	22,284	6.5
Kenya	17,957	5.1	Egypt	19,196	5.6
Other COMESA	33,310	9.4	Other COMESA	43,679	12.8
% of Total August Exports	11.5		% of Total July Exports	12.1	
EUROPEAN UNION	74,968	100.0	EUROPEAN UNION	102,355	100.0
United Kingdom	27,311	36.4	United Kingdom	37,782	36.9
Netherlands	22,701	30.3	Belgium	27,046	26.4
Belgium	18,620	24.8	Netherlands	19,654	19.2
Germany	2,325	3.1	Luxembourg	12,435	12.1
Luxembourg	1,984	2.6	France	2,427	2.4
Other EU	2,028	2.7	Other EU	3,010	2.9
% of Total August Exports	2.4		% of Total July Exports	3.6	
Total Value of August Exports	3,078,627		Total Value of July Exports	2,813,206	

Source: CSO, International Trade Statistics, 2010

Note: (*) Provisional

(R) Revised figures

Some countries are members of both SADC and COMESA

Imports by Major Product Categories, August and July 2010

Zambia's major import products by category in August 2010 were the raw materials goods accounting for 32.9 percent. These mostly comprised copper ores and concentrates, petroleum oils and oils obtained from bituminous minerals, cobalt ores and concentrates and mineral or chemical

fertilizers with nitrogen. Intermediate category was second with 27.9 percent. Other notable imports were from the Capital and consumer goods category, which accounted for 25.9 and 13.3 percent, in August 2010, respectively.

Imports (cif) by Major Product Categories August and July 2010, K'Millions

Description	August-10*		July -10®	
	Value	% Share	Value	% Share
Consumer Goods	293,868	13.3	265,370	15.2
Raw Materials	727,393	32.9	415,474	23.8
Intermediate Goods	617,597	27.9	588,760	33.8
Capital Goods	574,079	25.9	474,445	27.2
Total:	2,212,936	100.0	1,744,050	100.0

Source: CSO, International Trade Statistics, 2010

Note: (*) Provisional (R) Revised figures

Zambia's Major Import Sources by Product, August 2010

The major source of Zambia's imports in August 2010 was South Africa accounting for 38.5 percent. The major import products from South Africa were Dumpers for off-highway use and Parts of machinery.

The second main source of Zambia's imports in August 2010 was Congo DR accounting for 21.0 percent of the total value of imports. The major import products from Congo DR were:

Copper ores and concentrates; cobalt ores and concentrates; Cobalt oxides and hydroxides, Commercial cobalt oxide and Self-propelled bulldozers and angle dozers, (excl.).

Other notable sources of Zambia's imports were Kuwait, China and India, collectively accounting for 18.4 percent of Zambia's total imports in August 2010.

Zambia's Major Import Sources by Products, August 2010* (K'Millions)

Country / Hs-Code	Description	Aug-10	
		Value (K'Million)	% Share
SOUTH AFRICA		852,082	100.0
87041000	Dumpers for off-highway use	70,893	8.3
84314900	Parts of machinery of 84.26, 84.29 and 84.30, nes	16,153	1.9
31052000	Mineral or chemical fertilizers with nitrogen, pho	15,905	1.9
27101950	Cutting oil,grease cutting oils,cleaning oils etc.	15,304	1.8
31059000	Other fertilizers, nes	13,860	1.6
31023000	Ammonium nitrate	13,106	1.5
30049000	Other medicaments of mixed or unmixed products, fo	11,837	1.4
87042110	Diesel dual purpose vehicles for both persons & go	9,797	1.1
87019010	Tractors (excl. Tractors of 87.09), nes - for use	9,208	1.1
31042000	Potassium chloride	9,147	1.1
Other Products		666,872	78.3
% of Total August Imports		38.5	
CONGO DR		463,857	100.0
26030000	Copper ores and concentrates	288,046	62.1
26050000	Cobalt ores and concentrates	96,285	20.8
28220010	Cobalt oxides and hydroxides; commercial cobalt ox	74,726	16.1
84291900	Self-propelled bulldozers and angle dozers, (excl.	1,886	0.4
84295900	Self-propelled bulldozers, excavators..., nes	1,280	0.3
84749000	Parts of machinery of 84.74	502	0.1
87012000	Road tractors for semi-trailers	151	0.0
99030000	Single consignment non commercial goods	135	0.0
84314900	Parts of machinery of 84.26, 84.29 and 84.30, nes	116	0.0
99020000	Goods imported by traveler for own use	75	0.0
Other Products		654	0.1
% of Total August Imports		21.0	
KUWAIT		236,148	100.0
27090000	Petroleum oils and oils obtained from bituminous m	236,148	100.0
01019000	Other	0	0.0
01021020	Pure-bred breeding animals---cows and calves	0	0.0
01059400	Live fowls of the species gallus domesticus	0	0.0
01061100	Mammals--primates	0	0.0
01061900	Mammals--other	0	0.0
01069000	Other live animals	0	0.0
02022000	Frozen un boned bovine meat (excl. Carcasses)	0	0.0

Country / Hs-Code	Description	Aug-10	
		Value (K'Million)	% Share
02023000	Frozen boneless bovine meat	0	0.0
02031200	Fresh or chilled un boned hams, shoulders and cuts	0	0.0
Other Products		0	0.0
% of Total August Imports		10.7	
CHINA		117,828	100.0
87042300	Goods vehicles, with diesel or semi-diesel engines	8,706	7.4
73089090	Structures and parts of structures, nes, of iron o	5,463	4.6
76141000	Cables... Of aluminium, with steel core, not elect	5,446	4.6
72192100	Hot-rolled stainless steel, uncoiled, >=600mm by >10mm	3,987	3.4
84295900	Self-propelled bulldozers, excavators..., nes	2,709	2.3
44184000	Shuttering for concrete constructional work, of woo	2,700	2.3
85042200	Liquid dielectric transformers, power handling cap	2,681	2.3
40112000	New pneumatic tyres of rubber, of a kind used on b	2,517	2.1
73063000	Tubes and pipes, welded, circular, of iron or non-	2,505	2.1
87012000	Road tractors for semi-trailers	1,975	1.7
Other Products		79,139	67.2
% of Total August Imports		5.3	
INDIA		53,189	100.0
30049000	Other medicaments of mixed or unmixed products, fo	7,316	13.8
30039000	Other medicaments with >=2 constituents, not for r	3,652	6.9
30032000	Medicaments of other antibiotics, not for retail s	2,705	5.1
39206310	Plates..., of unsaturated polyesters, not reinforc	1,933	3.6
84749000	Parts of machinery of 84.74	1,893	3.6
29280010	Organic derivatives of hydrazine or of hydroxylamine in bulk	1,856	3.5
38085010	Goods of note 1 to this chapter put in forms/packages for retail for use in agric/hortic	1,706	3.2
73089090	Structures and parts of structures, nes, of iron o	1,649	3.1
87042290	Other	1,382	2.6
30042000	Medicaments of other antibiotics, for retail sale	1,164	2.2
Other Products		27,932	52.5
% of Total August Imports		2.4	
Other Destination		489,833	22.1
Total Value of August Imports (cif)		2,212,936	

Source: CSO, International Trade Statistics, 2010

Note: (*) Provisional

Import Market Shares by Regional Groupings, August and July 2010

The Southern African Development Community (SADC) regional grouping was the largest source of Zambia's imports accounting for 62.8 and 68.2 percent in August and July 2010, respectively. Within the SADC region, South Africa was the major source of Zambia's imports in both months with 61.3 percent in August and 61.2 percent in July 2010. Congo DR was the second major source of Zambia's imports with 33.4 and 31.9 percent, in August and July 2010, respectively. Other key market sources were Zimbabwe, Tanzania, and Namibia.

The Common Market for Eastern and Southern Africa (COMESA) grouping of countries was the second largest source of Zambia's imports accounting for 25.7 and 25.9 percent in August and July 2010 respectively. Within COMESA, Congo DR dominated as the main source of Zambia's imports with 81.7 and 83.9 percent in August and July 2010, respectively. Other notable sources were Zimbabwe, Kenya, Egypt Swaziland and Mauritius.

Asia was the third largest source of Zambia's imports accounting for 24.6 and 16.6 percent in August and July 2010 respectively. Within Asia, Kuwait was the dominant market in

August 2010 with 43.4 percent, while India was dominant in July with 25.9 percent. China was the second largest source of Zambia's imports with 21.7 and 25.2 percent in August and July 2010, respectively. Other notable markets in August were United Arab Emirates, India and Japan.

The European Union (EU) was the fourth largest source of Zambia's imports accounting for 6.9 and 10.0 percent in

August and July 2010 respectively. Within the EU, the United Kingdom was the major source of Zambia's imports accounting for 30.8 and 20.7 percent in both months respectively. Germany was the second largest source of Zambia's imports with 15.4 and 13.3 percent in August and July 2010, respectively. Other key markets were Belgium, Netherlands, Greece, Finland and Ireland.

Import Market shares by Major Regional Groupings, August and July 2010

GROUPING	Aug-2010*		GROUPING	Jul-2010®	
	Value (K'Million)	% Share		Value (K'Million)	% Share
SADC	1,390,359	100.0	SADC	1,188,843	100.0
South Africa	852,082	61.3	South Africa	727,596	61.2
Congo DR	463,857	33.4	Congo DR	378,742	31.9
Zimbabwe	26,937	1.9	Zimbabwe	27,669	2.3
Tanzania, United	12,400	0.9	Tanzania, United	24,782	2.1
Namibia	7,249	0.5	Namibia	7,081	0.6
Other SADC	27,833	2.0	Other SADC	22,972	1.9
% of Total August Imports	62.8		% of Total July Imports	68.2	
COMESA	567,727	100.0	COMESA	451,191	100.0
Congo DR	463,857	81.7	Congo DR	378,742	83.9
Kenya	46,046	8.1	Zimbabwe	27,669	6.1
Zimbabwe	26,937	4.7	Kenya	25,096	5.6
Egypt	13,083	2.3	Egypt	6,979	1.5
Swaziland	5,877	1.0	Mauritius	6,744	1.5
Other COMESA	11,927	2.1	Other COMESA	5,961	1.3
% of Total August Imports	25.7		% of Total July Imports	25.9	
ASIA	544,057	100.0	ASIA	290,158	100.0
Kuwait	236,148	43.4	India	75,216	25.9
China	117,828	21.7	China	73,148	25.2
India	53,189	9.8	United Arab Emirates	40,463	13.9
United Arab Emirates	42,309	7.8	Japan	35,562	12.3
Japan	34,273	6.3	Singapore	14,517	5.0
Other ASIA	60,311	11.1	Other ASIA	51,252	17.7
% of Total August Imports	24.6		% of Total July Imports	16.6	
EUROPEAN UNION	153,260	100.0	EUROPEAN UNION	174,539	100.0
United Kingdom	47,255	30.8	United Kingdom	36,185	20.7
Germany	23,597	15.4	Germany	23,165	13.3
Ireland	18,407	12.0	Belgium	21,811	12.5
Finland	14,547	9.5	Netherlands	19,147	11.0
Belgium	13,787	9.0	Greece	15,407	8.8
Other EU	35,667	23.3	Other EU	58,824	33.7
% of Total August Imports	6.9		% of Total July Imports	10.0	
Total Value of August Imports	2,212,936		Total Value of July Imports	1,744,050	

Source: CSO, International Trade Statistics, 2010

Note: (*) Provisional

(R) Revised figures

Some countries are members of both SADC and COMESA

PREPARATIONS FOR THE ZAMBIA 2010 CENSUS HEIGHTEN!

Zambia will, in two weeks time conduct the Census of Population and Housing. This will be the fifth in series of comprehensive Censuses that Zambia has conducted. So far, Zambia has conducted Censuses **in 1969, 1980, 1990 and 2000**. A Census of Population and Housing is the corner stone of the national statistics.

A Census of Population and Housing provides essential data for political representation, social and economic planning, decision-making, monitoring and evaluation. It also provides basic data on size, distribution, socio-economic status and composition of the population over time. The Census also gives information on Housing characteristics.

Preparations for the data collection for this year's Census have reached an advanced stage. Various preparatory activities have been accomplished through the Central Statistical Office. This includes cartographic census field mapping and the training of Master Trainers and Assistant Trainers recruited from various Ministries and Institutions of Government. Supervisors who are mainly basic school teachers have also been recruited and trained.

The training of persons short listed to be enumerators has started today, 30th September, 2010 and is expected to be completed on 10th October 2010.

The Census of Population and Housing will be launched on the 15th of October 2010, by His Excellency, **The President of the Republic of Zambia, Mr Rupiah Bwezani Banda**. The nationwide enumeration exercise will then commence on the 16th October 2010. This exercise is expected to last for almost four weeks. During the Census period, enumerators will visit each and every household to collect information about each household member. Enumerators will also collect data on each and every building found in their assigned work areas. Information to be collected from each household member will include among others, age, sex (i.e., male or female), employment status, literacy levels, mortality and education status.

HELP THE CENSUS HELP YOU, BE COUNTED!

For details, **visit the CSO website:** www.zamstats.gov.zm

SELECTED SOCIO-ECONOMIC INDICATORS

PROJECTED MID-YEAR POPULATION 2000-2010

	2000	2001	2002	2003	2004	2005	2006	2007	2008	2009	2010
Total Population	9,885,591	10,089,492	10,409,441	10,744,380	11,089,691	11,441,461	11,798,678	12,160,516	12,525,791	12,896,830	13,272,553
Population Growth Rate	2.5	3.1	3.1	3.1	3.1	3.1	3	3	2.9	2.9	2.8
Life Expectancy at Birth	50	51.8	51.9	52.4	52.4	52.6	51.9	51.4	51.3	51.2	51.3
POPULATION BY PROVINCE											
Central	1,012,257	1,032,574	1,066,992	1,103,387	1,141,256	1,180,124	1,219,980	1,260,491	1,301,776	1,343,835	1,386,628
Copperbelt	1,581,221	1,611,569	1,662,155	1,714,225	1,767,165	1,820,443	1,874,081	1,927,576	1,980,824	2,034,012	2,088,14
Eastern	1,306,173	1,348,070	1,391,690	1,436,120	1,482,290	1,530,118	1,579,960	1,631,890	1,684,910	1,740,180	1,797,787
Luapula	775,353	791,067	817,326	845,076	873,969	903,746	934,317	965,605	997,579	1,030,572	1,064,422
Lusaka	1,391,329	1,413,010	1,453,690	1,495,730	1,538,000	1,579,769	1,620,730	1,660,070	1,697,730	1,733,830	1,768,205
Northern	1,258,696	1,277,250	1,315,650	1,357,540	1,401,340	1,445,730	1,490,330	1,534,170	1,577,310	1,619,980	1,662,241
North-western	583,350	596,010	616,496	638,004	660,322	683,367	707,074	731,351	756,261	781,800	808,046
Southern	1,212,124	1,235,134	1,275,470	1,318,161	1,362,382	1,407,433	1,453,324	1,499,462	1,545,880	1,592,864	1,706,468
Western	765,088	774,929	795,247	816,983	839,757	863,294	887,540	912,226	937,419	963,107	989,345

Source: CSO, Population Projections Report

Note: 2000 figures are from the 2000 Census of Population and Housing while the 2001 to 2010 figures are the Population Projections Report

GROSS DOMESTIC PRODUCT 2001-2009

	2001	2002	2003	2004	2005	2006	2007	2008	2009*
Total GDP in current prices (K' billion)	13,194	16,324	20,551	25,993	32,042	38,561	46,195	55,079	64,326
Total GDP in constant 1994 prices (K' billion)	2,620	2,707	2,845	2,999	3,159	3,356	3,564	3,765	4,003
Population	10,089,492	10,409,441	10,744,380	11,089,691	11,441,461	11,798,678	12,160,516	12,525,791	12,896,830
GDP per capita in current prices	1,307,669	1,568,234	1,912,731	2,343,902	2,800,474	3,268,231	3,798,753	4,397,227	4,987,744
GDP per capita in constant 1994 prices	259,656	260,024	264,835	270,454	276,141	284,450	293,079	300,615	310,388
GDP growth rates in constant 1994 prices	4.9	3.3	5.1	5.4	5.3	6.2	6.2	5.7	6.3
Growth in GDP per capita at constant prices	1.8	0.1	1.9	2.1	2.1	3.0	3.0	2.6	3.3
PERCENTAGE CHANGES IN GROSS DOMESTIC PRODUCT BY KIND OF ECONOMIC ACTIVITY - CONSTANT 1994 PRICES									
KIND OF ECONOMIC ACTIVITY	2001	2002	2003	2004	2005	2006	2007	2008	2009*
Agriculture, Forestry and Fishing	(2.6)	(1.7)	5.0	4.3	(0.6)	2.2	0.4	2.6	7.1
Agriculture	(6.0)	(6.3)	8.0	6.1	(4.0)	3.0	(2.7)	1.9	12.4
Forestry	4.3	4.3	4.3	4.3	3.6	1.4	3.7	3.7	3.6
Fishing	(5.0)	(0.7)	(0.7)	(0.7)	0.5	1.8	1.8	1.8	1.5
Mining and Quarrying	14.0	16.4	3.4	13.9	7.9	7.3	3.6	2.5	15.8
Metal Mining	15.0	17.1	3.3	13.5	7.1	9.0	4.4	2.5	15.9
Other mining and quarrying	(15.0)	(13.0)	10.7	35.8	42.9	(45.8)	(45.5)	(3.5)	1.8
PRIMARY SECTOR	1.9	3.8	4.5	7.5	2.5	4.1	1.7	2.5	10.5
Manufacturing	4.2	5.7	7.6	4.7	2.9	5.7	3.0	1.8	2.5
Food, Beverages and Tobacco	5.3	5.4	8.6	5.8	3.6	8.9	7.6	3.0	4.4
Textile, and leather industries	2.3	6.2	3.2	(1.9)	(2.9)	(1.3)	(19.5)	(23.6)	(18.9)
Wood and wood products	5.7	7.5	11.4	4.2	3.6	0.7	3.7	12.1	6.6
Paper and Paper products	3.8	2.2	8.2	2.5	10.6	0.3	0.7	29.3	8.8
Chemicals, rubber and plastic products	4.3	10.0	4.9	8.5	3.2	4.6	4.2	5.2	1.5
Non-metallic mineral products	3.5	1.7	14.9	14.4	7.4	(5.2)	2.3	5.0	9.0
Basic metal products	(18.0)	4.3	15.1	3.1	(2.0)	1.9	(4.8)	23.0	0.1
Fabricated metal products	(8.0)	(4.0)	5.3	4.8	7.4	5.0	7.8	(2.5)	(4.8)
Electricity, Gas and Water	12.6	(5.2)	0.4	(1.7)	5.4	10.5	1.0	(1.2)	8.6
Construction	11.5	17.4	21.6	20.5	21.2	14.4	20.0	8.7	15.5
SECONDARY SECTOR	7.5	7.2	10.8	9.1	10.0	9.8	10.0	4.7	9.4
Wholesale and Retail trade	5.4	5.0	6.1	5.0	2.4	2.0	2.4	2.5	3.0
Restaurants, Bars and Hotels	24.4	4.9	6.9	6.4	11.7	16.1	9.6	5.0	(14.5)
Transport, Storage and Communications	2.8	1.8	4.8	6.4	11.0	22.1	19.2	15.8	3.1
Rail Transport	7.6	6.0	(8.1)	(1.8)	(11.6)	(2.6)	(18.7)	(20.2)	(31.2)
Road Transport	0.5	1.9	3.9	4.2	6.3	6.4	6.4	13.2	13.3
Air Transport	10.6	(8.4)	3.9	18.1	10.8	33.5	24.1	13.7	(29.0)
Communications	0.6	7.9	10.0	5.0	23.2	40.5	33.6	21.1	12.0
Financial Institutions and Insurance	0.1	3.5	3.5	3.5	3.3	4.0	4.1	8.7	5.0
Real Estate and Business services	3.5	4.4	4.0	4.0	3.2	3.2	3.1	3.1	3.1
Community, Social and Personal Services	5.8	1.6	1.6	0.6	11.4	9.0	12.5	11.7	6.8
Public Administration & Defence/Public sanitary services	1.0	(1.0)	0.2	0.2	6.2	(8.7)	14.8	2.2	(10.4)
Education	13.5	7.0	3.0	0.3	22.2	35.3	13.6	19.6	22.5
Health	16.5	1.0	2.5	(0.8)	(2.2)	5.2	1.0	18.3	3.3
Recreation, Religious, Culture	10.0	(2.0)	4.5	4.3	34.1	22.8	9.3	26.7	8.5
Personal Services	3.5	3.5	3.5	3.5	3.5	3.5	3.5	3.5	3.5
TERTIARY SECTOR	4.7	3.8	4.5	4.2	5.4	6.7	7.1	7.1	3.0
Less: FISIM	2.5	2.5	2.5	2.5	2.5	2.5	2.5	2.5	2.5
Total Gross Value Added	4.6	4.6	6.0	6.2	5.8	7.0	6.7	5.7	6.3
Taxes less subsidies	7.0	(6.7)	(2.7)	(2.7)	(0.1)	(3.1)	(0.3)	5.7	6.3
TOTAL G.D.P. AT MARKET PRICES	4.9	3.3	5.1	5.4	5.3	6.2	6.2	5.7	6.3

Source: CSO, National Accounts Statistics *Preliminary

Index of industrial production for 2008 and the first two quarters of 2009

PERIOD	TOTAL INDEX	MINING				MANUFACTURING									TOTAL ELECTRICITY
		TOTAL MINING	Coal	Non-ferrous Ore	Stone Quarrying	TOTAL MANUFACTURING	Food, Beverages & Tobacco	Textile, Clothing & Leather	Wood & Wood Products	Paper & Paper Products	Chemicals, Rubbers & Plastics	Non-metallic Mineral Products	Basic Metal Industries	Fabricated Metal Products	
WEIGHT	1.000	0.350	0.005	0.242	0.103	0.511	0.235	0.060	0.006	0.017	0.059	0.025	0.009	0.100	0.139
2008 Q1	159.0	243.1	7.4	227.8	289.4	113.5	131.9	54.8	205.3	107.4	134.2	125.4	80.2	88.8	114.6
2008 Q2	158.1	219.5	0.1	197.0	281.9	125.3	169.0	37.3	216.8	123.1	98.2	152.7	86.6	82.5	124.1
2008 Q3	163.5	217.9	0.0	196.2	278.3	137.8	189.5	21.7	159.5	88.4	95.0	155.1	84.8	118.3	121.8
2008 Q4	164.0	209.8	0.0	196.8	249.6	142.5	196.4	48.7	167.2	135.2	76.3	164.2	68.9	112.0	127.8
2008	161.1	222.5	1.9	204.4	274.8	129.8	171.7	40.6	187.2	113.5	101.0	149.3	80.1	100.4	122.1
2009 Q1	174.0	276.3	0.0	265.9	312.8	114.7	136.9	45.5	219.4	118.8	137.1	136.7	82.1	81.2	134.9
2009 Q2	177.2	265.0	83.1	250.4	307.4	129.2	177.3	29.2	230.3	132.1	98.9	166.6	84.9	81.9	132.8
2008 (Q1+Q2)	158.5	231.3	3.8	212.4	285.6	119.4	150.4	46.0	211.0	115.3	116.2	139.1	83.4	85.6	119.4
2009 (Q1+Q2)	175.6	270.7	41.5	258.2	310.1	122.0	157.1	37.3	224.9	125.4	118.0	151.6	83.5	81.5	133.9
YEAR ON YEAR PERCENTAGE CHANGE															
2008 Q1	8.5	17.5	(12.8)	15.8	20.7	3.3	2.2	(10.2)	16.4	16.3	15.2	6.5	24.3	(2.4)	(11.5)
2008 Q2	3.2	3.8	(99.0)	(1.7)	14.4	3.7	4.2	(12.1)	26.4	32.8	2.9	3.0	41.8	(3.5)	(0.8)
2008 Q3	5.5	8.7	(100.0)	(6.7)	49.5	3.0	6.3	(34.4)	(3.1)	27.6	(1.2)	1.1	26.2	(2.5)	2.0
2008 Q4	2.8	7.1	(100.0)	2.8	16.4	(0.9)	(0.4)	(35.7)	7.7	39.5	6.0	9.7	1.6	(1.8)	1.3
2008	4.9	9.3	(77.5)	2.4	23.9	2.2	3.0	(23.4)	12.1	29.3	6.2	5.0	23.0	(2.5)	(2.4)
*2009 Q1	9.5	13.7	(100.0)	16.8	8.1	1.1	3.8	(17.0)	6.9	10.6	2.1	9.0	2.3	(8.5)	17.7
**2009 Q2	12.1	20.7	82990.9	27.1	9.0	3.2	4.9	(21.7)	6.2	7.3	0.6	9.1	(1.9)	(0.8)	7.0
2008 (Q1+Q2)	5.8	10.5	(60.5)	7.0	17.5	3.5	3.3	(11.0)	21.3	24.5	9.7	4.5	32.8	(3.0)	(6.3)
2009 (Q1+Q2)	10.8	17.0	1006.9	21.5	8.6	2.2	4.4	(18.9)	6.6	8.8	1.5	9.0	0.1	(4.8)	12.2

Source: CSO Index of Industrial Production

Note: () negative

*Revised

**Preliminary

INFLATION TRENDS 2000-2009

Year	Year on Year Inflation
1990	110.6
1991	99.7
1992	180.7
1993	128.1
1994	38.3
1995	46.0
1996	35.2
1997	18.6
1998	30.6
1999	20.6
2000	30.1
2001	18.7
2002	26.7
2003	17.2
2004	17.5
2005	15.9
2006	8.2
2007	8.9
2008	16.6
2009	9.9

Source: CSO, Prices Statistics

ROAD TRAFFIC ACCIDENT POLICE REPORTS, 2006 TO 2007

POLICE DIVISION/PROVINCE	NUMBER OF ROAD TRAFFIC ACCIDENTS			NUMBER OF PERSONS KILLED			NUMBER OF PERSONS SERIOUSLY INJURED			NUMBER OF PERSONS SLIGHTLY INJURED			ADMISSION OF GUILTY RAISED (kwacha)	
	2006	2007	% Change	2006	2007	% Change	2006	2007	% Change	2006	2007	% Change	2006	2007
Central	1,047	1,382	32	191	158	(17)	520	548	5	376	269	(28)	214,433,570	274,002,608
Copperbelt	4,105	5,400	32	265	301	14	1,031	1,300	26	1,250	1,664	33	1,888,762,000	2,907,262,000
Eastern	632	693	10	79	85	8	159	129	(19)	140	207	48	287,050,916	359,249,000
Luapula	185	190	3	54	51	(6)	166	203	22	17	41	141	212,895,100	332,581,000
Lusaka	10,513	10,889	4	335	413	23	938	915	(2)	2,177	2,158	(1)	1,569,921,500	1,695,469,000
N/Western	549	735	34	32	56	75	185	223	21	126	229	82	77,666,000	203,912,000
Nothern	443	569	28	89	71	(20)	366	391	7	131	217	66	208,817,000	248,637,500
Southern	1,279	1,431	12	100	105	5	407	290	(29)	234	160	(32)	958,622,500	1,106,798,000
Western	342	401	17	25	26	4	191	182	(5)	127	132	4	130,000,000	187,608,500
TOTAL	19,095	21,690	14	1,170	1,266	8	3,963	4,181	6	4,578	5,077	11	5,548,168,586	7,315,519,608

Source: Zambia police, road traffic section

NUMBER OF MOTOR VEHICLE ACCIDENTS BY PROVINCE FROM 2004 TO 2008

Province	2004	2005	2006	2007	2008
Lusaka	6222	6646	10513	10889	11180
Copperbelt	3173	3530	4105	5400	3442
Central	918	937	1047	1382	1311
Southern	1130	1010	1279	1431	1234
N/Western	537	171	549	693	882
Eastern	293	1267	632	401	469
Western	314	260	342	735	470
Northern	254	101	443	569	493
Luapula	164	153	185	190	246
Total	13005	14075	19095	21690	19727

Source: RTSA/Zambia Police

VEHICLE POPULATION, NUMBER OF ACCIDENTS AND NUMBER OF FATALITIES PER 10,000 VEHICLES

Year	Number of vehicles registered	Number of Accidents	Number of fatalities	Number of Accidents per 10, 000 Vehicles	Number of Fatalities per 10, 000 Vehicles
2004	111,460	13,005	892	1,167	80
2005	140,225	14,075	869	1,004	62
2006	183,701	19,095	1,176	1,039	64
2007	227,950	21,690	1,277	952	56
2008	277,870	19,727	1,238	710	45

Source: RTSA/Zambia Police

POPULATION OF MOTOR VEHICLES BY CATEGORY FOR THE YEAR 2008

Vehicle Category	Number	Percentage
Motorcycle	7113	2.6
Motor tricycle	83	0.0
Light passenger vehicle	167055	60.1
Heavy passenger vehicle	5615	2.0
Light load Vehicle(GVM 3500KG or less)	56935	20.5
Agriculture Tractor	1167	0.4
Agriculture Trailer	167	0.1
Heavy load Vehicle(GVM >3500KG)	34900	12.6
Trailers	4835	1.7
Total	277870	100.0

Source: RTSA/Zambia Police

ZAMBIA'S ANNUAL TOTAL EXPORTS IN ABSOLUTE ZAMBIAN KWACHA AND U S DOLLAR 2000-2009

Flow	Total Exports	
Year	ZMK	USD
2000:	2,716,557,648,136	869,485,416
2001:	3,537,206,913,419	978,788,277
2002:	4,069,916,925,012	944,356,533
2003:	4,642,039,643,203	979,298,782
2004:	7,526,280,115,612	1,577,240,766
2005:	9,612,909,460,871	2,176,641,598
2006:	13,410,945,234,225	3,681,524,702
2007:	18,399,133,746,013	4,617,454,325
2008:	18,653,009,286,684	5,098,688,004
2009:	21,031,172,451,720	4,241,014,377
Total:	82,567,998,973,175	20,923,478,403

NOTE: 2000-2007 FIGURES ARE UNDER SPECIAL TRADE SYSTEM WHILE 2008 AND 2009 FIGURES ARE UNDER GENERAL TRADE SYSTEM

Source: CSO, *International Trade Statistics*, 2010

Note: (*) Provisional
(R) Revised figures

ZAMBIA'S ANNUAL IMPORTS IN ABSOLUTE ZAMBIAN KWACHA AND U S DOLLAR 2000-2009

Year	ZMK	USD
2000:	2,751,563,199,592	871,386,492
2001:	3,900,496,869,495	1,079,955,769
2002:	4,732,881,915,324	1,103,070,912
2003:	7,439,867,256,553	1,573,309,968
2004:	10,279,302,826,391	2,150,649,040
2005:	11,466,668,652,907	2,579,688,391
2006:	11,049,770,813,126	3,023,996,472
2007:	15,945,289,847,742	4,006,980,387
2008:	18,476,489,239,723	5,060,482,666
2009:	18,941,257,150,282	3,792,668,160
Total:	86,042,330,620,853	21,449,520,097

Source: CSO, *International Trade Statistics*, 2010

Note: (*) Provisional
(R) Revised figures

Interest Rates

End of Period	COMMERCIAL BANKS		CENTRAL BANK	TREASURY BILLS
	Weighted Lending Rates	Lending Rates	Interest Rates	YIELD RATE 91 DAYS
1990	-	-	34.0	-
1991	-	-	47.0	-
1992	-	-	54.0	-
1993	-	-	72.0	-
1994	36.2	-	25.4	-
1995	47.7	-	51.5	-
1996	57.4	69.0	70.0	-
1997	37.9	49.3	23.3	-
1998	37.4	37.0	43.4	-
1999	42.6	40.4	46.2	-
2000	37.6	45.9	44.1	-
2001	46.7	54.6	52.5	-
2002	42.5	50.0	34.0	-
2003	38.0	45.3	21.3	-
2004 MAR	31.8	39.1	9.6	-
Jun	29.8	36.9	7.8	-
Sep	30.0	37.4	14.7	-
Dec	29.8	37.1	18.3	-
2005 JAN	28.0	35.3	18.4	-
Feb	28.6	35.9	18.8	-
Mar	28.1	35.4	18.2	-
Apr	28.0	35.1	17.8	-
May	28.1	35.1	16.0	-
Jun	28.6	35.6	15.9	-
Jul	28.2	35.2	16.5	-
Aug	28.3	35.3	16.4	-
Sep	28.2	34.9	16.9	-
Oct	28.2	34.5	16.9	-
Nov	28.2	34.5	17.4	-
Dec	27.6	33.9	17.1	-
2006 JAN	26.7	33.0	17.1	15.1
Feb	26.4	32.7	16.1	14.1
Mar	25.4	31.6	14.7	12.7
Apr	25.2	31.4	11.0	9.0
May	22.8	29.0	8.4	6.4
Jun	21.6	27.8	7.5	5.5
Jul	21.7	27.9	8.6	6.6
Aug	21.7	27.9	9.6	7.6
Sep	21.6	27.8	10.9	8.6
Oct	21.6	27.8	12.3	10.3
Nov	21.6	27.8	11.1	9.1
Dec	21.6	27.9	10.7	8.7
2007 JAN	21.0	27.3	11.1	9.1
Feb	21.0	27.3	11.8	9.8
Mar	20.3	26.4	12.8	10.8
Apr	18.2	24.3	14.0	12.0
May	18.2	24.3	13.2	11.2
Jun	18.2	24.3	12.9	10.9
Jul	18.2	24.3	13.6	11.6
Aug	18.2	24.3	13.4	11.4
Sep	18.2	24.3	14.0	12.0
Oct	18.2	24.3	13.5	11.5
Nov	18.2	24.3	12.8	10.8
Dec	18.3	24.4	13.5	11.5
2008 JAN	18.4	24.5	13.2	11.2
Feb	18.3	24.4	12.6	10.6
Mar	18.2	24.3	12.9	10.9
Apr	18.2	24.3	13.0	11.0
May	18.2	24.3	14.1	12.1
Jun	18.5	24.6	14.1	12.1
Jul	18.6	24.7	14.1	12.1

End of Period	COMMERCIAL BANKS		CENTRAL BANK	TREASURY BILLS
	Weighted Lending Rates	Lending Rates	Interest Rates	YIELD RATE 91 DAYS
Aug	18.6	24.7	14.3	12.3
Sep	19.6	25.7	14.5	12.5
Oct	20.6	26.7	15.3	13.3
Nov	20.6	26.7	12.0	13.9
Dec	20.8	26.9	15.9	13.9
2009 JAN	20.9	27.0	15.8	13.8
Feb	20.9	27.0	16.3	14.3
Mar	20.9	27.0	16.0	14.0
Apr	20.7	26.6	16.2	14.2
May	21.6	27.8	15.9	13.9
Jun	22.4	28.9	15.6	13.6
Jul	22.4	28.9	17.1	15.1
Aug	23.0	29.5	18.1	16.1
Sep	23.1	29.6	17.5	15.5
Oct	23.1	29.6	16.6	14.6
Nov				
Dec				

Source: Bank of Zambia

Surveys/Activities Being undertaken

- ☞ 2010 Census Training of Enumerators
- ☞ 2008 Labour-force Survey
- ☞ 2010 Living Conditions Monitoring Survey VI

Available

- ☞ 2009/2010 Crop Forecasting Survey
- ☞ 2009 Zambia Sexual Behaviour Survey (ZSBS)
- ☞ Employment and Earnings Inquiry Report, January 2006
- ☞ National Accounts Statistics Bulletin No.9 2005
- ☞ Labour-Force Survey Report, 2005
- ☞ 2007 Zambia Demographic and Health Survey (ZDHS)

Subscribe for your free electronic copy of “The Monthly” online at www.zamstats.gov.zm

The Editorial Team would like to thank all Media Institutions and Users of.....

“The Monthly Bulletin”

Thank you for supporting us

Secretariat

John Kalumbi	- Acting Director
Peter Mukuka	- Deputy Director
Mate Mate	- Principal Research Officer
Linda N. Chonya	- Senior Research Officer
Etambuyu Lukonga	- Documentalist
Anthony Nkole	- Desktop Publishing Officer
Perry Musenge	- Assistant Desktop Publishing Officer
Petronella Kaputu	- Press Liaison Officer
Chisuwa S. Nalishuwa	- Assistant Field Co-ordinator
Cecilia M. Munjita	- Librarian
Humphrey Zimba	- Dissemination Officer

Editorial Team

John Kalumbi	- Acting Director
Peter Mukuka	- Deputy Director (IRD)
Modesto Banda	- Deputy Director (AG)
William Mayaka	- Deputy Director (SOC)
Goodson Sinyenga	- Deputy Director (ECON)
Shebo Nalishhebo	- Statistician
Josephine C. Banda	- Statistician
Gerson Banda	- Statistician
Palver Sikanyiti	- Statistician
Lubinda Mukata	- Statistician