



Republic of Zambia

The Monthly

Central Statistical Office

Volume 110

Website: www.zamstats.gov.zm

May, 2012

Foreword

Welcome to the Monthly presentation organised by the Dissemination Branch of the Central Statistical Office (CSO). The CSO embarks on vigorous information delivery strategy to major stakeholders and the media institutions in order to increase utilisation of statistical products and services. The office produces a number of statistical products in the Economic, Social, Agricultural and Environmental areas. The information collected in these areas may be used for various purposes including policy formulation, planning, implementation, monitoring and evaluation of programmes and projects.

This Monthly publication is an attempt to provide highlights of CSO's work and how it can help media institutions and the general public to make use of data and information for sustainable national development and decision-making.

I would like to urge our readers and users of statistical information to send to us any comments that may enhance statistical production and contribute to the improvement of this bulletin.

John Kalumbi
Director of Census and Statistics

31st May, 2012

Inside this Issue

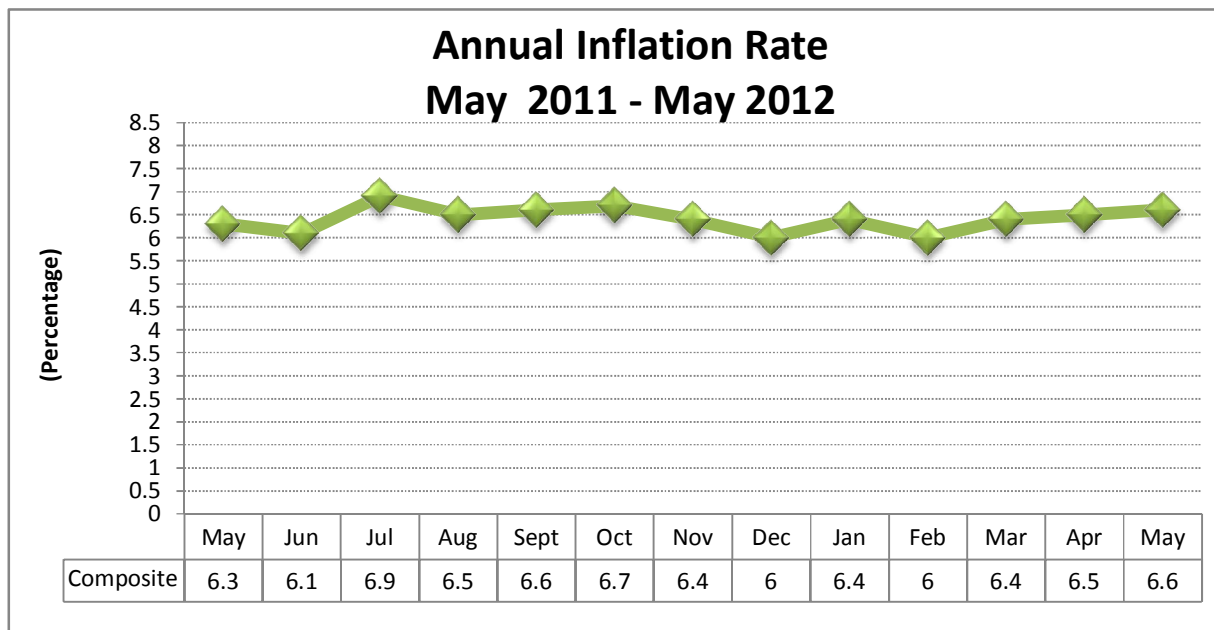
- **May Inflation Rate increases to 6.6 percent.**
- **April 2012 records Trade Surplus**
- **Industrial Output Performance in 2011**
- **2010 Census Final Results Out!**
- **The National Food Balance Sheet for the 2011-2012 Agriculture Marketing Season**
- **Selected Socio - Economic Indicators**

INFLATION

May Inflation Rate increases to 6.6 percent.

The annual rate of inflation derived from the revised all items Consumer Price Index (CPI) was recorded at 6.6 percent in May 2012, compared to 6.5 percent recorded in April 2012. This means that on average prices increased by 6.6 percent

between May 2011 and May 2012. The increase is attributed to increases in food prices. On a monthly basis, the increase in prices averaged 0.4 percent between April 2012 and May 2012.



Movements in inflation rates for CPI Main Groups

Between April 2012 and May 2012, the annual rate of inflation increased for Food and non-alcoholic beverages; Alcoholic beverages and tobacco; Education; and Miscellaneous goods and services. The annual rate of inflation

decreased for Clothing and Footwear; Housing, water, electricity, gas and other fuels; Furniture, household equipment and routine house maintenance; Health; Transport; Communication; Recreation and culture; and Restaurant and hotels.

	Weights	Index (2009=100)			Percentage change over one month			Percentage change over 12 months		
		March 2012	April 2012	May 2012	March 2012	April 2012	May 2012	March 2012	April 2012	May 2012
CPI (All items)	1000.0	120.8	121.6	122.1	1.5	0.7	0.4	6.4	6.5	6.6
01. Food and non-alcoholic beverages	534.9	117.6	118.2	118.6	1.9	0.5	0.3	6.4	6.4	6.8
02. Alcoholic beverages & tobacco	15.2	110.8	111.6	111.9	0.3	0.8	0.3	3.5	2.4	3.3
03. Clothing and footwear	80.8	124.4	125.9	126.3	1.4	1.2	0.3	7.9	6.4	6.0
04. Housing, water, electricity, gas and other fuels	114.1	136.3	137.2	138.0	1.2	0.7	0.5	4.9	5.7	5.3
05. Furniture, household, equipment and routine house maintenance	82.4	120.7	121.9	123.1	0.6	1.0	1.0	7.7	8.9	8.6
06. Health	8.1	123.5	124.3	124.4	0.6	0.6	0.1	7.4	6.2	5.6
07. Transport	58.1	123.8	124.5	124.7	1.1	0.5	0.2	7.8	7.2	6.6
08. Communication	12.9	104.1	104.1	104.0	0.0	0.1	-0.1	1.2	1.2	1.1
09. Recreation and Culture	13.8	118.7	119.3	121.2	0.6	0.5	1.5	8.1	8.0	7.1
10. Education	26.6	122.9	123.3	123.8	0.3	0.2	0.2	7.9	8.2	9.3
11. Restaurant and hotel	3.8	118.0	118.9	120.1	0.8	0.6	0.5	3.0	3.3	3.2
12. Miscellaneous goods and services	49.7	115.9	117.5	119.5	1.4	1.0	0.7	4.7	5.6	6.3

Source: CSO Prices Statistics

Contributions of different Items to overall inflation

Of the total 6.6 percent annual inflation rate recorded in May 2012, food items accounted for 3.5 percentage points, while non-food

products in the Consumer Price Index (CPI) accounted for a total of 3.1 percentage points.

Percentage Points Contributions of different items to overall inflation

Items	April 2012	May 2012
Food and Non-alcoholic beverages	3.3	3.5
Alcoholic beverages and Tobacco	0.0	0.1
Clothing and footwear	0.6	0.5
Housing, Water, Electricity, Gas and Other fuels	0.7	0.7
Furnishings and Household Equipment	0.7	0.7
Health	0.1	0.1
Transport	0.5	0.4
Communication	0.0	0.0
Recreation and Culture	0.1	0.1
Education	0.2	0.2
Restaurant and Hotel	0.0	0.0
Miscellaneous Goods and Services	0.3	0.3
All items	6.5	6.6

Source: CSO Prices Statistics

The Annual Food and Non –food Inflation Rate

The annual food inflation rate was recorded at 6.8 percent in May 2012. This is an increase from 6.4 percent recorded in April 2012. The annual

non-food inflation rate was recorded at 6.3 percent in May, 2012 from 6.5 percent recorded in April 2012.

Index Numbers and Annual Inflation Rates: Food and Non food Items

Month	All items CPI		Food items		Non-food items	
	Index	Annual Inflation Rate	index	Annual Inflation Rate	index	Annual Inflation Rate
2011 Jan	111.6	6.3	108.9	4.2	114.8	8.6
Feb	112.4	6.5	109.4	4.3	115.8	9.1
Mar	113.6	6.6	110.5	4.1	117.1	9.4
Apr	114.2	6.3	111.1	3.7	117.8	9.2
May	114.6	6.3	111.0	3.5	118.7	9.5
Jun	114.5	6.1	110.3	3.8	119.4	8.7
Jul	115.9	6.9	111.9	5.0	120.5	8.9
Aug	116.6	6.5	112.1	5.8	121.8	7.3
Sep	117.0	6.6	112.5	6.1	122.2	7.3
Oct	116.8	6.7	112.2	6.3	122.1	7.2
Nov	116.9	6.4	112.7	6.0	121.8	6.8
Dec	117.5	6.0	113.4	5.3	122.2	6.6
2012 Jan	118.8	6.4	115.5	6.1	122.5	6.8
Feb	119.1	6.0	115.4	5.5	123.3	6.5
Mar	120.8	6.4	117.6	6.4	124.6	6.4
Apr	121.6	6.5	118.2	6.4	125.5	6.5
May	122.1	6.6	118.6	6.8	126.2	6.3

Source: CSO Prices Statistics

Provincial Contribution to overall inflation (6.6 percent)

The largest provincial contribution to annual inflation of 6.6 percent recorded in May 2012, was Copperbelt province with 1.7 percentage points.

The lowest provincial contribution to the annual inflation in May 2012 came from the Northern Province which contributed 0.1 percentage points.

Lusaka province followed with a contribution of 1.6 percentage points.

CONTRIBUTION TO ANNUAL INFLATION BY PROVINCE

Province	April 2012	May 2012
Central	0.5	0.6
Copper belt	1.4	1.7
Eastern	0.8	0.9
Luapula	0.5	0.4
Lusaka	1.8	1.6
Northern/Muchinga	0.2	0.1
North Western	0.3	0.2
Southern	0.7	0.8
Western	0.3	0.3
All items	6.5	6.6

Source: CSO Prices Statistics

Note: Northern and Muchinga provinces are combined as there are no expenditure weights available for Muchinga province. The weights for Muchinga province will be derived from the next household expenditure survey.

Changes in Inflation Rates for Provinces

Annual rate of inflation increased for Central, Copper belt, Eastern and Southern provinces between April and May 2012. Meanwhile, the annual rate of

inflation decreased for Luapula, Lusaka, Northern/Muchinga, North Western and Western provinces.

Provincial Consumer Price Indices and Inflation Rate

	Weights	Index (2009=100)			Percentage change over one month			Percentage change over 12 months		
		Mar 2012	Apr 2012	May 2012	Mar 2012	Apr 2012	May 2012	Mar 2012	Apr 2012	May 2012
Province	1000.0	120.8	121.6	122.1	1.5	0.7	0.4	6.4	6.5	6.6
Central	107.19	120.4	121.3	120.7	1.9	0.8	-0.5	3.0	4.0	5.4
Copperbelt	219.68	119.2	120.6	121.8	1.0	1.2	1.0	5.8	6.4	7.9
Eastern	88.98	123.8	124.5	125.7	1.4	0.5	1.0	10.9	9.8	10.7
Luapula	50.60	123.1	123.9	122.6	0.5	0.7	-1.0	7.7	8.4	7.9
Lusaka	283.89	121.6	121.8	121.9	1.9	0.2	0.1	6.6	6.2	5.7
Northern/Muchinga	65.72	120.5	120.8	120.0	2.2	0.2	-0.6	7.2	3.6	1.9
North Western	32.33	120.2	121.3	120.4	1.5	0.9	-0.7	7.6	9.3	5.2
Southern	109.19	121.6	122.3	124.3	1.3	0.6	1.6	5.8	6.3	7.0
Western	42.42	115.6	117.8	119.4	0.4	1.9	1.3	5.5	7.5	6.1

Source: CSO Prices Statistics

Note: Northern and Muchinga provinces are combined as there are no expenditure weights available for Muchinga province. The weights for Muchinga province will be derived from the next household expenditure survey.

National Average Prices of Selected Products.

A comparison of retail prices between April and May 2012 shows that the national average price of a 1kg of dried kapenta (Chisense) increased by 17.9 percent, from K49, 890 to K58, 816. The national average price of 1kg of dressed chicken increased also by 4.7 percent, from K17, 466 to K18, 286. The national average price of 1kg of cabbage

increased by 7.8 percent, from K1, 994 to K2, 149.

The national average price of a 25 kg bag of roller mealie meal reduced by 4.5 percent, from K32, 733 to K31, 268. The national average price of a 20 litre tin of maize grain reduced by 4.0 percent, from K18,618 to K17,866.

National Average Prices for selected Products and Months

Product Description	2012					Percentage Change
	January 2012	February 2012	March 2012	April 2012	May 2012	
Breakfast Mealie Meal	43 747	42 828	44 388	42 413	41 969	-1.0
Roller Mealie Meal	33 587	33 361	32 858	32 733	31 268	-4.5
Maize grain	19 428	19 308	19 487	18 618	17 866	-4.0
Rice Local	8 169	8 297	8 493	8 844	8 368	-5.4
Rice Imported	19 901	16 950	16 878	18 340	19 861	8.3
Millet	9 111	10 302	9 575	9 612	9 167	-4.6
Sorghum	7 556	10 363	10 403	8 577	7 191	-16.2
Fillet Steak	39 660	37 163	37 461	36 018	38 972	8.2
Rump Steak	34 872	34 074	34 136	33 993	35 677	5.0
Brisket	27 215	27 208	26 624	26 997	27 635	2.4
Mixed Cut	24 362	24 415	25 233	24 649	25 302	2.6
T-bone	32 850	33 157	33 525	33 277	33 882	1.8
Beef Sausages	31 729	31 842	31 204	29 636	30 404	2.6
Mince Meat	32 616	31 455	31 223	31 869	32 557	2.2
Ox-liver	23 738	23 444	23 635	24 235	24 486	1.0
Chicken Frozen	16 474	16 989	17 206	17 466	18 286	4.7
Chicken Live	14 581	14 467	14 775	14 986	15 474	3.3

Product Description	2012					Percentage Change
	January 2012	February 2012	March 2012	April 2012	May 2012	May 2012/April 2012
Frozen Fish (Bream)	16 790	16 026	15 633	16 526	16 614	0.5
Buka Buka	16 689	16 905	17 179	17 485	17 515	0.2
Fresh Kapenta	6 555	7 077	7 008	7 362	7 877	7.0
Dried Bream	40 404	39 902	48 715	47 714	45 647	-4.3
Dried Kapenta Mpulungu	62 814	65 329	63 333	71 534	75 250	5.2
Dried Kapenta Siavonga	64 795	66 352	72 500	68 971	70 666	2.5
Dried Kapenta Chisense	48 306	50 501	42 963	49 890	58 816	17.9
Pilchards Lucky Star	6 543	6 451	6 377	6 518	6 524	0.1
Eggs	8 978	8 878	8 898	8 754	8 786	0.4
Rape	3 503	3 350	3 404	3 261	3 348	2.7
Pumpkin Leaves	3 122	2 887	2 759	3 103	3 530	13.8
Sweet Potato Leaves	3 849	3 748	3 722	3 488	3 449	-1.1
Lettuce	2 963	1 677	2 967	5 996	4 905	-18.2
Spinach	3 643	3 824	3 954	3 348	2 653	-20.8
Chinese Cabbage	2 993	2 696	2 760	2 444	2 644	8.2
Cassava Leaves	2 035	2 335	2 243	2 525	2 554	1.1
Okra	6 610	5 587	5 312	5 304	5 708	7.6
Cabbage	2 031	1 965	1 980	1 994	2 149	7.8
Tomatoes	4 417	4 586	5 153	5 363	5 206	-2.9
Cucumber	3 837	3 652	2 856	2 569	3 382	31.6
Impwa	3 451	3 339	3 206	3 141	3 519	12.0
Green pepper	7 155	7 253	5 838	7 228	8 929	23.5
Pumpkin	4 009	1 920	1 780	1 595	1 608	0.8
Onion	5 687	5 912	6 388	7 219	7 352	1.8
Dried beans	11 042	11 559	11 118	10 338	10 179	-1.5
Irish potatoes	4 885	5 003	4 532	4 343	4 420	1.8
Sweet potatoes	3 881	3 495	2 016	1 775	1 793	1.0
Air Fare Domestic	899 600	934 200	934 200	934 200	916 900	-1.9
Single room 3 & 5 star	801 864	864 485	903 493	882 766	815 706	-7.6

Source: CSO Prices Statistics

INTERNATIONAL MERCHANDIZE TRADE

April 2012 records Trade Surplus

Zambia recorded a trade surplus valued at K129.6 Billion in April 2012, compared to K79.6 Billion recorded in March 2012. This means that the country exported more in April 2012 than it imported, in nominal terms.

A comparison between March 2012 and April 2012 indicates a nominal increase of 38.6 percent in the trade surplus from

K79.6 Billion in March 2012 to K129.6 Billion in April 2012.

Since January 2012 the country has had monthly trade surpluses with the highest valued at K348.8 Billion recorded in January 2012, and the lowest valued at K47.4 Billion in February 2012.

Total Exports (fob) and Imports (cif), January to April 2012*, (K' Millions)

Months	Imports(cif)	Domestic Exports(fob)	Re-Exports(fob)	Total Exports(fob)	Trade Balance
January	3,988,283	4,221,775	115,272	4,337,047	348,764
February	3,573,649	3,564,055	56,947	3,621,001	47,352
March®	3,509,458	3,501,714	87,354	3,589,068	79,611
Quarter 1	11,071,390	11,287,544	259,572	11,547,116	475,726
April*	3,332,865	3,405,026	57,443	3,462,470	129,605
Total (2012)	14,404,255	14,692,570	317,016	15,009,586	605,331

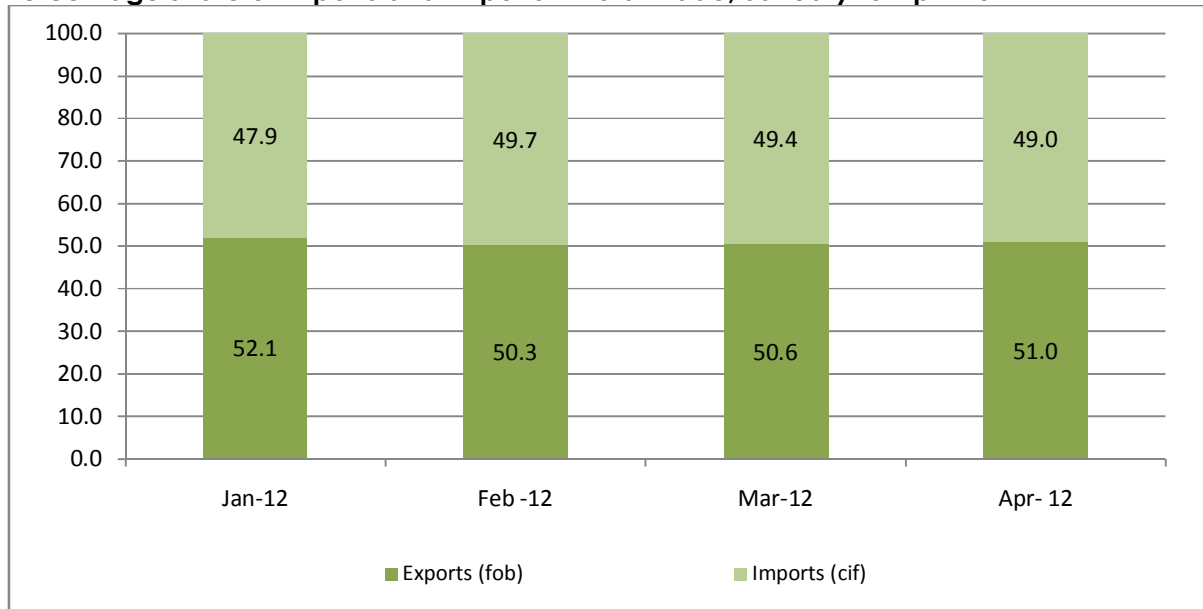
Source: CSO, International Trade Statistics, 2011 and 2012

These trade data are compiled based on the General Trade System

Note: (*) Provisional

(®) Revised

Percentage share of Exports and Imports in Total Trade, January to April 2012*



These trade data are compiled based on the General Trade System

Note: March 2012 figures have been revised, while April 2012 figures are provisional

Source: CSO, International Trade Statistics, 2012

Exports by Major Product Categories, April and March 2012

Zambia's major export products in April 2012 were from the Intermediate goods category (mainly comprising copper cathodes and sections of refined copper) accounting for about 82.3 percent. Other exports were from the Consumer goods, Raw materials and Capital goods categories; which

collectively accounted for about 17.7 percent of total exports in April 2012. This implies that between April 2012 and March 2012, the country has been a net exporter of Intermediate goods, mainly Metals and their articles, accounting for an average of 83.4 percent of the total exports.

Exports by Major Product Categories April and March 2012

Description	April 2012*		March 12®	
	Value (k'million)	% Share	Value (k'million)	% Share
Consumer Goods	290,576	8.4	308,851	8.6
Raw Materials	255,332	7.4	162,768	4.5
Intermediate Goods	2,850,308	82.3	3,033,197	84.5
Capital Goods	66,252	1.9	84,252	2.3
Total:	3,462,470	100.0	3,589,068	100.0

Source: CSO, International Trade Statistics, 2012

Note: (*) Provisional
(®) Revised

Zambia's Metal Exports and Non-Traditional Exports (NTEs) April and March 2012

There has been a 3.5 percent decrease in the total value of exports from K3, 589.1 Billion to K3, 462.5 Billion between March and April 2012. The overall contribution of Metals and their products to the total

export earnings in April and March 2012 averaged about 76.0 percent. The share of NTEs recorded an average of about 24.0 percent in revenue earnings between April and March 2012.

Zambia's Metal Exports and Non-Traditional Exports (NTEs) April and March 2012

GROUP	April 2012*		March 12®	
	Value (K'million)	% Share	Value (K'million)	% Share
Traditional Exports (mainly Metals)	2,632,980	76.0	2,725,161	75.9
Non-Traditional Exports	829,490	24.0	863,907	24.1
Total Exports	3,462,470	100.0	3,589,068	100.0

Source: CSO, International Trade Statistics, 2012

Note: (*) Provisional
(®) Revised

Zambia's Major Export Destinations by Commodity in April 2012

Zambia's major export destination in April 2012 was Switzerland, which accounted for 38.2 percent. The major export products were Cathodes & Sections of Cathodes of refined Copper accounting for about 88.9 percent.

China was the second major export destination accounting for 17.9 percent. The major export product was Copper

Blister, which contributed 86.0 percent to the country's total exports.

South Africa was the third major destination of Zambia's exports accounting for 9.9 percent. The major export product was Semi-manufactured gold (incl. gold plated with platinum), which accounted for 21.2 percent.

The fourth major export destination, was Congo DR, accounting for 8.7 percent. The major export products were Articles of cement, concrete or artificial stone (27.6 percent).

Zimbabwe was the fifth major destination of Zambia's exports accounting for 4.3 percent. The major export product was

Maize (excl. Seed), accounting for 53.1 percent.

These five countries collectively accounted for about 79.0 percent of Zambia's total export earnings in April 2012.

Zambia's Five Major Export Destinations by Product for April 2012*

Country / Hs-Code	Description	April 2012*	
		Value (K'Million)	% Share
SWITZERLAND		1,321,360	100.0
74031100	Cathodes and sections of cathodes of refined copper	1,175,081	88.9
74031910	Copper blister	81,976	6.2
74091900	Plates, sheets and strip, of refined copper, uncoiled, >0.15mm thick	60,728	4.6
74032900	Copper (excl. master) alloys, nes, unwrought	2,435	0.2
52010000	Cotton, not carded or combed	1,137	0.1
91021990	Electric. operated wrist-watches, nes (excl.those with case of precious metal - other	3	0.0
00000010	Air Time	0	0.0
01011000	Pure bred breeding animals	0	0.0
01011100	Live pure bred breeding horses	0	0.0
01011900	Live horses, other than for pure-bred breeding	0	0.0
Other Products		0	0.0
% of Total April Exports		38.2	
CHINA		619,956	100.0
74031910	Copper blister	533,246	86.0
74032900	Copper (excl. master) alloys, nes, unwrought	77,421	12.5
74031100	Cathodes and sections of cathodes of refined copper	1,919	0.3
26020000	Manganese ores/concentrates (inc.ferruginous), with manganese cont.of=>20%	1,847	0.3
44079900	Wood, nes sawn or chipped lengthwise, sliced or peeled, >6mm thick	1,828	0.3
26030000	Copper ores and concentrates	1,517	0.2
81059000	Other: Articles of cobalt, nes	1,105	0.2
44071000	Coniferous wood sawn or chipped lengthwise, sliced or peeled, >6mm thick	407	0.1
41041100	-In the wet state (including wet blue):--Full grains, unsplit, grain splits	188	0.0
44011000	Fuel wood, in logs, in billets... or in similar forms	95	0.0
Other Products		383	0.1
% of Total April Exports		17.9	
SOUTH AFRICA		341,522	100.0
71081300	Semi-manufactured gold (incl. gold plated with platinum), non-monetary	72,271	21.2
81059000	Other: Articles of cobalt, nes	71,500	20.9
74031100	Cathodes and sections of cathodes of refined copper	57,793	16.9
74081100	Wire of refined copper, maximum cross-sectional dimension >6mm	35,339	10.3
10059000	Maize (excl. seed)	27,134	7.9
85444900	Electric conductors, nes, for a voltage <=80 V, not fitted with connectors	24,021	7.0
52010000	Cotton, not carded or combed	9,348	2.7
24012000	Tobacco, partly or wholly stemmed/stripped	6,356	1.9
72142090	Iron/steel bars & rods,hotrolled,twiste/with deformtns from rolling proc. - Other	5,612	1.6
12072000	Cotton seeds	2,595	0.8
Other Products		29,554	8.7
% of Total April Exports		9.9	
CONGO DR		299,967	100.0

Country / Hs-Code	Description	April 2012*	
		Value (K'Million)	% Share
68109900	Articles of cement, concrete or artificial stone, nes	82,701	27.6
28070010	Sulphuric acid; oleum in bulk	31,792	10.6
28020010	Sulphur, sublimed or precipitated; colloidal sulphur - In bulk	29,399	9.8
25232900	Portland cement (excl. white)	25,369	8.5
28321010	Sodium sulphites in bulk	14,464	4.8
11010000	Wheat or meslin flour	12,946	4.3
36020090	Other prepared explosives, (excl. propellant powders)	6,433	2.1
15100000	Other oils and their fractions, obtained solely from olives, nes	6,383	2.1
38249000	Chemical products and residual products of chemical industries, nes	6,322	2.1
33029010	Other mixtures with basis of odoriferous subst.incl.alc. used in indst.in bulk	5,650	1.9
Other Products		78,507	26.2
% of Total April Exports		8.7	
ZIMBABWE		147,210	100.0
10059000	Maize (excl. seed)	78,187	53.1
24011000	Tobacco, not stemmed/stripped	32,808	22.3
10030090	Other barley	6,760	4.6
72142090	Iron/steel bars & rods, hotrolled, twisted/with deformtns from rolling proc. - Other	2,621	1.8
19053100	Sweet biscuits.	2,134	1.4
17011300	Raw cane sugar specified in Subheading Note 2 to this Chapter	2,122	1.4
21061010	Protein concentrates and textured protein substances - Specially prepared for infants	2,106	1.4
17049000	Sugar confectionery (incl. white chocolate), not containing cocoa, nes	1,959	1.3
23099020	Animal feed supplements being premixes	1,662	1.1
72169900	Angles, shapes and sections of iron or non-alloy steel, nes	1,631	1.1
Other Products		15,220	10.3
% of Total April Exports		4.3	
Other Destination		732,455	21.2
Total Value of April Exports		3,462,470	

Source: CSO, International Trade Statistics, 2012

Note: (*) Provisional

(R) Revised figures

Export Market Shares by Regional Groupings, April and March 2012

The Southern African Development Community (SADC) regional grouping was the largest market for Zambia's total exports, accounting for 33.5 percent in April 2012. Within SADC, South Africa was the dominant market in April 2012 with 29.5 percent. Other notable markets in SADC were Congo (DR), Zimbabwe, Malawi and Botswana.

Asia was the second largest market for Zambia's total exports accounting for 18.8 percent in April 2012. Within Asia, China was the dominant market with 95.3 percent in April 2012. Other notable markets in Asia were India, United Arab Emirates, Hong Kong and Japan.

The Common Market for Eastern and Southern Africa (COMESA) was the third

largest market for Zambia's total exports, accounting for 15.3 percent in April 2012. Within COMESA, Congo DR dominated the export market, accounting for 56.7 percent. Other notable markets in COMESA were Zimbabwe, Malawi, Kenya and Burundi.

The European Union (EU) was the fourth largest market for Zambia's total exports accounting for 8.2 percent in April 2012 and 7.8 percent in March 2012. Within the EU, the United Kingdom was the dominant market with 49.0 percent and 77.9 percent in April and March 2012 respectively. Other notable markets were Belgium, Germany, Netherlands and France.

Export Market Shares by Regional Groupings, April 2012 and March 2012 (K' Millions)

GROUPING	April 2012*		GROUPING	March 2012®	
	Value (K'Million)	% Share		Value (K'Million)	% Share
SADC	1,159,067	100.0	SADC	1,089,923	100.0
South Africa	341,522	29.5	South Africa	345,172	31.7
Congo DR	299,967	25.9	Congo DR	222,065	20.4
Zimbabwe	147,210	12.7	Zimbabwe	134,276	12.3
Malawi	30,995	2.7	Malawi	19,664	1.8
Botswana	12,100	1.0	Botswana	15,840	1.5
Other SADC	327,274	28.2	Other SADC	352,907	32.4
% of Total April Exports	33.5		% of Total March Exports	30.4	
ASIA	650,513	100.0	ASIA	856,451	100.0
China	619,956	95.3	China	649,163	75.8
India	14,959	2.3	India	73,878	8.6
United Arab Emirates	14,166	2.2	Singapore	73,021	8.5
Hong Kong	979	0.2	United Arab Emirates	58,274	6.8
Japan	295	0.0	Hong Kong	767	0.1
Other ASIA	158	0.0	Other ASIA	1,349	0.2
% of Total April Exports	18.8		% of Total March Exports	23.9	
COMESA	528,618	100.0	COMESA	414,048	100.0
Congo DR	299,967	56.7	Congo DR	222,065	53.6
Zimbabwe	147,210	27.8	Zimbabwe	134,276	32.4
Malawi	30,995	5.9	Malawi	19,664	4.7
Kenya	17,373	3.3	Kenya	13,529	3.3
Burundi	14,640	2.8	Burundi	10,475	2.5
Other COMESA	18,433	3.5	Other COMESA	14,039	3.4
% of Total April Exports	15.3		% of Total March Exports	11.5	
EUROPEAN UNION	285,059	100.0	EUROPEAN UNION	278,288	100.0
United kingdom	139,627	49.0	United kingdom	216,703	77.9
Belgium	132,585	46.5	Belgium	29,514	10.6
Germany	4,873	1.7	Luxembourg	19,110	6.9
Netherlands	4,583	1.6	Netherlands	6,636	2.4
France	1,713	0.6	Germany	5,438	2.0
Other EU	1,678	0.6	Other EU	888	0.3
% of Total April Exports	8.2		% of Total March Exports	7.8	
Total Value of April Exports	3,462,470		Total Value of March Exports	3,589,068	

Source: CSO, International Trade Statistics, 2012

Note: (*) Provisional

(R) Revised figures

Imports by Major Product Categories April and March, 2012

Zambia's major import products by category in April 2012 were Capital goods, accounting for 42.8 percent. The Intermediate goods category was second with 26.1 percent followed by Consumer goods category with 20.5

percent. Raw materials category was fourth with 10.5 percent. In April and March 2012, the major import category has been Capital goods category, contributing an average of 43.2 percent to total imports.

Imports (cif) by Major Product Categories April and March 2012, (K' Millions)

Description	April 2012*		March 2012(R)	
	Value (k'million)	% Share	Value (k'million)	% Share
Consumer Goods	683,416	20.5	495,744	14.1
Raw Materials	350,812	10.5	392,454	11.2
Intermediate Goods	871,201	26.1	1,090,965	31.1
Capital Goods	1,427,436	42.8	1,530,294	43.6
Total:	3,332,865	100.0	3,509,458	100.0

Source: CSO, International Trade Statistics, 2012

Note: (*) Provisional

(R) Revised figures

Zambia's Major Import Sources by Commodity, April 2012

The major source of Zambia's imports in April 2012 was South Africa, accounting for 37.8 percent. The major import products were Mineral or chemical fertilizers contributing 9.0 percent to total imports.

products were copper ores and concentrates, accounting for 40.9 percent.

Other sources of Zambia's imports were China, Kenya and India.

The second main source of Zambia's imports in April 2012 was Congo DR, accounting for 11.8 percent of the total value of imports. The major import

These five countries collectively accounted for 68.5 percent of Zambia's total imports in April 2012.

Zambia's Major Import Sources by Products, April 2012* (K' Millions)

Country / Hs-Code	Description	April 2012*	
		Value (K'Million)	% Share
SOUTH AFRICA		1,258,867	100.0
31052000	Mineral or chemical fertilizers with nitrogen, phosphorus and potassium	113,178	9.0
28020010	Sulphur, sublimed or precipitated; colloidal sulphur - In bulk	40,353	3.2
84314900	Parts of machinery of 84.26, 84.29 and 84.30, nes	29,858	2.4
84749000	Parts of machinery of 84.74	28,918	2.3
73089090	Structures and parts of structures, nes, of iron or steel - Other	20,892	1.7
30039000	Other medicaments with >=2 constituents, not for retail sale, nes	20,200	1.6
25030000	Sulphur of all kinds (excl. sublimed, precipitated and colloidal sulphur)	18,520	1.5
27101950	Cutting oil,grease cutting oils,cleaning oils etc.	16,120	1.3
87042110	Diesel Dual purpose vehicles for both persons & goods (twin cab, pickup) upto 5 tonnes	15,753	1.3
84378000	Machinery for milling or working cereals or dried vegetables	15,724	1.2
Other Products		939,352	74.6
% of Total April Imports		37.8	
CONGO DR		394,464	100.0
26030000	Copper ores and concentrates	161,139	40.9
74031100	Cathodes and sections of cathodes of refined copper	129,142	32.7
26050000	Cobalt ores and concentrates	60,627	15.4
28220010	Cobalt oxides and hydroxides; commercial cobalt oxides in bulk	33,591	8.5
28369910	Other carbonates; peroxocarbonates in bulk	2,689	0.7
74062000	Copper powders of lamellar structure; flakes	2,584	0.7
74031910	Copper blister	2,370	0.6
28369920	Other carbonates; peroxocarbonates - not in bulk	1,478	0.4
90148000	Instruments and apparatus for navigation, nes	298	0.1
84131990	Pumps for liquids, with or designed to be fitted with a measuring device - Other	231	0.1
Other Products		315	0.1
% of Total April Imports		11.8	
CHINA		294,603	100.0
84388000	Machinery for the preparation or manufacture of food or drink, nes	41,763	14.2
73269090	Articles of iron or steel, nes - Other	16,106	5.5

Country / Hs-Code	Description	April 2012*	
		Value (K'Million)	% Share
85352900	Automatic circuit breakers for a voltage >72.5 kV	12,012	4.1
84314900	Parts of machinery of 84.26, 84.29 and 84.30, nes	10,844	3.7
85353000	Isolating switches and make-and-break switches, >1000 V	9,893	3.4
87012000	Road tractors for semi-trailers	9,199	3.1
85176900	Other	7,749	2.6
85043100	Transformers, nes, power handling capacity =<1kva	7,482	2.5
85442000	Co-axial cable and other co-axial electric conductors	6,520	2.2
44109000	Other boards of wood, nes	5,803	2.0
Other Products		167,233	56.8
% of Total April Imports		8.8	
KENYA		203,008	100.0
27101910	Gas oils.	109,626	54.0
27101110	Motor Spirit	64,703	31.9
24022000	Cigarettes containing tobacco	4,299	2.1
73089090	Structures and parts of structures, nes, of iron or steel - Other	2,137	1.1
15171000	Margarine (excl. liquid)	1,892	0.9
34012090	Soap in other forms, nes - Other	1,728	0.9
15162000	Vegetable fats and oils and their fractions, hydrogenated, etc	1,725	0.8
34051000	Polishes, creams and similar preparations for footwear or leather	1,345	0.7
21023000	Prepared baking powders	1,081	0.5
34011190	Other soap and organic surface-active products in bars, etc, for toilet use	892	0.4
Other Products		13,580	6.7
% of Total April Imports		6.1	
INDIA		133,455	100.0
30049000	Other medicaments of mixed or unmixed products, for retail sale, nes	46,703	35.0
31052000	Mineral or chemical fertilizers with nitrogen, phosphorus and potassium	8,457	6.3
39206310	Plates..., of unsaturated polyesters, not reinforced, etc	5,936	4.4
23040000	Oil-cake and other solid residues, of soya-bean	5,384	4.0
30042000	Medicaments of other antibiotics, for retail sale	4,567	3.4
85142000	Induction or dielectric furnaces and ovens	4,441	3.3
87019010	Tractors (excl. tractors of 87.09), nes - For use in agriculture or horticulture	2,901	2.2
15111000	Crude palm oil	2,791	2.1
84798900	Machines, having individual functions, nes	2,115	1.6
72107000	Rolled iron/steel, width >=600mm,painted,varnished,or coated with plastics	1,850	1.4
Other Products		48,310	36.2
% of Total April Imports		4.0	
Other Destination		1,048,468	31.5
Total Value of April Imports		3,332,865	

Source: CSO, International Trade Statistics, 2012

Note: (*) Provisional

(R) Revised figures

Import Market Shares by Regional Groupings, April and March 2012

The SADC regional grouping was the largest source of Zambia's imports accounting for 53.9 percent in April 2012. Within SADC, South Africa was the major source of Zambia's imports with 70.1 percent in April 2012 and 65.9 percent in March 2012. Congo (DR) was the second major source of Zambia's imports with 22.0 and 26.5 percent in April and March 2012, respectively. Other notable markets were Mauritius, Zimbabwe and Tanzania.

COMESA grouping of countries was the second largest source of Zambia's imports accounting for 23.0 percent in April 2012. Within COMESA, Congo (DR) was the main source of Zambia's imports, accounting for 51.6 percent, followed by Kenya with 26.5 percent. Other notable sources were Egypt, Mauritius and Zimbabwe.

Asia was the third largest source of Zambia's imports accounting for 21.8 percent in April 2012. Within Asia, China was the dominant source of Zambia's imports with 40.6 percent in April 2012. India was the second dominant market in April 2012 with 18.4 percent. Other important markets were Japan, United Arab Emirates and Hong Kong.

The EU was the fourth largest source of Zambia's imports accounting for 10.6 percent in April 2012. Within the EU, the United Kingdom was the major source of Zambia's imports accounting for 28.6 percent in April 2012. Sweden was the second major source of Zambia's imports with 14.7 percent. Other notable markets were Ireland, France and Finland.

Import Market shares by Major Regional Groupings, April and March 2012 (K' Millions)

Grouping	April 2012*		Grouping	March 2012®	
	Value (K'million)	% share		Value (K'million)	% share
SADC	1,796,652	100.0	SADC	2,049,436	100.0
South Africa	1,258,867	70.1	South Africa	1,350,325	65.9
Congo DR	394,464	22.0	Congo DR	543,682	26.5
Mauritius	46,017	2.6	Zimbabwe	43,444	2.1
Zimbabwe	36,910	2.1	Tanzania	38,645	1.9
Tanzania	30,254	1.7	Mauritius	30,928	1.5
Other SADC	30,140	1.7	Other SADC	42,412	2.1
% of total April imports	53.9		% of total March imports	58.4	
COMESA	764,935	100.0	ASIA	782,486	100.0
Congo DR	394,464	51.6	China	319,998	40.9
Kenya	203,008	26.5	Japan	130,004	16.6
Egypt	69,826	9.1	India	118,026	15.1
Mauritius	46,017	6.0	United Arab Emirates	107,561	13.7
Zimbabwe	36,910	4.8	Singapore	31,702	4.1
Other COMESA	14,710	1.9	Other ASIA	75,194	9.6
% of total April imports	23.0		% of total March imports	22.3	
ASIA	725,818	100.0	COMESA	768,049	100.0
China	294,603	40.6	Congo DR	543,682	70.8
India	133,455	18.4	Egypt	86,153	11.2
Japan	94,848	13.1	Zimbabwe	43,444	5.7
United Arab Emirates	86,630	11.9	Kenya	39,592	5.2
Hong Kong	35,293	4.9	Mauritius	30,928	4.0
Other ASIA	80,989	11.2	Other COMESA	24,249	0.8
% of total April imports	21.8		% of total March imports	21.9	
EUROPEAN UNION	351,715	100.0	EUROPEAN UNION	360,274	100.0
United kingdom	100,485	28.6	United kingdom	89,362	24.8
Sweden	51,842	14.7	Denmark	43,679	12.1
Ireland	36,527	10.4	Sweden	42,253	11.7
France	29,027	8.3	Belgium	38,432	10.7
Finland	27,828	7.9	Ireland	32,360	9.0
Other EU	106,005	30.1	Other EU	114,189	31.7
% of total April imports	10.6		% of total March imports	10.3	
Total value of April imports	3,332,865		Total value of March imports	3,509,458	

Source: CSO, International Trade Statistics, 2011 and 2012

Note: (*) Provisional
(R) Revised figures

2011 QUARTERLY INDEX OF INDUSTRIAL PRODUCTION

INDUSTRIAL OUTPUT PERFORMANCE IN 2011

According to the 2011 Index of Industrial Production (IIP) which covers the mining and quarrying, manufacturing and electricity industries, Zambia's industrial output increased by 5.6 percent in 2011 compared to the output produced during the year 2010.

The 5.6 percent growth in the production index is attributed to the growth in the indices of manufacturing and electricity. Output for manufacturing and electricity grew by 10.7 percent and 10.1 percent, respectively.

Index Numbers and year-on-year percentage changes of the Quarterly IIP, 2009-2011

Year	Average Index			Growth 2010/2009	Growth 2011/2010
	2009	2010	2011		
TOTAL INDEX	171.0	187.5	198.0	9.7	5.6
MINING INDEX	243.5	273.3	275.7	12.3	0.9
MANUFACTURING INDEX	131.8	140.6	155.6	6.7	10.7
ELECTRICITY INDEX	132.4	144.1	158.6	8.8	10.1

Source: Index of Industrial Production, CSO

The 5.6 percent growth in the Index of Industrial Production in 2011 is however 4.1 percentage points lower than that recorded in 2010. The low growth is as a

result of a reduction in production in the mining sector. The mining index grew by 0.9 percent in 2011 compared to a growth of 12.3 percent in 2010.

Index Numbers for the Quarterly IIP, 2009-2011,

YEAR		Average Index			Growth 2010/2009	Growth 2011/2010
		2009	2010	2011		
TOTAL INDEX		171.0	187.5	198.0	9.7	5.6
MINING	TOTAL MINING	243.5	273.3	275.7	12.3	0.9
	Coal	32.9	0.0	0.0	(100.0)	-
	Non-ferrous Ore	224.2	261.1	253.7	16.5	(2.8)
	Stone Quarrying	298.1	314.1	339.5	5.3	8.1
MANUFACTURING	TOTAL MANUFACTURING	131.8	140.6	155.6	6.7	10.7
	Food, Beverages & Tobacco	180.3	193.6	211.5	7.4	9.3
	Textile, Clothing & Leather	32.5	14.0	6.4	(56.8)	(54.7)
	Wood & Wood Products	192.1	217.7	231.0	13.4	6.1
	Paper & Paper Products	119.8	147.0	174.1	22.7	18.4
	Chemicals, Rubbers & Plastics	100.7	103.5	110.9	2.8	7.2
	Non-metallic Mineral Products	166.2	187.8	234.7	13.0	25.0
	Basic Metal Industries	76.2	74.7	74.0	(2.0)	(0.9)
	Fabricated Metal Products	90.5	102.1	119.1	12.8	16.6
TOTAL ELECTRICITY		132.4	144.1	158.6	8.9	10.1

Source: Index of Industrial Production, CSO

Performance of the Mining and Quarrying Industry in 2011

Production in the Mining and Quarrying industry grew by 0.9 percent in the year 2011. The lower growth in the mining and quarrying index is as a result of a decline

in Non-ferrous ore sub-industry, which declined by 2.8 percent in 2011. This was further due to a decline in the production of copper.

Performance of the Mining and Quarrying Industry for 2009-2011

		Average Index			Growth 2010/2009	Growth 2011/2010
PERIOD		2009	2010	2010		
MINING	TOTAL MINING	243.5	273.3	275.7	12.3	0.9
	Coal	32.9	0.0	0.0	(100.0)	-
	Non-ferrous Ore	224.2	261.1	253.7	16.5	(2.8)
	Stone Quarrying	298.1	314.1	339.5	5.3	8.1

Source: Index of Industrial Production, CSO

Copper, Cobalt and Coal Production by the core mines

Copper production declined to 739,759 metric tonnes in the year 2011 from 767,008 metric tonnes in the year 2010, representing a decline of 3.6 percent. Production of cobalt, on the other hand increased to 2,137 metric tonnes in the year 2011 from 2,128 metric tonnes in the

year 2010, representing an increase of 0.4 percent.

The other mining sub-industry comprises coal mining. No production of coal was recorded during the review period. However, production at the only coal mine in Zambia has since resumed.

Copper and Cobalt production by core mines, 2009-2011, in metric tonnes

	Product Weight	2009	2010	% Change 2010	2011	% Change 2011
Copper	0.85	689,646	767,008	11.2	739,759	(3.6)
Cobalt	0.15	3,660	2,128	(41.9)	2,137	0.4

Source: Index of Industrial Production, CSO

Performance of the Manufacturing Industry

Production in the manufacturing industry grew by 10.7 percent in the year 2011 compared to 2010 which recorded a growth of 6.7 percent. The high growth is mainly attributed to the increase in the

Food, Beverages & Tobacco; Non-metallic mineral products; Paper & Paper Products; and the fabricated metal products sub-industries.

Performance of manufacturing industry for 2009-2011

		Average Index			Growth 2010/2009	Growth 2011/2010
YEAR		2009	2010	2011		
MANUFACTURING	TOTAL MANUFACTURING	131.8	140.6	155.6	6.7	10.7
	Food, Beverages & Tobacco	180.3	193.6	211.5	7.4	9.3
	Textile, Clothing & Leather	32.5	14.0	6.4	(56.8)	(54.7)
	Wood & Wood Products	192.1	217.7	231.0	13.4	6.1
	Paper & Paper Products	119.8	147.0	174.1	22.7	18.4
	Chemicals, Rubbers & Plastics	100.7	103.5	110.9	2.8	7.2
	Non-metallic Mineral Products	166.2	187.8	234.7	13.0	25.0
	Basic Metal Industries	76.2	74.7	74.0	(2.0)	(0.9)
	Fabricated Metal Products	90.5	102.1	119.1	12.8	16.6

Source: Index of Industrial Production, CSO

The Food, beverage and tobacco sub-industry grew from 7.4 percent in 2010 to 9.3 percent in 2011. The fabricated metal products sub-industry grew by 16.6 percent compared to a growth of 12.8

recorded in the year 2010. In this sub-industry, output grew on account of increased production of door and window frames, bolts and nuts. The non-metallic mineral products sub-industry

grew by 25.0 percent in 2011 compared to a growth of 13.0 percent recorded in 2010, an increase of 12 percentage points, mainly on account of increased production of cement and lime.

Basic Metal Products, also recorded positive growth rates. The Textile, Clothing and Leather industry continued to record declines due to reductions in the production of textiles and clothing.

Other sub-industries, except Textiles, Clothing and Leather industries and the

Performance of the Electricity Industry

In 2011, a total of 12,359,000 KWh of electricity was generated compared to 11,235,226 KWh generated in 2010.

Production of electricity in KWh, 2010 – 2011

	2010					2011					% Change
	Q1	Q2	Q3	Q4	Total 2010	Q1	Q2	Q3	Q4	Total Q1, Q2 2011	2011 /2010
Generation	2,570,823	2,817,300	2,980,736	2,866,367	11,235,226	2,931,000	3,062,000	3,326,000	3,040,000	12,359,000	10.0

Source: Index of Industrial Production, CSO

2010 Census Final Results Out!

Zambia's Final Population figure stands at 13,092,666!

Zambia's final population captured by the 2010 Census of Population and Housing stood at 13,092,666. This is an increase from the population of 9,885,591 captured during the 2000 Census of Population and Housing conducted exactly ten years earlier.

Out of the 13,092,666 population figure, 49.3 percent or 6,454,647 are males, and 50.7 percent or 6,638,019 are females.

Of the 13,092,666 population enumerated in the 2010 Census, 7,923,289 or 60.5 percent reside in rural areas, while 5,169,377 or 39.5 percent reside in urban areas.

Population grew at 2.8 percent per annum between 2000 and 2010!

Zambia is among countries with a high rate of population growth. The Zambian population grew at an average annual rate of 2.8 percent per annum during the inter-censal period, 2000-2010.

Lusaka Province had the highest average annual rate of population growth during the period 2000-2010, growing at 4.6 percent per annum, followed by Northern Province at 3.2 percent per annum. Western Province had the least average annual rate of population growth at 1.7 percent per annum during the same period.

Average Annual Rate of Population Growth by Province, 2000-2010			
Province	2000 Census	2010 Census	Growth Rate 2000-2010 (Percent)
Zambia	9,885,591	13,092,666	2.8
Central	1,012,257	1,307,111	2.6
Copperbelt	1,581,221	1,972,317	2.2
Eastern**	1,231,283	1,592,661	2.6
Luapula	775,353	991,927	2.5
Lusaka	1,391,329	2,191,225	4.6
Muchinga*	524,186	711,657	3.1
Northern**	809,400	1,105,824	3.2
North Western	583,350	727,044	2.2
Southern	1,212,124	1,589,926	2.8
Western	765,088	902,974	1.7
Source: 2000 and 2010 Censuses of Population and Housing			
Note: *Muchinga was created in 2011			
** Figures adjusted following the new Provincial Demarcations			

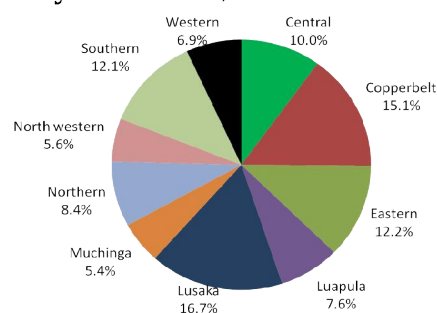
Lusaka Province has the largest population at 2,191,225!

Lusaka Province had the largest population at 2,191,225, representing 17 percent of the total population of the country.

Copperbelt Province was second with a population of 1,972,317, representing 15 percent of the total population, while Eastern Province was third with a population of 1,592,661, representing 12 percent of the total population.

Muchinga Province had the least population at 711,657, representing, 5 percent of the total population.

Percentage Share of Population by Province, Zambia 2010



Zambia's Population continues to be young

Zambia continues to have a very young population with 45.4 percent of the population below the age of 15 years.

In rural areas 48.6 percent of the population is below the age of 15 years compared to 40.5 percent of those in urban areas.

The population aged 15-24 make up 20.8 percent of the total population, of which 19.3 percent are in rural areas and 23.2 percent are in urban areas.

Age	Total	Rural	Urban	Total Percent	Rural Percent	Urban Percent
Below 15	5,943,169	3,852,021	2,091,148	45.4	48.6	40.5
15-24	2,725,757	1,525,983	1,199,774	20.8	19.3	23.2
15-64	6,803,054	3,816,400	2,986,654	52	48.2	57.8
65+	346,443	254,868	91,575	2.6	3.2	1.8

Source: 2010 Census of Population and Housing

Zambia has 2,513,768 Households with an average household size of 5.2 persons!

Zambia has a total of **2,513,768** households as captured during the 2010 Census of Population and Housing. Of the total number of households, 1,947,501 were Male headed representing 77.5 percent of the total number of households, while 566,267 were female headed households representing 22.5 percent.

Overall, the average household size is 5.2 persons. The average household size for Male headed households is 5.4 persons while that for female headed households is 4.4 persons. The average household size is higher in rural areas at 5.3 persons per household compared to 5.1 persons per household in urban areas.

Lusaka most densely populated!

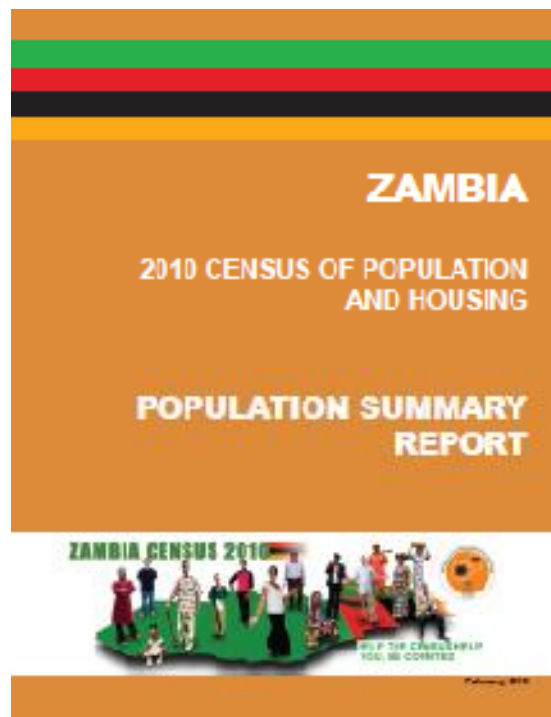
Zambia's population density has increased from 13.1 persons per square kilometre in 2000 to 17.4 persons per square kilometre in 2010.

Lusaka Province with a population density of 100.1 persons per square kilometre is the most densely populated province, while North Western Province with a population density of 5.8 persons per square kilometre is the least densely populated province.

At district level, Lusaka District with a population density of 4,853.2 persons per square kilometre is most densely

populated district, while Mufumbwe District with a population density of 2.8 persons per square kilometre is the least densely populated district.

2010 Census Population Summary Report out soon!



A detailed **Population Summary Report** has been prepared by the Central Statistical Office (CSO) and will be disseminated to all stakeholders and the general public soon. The report includes population figures down to ward level and information on Sex and Geographical distribution of the population.

Other reports to be released later this year include National and Provincial Analytical Reports, A Thematic Report on Household and Housing Characteristics, A Special Report on Orphanhood and Fosterhood, A Thematic Report on Urbanisation and Migration as well as Detailed Descriptive Tabulations Reports.

CROP FORECASTING SURVEY (CFS)

THE NATIONAL FOOD BALANCE SHEET FOR THE 2011-2012 AGRICULTURE MARKETING SEASON

Crop Forecasting Survey results for the 2011/2012 Agriculture Season show that total national Maize availability for Zambia during the 2012/2013 agricultural marketing season is 3,623,619 metric tonnes. Of this availability, 2,852,687 metric tonnes is fresh production expected this agriculture season, while 770,931 metric tonnes is carry-over stocks from last season available as at 1st May, 2012. Compared to last season's maize production forecast of 3,020,380 metric tonnes, the 2011/2012 forecast production represents a 5.6 percent drop. It is also estimated that the total maize requirements during the 2012/2013 agriculture marketing season will be 2,588,286 metric tonnes. This means that Zambia will have a maize surplus of 1,035,333 metric tonnes.

The country is also expected to have a surplus of 96,371 metric tonnes of wheat, a slight improvement over last year's surplus of 88,167 metric tonnes. There is also expected to be a cassava flour surplus of 353,741 metric tonnes, 123, 101 metric tonnes lower than what was recorded last marketing season. All the expected production of sorghum, millet, sweet potatoes and irish potatoes are just enough to meet local demand. With regards to paddy rice, however, there is expected to be a deficit of 12, 583 metric tonnes. The total food surpluses (all cereals plus cassava and potatoes) when converted to maize-meal equivalent is expected to be 1,446,097 metric tonnes. This represents a reduction of 732,488 metric tonnes in comparison to the staple food surplus of 2,178,585 metric tonnes recorded last marketing season.

National Food Balance for Zambia for the 2012/2013 Agricultural Marketing Season Based on the 2011/2012 MAL/CSO Crop Forecasting Survey and MACO/Private Sector Utilization Estimates (Metric Tonnes)									
			Maize	Paddy rice	Wheat	Sorghum & Millet	Sweet and Irish potatoes	Cassava flour	Total (maize equivalent)
A.	Availability:								
	(i) Opening stocks (1st May 2012)	1/	770,931	7,058	78,769	6,325	0	0	861,553
	(ii) Total production (2011/12)	2/	2,852,687	45,321	253,522	45,009	195,551	1,106,292	4,278,722
	Total availability		3,623,619	52,378	332,291	51,334	195,551	1,106,292	5,140,275
B.	Requirements:								
	(i) Staple food requirements:								
	Human consumption	3/	1,501,504	58,473	223,344	47,106	185,773	697,237	2,530,074
	Food Reserve Stocks (net)	4/	500,000	0	0	0	0	0	500,000
	(ii) Industrial requirements:								
	Stockfeed	5/	203,000	0	0	0	0	0	203,000
	Breweries	6/	97,000	0	0	0	0	0	97,000
	Grain retained for other uses	7/	44,147	4,223	0	1,977	0	0	50,168
	(iii) Losses	8/	142,634	2,266	12,676	2,250	9,778	55,315	213,936
	(iv) Structural cross-border trade	9/	100,000						100,000
	Total requirements		2,588,286	64,962	236,020	51,334	195,551	752,551	3,694,178
C.	Surplus/deficit (A-B)	10/	1,035,333	-12,583	96,271	0	0	353,741	1,446,097
D.	Commercial imports/exports	11/	-1,035,333	12,583	-96,271	0	0	0	0
E.	Food aid import requirements	12/	0	0	0	0	0	0	0

Notes:	
1/	Stocks expected to be held by commodity traders, millers, brewers, FRA, DMMU and commercial and small scale farmers as at 1st May 2012
2/	Production estimates by MAL/CSO. Cassava production is based on the total area under cassava, using an annual yield figure of 11.7 tonnes per hectare (MAFF Root and Tuber Improvement Programme, 1996). A flour extraction rate of 25% is used. Other tubers are sweet potatoes and Irish potatoes.
3/	Human staple food consumption represents 70% (1,470 kCal/person/day) of total diet (2,100 kCal/person/day, National Food and Nutrition Commission), for the national population of 14.59 million people (based on CSO Census projections with 2.8% growth rate projected to October 2012, mid marketing year). The food balance shows an overall surplus of staple foods. Food prices may affect the level of food consumption.
4/	National strategic requirements expected to be carried over into the next season by FRA. (this amount of 500,000 Mt includes equivalent quantity that is already budgeted for)
5/	Estimated requirements by major stockfeed producers.
6/	Estimated requirements by industrial breweries.
7/	Estimated retention of grain for other uses by smallholders.
8/	Post harvest losses are estimated at 5% for grains, sweet potatoes and cassava, in line with estimates from other SADC countries.
9/	Structural exports represents cross-border trade, mostly to the DRC, that occurs on a continuing basis and that is likely to occur during the 2011/12 marketing season. It does not include large-scale formal trade.
10/	Expected surpluses or deficits that arise after meeting minimum overall staple human consumption requirements as well as industrial requirements. The total surplus/deficit is expressed as maize equivalent using energy values. The rice deficit is based on a 3 year rolling average of what is known to be imported each year, as indicated under D.
11/	Commercial imports/exports represent expected regional and international trade by the private sector. For cassava, the surplus represents cassava that is still in the ground and may not necessarily be harvested

SELECTED SOCIO-ECONOMIC INDICATORS

PROJECTED MID-YEAR POPULATION 2000-2010

	2000	2001	2002	2003	2004	2005	2006	2007	2008	2009	2010*
Total Population	9,885,591	10,089,492	10,409,441	10,744,380	11,089,691	11,441,461	11,798,678	12,160,516	12,525,791	12,896,830	13,092,666
Population Growth Rate	2.5	3.1	3.1	3.1	3.1	3.1	3	3	2.9	2.9	2.8
Life Expectancy at Birth	50	51.8	51.9	52.4	52.4	52.6	51.9	51.4	51.3	51.2	-
POPULATION BY PROVINCE											
Central	1,012,257	1,032,574	1,066,992	1,103,387	1,141,256	1,180,124	1,219,980	1,260,491	1,301,776	1,343,835	1,307,111
Copperbelt	1,581,221	1,611,569	1,662,155	1,714,225	1,767,165	1,820,443	1,874,081	1,927,576	1,980,824	2,034,012	1,972,317
Eastern	1,306,173	1,348,070	1,391,690	1,436,120	1,482,290	1,530,118	1,579,960	1,631,890	1,684,910	1,740,180	1,592,661
Luapula	775,353	791,067	817,326	845,076	873,969	903,746	934,317	965,605	997,579	1,030,572	991,927
Lusaka	1,391,329	1,413,010	1,453,690	1,495,730	1,538,000	1,579,769	1,620,730	1,660,070	1,697,730	1,733,830	2,191,225
Muchinga	-	-	-	-	-	-	-	-	-	-	711,657
Northern	1,258,696	1,277,250	1,315,650	1,357,540	1,401,340	1,445,730	1,490,330	1,534,170	1,577,310	1,619,980	1,105,824
North-western	583,350	596,010	616,496	638,004	660,322	683,367	707,074	731,351	756,261	781,800	727,044
Southern	1,212,124	1,235,134	1,275,470	1,318,161	1,362,382	1,407,433	1,453,324	1,499,462	1,545,880	1,592,864	1,589,926
Western	765,088	774,929	795,247	816,983	839,757	863,294	887,540	912,226	937,419	963,107	902,974

Source: CSO, Population Projections Report, Census of Population and Housing, 2000 and 2010

Note: The 2000 and 2010 Population figures are from the Census of Population and Housing while the 2001 to 2009 figures are Population Projections from the Projections Report.

PERCENTAGE CHANGES IN G.D.P. BY KIND OF ECONOMIC ACTIVITY - CONSTANT 1994 PRICES

KIND OF ECONOMIC ACTIVITY	2000	2001	2002	2003	2004	2005	2006	2007	2008	2009	2010	2011*
Agriculture, Forestry and Fishing	1.6	(2.6)	(1.7)	5.0	4.3	(0.6)	2.2	0.4	2.6	7.2	6.6	7.7
Agriculture	1.0	(6.0)	(6.3)	8.0	6.1	(4.0)	3.0	(2.7)	1.9	12.4	13.6	13.3
Forestry	4.0	4.3	4.3	4.3	4.3	3.6	1.4	3.7	3.7	3.7	3.7	3.7
Fishing	(1.0)	(5.0)	(0.7)	(0.7)	(0.7)	0.5	1.8	1.8	1.8	1.8	(7.0)	(2.0)
Mining and Quarrying	0.1	14.0	16.4	3.4	13.9	7.9	7.3	3.6	2.5	20.3	15.2	(5.2)
Metal Mining	(0.3)	15.0	17.1	3.3	13.5	7.1	9.0	4.4	2.5	19.7	16.0	(5.3)
Other mining and quarrying	13.3	(15.0)	(13.0)	10.7	35.8	42.9	(45.8)	(45.5)	(3.5)	99.6	(48.8)	7.4
PRIMARY SECTOR	1.1	1.9	3.8	4.5	7.5	2.5	4.1	1.7	2.5	12.4	10.2	2.0
Manufacturing	3.6	4.2	5.7	7.6	4.7	2.9	5.7	3.0	1.8	2.2	4.2	7.7
Food, Beverages and Tobacco	0.6	5.3	5.4	8.6	5.8	3.6	8.9	7.6	3.0	4.9	7.4	9.0
Textile, and leather industries	2.2	2.3	6.2	3.2	(1.9)	(2.9)	(1.3)	(19.5)	(23.6)	(20.0)	(56.8)	(58.1)
Wood and wood products	(0.3)	5.7	7.5	11.4	4.2	3.6	0.7	3.7	12.1	2.6	13.4	6.5
Paper and Paper products	(1.3)	3.8	2.2	8.2	2.5	10.6	0.3	0.7	29.3	6.2	22.7	17.5
Chemicals, rubber and plastic products	41.2	4.3	10.0	4.9	8.5	3.2	4.6	4.2	5.2	(0.3)	2.7	6.8
Non-metallic mineral products	4.5	3.5	1.7	14.9	14.4	7.4	(5.2)	2.3	5.0	11.7	13.0	23.1
Basic metal products	4.3	(18.0)	4.3	15.1	3.1	(2.0)	1.9	(4.8)	23.0	(4.8)	(2.0)	(1.4)
Fabricated metal products	11.3	(8.0)	(4.0)	5.3	4.8	7.4	5.0	7.8	(2.5)	(3.4)	12.8	18.9
Electricity, Gas and Water	1.2	12.6	(5.2)	0.4	(1.7)	5.4	10.5	1.0	(1.2)	6.8	7.4	8.2
Construction	6.5	11.5	17.4	21.6	20.5	21.2	14.4	20.0	8.7	9.5	8.1	8.5
SECONDARY SECTOR	4.0	7.5	7.2	10.8	9.1	10.0	9.8	10.0	4.7	6.2	6.5	8.2
Wholesale and Retail Trade	2.3	5.4	5.0	6.1	5.0	2.4	2.0	2.4	2.7	2.3	4.2	7.2
Restaurants, Bars and Hotels	12.3	24.4	4.9	6.9	6.4	11.7	16.1	9.6	5.0	(13.4)	10.2	7.8
Transport, Storage and Communications	2.4	2.8	1.8	4.8	6.4	11.0	22.1	19.2	15.8	7.6	14.9	12.9
Rail Transport	3.6	7.6	6.0	(8.1)	(1.8)	(11.6)	(2.6)	(18.7)	(20.2)	(23.8)	13.1	(17.8)
Road Transport	1.9	0.5	1.9	3.9	4.2	6.3	6.4	6.4	13.2	13.3	6.3	9.3
Air Transport	6.3	10.6	(8.4)	3.9	18.1	10.8	33.5	24.1	13.7	(23.4)	19.1	12.8
Communications	0.6	0.6	7.9	10.0	5.0	23.2	40.5	33.6	21.1	19.4	20.0	16.0
Financial Institutions and Insurance	(0.6)	0.1	3.5	3.5	3.5	3.3	4.0	4.1	8.7	5.2	6.0	4.9
Real Estate and Business services	17.0	3.5	4.4	4.0	4.0	3.2	3.2	3.1	3.0	2.8	3.0	2.9
Community, Social and Personal Services	(0.5)	5.8	1.6	1.6	0.6	11.4	9.0	12.5	11.7	8.6	5.3	8.4
Public Administration & Defence/Public sanitary services	(0.7)	1.0	(1.0)	0.2	0.2	6.2	(8.7)	14.8	2.2	0.4	(3.1)	10.6
Education	(0.7)	13.5	7.0	3.0	0.3	22.2	35.3	13.6	19.6	15.2	11.8	7.5
Health	(0.7)	16.5	1.0	2.5	(0.8)	(2.2)	5.2	1.0	18.3	7.7	7.2	13.3
Recreation, Religious, Culture	(0.7)	10.0	(2.0)	4.5	4.3	34.1	22.8	9.3	26.7	17.7	5.0	2.8
Personal Services	3.5	3.5	3.5	3.5	3.5	3.5	3.5	3.5	3.5	3.5	3.5	3.5
TERTIARY SECTOR	4.1	4.7	3.8	4.5	4.2	5.4	6.7	7.1	7.2	3.9	6.6	7.6
Less: FISIM	2.5	2.5	2.5	2.5	2.5	2.5	2.5	2.5	2.5	3.3	2.3	2.3
TOTAL GROSS VALUE ADDED	3.4	4.6	4.6	6.0	6.2	5.8	7.0	6.7	5.7	6.4	7.6	6.6
Taxes less subsidies on Products	4.6	7.0	(6.7)	(2.7)	(2.7)	(0.1)	(3.1)	(0.3)	5.7	6.4	7.6	6.6
TOTAL G.D.P. AT MARKET PRICES	3.5	4.9	3.3	5.1	5.4	5.3	6.2	6.2	5.7	6.4	7.6	6.6

Source: CSO; National Accounts

*Revised Estimates

The Monthly

GDP BY KIND OF ECONOMIC ACTIVITY AT CURRENT PRICES (K' BILLION)

KIND OF ECONOMIC ACTIVITY	2000	2001	2002	2003	2004	2005	2006	2007	2008	2009	2010	2011
Agriculture, Forestry and Fishing	2,002.2	2,582.0	3,247.4	4,244.6	5,568.2	6,723.6	7,800.2	9,139.5	10,863.8	13,461.4	15,642.3	18,072.4
Agriculture	561.1	627.3	749.8	1,008.2	1,249.5	1,421.7	1,537.0	1,575.1	1,826.4	2,344.3	2,801.4	3,329.4
Forestry	1,285.0	1,778.5	2,274.3	2,960.3	3,998.5	4,920.3	5,855.7	7,127.7	8,531.6	10,528.8	12,265.5	14,151.6
Fishing	156.1	176.3	223.3	276.1	320.2	381.6	407.5	436.7	505.8	588.2	575.3	591.5
Mining and Quarrying	416.1	518.9	575.1	564.8	809.6	1,030.9	1,612.5	2,037.2	1,998.9	1,682.1	2,837.8	3,346.3
Metal Mining	407.9	511.3	568.8	558.2	798.3	1,011.7	1,597.5	2,027.2	1,989.8	1,669.3	2,828.1	3,333.4
Other Mining and Quarrying	8.2	7.6	6.3	6.6	11.3	19.1	15.0	9.9	9.2	12.9	9.6	12.8
PRIMARY SECTOR	2,418.4	3,101.0	3,822.5	4,809.4	6,377.7	7,754.5	9,412.8	11,176.7	12,862.7	15,143.5	18,480.0	21,418.7
Manufacturing	1,024.6	1,293.1	1,693.6	2,241.0	2,827.7	3,430.2	4,015.7	4,487.4	5,149.6	6,016.9	6,770.8	7,769.1
Food, Beverages and Tobacco	613.9	768.4	1,033.4	1,397.2	1,726.6	2,121.0	2,423.5	2,745.1	3,218.4	3,859.0	4,358.0	4,982.6
Textile, and Leather Industries	180.4	224.2	284.5	352.9	450.7	500.4	630.8	611.4	506.7	445.2	214.5	98.7
Wood and Wood Products	64.1	89.9	118.4	164.7	222.2	273.4	323.2	393.5	509.2	621.6	791.9	937.7
Paper and Paper products	40.0	55.1	69.0	93.1	123.6	162.4	191.3	226.1	337.3	426.4	587.7	768.2
Chemicals, rubber and plastic products	85.8	111.3	142.6	178.9	231.7	281.2	331.2	372.4	432.6	519.1	613.2	700.5
Non-metallic mineral products	14.3	18.5	21.9	30.0	41.0	51.8	55.3	61.1	70.8	95.1	123.7	162.8
Basic metal products	3.2	2.9	2.8	3.1	4.0	4.7	6.9	8.0	9.4	6.2	8.9	11.0
Fabricated metal products	22.9	23.0	21.0	21.0	27.7	35.2	53.6	69.9	65.2	44.2	72.8	107.7
Electricity, Gas and Water	328.0	445.3	488.3	595.1	694.7	922.7	1,165.9	1,345.0	1,512.4	1,779.8	2,201.8	2,910.4
Construction	500.5	728.6	1,067.7	1,590.0	2,321.5	3,216.4	4,703.7	6,692.7	8,811.4	11,819.5	15,703.6	20,737.3
SECONDARY SECTOR	1,853.1	2,466.9	3,249.6	4,426.1	5,843.9	7,569.2	9,885.3	12,525.1	15,473.4	19,616.2	24,676.1	31,416.8
Wholesale and Retail trade	1,879.8	2,340.5	3,004.1	3,873.8	4,843.7	5,868.9	6,524.7	7,395.5	8,539.1	9,908.2	11,204.2	13,056.3
Restaurants, Bars and Hotels	207.0	315.9	406.8	527.7	670.9	894.0	1,120.1	1,354.2	1,610.8	1,545.2	1,838.6	2,141.2
Transport, Storage and Communications	635.7	852.6	1,055.9	1,058.2	1,252.3	1,395.6	1,629.2	1,984.4	2,248.9	2,355.2	3,076.5	3,553.0
Rail Transport	54.9	72.7	82.7	89.5	100.8	93.8	94.7	91.9	79.0	66.2	105.9	96.6
Road Transport	255.2	311.3	334.3	393.9	464.0	543.0	640.4	755.7	891.8	1,052.6	1,242.6	1,467.9
Air Transport	99.0	133.7	129.7	152.7	203.0	243.8	356.0	488.6	573.4	453.6	611.0	737.8
Communications	226.6	334.9	509.1	422.1	484.6	515.0	538.2	648.3	704.8	782.7	1,117.0	1,250.6
Financial Intermediaries and Insurance	982.2	1,238.8	1,493.1	1,847.7	2,282.7	2,771.5	3,246.9	3,647.2	4,373.6	5,534.6	6,745.1	7,568.8
Real Estate and Business services	660.6	832.8	1,041.2	1,341.2	1,691.8	1,979.4	2,296.4	2,678.2	3,138.4	3,671.6	4,306.1	5,326.3
Community, Social and Personal Services	951.3	1,297.1	1,478.4	1,828.9	2,122.8	2,806.9	3,462.2	4,324.1	5,465.5	6,649.0	8,148.6	9,695.3
Public Administration and Defence/Public Sanitary Services	500.1	610.2	646.8	752.2	797.3	1,002.2	983.0	1,258.3	1,446.1	1,647.3	1,732.7	2,082.4
Education	256.1	394.3	496.9	688.6	867.7	1,254.2	1,842.6	2,335.3	3,092.8	3,890.8	4,694.2	5,542.0
Health	107.0	175.5	203.6	252.4	292.8	338.8	389.9	445.2	576.9	690.9	1,246.2	1,522.9
Recreation, Religious, Culture	36.4	52.7	48.5	29.1	31.7	50.3	67.1	81.8	114.7	147.4	167.1	188.6
Personal services	51.7	64.4	82.7	106.6	133.3	161.5	179.6	203.5	235.0	272.7	308.3	359.3
TERTIARY SECTOR	5,316.6	6,877.8	8,479.5	10,477.5	12,864.2	15,716.4	18,279.4	21,383.6	25,376.4	29,663.9	35,319.1	41,340.9
Less: FISIM	(564.4)	(711.9)	(858.1)	(1,061.8)	(1,311.8)	(1,592.8)	(1,865.9)	(2,096.0)	(2,513.4)	(2,922.4)	(3,876.3)	(4,349.6)
TOTAL GROSS VALUE ADDED	9,023.6	11,733.7	14,693.6	18,651.2	23,774.0	29,447.4	35,711.6	42,989.4	51,199.1	61,501.2	74,599.0	89,826.7
Taxes less subsidies on Products	1,097.7	1,460.0	1,630.8	1,899.9	2,219.1	2,594.2	2,849.2	3,205.4	3,640.4	3,114.3	3,067.6	3,527.5
TOTAL G.D.P. AT MARKET PRICES	10,121.3	13,193.7	16,324.4	20,551.1	25,993.1	32,041.510	38,560.8	46,194.8	54,839.4	64,615.6	77,666.6	93,354.2

ALL ITEMS CONSUMER PRICE INDEX (CPI) AND ANNUAL INFLATION RATES

Consumer Price Index (2009=100)																
		Food and non alcoholic beverages	Alcoholic beverages and tobacco	Clothing and footwear	Housing water electricity gas and other fuels	Furniture, household equipment and maintenance	Health	Transport	Communication	Recreation and culture	Education	Restaurants and hotels	Miscellaneous goods and services	All Items	Monthly Inflation Rate (%)	Annual Inflation Rate (%)
	Weights	534.9	15.2	80.8	114.1	82.4	8.2	58.1	12.9	13.8	26.6	3.4	49.7	1,000.0		
2010	Jan	104.4	105.1	107.1	107.9	103.9	105.9	103.5	102.8	105.5	105.3	103.6	104.9	105.0	5.0	9.4
	Feb	104.9	104.5	107.2	108.8	103.7	106.2	106.7	102.1	105.2	104.4	103.6	104.9	105.5	0.4	9.2
	Mar	106.1	104.9	107.2	109.9	104.8	107.9	108.5	102.6	106.9	104.5	105.3	105.4	106.6	1.0	10.0
	Apr	107.1	105.9	108.1	111.8	105.6	109.6	108.0	102.4	107.2	105.6	106.7	105.8	107.5	0.9	9.5
	May	107.2	103.1	109.0	110.7	106.7	109.9	110.8	102.4	107.5	105.5	108.4	106.3	107.7	0.2	8.9
	Jun	106.3	103.0	109.4	113.5	107.8	110.4	113.8	102.4	107.9	105.3	109.2	107.9	107.9	0.2	7.9
	Jul	106.6	103.5	109.7	114.6	108.3	111.4	115.5	102.4	106.9	107.5	109.5	108.1	108.5	0.5	7.9
	Aug	106.0	104.5	110.7	125.6	108.6	113.9	113.4	102.6	107.7	108.0	108.2	108.6	109.5	0.9	7.7
	Sep	106.1	104.1	111.4	126.0	109.3	113.9	114.3	102.6	107.8	108.0	109.7	108.8	109.7	0.2	7.8
	Oct	105.6	104.9	111.7	126.4	109.4	114.7	111.8	102.3	107.9	108.0	110.5	109.1	109.4	-0.3	6.9
	Nov	106.4	105.1	111.3	125.8	110.2	113.4	111.6	102.2	109.0	108.0	111.5	111.1	109.9	0.4	6.6
	Dec	107.7	107.0	112.4	126.9	111.6	113.8	110.6	102.2	108.5	108.6	112.6	110.0	110.9	0.9	6.5
2011	Jan	108.9	106.6	111.9	126.5	111.2	112.6	111.8	102.6	109.2	111.6	112.1	111.5	111.6	0.7	6.3
	Feb	109.4	107.3	113.5	128.6	111.4	114.4	112.4	102.7	109.6	112.1	112.2	111.6	112.4	0.7	6.5
	Mar	110.5	107.1	115.3	130.0	112.0	115.0	114.9	102.8	109.9	114.2	115.4	112.2	113.6	1.1	6.6
	Apr	111.1	109.0	118.3	129.8	111.9	117.0	116.1	102.9	110.5	114.2	115.8	112.4	114.2	0.6	6.3
	May	111.0	108.3	119.2	131.0	113.4	117.8	117.0	102.9	113.1	113.2	116.4	112.5	114.6	0.3	6.3
	Jun	110.3	108.5	120.0	131.7	114.4	118.3	117.1	102.9	112.7	115.0	118.3	113.1	114.5	0.0	6.1
	Jul	111.9	108.5	120.7	132.2	116.4	118.4	119.4	102.9	114.1	116.2	115.5	114.0	115.9	1.2	6.9
	Aug	112.1	108.3	122.4	134.7	117.0	119.0	121.5	102.9	115.7	115.8	117.3	114.1	116.6	0.6	6.5
	Sep	112.5	108.1	121.4	135.7	119.0	119.9	121.7	102.6	115.4	116.9	116.6	113.7	117.0	0.4	6.6
	Oct	112.2	109.7	121.2	134.2	120.0	118.3	121.2	102.7	116.3	117.1	116.6	114.3	116.8	-0.2	6.7
	Nov	112.7	109.3	121.1	133.9	119.6	120.3	119.2	102.8	117.5	118.2	118.6	114.4	116.9	0.1	6.4
	Dec	113.4	109.2	121.7	134.6	118.6	120.1	120.8	102.7	116.8	118.4	117.0	115.3	117.5	0.5	6.0
2012	Jan	115.5	109.1	122.2	134.2	119.0	121.8	121.3	103.8	117.9	121.2	118.0	115.0	118.8	1.1	6.4
	Feb	115.4	110.4	122.7	134.7	120.0	122.8	122.5	104.1	118.0	122.9	118.0	115.9	119.1	0.3	6.0
	Mar	117.6	110.8	124.4	136.3	120.7	123.5	123.8	104.1	118.7	123.3	118.9	117.5	120.8	1.5	6.4
	Apr	118.2	111.6	125.9	137.2	121.9	124.3	124.5	104.1	119.3	123.6	119.6	118.7	121.6	0.7	6.5

Year	Period	Index 2009=100	Annual Inflation rate
2008	January	82.70	9.3
	February	84.78	9.5
	March	85.66	9.8
	April	85.91	10.1
	May	86.28	10.9
	June	87.43	12.1
	July	88.15	12.6
	August	88.93	13.2
	September	90.07	14.2
	October	91.15	15.2
	November	92.46	15.3
	December	94.71	16.6
2009	January	95.96	16.0
	February	96.61	14.0
	March	96.88	13.1
	April	98.17	14.3
	May	98.94	14.7
	June	100.02	14.4
	July	100.48	14.0
	August	101.61	14.3
	September	101.75	13.0
	October	102.34	12.3
	November	103.11	11.5
	December	104.11	9.9
2010	January	105.01	9.4
	February	105.47	9.2
	March	106.55	10.0
	April	107.48	9.5
	May	107.74	8.9
	June	107.93	7.9
	July	108.45	7.9
	August	109.45	7.7
	September	109.72	7.8
	October	109.44	6.9
	November	109.92	6.6
	December	110.86	6.5
2011	January	111.61	6.3
	February	112.36	6.5
	March	113.56	6.6
	April	114.24	6.3
	May	114.56	6.3
	June	114.52	6.1
	July	115.89	6.9
	August	116.60	6.5
	September	117.01	6.6
	October	116.80	6.7
	November	116.94	6.4
	December	117.47	6.0
2012	January	118.77	6.4
	February	119.09	6.0
	March	120.84	6.4
	April	121.63	6.5

INFLATION TRENDS 2000 - 2009

Year	End of Year Inflation
1990	110.6
1991	99.7
1992	180.7
1993	128.1
1994	38.3
1995	46.0
1996	35.2
1997	18.6
1998	30.6
1999	20.6
2000	30.1
2001	18.7
2002	26.7
2003	17.2
2004	17.5
2005	15.9
2006	8.2
2007	8.9
2008	16.6
2009	9.9
2010	6.5
2011	6.0

Source: CSO, Prices Statistics

ZAMBIA'S TRADE FLOWS IN ABSOLUTE ZAMBIAN KWACHA (2000 TO 2011)

Flow Year	Imports(cif)	Domestic Exports(fob)	Re-Exports(fob)	Total Exports(fob)	Trade Balance
2000	2,751,563,199,592	2,680,166,733,376	36,390,914,760	2,716,557,648,136	-35,005,551,456
2001	3,900,496,869,495	3,523,388,830,726	13,818,082,693	3,537,206,913,419	-363,289,956,076
2002	4,734,304,934,590	4,046,573,003,139	24,035,820,066	4,070,608,823,205	-663,696,111,385
2003	7,444,669,756,553	4,614,154,833,843	27,918,721,735	4,642,073,555,578	-2,802,596,200,975
2004	10,325,503,347,652	7,486,745,995,064	59,170,839,070	7,545,916,834,134	-2,779,586,513,518
2005	11,444,687,982,620	9,556,350,699,041	55,238,218,023	9,611,588,917,064	-1,833,099,065,556
2006	11,063,138,110,907	13,388,355,650,002	22,808,958,125	13,411,164,608,127	2,348,026,497,220
2007	15,945,376,837,943	18,301,362,191,730	97,855,426,894	18,399,217,618,625	2,453,840,780,682
2008	18,479,642,802,328	17,951,791,468,707	701,848,350,726	18,653,639,819,433	173,997,017,105
2009	19,123,920,627,951	20,324,345,158,885	1,052,545,471,859	21,376,890,630,744	2,252,970,002,793
2010	25,507,487,313,137	32,876,095,550,370	1,623,955,907,893	34,500,051,458,263	8,992,564,145,126
2011	34,952,221,308,124	42,035,955,496,346	1,796,262,816,977	43,832,218,313,322	8,879,997,005,198
Total:	165,673,013,090,892	176,785,285,611,229	5,511,849,528,821	182,297,135,140,050	16,624,122,049,158

ZAMBIA'S TRADE FLOWS IN ABSOLUTE US DOLLAR (2000 TO 2011)

Flow Year	Imports(cif)	Domestic Exports(fob)	Re-Exports(fob)	Total Exports(fob)	Trade Balance
2000	871,386,492	857,162,791	12,322,625	869,485,416.00	-1,901,076
2001	1,079,955,769	974,976,195	3,812,082	978,788,277.00	-101,167,492
2002	1,103,420,711	938,812,212	5,704,981	944,517,193.00	-158,903,518
2003	1,574,300,779	973,386,279	5,919,576	979,305,855.00	-594,994,924
2004	2,161,774,011	1,569,772,851	12,463,536	1,582,236,387.00	-579,537,624
2005	2,574,917,607	2,164,120,186	12,212,327	2,176,332,513.00	-398,585,094
2006	3,027,310,787	3,674,763,391	6,824,871	3,681,588,262.00	654,277,475
2007	4,006,998,096	4,591,793,327	25,682,698	4,617,476,025.00	610,477,929
2008	5,061,390,791	4,909,524,577	189,326,707	5,098,851,284	37,460,493
2009	3,831,581,658	4,102,130,891	212,500,100	4,314,630,991	483,049,333
2010	5,321,002,628	6,863,323,917	337,627,232	7,200,951,149	1,879,948,521
2011	7,177,669,615	8,643,678,779	371,709,764	9,015,388,543	1,837,718,928
Total:	37,791,708,944	40,263,445,396	1,196,106,499	41,459,551,895	3,667,842,951

Surveys/Activities being undertaken

- ☞ 2010 Census of Population and Housing Data Analysis and Report writing
- ☞ Economic Census Phase II Training of Field Staff
- ☞ Sample Vital Registration with Verbal Autopsy (SAVVY) Report writing
- ☞ Maternal Mortality Survey Data Collection

Available

- ☞ 2010/2011 Crop Forecasting Survey
- ☞ 2009 Zambia Sexual Behaviour Survey (ZSBS)
- ☞ Employment and Earnings Inquiry Report, 2009
- ☞ National Accounts Statistics Bulletin No.9 2005
- ☞ Labour-Force Survey Report, 2008
- ☞ 2007 Zambia Demographic and Health Survey (ZDHS)
- ☞ 2010 Census of population and Housing Preliminary Report (both Hard and soft copy)
- ☞ 2010 Selected Socio-Economic Indicators Report
- ☞ 2010 Zambia In Figures

Subscribe for your free electronic copy of “The Monthly” online at www.zamstats.gov.zm

The Editorial Team would like to thank all Media Institutions and Users of....

“The Monthly Bulletin”

Thank you for supporting us

Secretariat

John Kalumbi	- Director
Peter Mukuka	- Deputy Director
Richard Banda	- Research and Marketing Manager
Linda N. Chonya	- Senior Research Officer
Anthony Nkole	- Desktop Publishing Officer
Perry Musenge	- Assistant Desktop Publishing Officer
Petronella Kaputu	- Press Liaison Officer
Chisuwa S. Nalishuwa	- Assistant Field Co-ordinator
Daniel Chipaila	- Statistician
George Mhango	- Sales Officer

Editorial Team

John Kalumbi	- Director
Peter Mukuka	- Deputy Director (IRD)
Modesto Banda	- Deputy Director (AG)
William Mayaka	- Deputy Director (SOC)
Goodson Sinyenga	- Deputy Director (ECON)
Shebo Nalishebo	- Statistician
Josephine Chewa	- Statistician
Gerson Banda	- Statistician
Palver Sikanyiti	- Statistician
Linda Nyasulu	- Gender Analyst