



Republic of Zambia

# The Monthly

## Central Statistical Office

Volume 99

Website: [www.zamstats.gov.zm](http://www.zamstats.gov.zm)

June, 2011

### Foreword

Welcome to the Monthly presentation organised by the Dissemination Branch of the Central Statistical Office (CSO). The CSO embarks on vigorous information delivery strategy to major stakeholders and the media institutions in order to increase utilisation of statistical products and services. The office produces a number of statistical products in the Economic, Social, Agricultural and Environmental areas. The information collected in these areas may be used for various purposes including policy formulation, planning, implementation, monitoring and evaluation of programmes and projects.

This Monthly publication is an attempt to provide highlights of CSO's work and how it can help media institutions and the general public to make use of data and information for sustainable national development and decision-making.

I would like to urge our readers and users of statistical information to send to us any comments that may enhance statistical production and contribute to the improvement of this bulletin.

John Kalumbi  
Acting Director of Census and Statistics

30th June, 2011

#### **Inside this Issue**

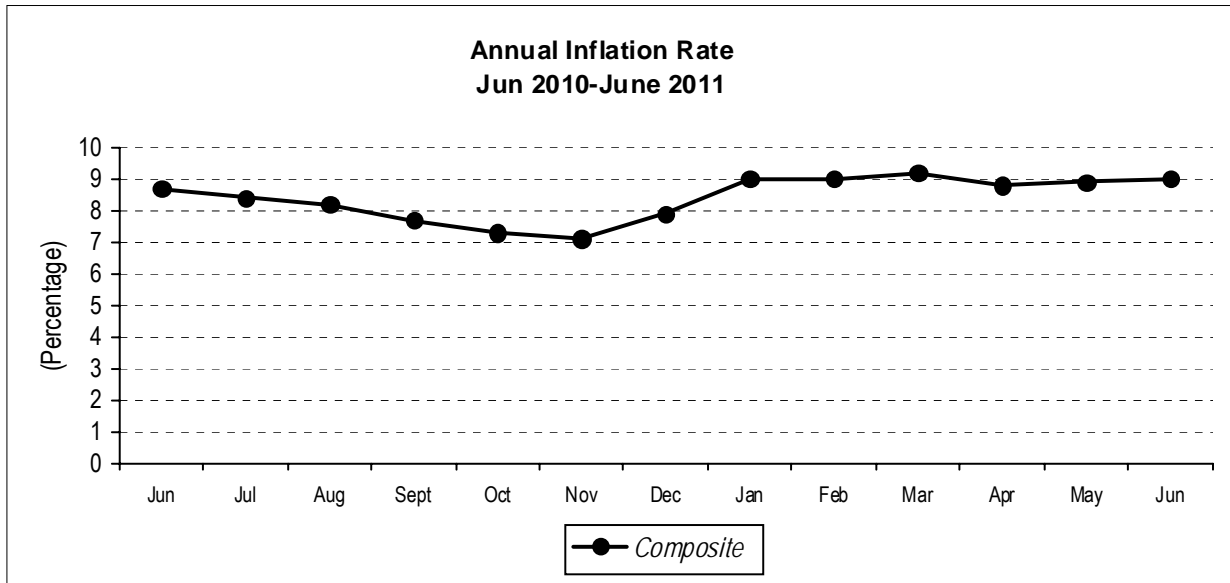
- ***June Inflation slightly increases to 9.0 percent***
- ***May 2011 records Trade Surplus***
- ***Economic Growth in the FNDP Period***
- ***2009 Formal Sector Employment***
- ***Update on the 2010 Census of Population and Housing!***
- ***Selected Socio - Economic Indicators***

# INFLATION

## *June Inflation slightly increases to 9.0 percent*

The annual rate of inflation, as measured by the all items Consumer Price Index (CPI), slightly increased to 9.0 percent in

June 2011, from 8.9 percent in May 2011. The increase is attributed to increases in some food prices.



Source: CSO, Price Statistics

## *Changes in annual inflation rates for CPI Main Groups*

Between May 2011 and June 2011, annual inflation rates increased for Food, beverages and tobacco; Furniture and household goods; and other goods and services. The annual inflation rates

reduced for Clothing and footwear; Household fuel and lighting; Medical care; Transport and communication; and Recreation and education.

Annual Inflation Rate: CPI Main Groups (Percent)

	Total	Food And Beverages	Clothing And Footwear	Rent Fuel & Lighting	Furniture And Household Goods	Medical care	Transport And Comms	Recreation And Education	Other Goods And Services
Jan 07 – Jan 06	9.8	1.0	34.9	15.1	16.5	24.9	22.8	15.9	11.4
Feb 07 – Feb 06	12.6	4.2	28.3	18.3	20.4	23.7	33.9	15.0	10.4
Mar 07 – Mar 06	12.7	4.9	26.9	15.8	21.6	22.1	33.5	14.9	11.0
Apr 07 – Apr 06	12.4	5.5	23.7	15.7	20.0	18.8	32.4	14.8	7.7
May 07 – May 06	11.8	5.7	18.8	17.1	19.2	16.5	28.2	10.4	7.0
Jun 07 – June 06	11.1	4.8	20.3	18.1	18.1	14.9	24.6	10.6	7.0
Jul 07 – July 06	11.2	6.7	19.4	14.9	17.4	14.0	18.2	10.0	7.7
Aug 07 - Aug 06	10.7	7.9	19.6	11.6	15.2	11.6	11.8	10.0	7.5
Sep 07 – Sep 06	9.3	6.2	17.9	11.2	15.5	11.4	9.7	8.1	7.7
Oct 07 – Oct 06	9.0	5.6	14.7	11.8	16.8	10.9	10.3	7.4	6.3
Nov 07 – Nov 06	8.7	5.2	16.3	10.7	15.8	10.2	11.6	7.1	6.7
Dec 07 – Dec 06	8.9	5.9	14.2	11.2	13.4	9.1	13.6	8.2	6.9
Jan 08 – Jan 07	9.3	6.9	12.5	13.4	17.1	8.4	7.7	6.8	7.0
Feb 08 – Feb 07	9.5	9.1	11.1	12.5	16.0	8.9	0.3	9.0	8.4
Mar 08 – Mar 07	9.8	9.1	11.2	12.2	16.1	10.0	1.1	10.3	9.4
Apr 08 – Apr 07	10.1	9.8	11.1	12.7	16.3	12.2	-0.2	11.1	9.4

	Total	Food And Beverages	Clothing And Footwear	Rent Fuel & Lighting	Furniture And Household Goods	Medical care	Transport And Comms	Recreation And Education	Other Goods And Services
May 08 – May 07	10.9	11.7	10.5	12.0	14.9	12.4	0.5	11.4	9.5
Jun 08 – June 07	12.1	15.6	9.7	11.4	13.4	12.2	-3.5	10.6	10.4
Jul 08 – Jul 07	12.6	14.2	9.3	14.9	14.2	13.9	4.7	11.0	11.3
Aug 08- Aug 07	13.2	16.3	6.3	14.5	13.3	12.9	5.3	11.2	10.7
Sep 08- Sep 07	14.2	16.2	5.6	17.7	14.8	11.8	11.5	11.5	10.4
Oct 08 – Oct 07	15.2	17.6	4.6	14.9	15.1	11.3	19.2	11.6	12.1
Nov 08 – Nov 07	15.3	18.5	2.7	14.5	16.1	10.3	16.4	12.4	12.5
Dec 08 – Dec 07	16.6	20.5	2.5	15.2	18.0	9.9	15.9	12.1	13.2
Jan 09 – Jan 08	16.0	21.3	3.0	8.9	13.8	9.2	18.3	11.7	15.2
Feb 09 – Feb 08	14.0	16.3	3.9	8.6	16.5	9.6	19.4	9.3	15.4
Mar 09 – Mar 08	13.1	13.9	5.9	10.4	16.3	10.1	19.7	7.9	15.2
Apr 09 – Apr 08	14.3	15.9	6.8	10.4	16.1	8.2	22.0	7.1	17.1
May 09 – May 08	14.7	16.1	7.9	10.7	21.2	8.0	16.6	6.0	20.0
Jun 09 – June 08	14.4	14.1	9.6	10.1	22.4	10.0	21.0	6.9	22.6
Jul 09 – Jul 08	14.0	14.9	9.9	7.9	22.1	10.2	13.0	8.9	21.6
Aug 09- Aug 08	14.3	14.6	11.4	11.7	21.7	10.3	10.4	10.1	20.6
Sep 09- Sep 08	13.0	13.9	13.6	9.9	21.4	13.3	1.3	9.7	20.5
Oct 09 – Oct 08	12.3	12.3	15.0	11.7	19.4	14.9	-3.2	12.0	24.7
Nov 09 – Nov 08	11.5	11.1	15.0	11.2	19.1	14.4	-3.1	11.0	23.6
Dec 09 – Dec 08	9.9	8.0	15.8	11.4	17.6	15.9	-3.4	10.6	26.0
Jan 10 – Jan 09	9.6	7.1	15.7	14.7	16.4	15.8	-4.0	10.5	23.0
Feb 10 – Feb 09	9.8	8.2	14.7	13.3	14.3	15.7	-1.1	9.9	21.1
Mar 10 – Mar 09	10.2	9.3	11.4	12.9	14.1	15.0	1.6	9.9	19.7
Apr 10 – Apr 09	9.2	7.3	11.4	14.4	13.0	15.0	1.6	9.8	20.2
May 10 – May 09	9.1	6.5	10.5	12.4	12.3	15.3	9.9	11.2	16.8
Jun 10 – June 09	7.8	3.8	9.9	15.7	10.1	14.4	11.1	10.8	12.8
Jul 10 – Jul 09	8.4	4.1	11.9	17.0	10.8	12.7	13.0	9.0	12.8
Aug 10- Aug 09	8.2	2.9	12.8	17.2	14.6	13.1	12.4	6.5	14.1
Sep 10- Sep 09	7.7	2.8	11.3	15.8	11.5	9.8	15.3	6.6	14.1
Oct 10 – Oct 09	7.3	3.4	9.5	15.6	11.3	8.7	12.2	4.3	10.2
Nov 10 – Nov 09	7.1	2.5	9.9	16.6	11.3	9.2	12.9	4.1	11.0
Dec 10 – Dec 09	7.9	4.4	10.0	16.4	12.9	7.6	11.2	3.5	7.6
Jan 11 – Jan10	9.0	5.2	9.3	20.8	14.0	8.3	14.0	3.2	7.7
Feb 11 – Feb 10	9.0	4.5	9.2	26.0	14.1	7.7	8.7	5.9	8.1
Mar 11 – Mar 10	9.2	3.8	12.3	28.3	12.9	8.3	6.4	10.0	8.6
Apr 11 – Apr 10	8.8	3.3	11.3	24.8	14.0	8.8	7.7	10.8	5.9
May 11 – May 10	8.9	4.2	11.9	26.5	11.6	8.7	4.5	10.8	5.4
Jun 11 – June10	9.0	5.3	10.6	23.6	12.0	7.9	2.9	10.3	6.2

Source: CSO, Price Statistics

### ***Contributions of different Items to overall inflation***

Of the total 9.0 percent annual inflation in June 2011, food products accounted for 2.5 percentage points, while non-food

products in the Consumer Price Index (CPI) accounted for a total of 6.5 percentage points.

Items	Percentage Points Contributions of different items to overall inflation												
	Jun 2010	Jul 2010	Aug 2010	Sept 2010	Oct 2010	Nov 2010	Dec 2010	Jan 2011	Feb 2011	Mar 2011	Ap 2011	May 2011	Jun 2011
Food Beverages and Tobacco	1.9	2.0	1.4	1.4	1.6	1.2	2.2	2.6	2.2	1.9	1.6	2.0	2.5
Clothing and Footwear	0.9	1.1	1.1	1.0	0.9	0.9	0.9	0.8	0.8	1.1	1.0	1.1	1.0
Rent and household energy	1.7	1.9	1.9	1.8	1.8	1.9	1.8	2.3	2.9	3.2	2.9	3.0	2.8
Furniture and Household Goods	1.2	1.3	1.8	1.4	1.4	1.4	1.6	1.7	1.7	1.5	1.7	1.4	1.5
Medical Care	0.1	0.1	0.1	0.1	0.1	0.1	0.1	0.1	0.1	0.1	0.1	0.1	0.1
Transport (fuel, airfares, new motor vehicles)	0.9	1.0	1.0	1.2	0.9	1.0	0.8	1.0	0.7	0.5	0.6	0.4	0.2

Items	Percentage Points Contributions of different items to overall inflation												
	Jun 2010	Jul 2010	Aug 2010	Sept 2010	Oct 2010	Nov 2010	Dec 2010	Jan 2011	Feb 2011	Mar 2011	Ap 2011	May 2011	Jun 2011
Recreation and Education	0.7	0.6	0.4	0.4	0.3	0.3	0.2	0.2	0.4	0.6	0.7	0.7	0.7
Other Goods and Services	0.4	0.4	0.5	0.4	0.3	0.3	0.3	0.3	0.2	0.3	0.2	0.2	0.2
<b>All Items</b>	<b>7.8</b>	<b>8.4</b>	<b>8.2</b>	<b>7.7</b>	<b>7.3</b>	<b>7.1</b>	<b>7.9</b>	<b>9.0</b>	<b>9.0</b>	<b>9.2</b>	<b>8.8</b>	<b>8.9</b>	<b>9.0</b>

Source: CSO, Price Statistics

### ***The Annual Food and Non-food Inflation rate***

The annual food inflation rate was recorded at 5.3 percent in June 2011. This is an increase from 4.2 percent in May, 2011. Furthermore, the annual non-food

inflation rate was recorded at 12.3 percent in June, 2011. This is a decrease from 13.3 percent in May 2011.

#### **Annual Inflation Rates: Food and Non food**

Period	Total	Food	Non-Food
Jan 06 – Jan 05	12.2	12.8	11.5
Feb 06 - Feb 05	10.3	10.2	10.3
Mar 06 - Mar 05	10.7	10.9	10.4
Apr 06 – Apr 05	9.4	8.3	10.6
May 06 – May 05	8.6	5.6	12.0
Jun 06 - Jun 05	8.5	5.4	11.8
Jul 06 - Jul 05	8.7	4.3	13.6
Aug 06 – Aug 05	8.0	0.4	16.4
Sep 06 – Sep 05	8.2	1.5	15.7
Oct 06 - Oct 05	7.9	1.0	15.4
Nov 06 - Nov 05	8.1	0.8	16.2
Dec06 – Dec 05	8.2	-0.2	18.1
Jan 07 - Jan 06	9.8	1.0	20.0
Feb 07 - Feb 06	12.6	4.2	22.1
Mar 07 - Mar 06	12.7	4.9	21.5
Apr 07 – Apr 06	12.4	5.5	20.1
May 07 – May 06	11.8	5.7	18.2
Jun 07 - Jun 06	11.1	4.8	17.7
Jul 07- Jul 06	11.2	6.7	15.6
Aug 07– Aug 06	10.7	7.9	13.3
Sep 07 – Sep 06	9.3	6.2	12.4
Oct 07- Oct 06	9.0	5.6	12.2
Nov 07- Nov 06	8.7	5.2	12.2
Dec07 – Dec 06	8.9	5.9	11.9
Jan 08 - Jan 07	9.3	6.9	11.7
Feb 08 - Feb 07	9.5	9.1	10.0
Mar 08 - Mar 07	9.8	9.1	10.4
Apr 08– Apr 07	10.1	9.8	10.5
May 08 – May 07	10.9	11.7	10.1
Jun 08 - Jun 07	12.1	15.6	8.8
Jul 08- Jul 07	12.6	14.2	11.2
Aug 08– Aug 07	13.2	16.3	10.4
Sep 08 – Sep 07	14.2	16.2	12.4
Oct 08- Oct 07	15.2	17.6	13.0

Period	Total	Food	Non-Food
Nov 08- Nov 07	15.3	18.5	12.4
Dec 08 – Dec 07	16.6	20.5	12.9
Jan 09 - Jan 08	16.0	21.3	11.1
Feb 08 - Feb 07	14.0	16.3	11.7
Mar 09 - Mar 08	13.1	13.9	12.3
Apr 09– Apr 08	14.3	15.9	12.7
May 09 – May 08	14.7	16.1	13.3
Jun 09 - Jun 08	14.4	14.1	14.7
Jul 09- Jul 08	14.0	14.9	13.1
Aug 09– Aug 08	14.3	14.6	13.9
Sep 09 – Sep 08	13.0	13.9	12.1
Oct 09- Oct 08	12.3	12.3	12.3
Nov 09- Nov 08	11.5	11.1	11.9
Dec 09 – Dec 08	9.9	8.0	11.8
Jan 10 – Jan 09	9.6	7.1	12.0
Feb 10 – Feb 09	9.8	8.2	11.3
Mar 10 - Mar 09	10.2	9.3	11.0
Apr 10– Apr 09	9.2	7.3	11.2
May 10 – May 09	9.1	6.5	11.6
Jun 10 - Jun 09	7.8	3.8	11.8
Jul 10- Jul 09	8.4	4.1	12.6
Aug10– Aug 09	8.2	2.9	13.4
Sep 10 – Sep 09	7.7	2.8	12.5
Oct 10 - Oct 09	7.3	3.4	11.0
Nov10- Nov 09	7.1	2.5	11.5
Dec 10– Dec 09	7.9	4.4	11.3
Jan 11 – Jan 10	9.0	5.2	12.8
Feb 11 – Feb 10	9.0	4.5	13.5
Mar 11 - Mar 10	9.2	3.8	14.5
Apr 11– Apr 10	8.8	3.3	14.0
May 11 – May 10	8.9	4.2	13.3
Jun 11 - Jun 10	9.0	5.3	12.3

Source: CSO, Price Statistics

### ***National Average Prices of Selected Products***

A comparison of retail prices between May 2011 and June 2011, shows that the national average price of a 25 kg bag of white breakfast mealie meal reduced by 2.3 percent, from K49,661 to K48,522. The average price of a 25 kg bag of white roller mealie meal reduced by 3.8 percent, from K35,391 to K34,054. The national average price of a 20 litre tin of maize grain reduced by 9.7 percent, from K18,464 to K16,680.

The national average price of 1kg of tomatoes increased by 30.6 percent, from K3,272 to K4,273. The average price of 1kg of onions increased by 6.5 percent, from K6,565 to K6,992. The national average price of 1kg of imported rice increased by 15.1 percent, from K25,613 to K29,487. The average price of 750mls of imported cooking oil increased by 4.6 percent, from K10,802 to K11,298. The national average price of 1kg of cassava meal increased by 4.4 percent, from K3,839 to K4,007.

## National Average Prices for selected Products and Months

Product Description	2011						Percentage Change
	January	February	March	April	May	June	Jun -11/May -11
White breakfast mealie meal 25Kg	52,605	52,305	51,867	51,294	49,661	48,522	-2.3
White Roller mealie meal 25Kg	37,408	37,778	38,048	36,417	35,391	34,054	-3.8
White Maize grain 20 litre tin	21,601	21,746	21,381	21,374	18,464	16,680	-9.7
Rice Imported 1 Kg	27,097	26,719	24,969	25,112	25,613	29,487	15.1
Wheat Plain Flour (NMC) 2.5 Kg	17,666	17,062	17,660	18,784	18,835	19,325	2.6
Millet 5 litre tin	11,679	13,287	13,029	13,241	12,841	12,995	1.2
Sorghum 5 litre tin	13,226	14,007	13,428	13,496	12,855	13,243	3.0
Cassava meal 1Kg	5,362	3,506	3,716	4,089	3,839	4,007	4.4
Fillet Steak 1 Kg	34,644	35,702	35,397	35,847	35,503	35,261	-0.7
Mince Meat 1 Kg	28,801	28,621	28,143	28,174	26,843	26,792	-0.2
Mixed Cut 1 Kg	22,645	22,893	23,181	23,204	22,467	22,264	-0.9
T-bone 1 Kg	30,750	30,698	30,802	31,336	31,281	30,949	-1.1
Offals 1 Kg	13,009	12,679	12,864	13,070	13,223	13,387	1.2
Dressed chicken 1 Kg	17,043	17,089	17,660	17,902	17,428	16,919	-2.9
Dried Kapenta Mpulungu 1 kg	59,597	57,869	54,071	51,741	54,836	52,064	-5.1
Dried Kapenta Siavonga 1 kg	60,844	60,128	59,341	57,686	59,799	55,629	-7.0
Dried Kapenta Chisense 1 kg	37,396	34,137	36,444	34,136	36,005	32,302	-10.3
Dried bream 1 Kg	39,806	35,673	36,661	36,839	35,354	35,316	-0.1
Fresh milk (Pasteurised) Local 500 ml	3,599	3,537	3,554	3,572	3,563	3,573	0.3
Eggs 1 Unit	8,831	8,827	8,971	9,035	9,038	9,090	0.6
Cooking oil Imported Any 750 ml	9,656	10,205	10,448	10,671	10,802	11,298	4.6
Onion 1kg	6,019	6,143	5,762	6,794	6,565	6,992	6.5
Carrots 1kg	5,575	5,616	5,318	5,271	5,176	5,277	2.0
Tomatoes 1kg	3,984	4,103	3,396	3,001	3,272	4,273	30.6
Spinach 1kg	3,462	2,891	2,695	2,427	2,534	2,846	12.3
Fresh okra 1kg	5,952	5,445	5,022	4,422	5,004	5,514	10.2
Impwa 1kg	3,420	2,983	2,763	2,516	2,658	3,016	13.5
Irish potatoes 1kg	4,673	4,336	4,181	3,910	4,092	4,313	5.4
Raw cassava tubers Unsoaked 1kg	1,797	1,713	2,034	1,969	1,946	1,953	0.4
Chikanda tubers 1kg	16,973	17,292	17,957	15,785	14,055	14,313	1.8
Air fare Lusaka/London British Airways 1 Way	5,390,000	5,500,000	5,507,600	5,467,200	5,932,800	5,932,800	0.0
Air Fare Lusaka/Ndola Proflight Zambia 1 way	833,000	833,000	833,000	816,000	833,000	833,000	0.0
Bed & continental Breakfast 3 to 5 star hotel	598,474	705,824	692,945	687,012	685,653	691,719	0.9
Takeaway chicken & chips	17,556	16,589	17,414	17,275	17,134	17,860	4.2

Source: CSO, Price Statistics

# INTERNATIONAL MERCHANDISE TRADE

## May 2011 records Trade Surplus

Zambia recorded a trade surplus valued at K774.8 billion in May 2011, representing a nominal increase in growth of about 29.9 percent from K1,105.4 billion recorded in April 2011. This means that the country exported more in May 2011 than it imported, in the same month, in nominal terms.

Since January 2011, the country has had monthly trade surpluses with the highest valued at K1,484.3 billion recorded in January 2011 and the lowest in February 2011, valued at K645.2 billion.

**Total Exports (fob) and Imports (cif), January to May\* 2011 (K' Millions)**

Months	Imports(cif)	Domestic Exports(fob)	Re-Exports(fob)	Total Exports(fob)	Trade Balance
January®	2,091,025	3,440,002	135,310	3,575,312	1,484,287
February®	2,372,536	2,939,608	78,096	3,017,704	645,168
March®	2,809,345	3,414,123	260,255	3,674,378	865,032
April®	2,438,607	3,262,399	281,589	3,543,988	1,105,381
May*	2,615,136	3,234,495	155,462	3,389,956	774,820
<b>Total:</b>	<b>12,326,650</b>	<b>16,290,626</b>	<b>910,712</b>	<b>17,201,338</b>	<b>4,874,689</b>

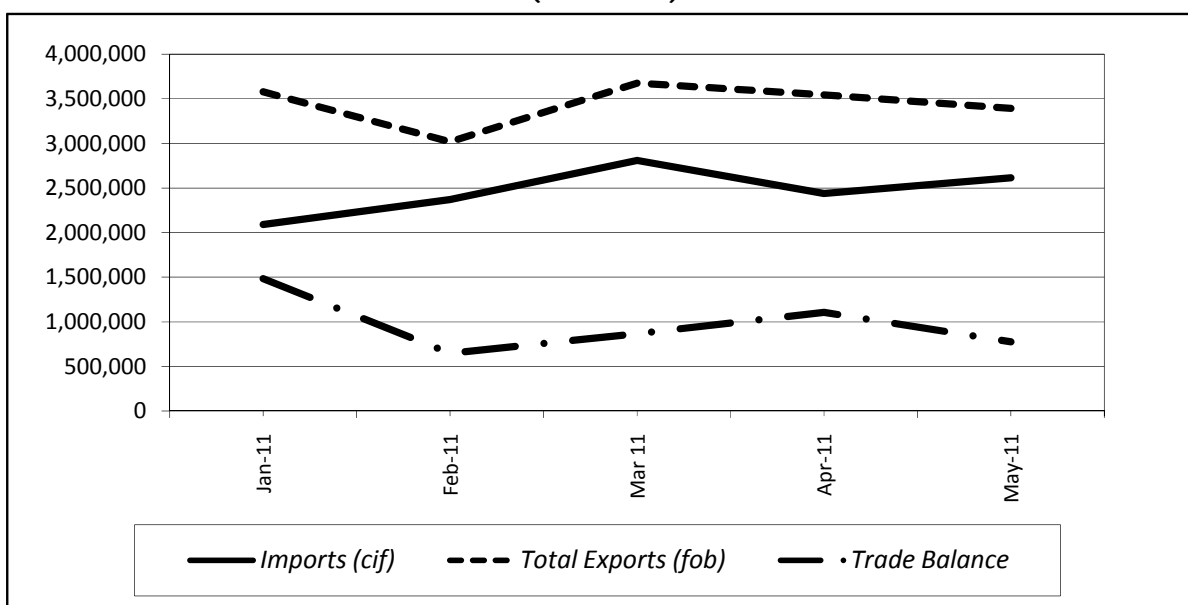
Source: CSO, International Trade Statistics, 2011

These trade data are compiled based on the General Trade System

Note: (\*) Provisional

(®) Revised

**Total Exports (fob), Imports (cif) and Trade Balance, January to May\* 2011 (K' Millions)**



Source: CSO, International Trade Statistics, 2011 and 2011

These trade data are compiled based on the General Trade System

Note: January 2011 to April 2011 figures have been revised, while May 2011 figures are provisional

## ***Exports by Major Product Categories May and April 2011***

Zambia's major export products in May 2011 were from the Intermediate goods category (*mainly comprising copper cathodes and sections of refined copper and copper blister*) accounting for 86.8 percent. Other exports were from the Consumer goods, Raw materials and Capital goods categories; which

collectively accounted for 13.3 percent of total exports in May 2011. This implies that between May and April 2011, the country has been a net exporter of Intermediate goods, mainly Metals and their articles, accounting for an average of 89.1 percent of the total exports.

**Exports by Major Product Categories May and April 2011**

Description	May 2011*		April 2011®	
	Value (K' Million)	% Share	Value (K' Million)	% Share
Consumer Goods	220,397	6.5	157,743	4.5
Raw Materials	130,766	3.9	114,565	3.2
Intermediate Goods	2,941,942	86.8	3,237,040	91.3
Capital Goods	96,852	2.9	34,640	1.0
<b>Total:</b>	<b>3,389,956</b>	<b>100.0</b>	<b>3,543,988</b>	<b>100.0</b>

Source: CSO, International Trade Statistics, 2011

Note: (\*) Provisional  
(®) Revised

## ***Zambia's Metal Exports and Non-Traditional Exports (NTEs) May and April 2011***

There has been a decrease in the total value of exports from K3,544.0 billion to K3,390.0 billion between April and May 2011. The overall contribution of Metals and their products to the total export

earnings in May and April 2011 averaged about 84.0 percent. The share of NTEs recorded an average of about 16.0 percent in revenue earnings between May and April 2011.

**Zambia's Metal Exports and Non-Traditional Exports (NTEs) May and April 2011**

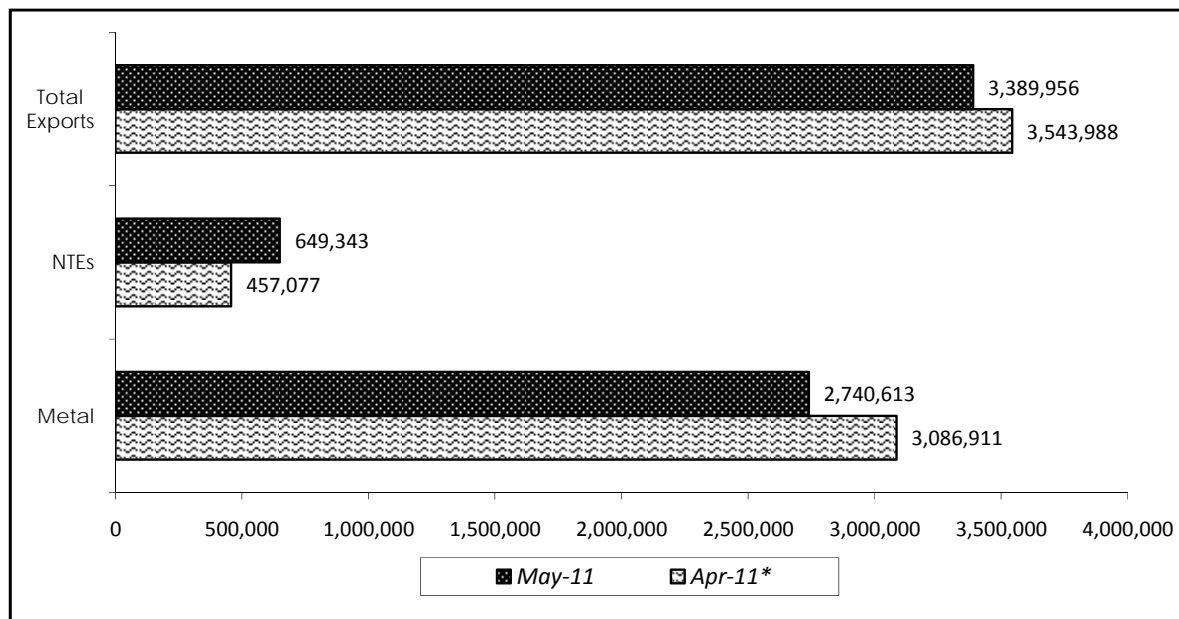
GROUP	May 2011*		April 2011®	
	Value (K' Million)	% Share	Value (K' Million)	% Share
Traditional Exports (mainly Metals)	2,740,613	80.8	3,086,911	87.1
Non-Traditional Exports	649,343	19.2	457,077	12.9
<b>Total Exports</b>	<b>3,389,956</b>	<b>100.0</b>	<b>3,543,988</b>	<b>100.0</b>

Source: CSO, International Trade Statistics, 2011

Note: (\*) Provisional  
(®) Revised



### Zambia's Metals Exports and Non-Traditional Exports (NTEs) May and April 2011, (K' Million)



Source: CSO, International Trade Statistics, 2011

Note that the April figures are revised while the May figures are provisional

### Zambia's Major Export Destinations by Product in May 2011

Zambia's major export destination in May 2011 was Switzerland, which accounted for 56.3 percent. The major export products to Switzerland were; Cathodes & Sections of Cathodes of refined Copper accounting for about 78.0 percent.

China was the second major export destination of Zambia's total exports accounting for 14.6 percent. The major export products to China were Copper blisters (47.1 percent); and Cathodes & sections of cathodes of refined copper (26.8 percent).

South Africa was the third major export destination of Zambia's exports accounting for 9.9 percent. The main export products to South Africa were Cathodes and sections of cathodes of refined copper (39.1 percent); and Wire of refined copper, maximum cross-sectional dimension >6mm, contributing

about 15.5 percent to the country's share of exports.

The Democratic Republic of Congo was the fourth major export destination of Zambia's exports, accounting for 4.3 percent. The main export products to the Democratic Republic of Congo were Sulphuric Acid; and Sulphur, sublimed or precipitated; colloidal sulphur, accounting for 15.8 and 11.9 percent, respectively.

The United Kingdom was the fifth major export destination of Zambia's total exports accounting for 3.1 percent. The major export products to the United Kingdom were Cathodes & Sections of Cathodes of refined copper, accounting for about 94.2 percent.

These five countries collectively accounted for 88.2 percent of Zambia's total export earnings in May 2011.

### Zambia's Five Major Export Destinations by Product for May 2011\*

Country / Hs-Code	Description	May 2011 *	
		Value (K' Million)	% Share
<b>SWITZERLAND</b>		<b>1,910,026</b>	<b>100.0</b>
74031100	Cathodes and sections of cathodes of refined copper	1,489,295	78.0
74091900	Plates, sheets and strip, of refined copper, uncoil	201,443	10.5
74031910	Copper blister	185,237	9.7
26203000	Ash and residues containing mainly copper	22,557	1.2
26050000	Cobalt ores and concentrates	5,158	0.3
26030000	Copper ores and concentrates	4,981	0.3
74032900	Copper (excl. Master) alloys, nes, unwrought	1,306	0.1
26190000	Slag, dross, etc, from the manufacture of iron or	25	0.0
78042000	Powders and flakes of lead	23	0.0
00000010	Talk time	0	0.0
Other Products		0	0.0
<b>% of Total May Exports</b>		<b>56.3</b>	
<b>CHINA</b>		<b>495,094</b>	<b>100.0</b>
74031910	Copper blister	233,388	47.1
74031100	Cathodes and sections of cathodes of refined copper	132,651	26.8
74032900	Copper (excl. Master) alloys, nes, unwrought	65,548	13.2
81059000	Other: articles of cobalt, nes	38,237	7.7
26040000	Nickel ores and concentrates	10,486	2.1
28220010	Cobalt oxides and hydroxides: commercial cobalt ox	9,399	1.9
44079900	Wood, nes sawn or chipped lengthwise, sliced or pe	1,777	0.4
26030000	Copper ores and concentrates	867	0.2
26203000	Ash and residues containing mainly copper	795	0.2
24012000	Tobacco, partly or wholly stemmed/stripped	781	0.2
Other Products		1,164	0.2
<b>% of Total May Exports</b>		<b>14.6</b>	
<b>SOUTH AFRICA</b>		<b>336,126</b>	<b>100.0</b>
74031100	Cathodes and sections of cathodes of refined copper	131,346	39.1
74081100	Wire of refined copper, maximum cross-sectional dimension >6mm	52,261	15.5
71081300	Semi-manufactured gold (incl. Gold plated with pla	48,150	14.3
81059000	Other: articles of cobalt, nes	41,258	12.3
17011100	Raw cane sugar, in solid form	13,636	4.1
85444900	Electric conductors, nes, for a voltage <=80 v, no	10,816	3.2
28220010	Cobalt oxides and hydroxides: commercial cobalt ox	5,226	1.6
74031910	Copper blister	4,391	1.3
17049000	Sugar confectionery (incl. White chocolate), not c	2,348	0.7
84089000	Compression-ignition internal combustion piston en	1,789	0.5
Other Products		24,904	7.4
<b>% of Total May Exports</b>		<b>9.9</b>	
<b>CONGO DR</b>		<b>145,905</b>	<b>100.0</b>
28070010	Sulphuric acid: oleum in bulk	23,094	15.8
28020010	Sulphur, sublimed or precipitated; colloidal sulph	17,425	11.9
25232900	Portland cement (excl. White)	16,231	11.1
15162000	Vegetable fats and oils and their fractions, hydro	13,948	9.6
11010000	Wheat or meslin flour	9,389	6.4
33029010	Other mixtures with basis of odoriferous subst.inc	7,039	4.8
28321010	Sodium sulphites in bulk	4,631	3.2
25221000	Quicklime	3,897	2.7

Country / Hs-Code	Description	May 2011 *	
		Value (K' Million)	% Share
36020090	Other prepared explosives, (excl. Propellant powder)	3,870	2.7
17011100	Raw cane sugar, in solid form	2,923	2.0
Other Products		43,457	29.8
<b>% of Total May Exports</b>		<b>4.3</b>	
<b>UNITED KINGDOM</b>		<b>103,513</b>	<b>100.0</b>
74031100	Cathodes and sections of cathodes of refined copper	97,515	94.2
07109000	Mixtures of vegetables, frozen	2,597	2.5
06031100	Fresh cut roses and buds	1,362	1.3
74091900	Plates, sheets and strip, of refined copper, uncoil	795	0.8
26203000	Ash and residues containing mainly copper	764	0.7
04090000	Natural honey	359	0.3
84099990	Other: parts for compression-ignition internal com	87	0.1
90154000	Photogrammetrical, surveying instruments and appli	9	0.0
90328900	Automatic regulating or controlling instruments an	9	0.0
71031000	Precious (excl. Diamonds) or semi-precious stones,	6	0.0
Other Products		9	0.0
<b>% of Total May Exports</b>		<b>3.1</b>	
<b>Other Destination</b>		<b>399,292</b>	<b>11.8</b>
<b>Total Value of May Exports</b>		<b>3,389,956</b>	

Source: CSO, International Trade Statistics, 2011

Note: (\*) Provisional

### ***Export Market Shares by Regional Groupings, May and April 2011***

The Southern African Development Community (SADC) regional grouping was the largest market for Zambia's total exports, accounting for 21.9 percent in May 2011. Within SADC, South Africa was the dominant market in May and April 2011 with 45.3 and 66.8 percent respectively. Congo (DR) was second in both May and April 2011 with 19.7 and 16.3 percent, respectively. Other notable markets were Namibia, Zimbabwe and Mauritius.

Asia was the second largest market for Zambia's total exports, accounting for 17.0 percent in May 2011. Within Asia, China was the dominant market in both May and April 2011 with 86.0 and 95.5 percent, respectively. Saudi Arabia was the second dominant market in May 2011 with 8.4 percent. Other notable markets were India and Hong Kong.

The Common Market for Eastern and Southern Africa (COMESA) grouping of countries was the third largest market for Zambia's total exports accounting for 9.8 percent in May 2011. Within COMESA, Congo (DR) was the dominant market with 43.8 percent in May 2011 and 50.3 percent in April 2011. Zimbabwe was the second dominant market in both May and April 2011 with 21.4 and 25.2 percent, respectively. Other notable markets were Mauritius, Malawi and Kenya.

The European Union (EU) was the fourth largest market for Zambia's total exports accounting for 3.7 percent in May 2011. Within the EU, the United Kingdom was the dominant market with 82.0 and 68.8 percent in May and April 2011, respectively. Luxembourg was the second dominant market in May 2011 with 9.1 percent. Other notable markets were Netherlands and Germany.

### Export Market Shares by Regional Groupings, May and April 2011 (K' Millions)

GROUPING	May 2011*		GROUPING	April 2011®	
	Value (K' Million)	% Share		Value (K' Million)	% Share
<b>SADC</b>	<b>741,229</b>	<b>100.0</b>	<b>SADC</b>	<b>750,317</b>	<b>100.0</b>
South Africa	336,126	45.3	South Africa	501,322	66.8
Congo DR	145,905	19.7	Congo DR	122,536	16.3
Namibia	71,221	9.6	Zimbabwe	61,501	8.2
Zimbabwe	71,221	9.6	Mauritius	17,678	2.4
Mauritius	54,231	7.3	Malawi	13,631	1.8
Other SADC	62,525	8.4	Other SADC	33,648	4.5
<b>% of Total May Exports</b>	<b>21.9</b>		<b>% of Total April Exports</b>	<b>21.2</b>	
<b>ASIA</b>	<b>576,011</b>	<b>100.0</b>	<b>ASIA</b>	<b>657,703</b>	<b>100.0</b>
China	495,094	86.0	China	628,239	95.5
Saudi Arabia	48,279	8.4	United Arab Emirates	23,059	3.5
United Arab Emirates	23,110	4.0	India	5,538	0.8
India	8,082	1.4	Hong Kong	401	0.1
Hong Kong	1,194	0.2	Japan	176	0.0
Other ASIA	252	0.0	Other ASIA	289	0.0
<b>% of Total May Exports</b>	<b>17.0</b>		<b>% of Total April Exports</b>	<b>18.6</b>	
<b>COMESA</b>	<b>333,287</b>	<b>100.0</b>	<b>COMESA</b>	<b>243,764</b>	<b>100.0</b>
Congo DR	145,905	43.8	Congo DR	122,536	50.3
Zimbabwe	71,221	21.4	Zimbabwe	61,501	25.2
Mauritius	54,231	16.3	Mauritius	17,678	7.3
Malawi	31,124	9.3	Kenya	14,857	6.1
Kenya	19,377	5.8	Malawi	13,631	5.6
Other COMESA	11,429	3.4	Other COMESA	13,560	5.6
<b>% of Total May Exports</b>	<b>9.8</b>		<b>% of Total April Exports</b>	<b>6.9</b>	
<b>EUROPEAN UNION</b>	<b>126,208</b>	<b>100.0</b>	<b>EUROPEAN UNION</b>	<b>204,294</b>	<b>100.0</b>
United Kingdom	103,513	82.0	United Kingdom	140,629	68.8
Luxembourg	11,520	9.1	Belgium	35,742	17.5
Germany	4,144	3.3	Luxembourg	19,004	9.3
Netherlands	3,958	3.1	Germany	4,166	2.0
Belgium	2,494	2.0	Netherlands	3,223	1.6
Other EU	580	0.5	Other EU	1,530	0.7
<b>% of Total May Exports</b>	<b>3.7</b>		<b>% of Total April Exports</b>	<b>5.8</b>	
<b>Total Value of May Exports</b>	<b>3,389,956</b>		<b>Total Value of April Exports</b>	<b>3,543,988</b>	

Source: CSO, International Trade Statistics, 2011

Note: (\*) Provisional

(®) Revised figures

### Imports by Major Product Categories, May and April 2011

Zambia's major import products by category in May 2011 were from the Capital goods category, accounting for 30.5 percent. The Raw Materials category was second with 28.1 percent, followed by the Intermediate goods Category with

28.0 percent. The Consumer goods Category was fourth with 13.3 percent. This means that between May and April 2011, the country has imported more Capital goods and Raw materials.

### Imports (cif) by Major Product Categories May and April 2011, (K' Millions)

Description	May 2011*		April 2011®	
	Value (K' Million)	% Share	Value (K' Million)	% Share
Consumer Goods	347,783	13.3	338,072	13.9
Raw Materials	736,001	28.1	754,672	30.9
Intermediate Goods	733,295	28.0	663,516	27.2
Capital Goods	798,057	30.5	682,346	28.0
<b>Total:</b>	<b>2,615,136</b>	<b>100.0</b>	<b>2,438,607</b>	<b>100.0</b>

Source: CSO, International Trade Statistics, 2011

Note: (\*) Provisional  
(®) Revised figures

### Zambia's Major Import Sources by Product, May 2011

The major source of Zambia's imports in May 2011 was South Africa, accounting for 33.0 percent. The major import products from South Africa were Crushing or grinding machines for earth, stone, ores; and Mineral or chemical fertilizers with nitrogen, contributing 4.6 and 2.0 percent, respectively to the share of imports.

The second main source of Zambia's imports in May 2011 was Congo (DR)

accounting for 22.1 percent of the total value of imports. The major import products from Congo (DR) were Copper ores and concentrates, accounting for 80.1 percent.

Other notable sources of Zambia's imports were China, the United Arab Emirates and India, collectively accounting for 17.4 percent of Zambia's total imports in May 2011.

### Zambia's Major Import Sources by Products, May 2011\* (K' Millions)

Country / Hs-Code	Description	May 2011*	
		Value (K' Million)	% Share
<b>SOUTH AFRICA</b>		<b>862,389</b>	<b>100.0</b>
84742000	Crushing or grinding machines for earth, stone, ores, etc	39,860	4.6
31052000	Mineral or chemical fertilizers with nitrogen, pho	17,662	2.0
84314900	Parts of machinery of 84.26, 84.29 and 84.30, nes	16,960	2.0
84138100	Pumps for liquids, nes	14,853	1.7
84749000	Parts of machinery of 84.74	12,935	1.5
84139100	Parts of pumps for liquids	12,855	1.5
31023000	Ammonium nitrate	12,383	1.4
84295200	Self-propelled bulldozers... With a 360x revolving	12,205	1.4
87042110	Diesel dual purpose vehicles for both persons & go	12,026	1.4
28020010	Sulphur, sublimed or precipitated; colloidal sulph	10,924	1.3
Other Products		699,728	81.1
<b>% of Total May Imports</b>		<b>33.0</b>	
<b>CONGO DR</b>		<b>577,489</b>	<b>100.0</b>
26030000	Copper ores and concentrates	462,731	80.1
28220010	Cobalt oxides and hydroxides; commercial cobalt ox	82,859	14.3
26050000	Cobalt ores and concentrates	30,674	5.3
84295900	Self-propelled bulldozers, excavators..., nes	286	0.0
27150000	Bituminous mixtures based on natural asphalt, bitu	120	0.0
84138100	Pumps for liquids, nes	99	0.0
84089000	Compression-ignition internal combustion piston en	85	0.0
84122100	Hydraulic power engines and motors, linear acting	76	0.0

Country / Hs-Code	Description	May 2011 *	
		Value (K' Million)	% Share
87032390	Vehicles with engine capacity exceeding 1500cc but	74	0.0
40116300	Of a kind used On construction or industrial...exc	74	0.0
Other Products		412	0.1
<b>% of Total May Imports</b>		<b>22.1</b>	
<b>CHINA</b>		<b>222,482</b>	<b>100.0</b>
84742000	Crushing or grinding machines for earth, stone, ores, etc	40,595	18.2
85171200	Telephones for cellular networks or for other wireless networks	15,296	6.9
84291900	Self-propelled bulldozers and angledozers, (excl.	13,341	6.0
85447000	Optical fibre cables made up of individually sheat	12,576	5.7
85171100	Line telephone sets with cordless handsets	8,274	3.7
73089090	Structures and parts of structures, nes, of iron o	6,620	3.0
39201090	Other-plates..., of polymers of ethylene, not rein	6,384	2.9
39201010	Plates..., of polymers of ethylene, not reinforced	6,195	2.8
84195000	Heat exchange units	5,845	2.6
84743900	Mixing or kneading machines for earth, stone, ores, etc	4,541	2.0
Other Products		102,814	46.2
<b>% of Total May Imports</b>		<b>8.5</b>	
<b>UNITED ARAB EMIRATES</b>		<b>120,864</b>	<b>100.0</b>
31052000	Mineral or chemical fertilizers with nitrogen, pho	29,097	24.1
31021000	Urea	24,906	20.6
31023000	Ammonium nitrate	9,243	7.6
84089000	Compression-ignition internal combustion piston en	3,838	3.2
28080010	Nitric acid; sulphonitric acids in bulk	3,783	3.1
84792000	Machinery for the extraction/preparation of animal/vegetable fats or oil	3,280	2.7
85171200	Telephones for cellular networks or for other wireless networks	2,900	2.4
30049000	Other medicaments of mixed or unmixed products, fo	2,418	2.0
63090000	Worn clothing and other worn articles	2,135	1.8
28362010	Disodium carbonate - foshe ash-used in industry	1,904	1.6
Other Products		37,358	30.9
<b>% of Total May Imports</b>		<b>4.6</b>	
<b>INDIA</b>		<b>111,187</b>	<b>100.0</b>
30049000	Other medicaments of mixed or unmixed products, fo	22,081	19.9
84741000	Sorting, screening, separating or washing machines for earth, stone...	6,540	5.9
73082000	Towers and lattice masts of iron or steel	6,070	5.5
84749000	Parts of machinery of 84.74	5,902	5.3
84541000	Converters of a kind used in metallurgy or in metal foundries	4,067	3.7
72192200	Hot-rolled stainless steel, uncoiled, >=600mm by 4.75-10mm	3,117	2.8
30043900	Medicaments of other hormones, for retail sale, ne	2,481	2.2
73089090	Structures and parts of structures, nes, of iron o	2,441	2.2
63090000	Worn clothing and other worn articles	2,401	2.2
29280010	Organic derivatives of hydrazine or of hydroxyamine in bulk	2,374	2.1
Other Products		53,712	48.3
<b>% of Total May Imports</b>		<b>4.3</b>	
<b>Other Destination</b>		<b>720,725</b>	<b>27.6</b>
<b>Total Value of May Imports</b>		<b>2,615,136</b>	

Source: CSO, International Trade Statistics, 2011

Note: (\*) Provisional

## **Import Market Shares by Regional Groupings, May and April 2011**

The Southern African Development Community (SADC) regional grouping was the largest source of Zambia's imports accounting for 60.6 percent in May 2011. Within the SADC regional grouping, South Africa was the major source of Zambia's imports with 54.4 percent in May 2011 and 54.5 percent in April 2011. Congo (DR) was the second major source of Zambia's imports with 36.4 and 38.6 percent in May and April 2011, respectively. Other notable markets were Botswana, Zimbabwe and Tanzania.

The Common Market for Eastern and Southern Africa (COMESA) grouping of countries was the second largest source of Zambia's imports accounting for 25.3 percent in May 2011. Within COMESA, Congo (DR) was the main source of Zambia's imports in both May and April

2011 with 87.4 and 87.7 percent, respectively. Other notable sources were Zimbabwe, Kenya, Egypt and Malawi.

Asia was the third largest source of Zambia's imports accounting for 24.2 percent in May 2011. Within Asia, China was the dominant source of Zambia's imports in both May and April 2011 with 35.1 and 26.4 percent, respectively. Other notable markets were the United Arab Emirates, India, Kuwait and Japan.

The European Union (EU) was the fourth largest source of Zambia's imports accounting for 10.1 percent in May 2011. Within the EU, the United Kingdom was the major source of Zambia's imports accounting for 28.4 and 30.3 percent in May and April 2011, respectively. Other notable markets were Sweden, Finland, Ireland and Germany.

**Import Market shares by Major Regional Groupings, May\* and April 2011®, K' Millions**

GROUPING	May 2011*		GROUPING	April 2011®	
	Value (K' Million)	% Share		Value (K' Million)	% Share
<b>SADC</b>	<b>1,585,753</b>	<b>100.0</b>	<b>SADC</b>	<b>1,576,239</b>	<b>100.0</b>
South Africa	862,389	54.4	South Africa	858,977	54.5
Congo DR	577,489	36.4	Congo DR	607,752	38.6
Botswana	56,267	3.5	Botswana	38,774	2.5
Zimbabwe	40,932	2.6	Zimbabwe	29,255	1.9
Tanzania, United Republic	24,369	1.5	Tanzania, United Republic	23,042	1.5
Other SADC	24,308	1.5	Other SADC	18,439	1.2
<b>% of Total May Imports</b>	<b>60.6</b>		<b>% of Total April Imports</b>	<b>64.6</b>	
<b>COMESA</b>	<b>660,552</b>	<b>100.0</b>	<b>COMESA</b>	<b>692,737</b>	<b>100.0</b>
Congo DR	577,489	87.4	Congo DR	607,752	87.7
Zimbabwe	40,932	6.2	Kenya	40,199	5.8
Kenya	25,344	3.8	Zimbabwe	29,255	4.2
Egypt	9,438	1.4	Malawi	5,399	0.8
Malawi	3,291	0.5	Egypt	4,772	0.7
Other COMESA	4,058	0.6	Other COMESA	5,360	0.8
<b>% of Total May Imports</b>	<b>25.3</b>		<b>% of Total April Imports</b>	<b>28.4</b>	
<b>ASIA</b>	<b>633,138</b>	<b>100.0</b>	<b>ASIA</b>	<b>501,097</b>	<b>100.0</b>
China	222,482	35.1	China	132,411	26.4
United Arab Emirates	120,864	19.1	United Arab Emirates	106,519	21.3
India	111,187	17.6	India	85,349	17.0
Kuwait	58,173	9.2	Kuwait	55,375	11.1
Japan	42,122	6.7	Japan	49,460	9.9
Other ASIA	78,310	12.4	Other ASIA	71,982	14.4
<b>% of Total May Imports</b>	<b>24.2</b>		<b>% of Total April Imports</b>	<b>20.5</b>	

GROUPING	May 2011*		GROUPING	April 2011®	
	Value (K' Million)	% Share		Value (K' Million)	% Share
<b>EUROPEAN UNION</b>	<b>264,145</b>	<b>100.0</b>	<b>EUROPEAN UNION</b>	<b>211,511</b>	<b>100.0</b>
United Kingdom	74,974	28.4	United Kingdom	63,982	30.3
Sweden	45,384	17.2	Netherlands	31,630	15.0
Finland	42,353	16.0	Finland	27,430	13.0
Ireland	21,638	8.2	Sweden	22,314	10.5
Germany	18,351	6.9	Ireland	16,615	7.9
Other EU	61,444	23.3	Other EU	49,539	23.4
<b>% of Total May Imports</b>	<b>10.1</b>		<b>% of Total April Imports</b>	<b>8.7</b>	
<b>Total Value of May Imports</b>	<b>2,615,136</b>		<b>Total Value of April Imports</b>	<b>2,438,607</b>	

Source: CSO, International Trade Statistics, 2011

Note: (\*) Provisional  
(®) Revised figures

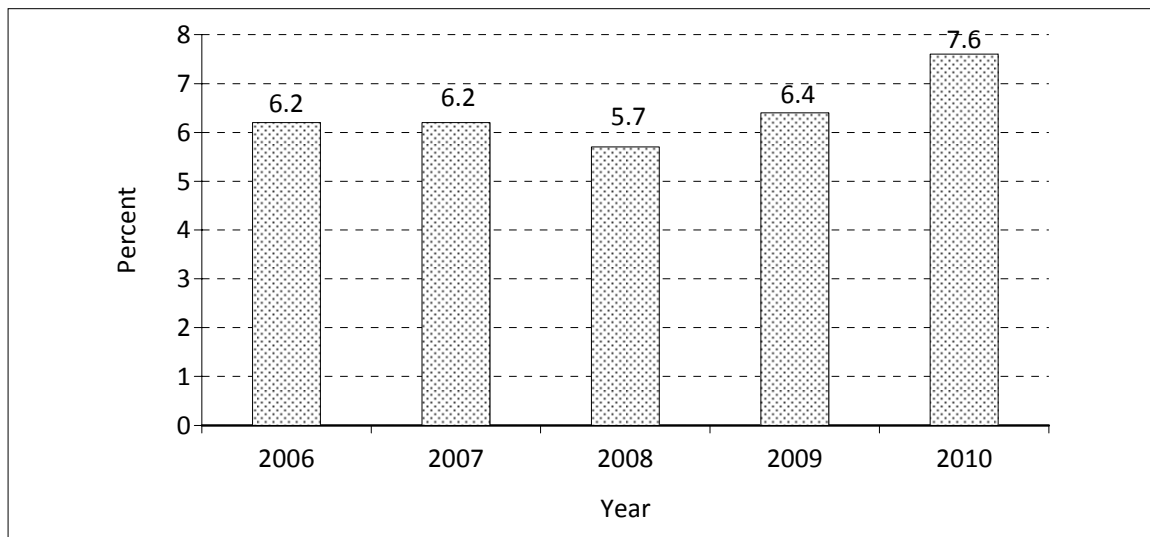
## GROSS DOMESTIC PRODUCT

### *Economic Growth in the FNDP Period*

According to the final estimates of Gross Domestic Product (GDP) for 2010, the Zambian economy grew by 7.6 percent in 2010 compared to a growth of 6.4 percent in 2009. This growth was driven by increased output in Mining and Quarrying; Transport and Communications; and Agriculture, Forestry and Fishing.

During the period of the Fifth National Development Plan (FNDP), Zambia's annual economic growth averaged 6.4 percent. This is slightly below the annual average target of 7 percent set out in the FNDP.

Percentage Changes in GDP at Constant 1994 Prices, 2006-2010



Source: CSO, National Accounts Statistics



## Percentage Changes in GDP by Kind of Economic Activity at Constant 1994 Prices

KIND OF ECONOMIC ACTIVITY	2006	2007	2008	2009	2010
<b>PRIMARY SECTOR</b>	4.1	1.7	2.5	12.4	10.2
Agriculture, Forestry and Fishing	2.2	0.4	2.6	7.2	6.6
Mining and Quarrying	7.3	3.6	2.5	20.3	15.2
<b>SECONDARY SECTOR</b>	9.8	10.0	4.7	6.2	6.5
Manufacturing	5.7	3.0	1.8	2.2	4.2
Electricity, Gas and Water	10.5	1.0	(1.2)	6.8	7.4
Construction	14.4	20.0	8.7	9.5	8.1
<b>TERTIARY SECTOR</b>	6.7	7.1	7.2	3.9	6.6
Wholesale and Retail Trade	2.0	2.4	2.7	2.3	4.3
Restaurants, Bars and Hotels	16.1	9.6	5.0	(13.4)	9.6
Transport, Storage and Communications	22.1	19.2	15.8	7.6	14.9
Financial Institutions and Insurance	4.0	4.1	8.7	5.2	6.0
Real Estate and Business services	3.2	3.1	3.0	2.8	3.0
Community, Social and Personal Services	9.0	12.5	11.7	8.6	5.3
Less: FISIM	2.5	2.5	2.5	3.3	2.3
<b>TOTAL GROSS VALUE ADDED</b>	7.0	6.7	5.7	6.4	7.6
Taxes less subsidies on Products	(3.1)	(0.3)	5.7	6.4	7.6
<b>TOTAL G.D.P. AT MARKET PRICES</b>	6.2	6.2	5.7	6.4	7.6

Source: CSO, National Accounts Statistics

Growth in the Primary Sector, which consists of the Agriculture, Forestry and Fishing industry as well as the Mining and Quarrying industry, grew from 4.1 percent in 2006 to 10.2 percent in 2010. The Mining and Quarrying industry was the main source of growth in this sector. The mining and quarrying industry grew by an annual average of 9.8 percent during 2006-2010. The sustained growth is mainly due to increased copper output.

The Agriculture, Forestry and Fishing industry grew by an annual average of 3.8 percent during 2006-2010, with strong growth in 2009 and 2010. This is due to higher crop output, which resulted in the recording of unprecedented maize output in the 2009/2010 agriculture season of 2.8 million metric tonnes.

The period average growth in the Secondary Sector, which consists of Manufacturing, Electricity and Water

Supply and Construction, was 7.4 percent. Construction was the main source of growth, averaging a growth of 12.1 percent in the period under review. This is mainly due to increased building and construction activities at corporate and household levels.

The Electricity and Water Supply and the Manufacturing industries grew by an average of 4.9 percent and 3.4 percent, respectively, during the period 2006-2010.

The Tertiary Sector grew by an annual average of 6.3 percent during the period 2006-2010. The Transport and Communications industry had the highest contribution to GDP which averaged 15.9 percent during the period 2006-2010. The strong growth is mainly due to the sustained growth in the Telecommunications sub-industry as well as the Road Transport sub-industry.

## Levels of Gross Domestic Product (GDP)

Zambia's current price GDP rose from K38,560.8 billion in 2006 to K77,666.6 billion in 2010. In US dollar terms, the economy grew from US\$ 10.7 billion in 2006 to

US\$16.2 billion in 2010. GDP per capita has also increased from US\$907.3 in 2006 to US\$1,241.0 in 2010.

	2006	2007	2008	2009	2010
GDP by kind of economic activity (K'billions)	38,560.8	46,194.8	54,839.4	64,615.6	77,666.6
GDP in US\$ Million	10,705.09	11,541.43	14,638.85	12,805.79	16,190.66
GDP per capita (Kwacha)	3,268,231	3,798,753	4,378,122	5,010,191	5,953,056
GDP per capita (US Dollars)	907.3	949.1	1,168.7	992.9	1,241.0

Source: CSO, National Accounts Statistics

## ***Structure of the Economy***

The GDP at current prices depicts the structure of the economy. The Services Sector accounted for 46.3 percent of the total GDP in the period 2006-2010. This was followed by the Secondary Sector which accounted for 28.6 percent of the total GDP. The Primary Sector accounted for 23.9 percent of the total GDP.

Within the Tertiary Sector, the Wholesale and Retail Trade industry accounted for the largest share, followed by the Community, Social and Personal Services, and the Financial Institutions and Insurance industry. The share of GDP in this sector declined slightly from 47.4 percent in 2006 to 45.5 percent in 2010. Within the Secondary Sector, Construction had the largest share,

followed by Manufacturing. Electricity and Water Supply had the lowest share of GDP in this sector. The share of GDP in the Secondary sector increased from 25.6 percent in 2006 to 31.8 percent in 2010.

Within the Primary Sector, Agriculture, Forestry and Fishing accounted for the larger share compared to Mining and Quarrying. The structure of the primary sector did not change much in the period under review.

With the increase in subsidies, especially to the agriculture sector, the share of Taxes less Subsidies on Products has reduced from 7.4 percent in 2006 to 3.9 percent in 2010.

**Percentage Share of GDP by Kind of Economic Activity, 2006-2010**

KIND OF ECONOMIC ACTIVITY	2006	2007	2008	2009	2010	Period Average
<b>PRIMARY SECTOR</b>	24.4	24.2	23.5	23.4	23.8	23.9
Agriculture, Forestry and Fishing	20.2	19.8	19.8	20.8	20.1	20.2
Mining and Quarrying	4.2	4.4	3.6	2.6	3.7	3.7
<b>SECONDARY SECTOR</b>	25.6	27.1	28.2	30.4	31.8	28.6
Manufacturing	10.4	9.7	9.4	9.3	8.7	9.5
Electricity, Gas and Water	3.0	2.9	2.8	2.8	2.8	2.9
Construction	12.2	14.5	16.1	18.3	20.2	16.3
<b>TERTIARY SECTOR</b>	47.4	46.3	46.3	45.9	45.5	46.3
Wholesale and Retail trade	16.9	16.0	15.6	15.3	14.4	15.7
Restaurants, Bars and Hotels	2.9	2.9	2.9	2.4	2.4	2.7
Transport, Storage and Communications	4.2	4.3	4.1	3.6	4.0	4.0
Financial Institutions and Insurance	8.4	7.9	8.0	8.6	8.7	8.3
Real Estate and Business services	6.0	5.8	5.7	5.7	5.5	5.7
Community, Social and Personal Services	9.0	9.4	10.0	10.3	10.5	9.8
Less: FISIM	(4.8)	(4.5)	(4.6)	(4.5)	(5.0)	(4.7)
<b>TOTAL GROSS VALUE ADDED</b>	92.6	93.1	93.4	95.2	96.1	94.1
Taxes less subsidies on Products	7.4	6.9	6.6	4.8	3.9	5.9
<b>TOTAL G.D.P. AT MARKET PRICES</b>	100.0	100.0	100.0	100.0	100.0	100.0

Source: CSO, National Accounts Statistics

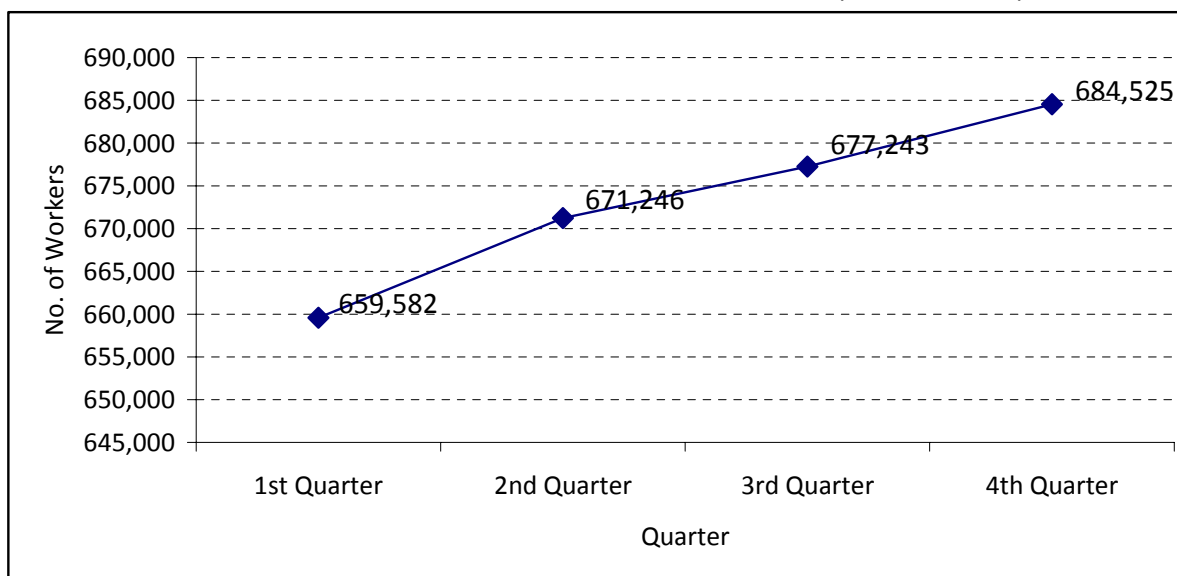
# LABOUR STATISTICS

## 2009 Formal Sector Employment

According to the 2009 Quarterly and Earnings Employment Inquiry Report, the total number of workers in the formal sector increased by 1.8 percent from 659,582 in the first quarter to 671,246 in

the second quarter. It continued to increase to 677,243 in the third quarter and to 684,525 in the fourth quarter, an increase of 0.9 and 1.1 percent, respectively.

Increase in the Number of Workers in the Formal Sector, 1<sup>st</sup> Qtr – 4Qtr, 2009



Source: CSO, Employment and Earnings Inquiry

## Formal Sector Employment by Sector

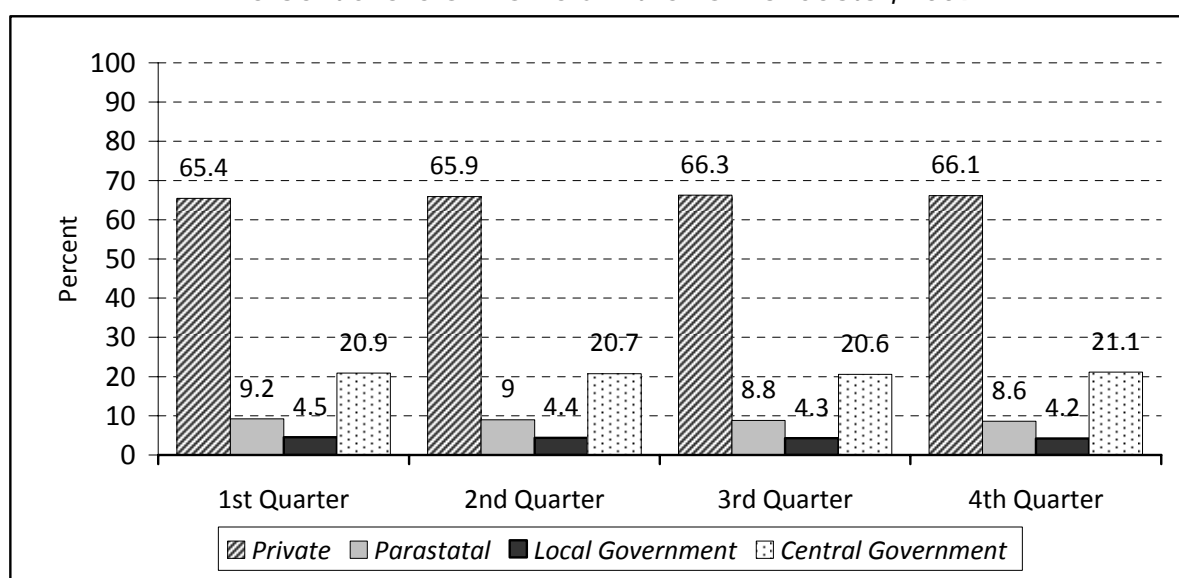
The results also show that the Private sector accounted for an average of 65.9 percent of workers in the formal sector in 2009. Between first quarter and second quarter, the number of workers increased by 2.5 percent from 431,575 to 442,378. It increased further to 449,057 workers in the third quarter and to 452,564 workers in the fourth quarter.

The Central Government accounted for an average of 20.8 percent of workers in the formal sector in 2009. This has shown an increase from the first to the fourth quarter. Between first quarter and second quarter, the number of workers increased by 0.8 percent from 138,092 workers to 139,234 workers. It increased

further to 139,691 workers in the third quarter and to 144,564 workers in the fourth quarter.

Local Government accounted for an average of 4.4 percent of workers in the formal sector. There was a reduction of 0.5 percent between the first and second quarter from 29,394 to 29,252 workers. Furthermore, a reduction of 1.4 percent was recorded between the second and third quarter from 29,252 to 28,831 workers. However, the number of workers increased by 0.1 percent from 28,831 workers to 28,861 workers between third quarter and fourth quarter.

## Percent Share of Workers in the Formal Sector, 2009



Source: CSO, *Employment and Earnings Inquiry*

## Percent Distribution of Formal Sector Employees by Sector, 2009

Institutional Sector	1st Quarter 2009		2nd Quarter 2009		3rd Quarter 2009		4th Quarter 2009		Percent Change		
	Number	Percent	Number	Percent	Number	Percent	Number	Percent	1st Qtr to 2nd Qtr	2nd Qtr to 3rd Qtr	3rd Qtr to 4th Qtr
Central Government	138,092	20.9	139,234	20.7	139,691	20.6	144,564	21.1	0.8	0.3	3.5
Local Government	29,394	4.5	29,252	4.4	28,831	4.3	28,861	4.2	-0.5	-1.4	0.1
Parastatal	60,521	9.2	60,382	9.0	59,664	8.8	58,536	8.6	-0.2	-1.2	-1.9
Private	431,575	65.4	442,378	65.9	449,057	66.3	452,564	66.1	2.5	1.5	0.8
<b>Total</b>	<b>659,582</b>	<b>100</b>	<b>671,246</b>	<b>100</b>	<b>677,243</b>	<b>100</b>	<b>684,525</b>	<b>100</b>	<b>1.8</b>	<b>0.9</b>	<b>1.1</b>

Source: CSO, *Employment and Earnings Inquiry*

The Parastatal or quasi-government institutions accounted for an average of 8.9 percent of workers in the formal sector. Over the year, the number of workers in the sector reduced from 60,521 in the first quarter to 58,536 workers in the fourth quarter. Between the first quarter

and second quarter, the number of workers decreased by 0.2 percent from 60,521 to 60,382 workers. Furthermore, there was a reduction of 1.2 percent between the second quarter and third quarter from 60,382 to 59,664 workers.

## ***Formal Sector Employment by Industry***

The Agriculture, forestry and fishing industry accounted for an average of 12.1 percent of the formal sector employment in 2009. Between first quarter and second quarter, Agriculture, forestry and fishing industry recorded a 5.2 percent increase in the number of workers from 76,901 to 80,906. In the third quarter, the number of workers increased by 2.6 percent from 80,906 in the second quarter to 82,980. At the close of 2009,

Agriculture, forestry and fishing industry had 84,033 workers, an increase of 1.3 percent from the third quarter.

Financial and insurance activities industry accounted for an average of about 4 percent of the formal sector employment. In the first quarter, it recorded 19,437 workers and increased to 23,518 workers in the second quarter. Between second and third quarter, the

number of workers in the industry increased by 10 percent from 23,518 workers in the second quarter to 25,862 workers in the third quarter. The industry

further experienced another increase of 4.8 percent between third and fourth quarter.

**Percent Distribution of Formal Sector Employees by Industry, 2009**

Industry	1st Quarter 2009		2nd Quarter 2009		3rd Quarter 2009		4th Quarter 2009		Percent Change		
	Number	Percent share	Number	Percent share	Number	Percent share	Number	Percent share	1st Qtr to 2nd Qtr	2nd Qtr to 3rd Qtr	3rd Qtr to 4th Qtr
Agriculture, Forestry & Fishing	76,901	11.7	80,906	12.1	82,980	12.3	84,033	12.3	5.2	2.6	1.3
Mining & Quarrying	51,486	7.8	55,165	8.2	57,096	8.4	58,084	8.5	7.1	3.5	1.7
Manufacturing	68,766	10.4	70,189	10.5	70,909	10.5	71,271	10.4	2.1	1.0	0.5
Electricity, Gas & Water	13,357	2.0	12,332	1.8	11,851	1.7	11,618	1.7	-7.7	-3.9	-2.0
Construction	10,654	1.6	12,871	1.9	14,143	2.1	14,823	2.2	20.8	9.9	4.8
Wholesale & Retail Trade	101,823	15.4	101,204	15.1	100,897	14.9	100,744	14.7	-0.6	-0.3	-0.2
Transportation & Storage	30,661	4.6	26,885	4	25,180	3.7	24,371	3.6	-12.3	-6.3	-3.2
Financial & Insurance Activities	19,437	2.9	23,518	3.5	25,862	3.8	27,116	4.0	21.0	10.0	4.8
Community, Social & Personal Services	286,497	43.4	288,176	42.9	288,326	42.6	292,465	42.7	0.6	0.1	1.4
<b>Total</b>	<b>659,582</b>	<b>100</b>	<b>671,246</b>	<b>100</b>	<b>677,243</b>	<b>100</b>	<b>684,525</b>	<b>100</b>	<b>1.8</b>	<b>0.9</b>	<b>1.1</b>

Source: CSO, *Employment and Earnings Inquiry*

Community, Social and Personal Services Industry accounted for an average of 43 percent of the formal sector employment. The number of workers increased by 0.6 percent, from 286,497 workers in the first quarter to 288,176

workers in the second quarter. Between third and fourth quarters, the number increased by 1.4 percent from 288,326 workers in the third quarter to 292,465 workers in the fourth quarter.

## 2010 Census of Population and Housing

### *Update on the 2010 Census of Population and Housing!*

Zambia successfully undertook the 2010 Census of Population and Housing. The data collection exercise commenced mid October 2010 and came to an end mid November 2010. Immediately after data collection, CSO embarked on the task of processing the census preliminary figures whose results were disseminated in February this year. The Census preliminary report is available on the CSO website as well as in hard copy format obtainable from the CSO offices. The preliminary report was summarized from the summary count data compiled from the Census questionnaires immediately after the census data collection in the field. The data capture for the summary count was done in the Districts.

For the 2010 census data capture from the questionnaires, CSO is using the combined Intelligent Character Recognition (ICR) and Optical Character Recognition (OCR) scanning technology in its data capturing process. The main aim of employing this technology is to cut down on the time spent on capturing data using computers.

*The complete suite of the data capturing system was obtained from a United Kingdom (UK) firm called Data Research Services (DRS) with the support of the UK Department of International Development (DFID). The data capturing process commenced on 30<sup>th</sup> March 2011 and is expected to be completed by mid August 2011.*

*The data capturing process involves the scanning of census questionnaires as well as character correction, the process that ensures that all the captured characters are correctly recognized by the system. So far, data for five (5) provinces out of the nine (9) provinces of Zambia has been successfully captured and currently data for the sixth province is being captured.*

*Alongside the data capturing process, a team of CSO Information Technology (IT) staff and various Subject Matter Specialists, managed to develop a draft edit and imputation specifications document. This task was accomplished with the technical assistance offered by the United States (U.S) Census Bureau. This document was produced using data for the provinces that have been completely captured. The final edit and imputation specification document is scheduled to be finalized after all the data has been captured. CSO expects to have the final population figures of the 2010 Census using clean census dataset by December 2011.*

# SELECTED SOCIO-ECONOMIC INDICATORS

## PROJECTED MID-YEAR POPULATION 2000-2010

	2000	2001	2002	2003	2004	2005	2006	2007	2008	2009	2010*
<i>Total Population</i>	9,885,591	10,089,492	10,409,441	10,744,380	11,089,691	11,441,461	11,798,678	12,160,516	12,525,791	12,896,830	13,046,508
<i>Population Growth Rate</i>	2.5	3.1	3.1	3.1	3.1	3.1	3	3	2.9	2.9	2.8
<i>Life Expectancy at Birth</i>	50	51.8	51.9	52.4	52.4	52.6	51.9	51.4	51.3	51.2	51.3
POPULATION BY PROVINCE											
<i>Central</i>	1,012,257	1,032,574	1,066,992	1,103,387	1,141,256	1,180,124	1,219,980	1,260,491	1,301,776	1,343,835	1,267,803
<i>Copperbelt</i>	1,581,221	1,611,569	1,662,155	1,714,225	1,767,165	1,820,443	1,874,081	1,927,576	1,980,824	2,034,012	1,958,623
<i>Eastern</i>	1,306,173	1,348,070	1,391,690	1,436,120	1,482,290	1,530,118	1,579,960	1,631,890	1,684,910	1,740,180	1,707,731
<i>Luapula</i>	775,353	791,067	817,326	845,076	873,969	903,746	934,317	965,605	997,579	1,030,572	958,976
<i>Lusaka</i>	1,391,329	1,413,010	1,453,690	1,495,730	1,538,000	1,579,769	1,620,730	1,660,070	1,697,730	1,733,830	2,198,996
<i>Northern</i>	1,258,696	1,277,250	1,315,650	1,357,540	1,401,340	1,445,730	1,490,330	1,534,170	1,577,310	1,619,980	1,759,600
<i>North-western</i>	583,350	596,010	616,496	638,004	660,322	683,367	707,074	731,351	756,261	781,800	706,462
<i>Southern</i>	1,212,124	1,235,134	1,275,470	1,318,161	1,362,382	1,407,433	1,453,324	1,499,462	1,545,880	1,592,864	1,606,793
<i>Western</i>	765,088	774,929	795,247	816,983	839,757	863,294	887,540	912,226	937,419	963,107	881,524

**Source:** CSO, Population Projections Report

**Note:** 2000 figures are from the 2000 Census of Population and Housing while the 2001 to 2009 figures are Population Projections from the Projections Report. The 2010 figures are from 2010 Census of Population and Housing Preliminary Report.

**QUARTERLY INDEX OF INDUSTRIAL PRODUCTION – ZAMBIA**

PERIOD	TOTAL INDEX	MINING				MANUFACTURING									TOTAL ELECTRICITY
		TOTAL MINING	Coal	Non-ferrous Ore	Stone Quarrying	TOTAL MANUFACTURING	Food, Beverages & Tobacco	Textile, Clothing & Leather	Wood & Wood Products	Paper & Paper Products	Chemicals, Rubbers & Plastics	Non-metallic Mineral Products	Basic Metal Industries	Fabricated Metal Products	
WEIGHT	1.000	0.350	0.005	0.242	0.103	0.511	0.235	0.060	0.006	0.017	0.059	0.025	0.009	0.100	0.139
2008 Q1	159.0	243.1	7.4	227.8	289.4	113.5	131.9	54.8	205.3	107.4	134.2	125.4	80.2	88.8	114.6
2008 Q2	158.1	219.5	0.1	197.0	281.9	125.3	169.0	37.3	216.8	123.1	98.2	152.7	86.6	82.5	124.1
2008 Q3	163.5	217.9	0.0	196.2	278.3	137.8	189.5	21.7	159.5	88.4	95.0	155.1	84.8	118.3	121.8
2008 Q4	164.0	209.8	0.0	196.8	249.6	142.5	196.2	48.5	167.2	135.2	77.6	164.2	68.9	112.0	127.8
<b>2008</b>	<b>161.2</b>	<b>222.5</b>	<b>1.9</b>	<b>204.4</b>	<b>274.8</b>	<b>129.8</b>	<b>171.6</b>	<b>40.6</b>	<b>187.2</b>	<b>113.5</b>	<b>101.3</b>	<b>149.3</b>	<b>80.1</b>	<b>100.4</b>	<b>122.1</b>
2009 Q1	169.0	266.3	0.0	251.4	312.8	111.6	136.9	45.5	219.4	112.5	137.1	136.7	82.1	66.5	134.9
2009 Q2	169.8	247.3	83.1	229.0	297.3	127.0	177.2	29.2	230.3	132.1	98.9	166.6	84.9	70.6	132.8
2009 Q3	170.7	232.3	48.6	208.3	296.6	138.8	196.7	15.2	162.2	96.7	85.9	178.8	76.9	109.0	133.0
2009 Q4	174.4	228.2	0.0	208.0	285.9	150.0	210.5	40.1	156.2	138.0	80.8	182.9	61.0	116.0	128.7
<b>2009</b>	<b>171.0</b>	<b>243.5</b>	<b>32.9</b>	<b>224.2</b>	<b>298.1</b>	<b>131.8</b>	<b>180.3</b>	<b>32.5</b>	<b>192.1</b>	<b>119.8</b>	<b>100.7</b>	<b>166.2</b>	<b>76.2</b>	<b>90.5</b>	<b>132.4</b>
2010 Q1	180.2	287.0	0.0	272.7	333.4	117.3	146.0	27.2	248.2	136.4	136.8	150.8	80.3	75.8	142.4
2010 Q2	186.9	273.4	0.0	261.7	312.9	138.6	193.6	23.3	261.2	171.5	99.0	189.8	84.8	80.6	147.2
*2010 Q3	188.9	272.4	0.0	261.9	308.9	144.4	202.9	4.1	177.9	105.4	87.1	199.6	78.4	121.4	142.5
YEAR-ON-YEAR PERCENTAGE CHANGES															
2008 Q1	8.5	17.5	(12.8)	15.8	20.7	3.3	2.2	(10.2)	16.4	16.3	15.2	6.5	24.3	(2.4)	(11.5)
2008 Q2	3.2	3.8	(99.0)	(1.7)	14.4	3.7	4.2	(12.1)	26.4	32.8	2.9	3.0	41.8	(3.5)	(0.8)
2008 Q3	5.5	8.7	(99.8)	(6.7)	49.5	3.0	6.3	(34.4)	(3.1)	27.6	(1.2)	1.1	26.2	(2.5)	2.0
2008 Q4	2.8	7.1	(99.9)	2.8	16.4	(0.9)	(0.5)	(35.8)	7.7	39.5	7.8	9.7	1.6	(1.8)	1.3
<b>2008</b>	<b>4.9</b>	<b>9.3</b>	<b>(77.4)</b>	<b>2.4</b>	<b>23.9</b>	<b>2.2</b>	<b>3.0</b>	<b>(23.5)</b>	<b>12.1</b>	<b>29.3</b>	<b>6.6</b>	<b>5.0</b>	<b>23.0</b>	<b>(2.5)</b>	<b>(2.4)</b>
2009 Q1	6.3	9.5	(99.9)	10.4	8.1	(1.7)	3.8	(17.0)	6.9	4.7	2.1	9.0	2.3	(25.1)	17.7
2009 Q2	7.5	12.7	82990.9	16.2	5.5	1.3	4.8	(21.7)	6.2	7.3	0.6	9.1	(1.9)	(14.4)	7.0
2009 Q3	4.3	6.6	441336.4	6.2	6.6	0.7	3.8	(29.8)	1.7	9.4	(9.6)	15.3	(9.2)	(7.8)	9.1
2009 Q4	6.3	8.8	0.0	5.7	14.6	5.3	7.3	(17.5)	(6.6)	2.1	4.1	11.4	(11.4)	3.6	0.6
<b>2009</b>	<b>6.1</b>	<b>9.4</b>	<b>1648.9</b>	<b>9.7</b>	<b>8.5</b>	<b>1.6</b>	<b>5.0</b>	<b>(19.9)</b>	<b>2.6</b>	<b>5.6</b>	<b>(0.6)</b>	<b>11.3</b>	<b>(4.8)</b>	<b>(9.8)</b>	<b>8.4</b>
2010 Q1	6.6	7.8	(100.0)	8.5	6.6	5.1	6.6	(40.2)	13.1	21.2	(0.2)	10.3	(2.1)	14.1	5.6
2010 Q2	10.1	10.6	(100.0)	14.2	5.3	9.2	9.2	(20.1)	13.4	29.8	0.1	14.0	(0.2)	14.2	10.8
*2010 Q3	10.7	6.1	(100.0)	25.7	4.2	4.1	3.2	(72.9)	9.7	9.0	1.3	11.6	1.8	11.3	7.2

Source: CSO, IIP Statistics



PRELIMINARY POPULATION DISTRIBUTION BY DISTRICT AND RESIDENCE, ZAMBIA 2010			
District	RURAL TOTAL	URBAN TOTAL	DISTRICT TOTAL
Chibombo	291,288	2,477	293,765
Kabwe	.	202,914	202,914
Kapiri-Mposhi	197,754	43,087	240,841
Mkushi	132,162	19,641	151,803
Mumbwa	196,081	22,247	218,328
Serenje	142,652	17,500	160,152
<b>CENTRAL PROVINCE TOTAL</b>	<b>959,937</b>	<b>307,866</b>	<b>1,267,803</b>
Chililabombwe	14,783	75,747	90,530
Chingola	30,415	179,658	210,073
Kalulushi	23,104	73,102	96,206
Kitwe	17,896	504,196	522,092
Luanshya	23,345	129,772	153,117
Lufwanyama	75,542	.	75,542
Masaiti	102,503	.	102,503
Mpongwe	91,765	.	91,765
Mufulira	11,285	150,316	161,601
Ndola	.	455,194	455,194
<b>COPPERBELT PROVINCE TOTAL</b>	<b>390,638</b>	<b>1,567,985</b>	<b>1,958,623</b>
Chadiza	101,505	2,750	104,255
Chama	93,761	7,651	101,412
Chipata	339,257	113,171	452,428
Katete	227,596	13,222	240,818
Lundazi	298,264	16,017	314,281
Mambwe	71,074	.	71,074
Nyimba	77,643	8,041	85,684
Petauke	311,746	26,033	337,779
<b>EASTERN PROVINCE TOTAL</b>	<b>1,520,846</b>	<b>186,885</b>	<b>1,707,731</b>
Chiengi	109,147	.	109,147
Kawambwa	100,420	30,260	130,680
Mansa	143,465	74,138	217,603
Milenge	43,649	.	43,649
Mwense	98,292	19,698	117,990
Nchelenge	113,004	34,923	147,927
Samfya	171,662	20,318	191,980
<b>LUAPULA PROVINCE TOTAL</b>	<b>779,639</b>	<b>179,337</b>	<b>958,976</b>
Chongwe	175,418	12,551	187,969
Kafue	134,641	108,113	242,754
Luangwa	20,082	5,212	25,294
Lusaka	.	1,742,979	1,742,979
<b>LUSAKA PROVINCE TOTAL</b>	<b>330,141</b>	<b>1,868,855</b>	<b>2,198,996</b>
Chilubi	76,911	.	76,911
Chinsali	130,726	17,119	147,845
Isoka	146,782	17,628	164,410
Kaputa	104,444	9,041	113,485
Kasama	124,256	113,779	238,035
Luwingu	120,229	14,197	134,426
Mbala	188,143	25,111	213,254
Mpika	171,788	39,637	211,425
Mporokoso	85,054	15,879	100,933
Mpulungu	70,274	26,048	96,322
Mungwi	137,876	6,661	144,537
Nakonde	76,634	41,383	118,017
<b>NORTHERN PROVINCE TOTAL</b>	<b>1,433,117</b>	<b>326,483</b>	<b>1,759,600</b>

PRELIMINARY POPULATION DISTRIBUTION BY DISTRICT AND RESIDENCE, ZAMBIA 2010			
District	RURAL TOTAL	URBAN TOTAL	DISTRICT TOTAL
Chavuma	33,893	.	33,893
Kabompo	69,279	21,881	91,160
Kasempa	64,557	1,173	65,730
Mufumbwe	55,099	.	55,099
Mwinilunga	117,078	15,610	132,688
Solwezi	152,119	86,932	239,051
Zambezi	78,632	10,209	88,841
<b>NORTH-WESTERN PROVINCE TOTAL</b>	<b>570,657</b>	<b>135,805</b>	<b>706,462</b>
Choma	186,793	57,387	244,180
Gwembe	51,290	1,421	52,711
Itezhi-tezhi	52,391	12,202	64,593
Kalomo	235,401	18,810	254,211
Kazungula	98,292	.	98,292
Livingstone	5,137	136,897	142,034
Mazabuka	178,962	82,306	261,268
Monze	155,045	40,876	195,921
Namwala	94,931	6,658	101,589
Siavonga	64,514	25,273	89,787
Sinazongwe	92,389	9,818	102,207
<b>SOUTHERN PROVINCE TOTAL</b>	<b>1,215,145</b>	<b>391,648</b>	<b>1,606,793</b>
Kalabo	132,298	670	132,968
Kaoma	162,347	16,979	179,326
Lukulu	73,242	10,660	83,902
Mongu	128,905	49,549	178,454
Senanga	113,395	13,579	126,974
Sesheke	82,679	11,933	94,612
Shang'ombo	85,288	.	85,288
<b>WESTERN PROVINCE TOTAL</b>	<b>778,154</b>	<b>103,370</b>	<b>881,524</b>
<b>ZAMBIA TOTAL</b>			<b>13,046,508</b>

SOURCE: CSO, 2010 Census of Population and Housing Preliminary Results

#### INFLATION TRENDS 2000-2009

Year	Year on Year Inflation
1990	110.6
1991	99.7
1992	180.7
1993	128.1
1994	38.3
1995	46.0
1996	35.2
1997	18.6
1998	30.6
1999	20.6
2000	30.1
2001	18.7
2002	26.7
2003	17.2
2004	17.5
2005	15.9
2006	8.2
2007	8.9
2008	16.6
2009	9.9
2010	7.9

Source: CSO, Prices Statistics

## Interest Rates

End of Period	COMMERCIAL BANKS		CENTRAL BANK	TREASURY BILLS
	Weighted Lending Rates	Lending Rates	Interest Rates	YIELD RATE 91 DAYS
1990	-	-	34.0	-
1991	-	-	47.0	-
1992	-	-	54.0	-
1993	-	-	72.0	-
1994	36.2	-	25.4	-
1995	47.7	-	51.5	-
1996	57.4	69.0	70.0	-
1997	37.9	49.3	23.3	-
1998	37.4	37.0	43.4	-
1999	42.6	40.4	46.2	-
2000	37.6	45.9	44.1	-
2001	46.7	54.6	52.5	-
2002	42.5	50.0	34.0	-
2003	38.0	45.3	21.3	-
2004 MAR	31.8	39.1	9.6	-
Jun	29.8	36.9	7.8	-
Sep	30.0	37.4	14.7	-
Dec	29.8	37.1	18.3	-
2005 JAN	28.0	35.3	18.4	-
Feb	28.6	35.9	18.8	-
Mar	28.1	35.4	18.2	-
Apr	28.0	35.1	17.8	-
May	28.1	35.1	16.0	-
Jun	28.6	35.6	15.9	-
Jul	28.2	35.2	16.5	-
Aug	28.3	35.3	16.4	-
Sep	28.2	34.9	16.9	-
Oct	28.2	34.5	16.9	-
Nov	28.2	34.5	17.4	-
Dec	27.6	33.9	17.1	-
2006 JAN	26.7	33.0	17.1	15.1
Feb	26.4	32.7	16.1	14.1
Mar	25.4	31.6	14.7	12.7
Apr	25.2	31.4	11.0	9.0
May	22.8	29.0	8.4	6.4
Jun	21.6	27.8	7.5	5.5
Jul	21.7	27.9	8.6	6.6
Aug	21.7	27.9	9.6	7.6
Sep	21.6	27.8	10.9	8.6
Oct	21.6	27.8	12.3	10.3
Nov	21.6	27.8	11.1	9.1
Dec	21.6	27.9	10.7	8.7
2007 JAN	21.0	27.3	11.1	9.1
Feb	21.0	27.3	11.8	9.8
Mar	20.3	26.4	12.8	10.8
Apr	18.2	24.3	14.0	12.0
May	18.2	24.3	13.2	11.2
Jun	18.2	24.3	12.9	10.9
Jul	18.2	24.3	13.6	11.6
Aug	18.2	24.3	13.4	11.4
Sep	18.2	24.3	14.0	12.0
Oct	18.2	24.3	13.5	11.5
Nov	18.2	24.3	12.8	10.8
Dec	18.3	24.4	13.5	11.5
2008 JAN	18.4	24.5	13.2	11.2
Feb	18.3	24.4	12.6	10.6
Mar	18.2	24.3	12.9	10.9
Apr	18.2	24.3	13.0	11.0
May	18.2	24.3	14.1	12.1
Jun	18.5	24.6	14.1	12.1
Jul	18.6	24.7	14.1	12.1
Aug	18.6	24.7	14.3	12.3
Sep	19.6	25.7	14.5	12.5

End of Period	COMMERCIAL BANKS		CENTRAL BANK	TREASURY BILLS
	Weighted Lending Rates	Lending Rates	Interest Rates	YIELD RATE 91 DAYS
Oct	20.6	26.7	15.3	13.3
Nov	20.6	26.7	12.0	13.9
Dec	20.8	26.9	15.9	13.9
<b>2009</b>				
JAN	20.9	27.0	15.8	13.8
Feb	20.9	27.0	16.3	14.3
Mar	20.9	27.0	16.0	14.0
Apr	20.7	26.6	16.2	14.2
May	21.6	27.8	15.9	13.9
Jun	22.4	28.9	15.6	13.6
Jul	22.4	28.9	17.1	15.1
Aug	23.0	29.5	18.1	16.1
Sep	23.1	29.6	17.5	15.5
Oct	23.1	29.6	16.6	14.6
Nov				
Dec				

Source: Bank of Zambia

#### ZAMBIA'S ANNUAL TOTAL EXPORTS IN ABSOLUTE ZAMBIAN KWACHA AND U S DOLLAR 2000-2010

Flow Year	Total Exports	
	ZMK	USD
2000:	2,716,557,648,136	869,485,416
2001:	3,537,206,913,419	978,788,277
2002:	4,069,916,925,012	944,356,533
2003:	4,642,039,643,203	979,298,782
2004:	7,526,280,115,612	1,577,240,766
2005:	9,612,909,460,871	2,176,641,598
2006:	13,410,945,234,225	3,681,524,702
2007:	18,399,133,746,013	4,617,454,325
2008:	18,653,009,286,684	5,098,688,004
2009:	21,364,760,204,454	4,312,054,540
2010:	34,496,762,223,192	7,200,267,056
<b>Total:</b>	<b>138,429,521,400,821</b>	<b>32,435,799,999</b>

NOTE: 2000-2007 FIGURES ARE UNDER SPECIAL TRADE SYSTEM WHILE 2008 TO 2010 FIGURES ARE UNDER GENERAL TRADE SYSTEM

Source: CSO, International Trade Statistics, 2010

#### ZAMBIA'S ANNUAL IMPORTS IN ABSOLUTE ZAMBIAN KWACHA AND U S DOLLAR 2000-2010

Flow Year	IMPORT	
	ZMK	USD
2000:	2,751,563,199,592	871,386,492
2001:	3,900,496,869,495	1,079,955,769
2002:	4,732,881,915,324	1,103,070,912
2003:	7,439,867,256,553	1,573,309,968
2004:	10,279,302,826,391	2,150,649,040
2005:	11,466,668,652,907	2,579,688,391
2006:	11,049,770,813,126	3,023,996,472
2007:	15,945,289,847,742	4,006,980,387
2008:	18,476,489,239,723	5,060,482,666
2009:	18,941,137,478,672	3,792,642,675
2010:	25,507,270,190,029	5,320,961,454
<b>Total:</b>	<b>130,490,738,289,554</b>	<b>30,563,124,226</b>

NOTE: 2000-2007 FIGURES ARE UNDER SPECIAL TRADE SYSTEM WHILE 2008 TO 2010 FIGURES ARE UNDER GENERAL TRADE SYSTEM

Source: CSO, International Trade Statistics, 2010

## LAY MAN and STATISTICS

### 1. Special Trade System

The special trade type records flows of goods as trade statistics only when they are cleared into or from the free circulation area.

### 2. General Trade System

The general trade type records flows of goods as trade statistics when they cross the boundary of the customs territory.

**Kindly pass through our Stand at the 2011  
Zambia International Trade Fair and Collect a copy of the Statistician**

# THE STATISTICIAN



## Mission Statement

"To coordinate and Provide timely, quality and credible official statistics for use by Stakeholders and clients for Sustainable Development"

Volume One **Serving Your Data Needs** 2011

## Zambia's Population increases to 13,046,508

### Foreword



*John Kalumbi*

ACTING DIRECTOR  
OF CENSUS AND STATISTICS

The Central Statistical Office (CSO) is a department under the Ministry of Finance and National Planning (MoFNP). According to the Census and Statistics Act of the Laws of Zambia, CSO's mandate is to collect and analyse official data on economic and social indicators that are disseminated on a timely basis.

The Central Statistical Office has four Divisions namely; Economic and Financial Statistics; Agriculture and Environment Statistics; Social Statistics and Information, Research and Dissemination. Each division is headed/managed by a Deputy Director.

The Central Statistical Office (CSO) through its Information, Research and Dissemination (IR&D) Division, in its attempt to provide highlights of CSO's

work, has produced the first edition of "THE STATISTICIAN". This publication has not only laboured to provide user-friendly data but has also given an insight into the operations of the Department.

Through this publication, our data users will gain access to a variety of statistical data on Socio-economic indicators. Some of the relevant information to be found in this publication will include statistics on Agriculture, Gender, Demography, Inflation rates, External trade, National accounts, just to mention a few.

It is our wish that through this publication, media institutions, policy makers, the donor community, Non Governmental Organizations (NGO)'s, researchers, academicians and the general public will make use of this data and information for sustainable national development.

I would like to urge our readers and users of statistical information to send us any comments that may enhance statistical production and contribute to the improvement of this Newsletter.

The preliminary population count from the 2010 Census of Population and Housing for Zambia is 13,046,508 as at October 2010. Of the 13,046,508 persons, 6,394,455 were males while 6,652,053 were females

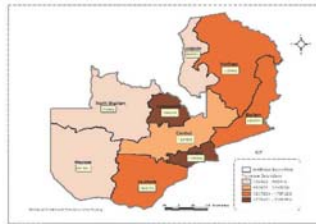
The regional distribution of the population shows that 7,978,274 people (61 percent) resided in rural areas

and 5,068,234 (39 percent) resided in the urban areas.

At provincial level, Lusaka had the largest population with 2,198,996, followed by Copperbelt with 1,958,623, Northern with 1,759,600, Eastern with 1,707,731 and Southern with 1,606,793.

The province with the least population was North-western with 706,462.

#### Population Distribution by Province, Zambia, 2010



#### Annual Rate of Population Growth

The average annual population growth rate for Zambia during the inter-censal periods 1990 - 2000 and 2000 - 2010 shows that Zambia's population grew at an average annual rate of 2.8 percent in the 2000 - 2010 inter-censal period compared to a growth of 2.4 percent in the 1990 - 2000 period.

At provincial level, Lusaka had the highest annual population growth rate in the period 2000 - 2010 at 4.7 percent followed by Northern (3.4 percent) and Southern (2.9 percent). Western Province had the lowest annual population growth rate in the same period of 1.4 percent.

#### Population Density

Population Density is herein defined as the total number of people per square kilometre. The Population Density of Zambia increased from 7.5 in 1980 to 9.8 in 1990 to 13.1 in 2000 and now stands at 17.3 persons per square kilometre.

The most densely populated province in Zambia is Lusaka whose density increased from 31.6 in 1980 to 45.1 in 1990 to 63.5 in 2000 and 100.4 persons per square kilometre in 2010. The second most densely populated province is Copperbelt

with a density of 62.5 persons per square kilometre. In the 1980 and 1990 Censuses, the density of Copperbelt Province was higher than that of Lusaka Province. North-western Province had the least density of 5.6 persons per square kilometre in 2010

Overall, the Population Density for Zambia increased from 13.1 persons per square kilometre in 2000 to 17.3 in 2010 (Details from 2010 Census Preliminary Report available at CSO).

### Contents

#### Social Statistics

- 2010 Preliminary Census Highlights
- Post Enumeration Survey
- Population and Demography Unit

#### Economic Statistics

- Consumer Price Index (CPI)
- Appreciating Statistics in International Trade of Goods
- Understanding Gross Domestic Product (GDP)

#### Agriculture Statistics

- Crop Forecast Survey
- National Food Balance Sheet for Zambia

#### Information, Research and Dissemination

- National Data Archives (NADA)
- Gender Equality: A requirement for attaining the Millennium Development Goals.
- 2010 Census Data Capturing

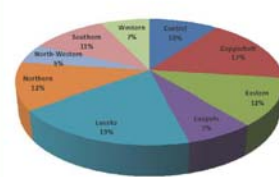
### Electoral Information

In Zambia, the voting age is 18 years and above. Any person who is aged 18 years and above is therefore eligible to vote in any Presidential, Parliamentary and local government elections.

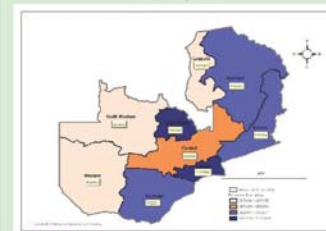
#### Number of Eligible Voters

The total number of eligible voters from the 2010 Census was 6,069,753 representing 47 percent of the total population of Zambia.

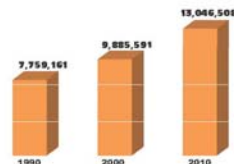
Percent Share of Eligible Voters by Province, 2010



Number of Eligible Voters by Province, Zambia, 2010



### ZAMBIA'S POPULATION



## ***Surveys/Activities being undertaken***

- ☞ 2010 Census of Population and Housing Data Processing
- ☞ 2010 Living Conditions Monitoring Survey VI Data Analysis and Report Writing
- ☞ 2011 Crop Forecasting Survey data analysis
- ☞ Sample Vital Registration with Verbal Autopsy (SAVVY)
- ☞ Formal Sector Quarterly Employment and Earnings Inquiry, 1<sup>st</sup> and 2<sup>nd</sup> Quarter 2010

## ***Available***

- ☞ 2009/2010 Crop Forecasting Survey
- ☞ 2009 Zambia Sexual Behaviour Survey (ZSBS)
- ☞ Employment and Earnings Inquiry Report, January 2006
- ☞ National Accounts Statistics Bulletin No.9 2005
- ☞ Labour-Force Survey Report, 2005
- ☞ 2007 Zambia Demographic and Health Survey (ZDHS)
- ☞ 2010 Census of population and Housing Preliminary Report (both Hard and soft copy)

---

Subscribe for your free electronic copy of “The Monthly” online at [www.zamstats.gov.zm](http://www.zamstats.gov.zm)

---

*The Editorial Team would like to thank all Media Institutions and Users of.....*

# **“The Monthly Bulletin”**

Thank you for supporting us

## ***Secretariat***

<i>John Kalumbi</i>	<i>- Acting Director</i>
<i>Peter Mukuka</i>	<i>- Deputy Director</i>
<i>Mate Mate</i>	<i>- Principal Research Officer</i>
<i>Linda N. Chonya</i>	<i>- Senior Research Officer</i>
<i>Etambuyu Lukonga</i>	<i>- Documentalist</i>
<i>Anthony Nkole</i>	<i>- Desktop Publishing Officer</i>
<i>Perry Musenge</i>	<i>- Assistant Desktop Publishing Officer</i>
<i>Petronella Kaputu</i>	<i>- Press Liaison Officer</i>
<i>Chisuwa S. Nalishuwa</i>	<i>- Assistant Field Co-ordinator</i>
<i>Cecilia M. Munjita</i>	<i>- Librarian</i>
<i>Humphrey Zimba</i>	<i>- Dissemination Officer</i>

## ***Editorial Team***

<i>John Kalumbi</i>	<i>- Acting Director</i>
<i>Peter Mukuka</i>	<i>- Deputy Director (IRD)</i>
<i>Modesto Banda</i>	<i>- Deputy Director (AG)</i>
<i>William Mayaka</i>	<i>- Deputy Director (SOC)</i>
<i>Goodson Sinyenga</i>	<i>- Deputy Director (ECON)</i>
<i>Shebo Nalishobo</i>	<i>- Statistician</i>
<i>Josephine C. Banda</i>	<i>- Statistician</i>
<i>Gerson Banda</i>	<i>- Statistician</i>
<i>Palver Sikanyiti</i>	<i>- Statistician</i>
<i>Lubinda Mukata</i>	<i>- Statistician</i>