



Republic of Zambia

# The Monthly

## Central Statistical Office

Volume 86

Website: [www.zamstats.gov.zm](http://www.zamstats.gov.zm)

May, 2010

### Foreword

Welcome to the Monthly presentation organised by the Dissemination Branch of the Central Statistical Office (CSO). The CSO embarks on vigorous information delivery strategy to major stakeholders and the media institutions in order to increase utilisation of statistical products and services. The office produces a number of statistical products in the Economic, Social, Agricultural and Environmental areas. The information collected in these areas may be used for various purposes including policy formulation, planning, implementation, monitoring and evaluation of programmes and projects.

This Monthly publication is an attempt to provide highlights of CSO's work and how it can help media institutions and the general public to make use of data and information for sustainable national development and decision-making.

I would like to urge our readers and users of statistical information to send to us any comments that may enhance statistical production and contribute to the improvement of this bulletin.

Ms. Efreda Chulu  
Director of Census and Statistics

27<sup>th</sup> May, 2010

### Census Publicity

ZAMBIA CENSUS 2010



#### Inside this Issue

- **Zambia Expected to Produce Highest Quantity of Maize ever!**
- **Inflation declines to 9.1 percent in May 2010**
- **April 2010 records Trade Surplus**
- **HIV testing has tremendously increased!**
- **Census scheduled for October 2010!**
- **Selected Socio-Economic Indicators**

# LATEST

## ***Zambia Expected to Produce Highest Quantity of Maize ever!***

The 2009/2010 Crop Forecasting Survey (CFS) results show that production of Maize is expected to increase by 48.1 percent from 1,887,010 metric tonnes during the 2008/2009 agricultural season to 2,795,483 metric tonnes during the 2009/2010 agricultural season. The results also show that area planted to maize increased by 10.4 percent from 1,125,466 hectares to 1,242,268 hectares. Furthermore, area harvested to maize is expected to increase by 18.5 percent from 911,492 hectares during the 2008/2009 agricultural season to 1,080,558 hectares during the 2009/2010 agricultural season.

The average yield rate of maize per hectare is also expected to increase from

1.7 metric tonnes per hectare in 2008/2009 agricultural season to 2.3 metric tonnes per hectare in 2009/2010 agricultural season. This represents a 34.2 percent increase.

The increase in maize production in the 2009/2010 agricultural season could largely be attributed to the good price farmers received last season and the adequate rains in most parts of the country. In addition, more farmers reported using hybrid seed than recycled or local seed this agricultural season compared to the 2008/2009 agricultural season.

## Crop Production Estimates, 2009/2010 Crop Forecasting Survey

CROP	Area planted (ha)			Area harvested (ha)			Expected Production (mt)			Yield Rate		
	2008/2009	2009/2010	% change	2008/2009	2009/2010	% change	2008/2009	2009/2010	% change	2008/2009	2009/2010	% change
Maize	1,125,466	1,242,268	10.4	911,492	1,080,558	18.5	1,887,010	2,795,483	48.1	1.68	2.25	34.2
Sorghum	40,485	34,251	(15.4)	32,212	28,908	(10.3)	21,829	27,732	27.0	0.54	0.81	50.2
Rice	31,032	35,841	15.5	25,582	30,788	20.4	41,929	51,656	23.2	1.35	1.44	6.7
Millet	61,626	56,789	(7.8)	55,951	50,808	(9.2)	48,967	47,997	(2.0)	0.79	0.85	6.4
Sunflower	71,290	54,450	(23.6)	65,417	51,602	(21.1)	33,653	26,420	(21.5)	0.47	0.49	2.8
Groundnuts	216,126	268,803	24.4	204,073	255,782	25.3	120,564	164,602	36.5	0.56	0.61	9.8
Soyabeans	64,680	62,331	(3.6)	62,877	60,777	(3.3)	118,794	111,888	(5.8)	1.84	1.80	(2.3)
Cotton	103,154	85,073	(17.5)	97,144	81,706	(15.9)	87,018	72,482	(16.7)	0.84	0.85	1.0
Irish potatoes	1,305	1,425	9.1	1,233	1,415	14.8	21,285	22,940	7.8	16.31	16.10	(1.2)
Virginia tobacco	11,638	11,984	3.0	11,084	11,758	6.1	18,487	22,074	19.4	1.59	1.84	16.0
Burley tobacco	7,785	8,618	10.7	7,727	8,381	8.5	8,758	9,809	12.0	1.13	1.14	1.2
Mixed beans	83,627	85,177	1.9	79,270	81,575	2.9	46,729	65,265	39.7	0.56	0.77	37.1
Cowpeas	12,967	6,416	(50.5)	11,189	6,026	(46.1)	7,462	2,722	(63.5)	0.58	0.42	(26.3)
Sweet potatoes	64,341	70,755	10.0	60,638	68,993	13.8	200,450	252,867	26.1	3.12	3.57	14.7
Paprika	312	363	16.2	291	351	20.5	1,020	533	(47.7)	3.27	1.47	(55.0)
Wheat	34,296	27,192	(20.7)	34,296	27,192	(20.7)	195,456	172,256	(11.9)	5.70	6.33	11.2
Barley		181			181			1,089				
Popcorn		5,597			5,149			7,846				

Source: CSO/MACO 2009/2010 Crop Forecasting Survey

At provincial level, the highest maize yields are expected to be recorded in Central province at 3.0 metric tonnes per hectare, where as the lowest yields are expected to be recorded in

Western Province at 1.0 percent. All the provinces are expected to record increases in yields compared to the previous season.

## Expected Maize Production by Province, 2009/2010 Crop Forecasting Survey

	Number of households growing crops	Area planted (ha)	Area to be harvested (ha)	Expected Production (MT)	Yield (MT)		Expected Sales (MT)
					2009/2010	2008/2009	
Central	167,999	237,386	208,443	717,444	3.0	2.1	440,277
Copperbelt	95,835	97,849	85,453	233,223	2.4	2.1	131,196
Eastern	274,572	289,334	263,306	540,553	1.9	1.4	165,992
Luapula	80,063	30,373	27,307	69,363	2.3	2.0	34,858
Lusaka	41,316	43,441	36,701	121,740	2.8	2.0	62,733
Nothern	169,500	114,607	109,762	308,078	2.7	2.5	172,342
Northwestern	89,686	66,562	59,345	130,860	2.0	1.6	64,430
Southern	173,294	274,184	221,531	582,984	2.1	1.5	263,202
Western	120,374	88,532	68,712	91,238	1.0	0.6	16,982
<b>Total</b>	<b>1,212,638</b>	<b>1,242,268</b>	<b>1,080,558</b>	<b>2,795,483</b>	<b>2.3</b>	<b>1.7</b>	<b>1,352,012</b>

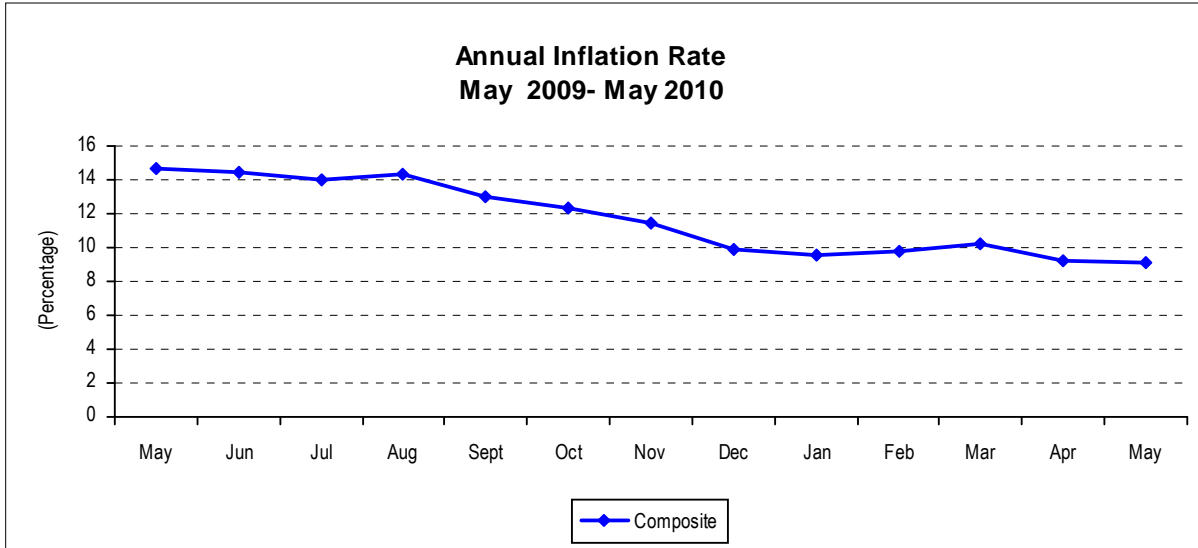
Source: CSO/MACO 2009/2010 Crop Forecasting Survey

# INFLATION

## ***Inflation declines to 9.1 percent in May 2010***

The annual rate of inflation, as measured by the all items Consumer Price Index (CPI), reduced slightly to 9.1 percent in May 2010 from 9.2 percent in April, 2010. The decline is attributed to the decrease in some food prices.

The recent increase in fuel prices will be reflected in the June 2010 Consumer Price Index (CPI).



### ***Changes in annual inflation rates for CPI Main Groups***

Between April 2010 and May 2010, the annual inflation rates declined for food, beverages and tobacco; clothing and footwear; household fuel and lighting; furniture and household goods; as well as

other goods and services. The annual inflation rates increased for medical care; transport and communication; and recreation and education.

**Annual Inflation Rate: CPI Main Groups (Per cent)**

	Total	Food And Beverages	Clothing And Footwear	Rent Fuel & Lighting	Furniture and Household Goods	Medical care	Transport and comms	Recreation And Education	Other Goods And Services
Jan 07 – Jan 06	9.8	1.0	34.9	15.1	16.5	24.9	22.8	15.9	11.4
Feb 07 – Feb 06	12.6	4.2	28.3	18.3	20.4	23.7	33.9	15.0	10.4
Mar 07 – Mar 06	12.7	4.9	26.9	15.8	21.6	22.1	33.5	14.9	11.0
Apr 07 – Apr 06	12.4	5.5	23.7	15.7	20.0	18.8	32.4	14.8	7.7
May 07 – May 06	11.8	5.7	18.8	17.1	19.2	16.5	28.2	10.4	7.0
Jun 07 – June 06	11.1	4.8	20.3	18.1	18.1	14.9	24.6	10.6	7.0
Jul 07 – July 06	11.2	6.7	19.4	14.9	17.4	14.0	18.2	10.0	7.7
Aug 07- Aug 06	10.7	7.9	19.6	11.6	15.2	11.6	11.8	10.0	7.5
Sep 07 – Sep 06	9.3	6.2	17.9	11.2	15.5	11.4	9.7	8.1	7.7
Oct 07 – Oct 06	9.0	5.6	14.7	11.8	16.8	10.9	10.3	7.4	6.3
Nov 07 – Nov 06	8.7	5.2	16.3	10.7	15.8	10.2	11.6	7.1	6.7
Dec 07 – Dec 06	8.9	5.9	14.2	11.2	13.4	9.1	13.6	8.2	6.9
Jan 08 – Jan 07	9.3	6.9	12.5	13.4	17.1	8.4	7.7	6.8	7.0

	Total	Food And Beverages	Clothing And Footwear	Rent Fuel & Lighting	Furniture and Household Goods	Medical care	Transport and comms	Recreation And Education	Other Goods And Services
Feb 08 – Feb 07	9.5	9.1	11.1	12.5	16.0	8.9	0.3	9.0	8.4
Mar 08 – Mar 07	9.8	9.1	11.2	12.2	16.1	10.0	1.1	10.3	9.4
Apr 08 – Apr 07	10.1	9.8	11.1	12.7	16.3	12.2	-0.2	11.1	9.4
May 08 – May 07	10.9	11.7	10.5	12.0	14.9	12.4	0.5	11.4	9.5
Jun 08 – June 07	12.1	15.6	9.7	11.4	13.4	12.2	-3.5	10.6	10.4
Jul 08 – Jul 07	12.6	14.2	9.3	14.9	14.2	13.9	4.7	11.0	11.3
Aug 08- Aug 07	13.2	16.3	6.3	14.5	13.3	12.9	5.3	11.2	10.7
Sep 08– Sep 07	14.2	16.2	5.6	17.7	14.8	11.8	11.5	11.5	10.4
Oct 08 – Oct 07	15.2	17.6	4.6	14.9	15.1	11.3	19.2	11.6	12.1
Nov 08 – Nov 07	15.3	18.5	2.7	14.5	16.1	10.3	16.4	12.4	12.5
Dec 08 – Dec 07	16.6	20.5	2.5	15.2	18.0	9.9	15.9	12.1	13.2
Jan 09 – Jan 08	16.0	21.3	3.0	8.9	13.8	9.2	18.3	11.7	15.2
Feb 09 – Feb 08	14.0	16.3	3.9	8.6	16.5	9.6	19.4	9.3	15.4
Mar 09 – Mar 08	13.1	13.9	5.9	10.4	16.3	10.1	19.7	7.9	15.2
Apr 09 – Apr 08	14.3	15.9	6.8	10.4	16.1	8.2	22.0	7.1	17.1
May 09 – May 08	14.7	16.1	7.9	10.7	21.2	8.0	16.6	6.0	20.0
Jun 09 – June 08	14.4	14.1	9.6	10.1	22.4	10.0	21.0	6.9	22.6
Jul 09 – Jul 08	14.0	14.9	9.9	7.9	22.1	10.2	13.0	8.9	21.6
Aug 09- Aug 08	14.3	14.6	11.4	11.7	21.7	10.3	10.4	10.1	20.6
Sep 09– Sep 08	13.0	13.9	13.6	9.9	21.4	13.3	1.3	9.7	20.5
Oct 09 – Oct 08	12.3	12.3	15.0	11.7	19.4	14.9	-3.2	12.0	24.7
Nov 09 – Nov 08	11.5	11.1	15.0	11.2	19.1	14.4	-3.1	11.0	23.6
Dec 09 – Dec 08	9.9	8.0	15.8	11.4	17.6	15.9	-3.4	10.6	26.0
Jan 10 – Jan 09	9.6	7.1	15.7	14.7	16.4	15.8	-4.0	10.5	23.0
Feb 10 – Feb 09	9.8	8.2	14.7	13.3	14.3	15.7	-1.1	9.9	21.1
Mar 10 – Mar 09	10.2	9.3	11.4	12.9	14.1	15.0	1.6	9.9	19.7
Apr 10 – Apr 09	9.2	7.3	11.4	14.4	13.0	15.0	1.6	9.8	20.2
May 10 – May 09	9.1	6.5	10.5	12.4	12.3	15.3	9.9	11.2	16.8

### ***Contributions of different Items to overall inflation***

Of the total 9.1 percent annual inflation in May 2010, food products accounted for 3.2 percentage points, while non-food

products in the CPI accounted for a total of 5.9 percentage points.

Items	Percentage Points Contributions of different items to overall inflation												
	May-09	Jun-09	Jul-09	Aug-09	Sep-09	Oct-09	Nov-09	Dec-09	Jan-10	Feb-10	Mar-10	Apr-10	May-10
Food Beverages and Tobacco	7.9	7	7.3	7.2	6.8	6	5.5	4	3.6	4.1	4.6	3.6	3.2
Clothing and Footwear	0.8	0.9	0.9	1	1.2	1.4	1.3	1.3	1.4	1.3	1	1.0	0.9
Rent and household energy	1.2	1.1	0.9	1.3	1.1	1.3	1.3	1.3	1.6	1.5	1.4	1.6	1.4
Furniture and Household Goods	2.4	2.5	2.5	2.5	2.4	2.2	2.2	2	1.8	1.7	1.6	1.5	1.5
Medical Care	0.1	0.1	0.1	0.1	0.1	0.1	0.1	0.1	0.1	0.1	0.2	0.1	0.2
Transport (fuel, airfares, new motor vehicles)	1.3	1.6	1.1	0.9	0.1	-0.2	-0.3	-0.3	-0.3	-0.1	0.1	0.2	0.7
Recreation and Education	0.4	0.5	0.5	0.7	0.7	0.8	0.7	0.7	0.7	0.6	0.6	0.6	0.7
Other Goods and Services	0.6	0.7	0.7	0.6	0.6	0.7	0.7	0.8	0.7	0.6	0.7	0.6	0.5
<b>All Items</b>	<b>14.7</b>	<b>14.4</b>	<b>14</b>	<b>14.3</b>	<b>13</b>	<b>12.3</b>	<b>11.5</b>	<b>9.9</b>	<b>9.6</b>	<b>9.8</b>	<b>10.2</b>	<b>9.2</b>	<b>9.1</b>

## ***The annual food inflation rate***

The annual food inflation rate was recorded at 6.5 percent in May 2010. This is a decline from 7.3 percent in April 2010.

## ***Non-food inflation***

The annual non-food inflation rate was recorded at 11.6 percent in May 2010. This is an increase from 11.2 percent in April 2010.

**Annual Inflation Rates: Food and Non food**

<b>Period</b>	<b>Total</b>	<b>Food</b>	<b>Non-Food</b>
Jan 06 – Jan 05	12.2	12.8	11.5
Feb 06 - Feb 05	10.3	10.2	10.3
Mar 06 - Mar 05	10.7	10.9	10.4
Apr 06 – Apr 05	9.4	8.3	10.6
May 06 – May 05	8.6	5.6	12.0
Jun 06 - Jun 05	8.5	5.4	11.8
Jul 06 - Jul 05	8.7	4.3	13.6
Aug 06 – Aug 05	8.0	0.4	16.4
Sep 06 – Sep 05	8.2	1.5	15.7
Oct 06 - Oct 05	7.9	1.0	15.4
Nov 06 - Nov 05	8.1	0.8	16.2
Dec06 – Dec 05	8.2	-0.2	18.1
Jan 07 - Jan 06	9.8	1.0	20.0
Feb 07 - Feb 06	12.6	4.2	22.1
Mar 07 - Mar 06	12.7	4.9	21.5
Apr 07 – Apr 06	12.4	5.5	20.1
May 07 – May 06	11.8	5.7	18.2
Jun 07 - Jun 06	11.1	4.8	17.7
Jul 07- Jul 06	11.2	6.7	15.6
Aug 07– Aug 06	10.7	7.9	13.3
Sep 07 – Sep 06	9.3	6.2	12.4
Oct 07- Oct 06	9.0	5.6	12.2
Nov 07- Nov 06	8.7	5.2	12.2
Dec07 – Dec 06	8.9	5.9	11.9
Jan 08 - Jan 07	9.3	6.9	11.7
Feb 08 - Feb 07	9.5	9.1	10.0
Mar 08 - Mar 07	9.8	9.1	10.4
Apr 08– Apr 07	10.1	9.8	10.5
May 08 – May 07	10.9	11.7	10.1
Jun 08 - Jun 07	12.1	15.6	8.8
Jul 08- Jul 07	12.6	14.2	11.2
Aug 08– Aug 07	13.2	16.3	10.4
Sep 08 – Sep 07	14.2	16.2	12.4
Oct 08- Oct 07	15.2	17.6	13.0
Nov 08- Nov 07	15.3	18.5	12.4
Dec 08 – Dec 07	16.6	20.5	12.9
Jan 09 - Jan 08	16.0	21.3	11.1
Feb 08 - Feb 07	14.0	16.3	11.7
Mar 09 - Mar 08	13.1	13.9	12.3
Apr 09– Apr 08	14.3	15.9	12.7
May 09 – May 08	14.7	16.1	13.3
Jun 09 - Jun 08	14.4	14.1	14.7
Jul 09- Jul 08	14.0	14.9	13.1
Aug 09– Aug 08	14.3	14.6	13.9
Sep 09 – Sep 08	13.0	13.9	12.1
Oct 09- Oct 08	12.3	12.3	12.3
Nov 09- Nov 08	11.5	11.1	11.9
Dec 09 – Dec 08	9.9	8.0	11.8
Jan 10 – Jan 09	9.6	7.1	12.0
Feb 10 – Feb 09	9.8	8.2	11.3
Mar 10 - Mar 09	10.2	9.3	11.0
Apr 10– Apr 09	9.2	7.3	11.2
May 10 – May 09	9.1	6.5	11.6

## ***National Average Prices of Selected Products***

A comparison of retail prices between April 2010 and May 2010 shows that the national average price of 25 kg bag of white roller meal declined by 5.1 percent, from K48, 940 to K46, 459, while the average price of a 20 litre tin of maize grain declined by 14.2 percent, from K23, 871 to K20, 473.

The national average price of 1kg of tomatoes declined by 5.1 percent, from K4,011 to K3,806, while the national average price of 1kg of dried Kapenta (Siavonga) increased by 3.6 percent, from K51,982 to K53,874.

**National Average Prices for selected Products and Months**

Product Description	2009		2010				Percentage Changes May-10/Apr-10
	December	January	February	March	April	May	
White breakfast M/meal 25Kg	61,753	62,183	62,642	62,868	62,845	61,945	-1.4
White Roller 25Kg	47,736	49,554	49,934	49,194	48,940	46,459	-5.1
White Maize Grain 20 litre tin	25,806	26,247	27,454	27,792	23,871	20,473	-14.2
Rice Imported 1 Kg	33,934	37,531	31,468	31,801	31,519	28,739	-8.8
Eet-Sum-mor 200 gms	7,089	7,322	7,376	7,315	7,223	7,142	-1.1
Cassava meal 1Kg	3,505	3,351	3,546	3,449	4,647	4,536	-2.4
Fillet Steak 1 Kg	29,294	29,427	29,997	29,856	29,661	30,065	1.4
Rump Steak 1 Kg	26,379	26,177	26,745	26,817	26,735	26,829	0.4
Brisket 1 Kg	19,750	20,009	19,851	19,854	19,968	20,413	2.2
Mince Meat 1 Kg	22,467	22,529	23,085	23,277	23,804	24,469	2.8
Mixed Cut 1 Kg	18,607	18,986	18,690	18,506	19,085	19,127	0.2
T-bone 1 Kg	25,793	26,161	25,847	24,719	24,972	25,401	1.7
Beef Sausages 1 Kg	22,482	24,393	23,772	24,395	25,220	25,390	0.7
Offals 1 Kg	11,406	11,336	11,116	11,348	11,542	11,597	0.5
Pork Sausages 1 Kg	27,394	28,133	28,362	28,582	30,076	29,513	-1.9
Dressed chicken 1 Kg	17,231	17,279	17,252	17,550	18,094	17,322	-4.3
Fresh Kapenta 400 gms	5,707	5,700	5,904	5,608	5,927	5,862	-1.1
Bream Fresh/Frozen 1 Kg	16,138	15,777	16,118	15,049	15,084	14,535	-3.6
Buka Buka 1 Kg	15,556	14,753	14,436	14,745	15,269	14,731	-3.5
Dried Kapenta Mpulungu 1 Kg	49,923	54,382	56,196	56,324	59,356	58,929	-0.7
Dried Kapenta Siavonga 1 kg	48,526	47,761	48,125	54,013	51,982	53,874	3.6
Dried bream 1 Kg	30,522	32,885	33,952	33,933	35,310	33,647	-4.7
Eggs 1 Unit	8,255	8,178	8,296	8,500	8,399	8,277	-1.5
Cabbage 1kg	1,535	1,575	1,615	1,597	1,912	1,820	-4.8
Tomatoes 1kg	3,073	2,976	3,427	4,293	4,011	3,806	-5.1
Dried beans 1kg	8,746	8,883	8,985	9,103	8,704	8,768	0.7
Shelled groundnut 1kg	7,705	7,679	7,877	8,158	8,094	7,604	-6.1
Sweet potatoes 1kg	2,140	2,892	2,521	2,345	1,438	1,342	-6.7
Raw cassava tubers Unsoaked 1kg	1,441	1,512	1,582	1,565	1,738	1,449	-16.6
Mosi 375 mls (bottle)	5,554	5,558	5,519	5,539	5,565	5,293	-4.9
Castle Lager 375mls (bottle)	5,605	5,659	5,582	5,591	5,651	5,355	-5.2
Air fare Lusaka/London British Airways 1 Way	6,038,400	6,001,900	6,129,600	6,129,600	6,129,600	6,380,000	4.1
Air Fare Lusaka/Ndola Zambezi Airways 1 way	600,000	575,000	587,500	600,000	600,000	650,000	8.3
Bed & continental Breakfast 3 to 5 star Hotel	593,879	631,423	576,938	590,050	582,225	604,885	3.9
Bed & Continental Breakfast 2 star Down to Motel	141,484	139,614	137,091	140,141	140,774	141,264	0.3

# INTERNATIONAL MERCHANDISE TRADE

## April 2010 Records Trade Surplus

Zambia recorded a Trade surplus valued at K1,134.3 Billion in April 2010. This means that the country exported more in April 2010 than it imported in value terms.

### Total Exports (fob) and Imports (cif), January 2010 to April 2010\* (K' Millions)

Months	Imports (cif)	Domestic Exports (fob)	Re-Exports (fob)	Total Exports (fob)	Trade Balance
January	1,765,443	2,126,875	86,773	2,213,649	448,206
February	1,868,729	2,301,675	83,337	2,385,012	516,283
March <sup>@</sup>	2,119,079	3,140,924	122,582	3,263,506	1,144,427
<b>Quarter 1</b>	<b>5,753,251</b>	<b>7,569,474</b>	<b>292,692</b>	<b>7,862,167</b>	<b>2,108,916</b>
April*	2,065,995	3,086,584	113,751	3,200,335	1,134,340
<b>Total 2010</b>	<b>7,819,246</b>	<b>10,656,058</b>	<b>406,443</b>	<b>11,062,502</b>	<b>3,243,256</b>

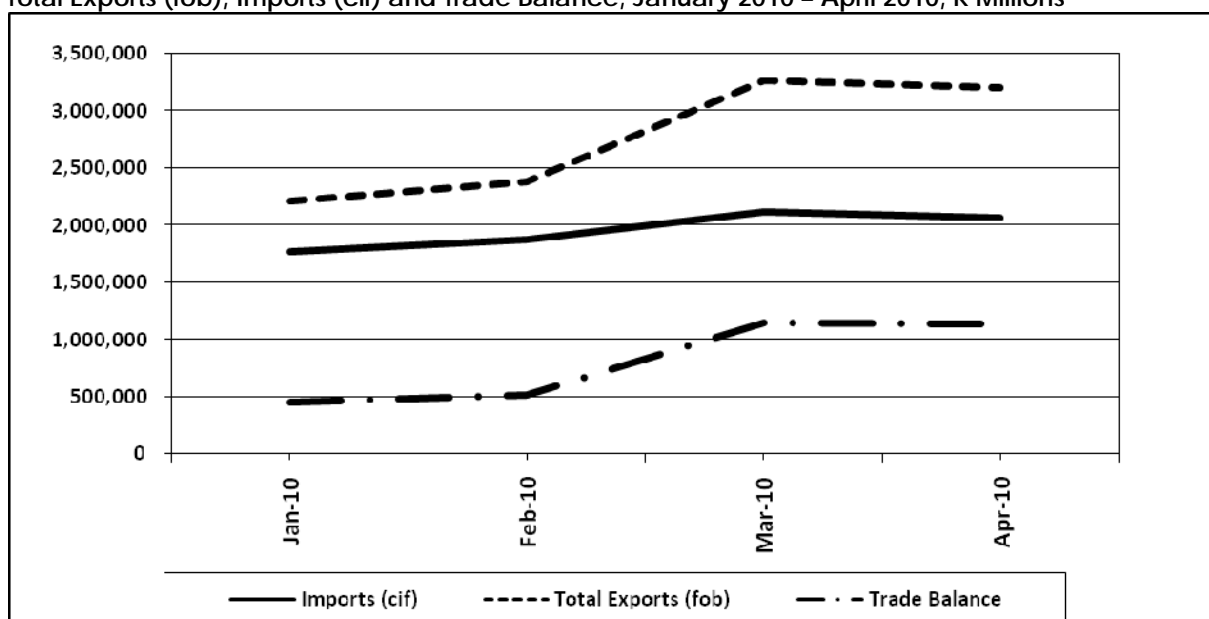
Source: CSO, International Trade Statistics, 2010

Note: (\*) Provisional

(<sup>@</sup>) Revised

These Trade Data are Compiled Based on the General Trade System

### Total Exports (fob), Imports (cif) and Trade Balance, January 2010 – April 2010, K'Millions



### Total Exports (fob) and Imports (cif) (2000-2009) in K' Billions

YEAR	Domestic Exports (fob)	Re - Exports (fob)	Total Exports (fob)	Imports (cif)	Trade Balance (Export less Imports)
2000	2,680	36	2,717	2,752	(35)
2001	3,523	14	3,537	3,900	(363)
2002	4,046	24	4,070	4,733	(663)
2003	4,614	28	4,642	7,440	(2,798)
2004	7,460	66	7,526	10,279	(2,753)
2005	9,565	48	9,613	11,467	(1,854)
2006	13,388	23	13,411	11,050	2,361
2007	18,301	98	18,399	15,945	2,454
2008	17,951	702	18,653	18,476	124
2009	20,312	1,052	21,365	18,941	2,424



## **Exports by major product categories April 2010 and March 2010**

Zambia's major export products in April 2010 were from the intermediate goods category accounting for 76.9 percent comprising mainly copper cathodes & sections of refined copper and copper blister. The Raw materials a category was

second with 18.2 percent comprising mainly copper ores & concentrates; and Cobalt ores & concentrates. Other exports were consumer goods and capital goods collectively accounting for 5.0 percent of total exports for April 2010.

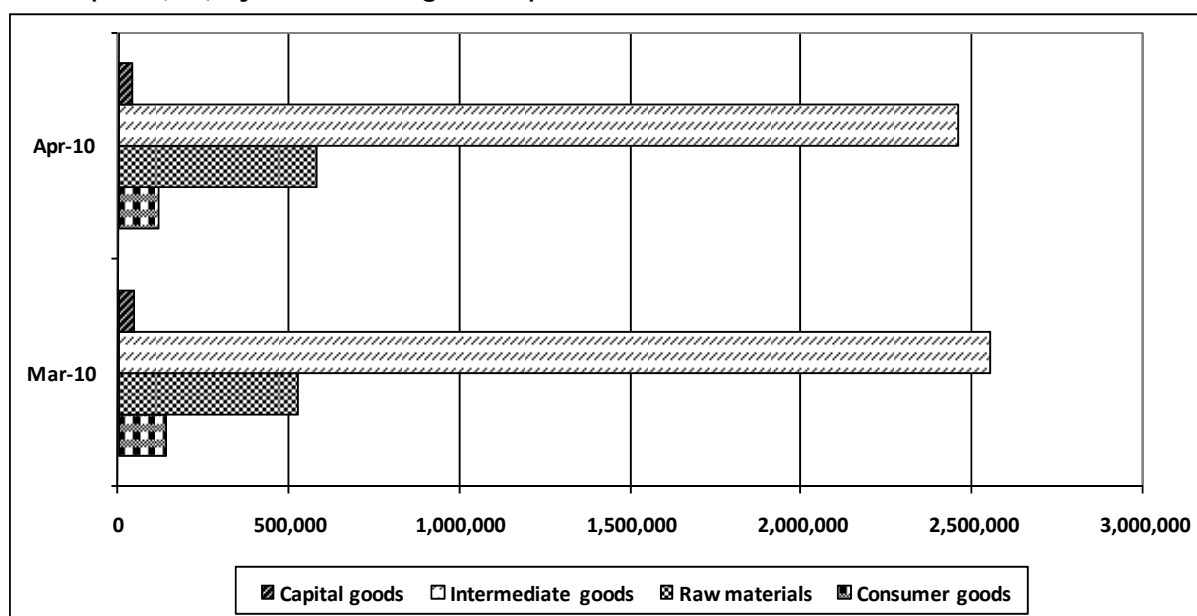
**Exports by major product categories April 2010\* and March 2010, K'Millions**

Product Category	Apr-10*		Mar-10®	
	Value (K'million)	% Share	Value (K'million)	% Share
Consumer goods	116,819	3.7	139,935	4.3
Raw materials	581,433	18.2	526,529	16.1
Intermediate goods	2,460,158	76.9	2549558	78.1
Capital goods	41,926	1.3	47,483	1.5
<b>Total:</b>	<b>3,200,335</b>	<b>100.0</b>	<b>3,263,506</b>	<b>100.0</b>

Source: CSO, International Trade Statistics, 2010

Note: (\*) Provisional (R) Revised figures

**Total Exports (fob) by Product Categories, April 2010 and March 2010 in K'Millions**



Source: CSO, International Trade Statistics, 2010

## **Zambia's Metal Exports and Non-Traditional Exports (NTEs) April 2010 and March 2010**

There has been a gradual increase in the total value of exports between April and March 2010. The country's ever dominant metal products recorded a higher value in revenue growth of 5.1 percent in nominal terms, between April and March 2010. This could be attributed to, among other factors, the favourable metal prices on the International market. The overall

contribution of metal products to the total export earnings was 88.0 and 82.1 percent in April and March 2010, respectively.

In terms of percentage contribution to the total exports earnings, NTEs recorded 12.0 and 17.9 percent in April and March 2010, respectively.

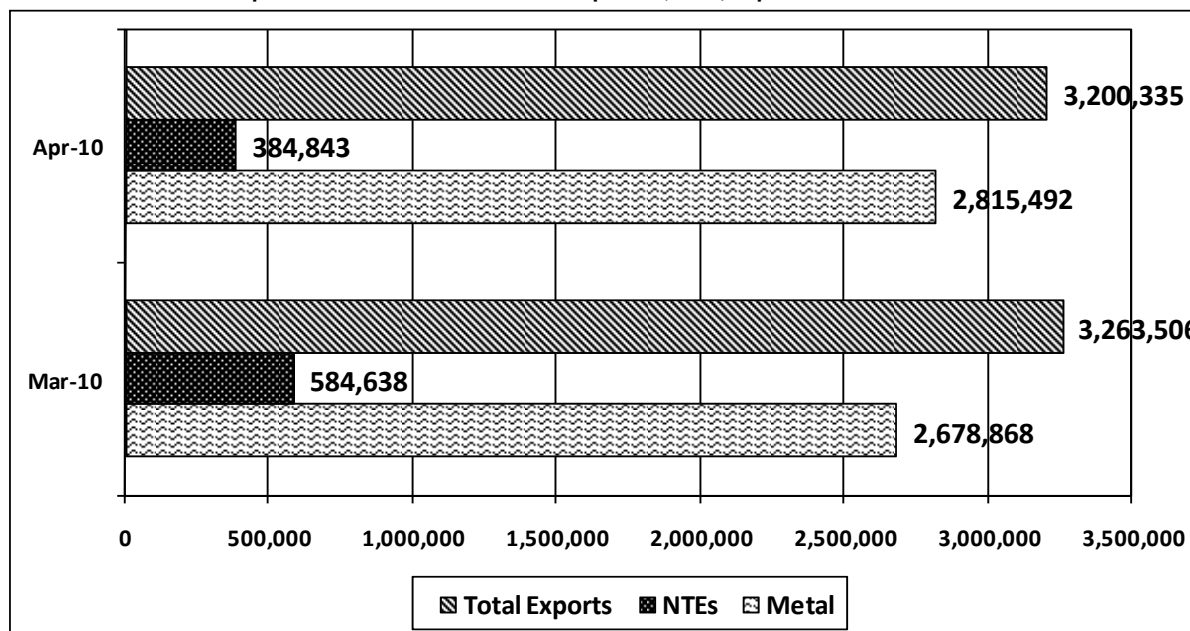
**Zambia's Metals Exports and Non-Traditional Exports (NTEs) April 2010\* and March 2010, K'Million.**

GROUP	Apr-10*		Mar-10®	
	Value (K'Million)	% Share	Value (K'Million)	% Share
Traditional Exports ( <i>mainly Metals</i> )	2,815,492	88.0	2,678,868	82.1
Non-Traditional Exports	384,843	12.0	584,638	17.9
<b>Total Exports</b>	<b>3,200,335</b>	<b>100.0</b>	<b>3,263,506</b>	<b>100.0</b>

Source: CSO, International Trade Statistics, 2010

Note: (\*) Provisional (R) Revised figures

**Zambia's Metals Exports and Non-Traditional Exports (NTEs) April 2010\* and March 2010, K'Million**



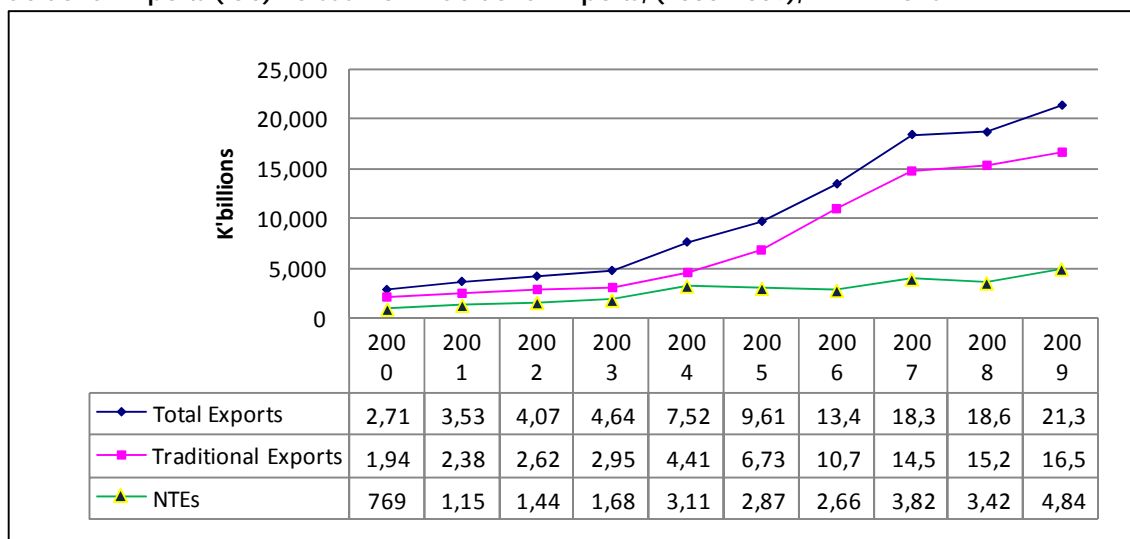
Source: CSO, International Trade Statistics, 2010

**Traditional Exports (fob) versus Non-Traditional Exports, (2000-2009), in K'Billions**

YEAR	Traditional Exports	Non-Traditional Exports	Total Exports (fob)	% Share Non-Traditional Exports
2000	1,948	769	2,717	28.3
2001	2,380	1,157	3,537	32.7
2002	2,628	1,442	4,070	35.4
2003	2,958	1,684	4,642	36.3
2004	4,412	3,114	7,526	41.4
2005	6,734	2,879	9,613	29.9
2006	10,749	2,662	13,411	19.8
2007	14,572	3,827	18,399	20.8
2008	15,231	3,422	18,653	18.3
2009	16,519	4,846	21,365	22.7

Source: CSO, International Trade Statistics, 2010

**Traditional Exports (fob) versus Non-Traditional Exports, (2000-2009), in K'Billions**



Source: CSO, International Trade Statistics, 2010

**Traditional Exports versus non Traditional exports (2000-2009) in Millions of US Dollar**

YEAR	Traditional Exports	Non-Traditional Exports	Total Exports	% Share of NTEs
2000	623	246	869	28.3
2001	659	320	979	32.7
2002	610	324	934	34.3
2003	624	355	979	36.3
2004	925	653	1,577	41.4
2005	1,525	652	2,177	29.9
2006	2,951	731	3,682	19.9
2007	3,660	958	4,617	20.7
2008	4,164	935	5,099	18.3
2009	3,265	976	4,241	23.0

Source: CSO, International Trade Statistics, 2010

**Traditional Exports versus Non-Traditional Exports (2000-2009) in Millions of US Dollar**

YEAR	Traditional Exports	% Growth	Non-Traditional Exports	% Growth	Total Exports	% Growth
2000	1,948		769		2,717	
2001	2,380	22.2	1,157	50.5	3,537	30.2
2002	2,628	10.4	1,442	24.6	4,070	15.1
2003	2,958	12.6	1,684	16.8	4,642	14.1
2004	4,412	49.2	3,114	84.9	7,526	62.1
2005	6,734	52.6	2,879	(7.6)	9,613	27.7
2006	10,749	59.6	2,662	(7.5)	13,411	39.5
2007	14,572	35.6	3,827	43.8	18,399	37.2
2008	15,231	4.5	3,422	(10.6)	18,653	1.4
2009	16,519	8.5	4,846	41.6	21,365	14.5

Source: CSO, International Trade Statistics, 2010

NOTE: GROWTH RATES ARE IN NOMINAL TERMS

## ***Zambia's Major Exports Classified by Harmonized Coding System (HS), April 2010***

Zambia's major export products in April 2010 were Copper related including Copper and articles thereof; and Ores, slag & ash collectively accounting for 88.6 percent of total export earnings. Other export products were other base metals, cermets and articles thereof (2.2

percent); Boilers, machinery & mechanical appliances (1.0 percent); and Tobacco and manufactured tobacco substitutes (1.0 percent). These five product categories collectively accounted for 92.8 percent of Zambia's total export earnings for April 2010.

### **Zambia's Major Exports by HS Chapter for April 2010\* (K' Millions)**

Chapter	Description	Apr - 2010*	
		Value	% Share
74	Copper and articles thereof	2,292,090	71.6
26	Ores, slag and ash	542,512	17.0
<i>Of which:</i>	<i>Copper ores and concentrates</i>	<i>469,390</i>	<i>86.5</i>
	<i>Cobalt ores and concentrates</i>	<i>53,528</i>	<i>9.9</i>
	<i>Ash and residues containing mainly copper</i>	<i>9,731</i>	<i>1.8</i>
	<i>Manganese ores/concentrates(inc.ferruginous), with</i>	<i>9,248</i>	<i>1.7</i>
	Rest of Chapter 26	615	0.1
81	Other base metals; cermets; articles thereof	68,866	2.2
84	Boilers, mchy & mech appliance; parts	30,617	1.0
24	Tobacco and manufactured tobacco substitutes	30,451	1.0
25	Salt; sulphur; earth & ston; plastering mat; lime & cem	27,594	0.9
17	Sugars and sugar confectionery	27,225	0.9
28	Inorgn chem; compds of prec met, radioact elements etc	20,517	0.6
85	Electrical mchy equip parts thereof; sound recorder etc	19,279	0.6
11	Prod mill indust; malt; starches; insulin; wheat gluten	15,001	0.5
	Other chapters	126,183	3.9
<b>Total:</b>		<b>3,200,335</b>	<b>100.0</b>

Source: CSO, *International Trade Statistics, 2010*

Note: (\*) Provisional

### ***Zambia's Major Export Destinations by Product in April 2010***

The five major destinations of Zambia's exports in April 2010 were Switzerland (55.7 percent), China (20.5 percent), United Arab Emirates (6.0 percent), South Africa (5.5 percent) and Democratic Republic of Congo (3.4 percent). These five countries collectively accounted for 91.1 percent of Zambia's total export earnings.

Zambia's major export destination was Switzerland accounting for 55.7 percent. The major export products to Switzerland were Cathodes & sections of cathodes of refined copper (50.1 percent); Copper ores & concentrates (26.2 percent); Plates, sheets and strips of refined copper

uncoiled (10.3 percent); and Cobalt ores and concentrates ( 9.2 percent).

China was the second largest destination of Zambia's total exports accounting for 20.5 percent. The major export products were Cathodes & sections of cathodes of refined copper (53.3 percent); Copper blister (29.2 percent); Plates, sheets and strip, of refined copper, uncoiled (7.8 percent); Copper (excl. Master) alloys, nes, unwrought (6.2 percent) and Master alloys of copper (1.3 percent).

Zambia's third major export destination was the United Arab Emirates with 6.0 percent. The major export products to

the United Arab Emirates were Cathodes and sections of cathodes of refined copper at 100 percent.

South Africa was the fourth largest destination of Zambia's total exports accounting for 5.5 percent. The major export products were Wire of refined copper, maximum cross-sectional dimension >6mm (27.8 percent); Other: articles of cobalt, nes (25.5 percent); Electric conductors, nes, for a voltage <=80 v (9.2 percent); Cobalt ores and concentrates (3.8 percent) and Wire of

refined copper, maximum cross-sectional (3.8 percent).

The Democratic Republic of Congo was the fifth largest destination of Zambia's total exports accounting for 3.4 percent. The major export products were Portland cement (excl. white (12.4 percent); Raw cane sugar, in solid form (11.4 percent); Wheat or meslin flour (6.4 percent); other mixtures with basis of odoriferous subst.inc (5.2 percent) and Sulphuric acid; oleum in bulk, (5.1 percent).

### Zambia's Five Major Export Destinations by Product for April 2010\*

Country / Hs-Code	Description	Apr-10*	
		Value (K'Million)	% Share
<b>SWITZERLAND</b>		<b>1,782,824</b>	<b>100.0</b>
74031100	Cathodes and sections of cathodes of refined copper	892,689	50.1
26030000	Copper ores and concentrates	467,024	26.2
74091900	Plates, sheets and strip, of refined copper, uncoil	184,193	10.3
74031910	Copper blister	163,848	9.2
26050000	Cobalt ores and concentrates	40,192	2.3
81059000	Other: articles of cobalt, nes	22,202	1.2
28220010	Cobalt oxides and hydroxides: commercial cobalt ox	6,831	0.4
74032900	Copper (excl. master) alloys, nes, unwrought	3,682	0.2
52010000	Cotton, not carded or combed	1,568	0.1
74031990	Other	547	0.0
Other Products		47	0.0
<b>% of Total April Exports</b>		<b>55.7</b>	
<b>CHINA</b>		<b>656,328</b>	<b>100.0</b>
74031100	Cathodes and sections of cathodes of refined copper	349,891	53.3
74031910	Copper blister	191,931	29.2
74091900	Plates, sheets and strip, of refined copper, uncoil	51,208	7.8
74032900	Copper (excl. master) alloys, nes, unwrought	40,983	6.2
74050000	Master alloys of copper	8,484	1.3
26020000	Manganese ores/concentrates(inc.ferruginous), with	4,374	0.7
26050000	Cobalt ores and concentrates	3,722	0.6
28220010	Cobalt oxides and hydroxides: commercial cobalt ox	1,721	0.3
81059000	Other: articles of cobalt, nes	1,566	0.2
26203000	Ash and residues containing mainly copper	804	0.1
Other products		1,645	0.3
<b>% of Total April Exports</b>		<b>20.5</b>	
<b>UNITED ARAB EMIRATES</b>		<b>190,676</b>	<b>100.0</b>
74031100	Cathodes and sections of cathodes of refined copper	190,668	100.0
72042900	Waste and scrap of alloy steel (excl. stainless)	7	0.0
73110000	Containers for compressed or liquefied gas, of iron	1	0.0
73030090	Tubes, pipes and hollow profiles, of cast iron - iron	0	0.0
01051100	Live fowls of species gallus domesticus, weighing	0	0.0
01061900	Mammals--other	0	0.0
01062000	Reptiles (including snakes and turtles)	0	0.0
01063900	Birds:--other	0	0.0
01069000	Other live animals	0	0.0
02012000	Other cuts with bonnie in	0	0.0
Other products		0	0.0
<b>% of Total April Exports</b>		<b>6.0</b>	
<b>SOUTH AFRICA</b>		<b>177,078</b>	<b>100.0</b>
74081100	Wire of refined copper, maximum cross-sectional dimension >6mm	49,298	27.8
81059000	Other: articles of cobalt, nes	45,098	25.5
85444900	Electric conductors, nes, for a voltage <=80 v, no	16,363	9.2
26050000	Cobalt ores and concentrates	6,688	3.8
74081900	Wire of refined copper, maximum cross-sectional di	6,657	3.8
52010000	Cotton, not carded or combed	6,093	3.4
17011100	Raw cane sugar, in solid form	4,232	2.4

Country / Hs-Code	Description	Apr-10*	
		Value (K'Million)	% Share
74130000	Stranded wire, cables... of copper, not electrical	4,065	2.3
88039000	Other .nes	3,579	2.0
26020000	Manganese ores/concentrates(inc.ferruginous), with	3,456	2.0
Other products		31,548	17.8
<b>% of Total April Exports</b>		<b>5.5</b>	
<b>CONGO DR</b>		<b>110,238</b>	<b>100.0</b>
25232900	Portland cement (excl. white)	13,713	12.4
17011100	Raw cane sugar, in solid form	12,591	11.4
11010000	Wheat or meslin flour	7,029	6.4
33029010	Other mixtures with basis of odoriferous subst.inc	5,721	5.2
28070010	Sulphuric acid; oleum in bulk	5,603	5.1
84241000	Fire extinguishers	3,471	3.1
33049900	Beauty, make-up, skin-care (incl. suntan), nes	3,219	2.9
82081000	Knives and cutting blades, for metal working machi	2,759	2.5
11022000	Maize (corn) flour	2,491	2.3
28020010	Sulphur, sublimed or precipitated; colloidal sulph	2,432	2.2
Other Products		51,209	46.5
<b>% of Total April Exports</b>		<b>3.4</b>	
<b>Other Destination</b>		<b>283,190</b>	<b>8.8</b>
<b>Total Value of April Exports</b>		<b>3,200,335</b>	

Source: CSO, International Trade Statistics, 2010

Note: (\*) Provisional

### **Export Market Shares by Regional Groupings, April 2010 and March 2010**

Asia was the largest market for Zambia's total exports, accounting for 26.7 and 30.7 percent in April and March 2010, respectively. Within Asia, China was the dominant market with 76.7 percent in April and 82.5 percent in March 2010. The United Arab Emirates was second with 22.3 percent in April 2010, while it was third in March 2010 with 5.3 percent. The Republic of Korea was the third dominant market in the month of April 2010 with 0.6 percent, while it was second in March 2010 with 11.4 percent. Other notable markets were India and Hong Kong.

The Southern African Development Community (SADC) regional grouping was the second largest market for Zambia's total exports accounting for 11.5 and 24.0 percent in April and March 2010, respectively. Within SADC, South Africa was the dominant market in April and March 2010 with 48.1 and 69.0 percent, respectively. Congo DR was the second dominant market with 29.9 and 18.6 percent in April and March 2010, respectively. Other key markets were Zimbabwe, Malawi, Namibia and Botswana.

The Common Market for Eastern and Southern Africa (COMESA) grouping of

countries was the third largest market for Zambia's total exports accounting for 7.0 and 7.2 percent, in April and March 2010, respectively. Within COMESA, Congo DR was the dominant market in both months with 49.5 and 61.9 percent in April and March 2010, respectively. Egypt was the second dominant market with 14.8 percent in April 2010, while Zimbabwe was second in March 2010 with 16.9 percent. Other notable markets were Malawi and Kenya.

The European Union (EU) was the fourth largest market for Zambia's total exports accounting for 4.1 and 3.6 percent of Zambia's total exports in April and March 2010, respectively. Within the EU market, the United Kingdom was the dominant market with 53.9 and 49.0 percent in April and March 2010, respectively. Luxembourg was second with 12.3 percent in April 2010, while Belgium was second in March 2010, with 32.9 percent. The Netherlands was the third largest market with 11.2 and 13.0 percent in April and March 2010, respectively. Other notable markets were Sweden, Germany and Italy.

### Export Market Shares by Regional Groupings, April 2010 and March 2010 (K' Millions)

GROUPING	Apr-10*		GROUPING	Mar-10®	
	Value (K'Million)	% Share		Value (K'Million)	% Share
<b>ASIA</b>	<b>855,870</b>	<b>100.0</b>	<b>ASIA</b>	<b>1,000,401</b>	<b>100.0</b>
China	656,328	76.7	China	825,308	82.5
United Arab Emirates	190,677	22.3	Korea, republic of	113,753	11.4
Korea, Republic of	5,331	0.6	United Arab Emirates	53,312	5.3
India	1,806	0.2	India	7,327	0.7
Hong Kong	1,009	0.1	Hong Kong	299	0.0
Other ASIA	719	0.1	Other ASIA	402	0.0
<b>% of Total April Exports</b>	<b>26.7</b>		<b>% of Total February Exports</b>	<b>30.7</b>	
<b>SADC</b>	<b>368,225</b>	<b>100.0</b>	<b>SADC</b>	<b>782,233</b>	<b>100.0</b>
South Africa	177,078	48.1	South Africa	539,388	69.0
Congo DR	110,238	29.9	Congo DR	145,449	18.6
Zimbabwe	27,364	7.4	Zimbabwe	39,704	5.1
Malawi	26,697	7.3	Botswana	15,334	2.0
Namibia	8,313	2.3	Malawi	15,057	1.9
Other SADC	18,535	5.0	Other SADC	27,301	3.5
<b>% of Total April Exports</b>	<b>11.5</b>		<b>% of Total February Exports</b>	<b>24.0</b>	
<b>COMESA</b>	<b>222,612</b>	<b>100.0</b>	<b>COMESA</b>	<b>235,113</b>	<b>100.0</b>
Congo DR	110,238	49.5	Congo DR	145,449	61.9
Egypt	32,927	14.8	Zimbabwe	39,704	16.9
Zimbabwe	27,364	12.3	Malawi	15,057	6.4
Malawi	26,697	12.0	Kenya	11,115	4.7
Kenya	13,755	6.2	Egypt	8,692	3.7
Other COMESA	11,631	5.2	Other COMESA	15,095	0.5
<b>% of Total April Exports</b>	<b>7.0</b>		<b>% of Total February Exports</b>	<b>7.2</b>	
<b>EUROPEAN UNION</b>	<b>132,040</b>	<b>100.0</b>	<b>EUROPEAN UNION</b>	<b>118,822</b>	<b>100.0</b>
United Kingdom	71,206	53.9	United Kingdom	53,031	49.0
Luxembourg	16,175	12.3	Belgium	35,587	32.9
Netherlands	14,846	11.2	Netherlands	14,101	13.0
Belgium	11,572	8.8	Germany	4,274	3.9
Sweden	7,371	5.6	Italy	399	0.4
Other EU	10,870	8.2	Other EU	842	0.8
<b>% of Total April Exports</b>	<b>4.1</b>		<b>% of Total February Exports</b>	<b>3.6</b>	
<b>Total Value of April Exports</b>	<b>3,200,335</b>		<b>Total Value of February Exports</b>	<b>3,263,506</b>	

Source: CSO, International Trade Statistics, 2010

Note: (\*) Provisional

Some countries are members of both SADC and COMESA

### Total Exports by Major Ports of Exit, April 2010 (K' million)

Zambia's six major ports of exit for exports in April 2010 were Ndola, Chirundu, Kitwe, Livingstone, Nakonde and Kapiri Mposhi port offices. Ndola port office was the major port of exit in April 2010 with 30.4 percent of Zambia's total exports. This is attributed to the copper and cobalt that are mainly exported through the Ndola Port. Chirundu was the second major

port of exit with 23.4 of Zambia's total exports in April 2010.

Kitwe port was third with 14.0 percent. It was followed by Livingstone (8.2 percent); Nakonde (7.4 percent), and Kapiri-Mposhi (7.2 percent). These six ports collectively accounted for 90.6 percent of Zambia's total exports.

### Total Exports by Major Ports of Exit, January to April 2010\* (K' million)

Port office	January®		February®		March®		April*	
	Value	% share	Value	% share	Value	% share	Value	% share
Ndola port office	517,516	23.4	620,967	26	752,962	23.1	972,433	30.4
Chirundu	170,047	7.7	364,679	15.3	671,661	20.6	748,403	23.4
Kitwe port office	499,740	22.6	688,701	28.9	460,839	14.1	448,588	14.0
L/stone port	439,027	19.8	227,566	9.5	633,769	19.4	262,926	8.2
Nakonde	13,911	0.6	14,379	0.6	64,011	2	235,691	7.4
Kapiri mposhi	325,065	14.7	270,383	11.3	305,271	9.4	229,137	7.2
Chingola	49,083	2.2	33,272	1.4	77,629	2.4	103,215	3.2
Kazungula	16,245	0.7	25,795	1.1	91,796	2.8	42,089	1.3
Lusaka airport	19,603	0.9	22,374	0.9	36,872	1.1	19,618	0.6
Lusaka port office	62,396	2.8	11,053	0.5	16,439	0.5	16,463	0.5
Other	101,014	4.5	105,841	4.4	152,258	4.8	121,772	3.8
<b>Total</b>	<b>2,213,647</b>	<b>100</b>	<b>2,385,010</b>	<b>100</b>	<b>3,263,507</b>	<b>100</b>	<b>3,200,335</b>	<b>100</b>

Source: CSO, International Trade Statistics, 2010

Note: (\*) Provisional

## Zambia's major exports by Mode of Transport April 2010 (K' million)

Road was the major mode of transport for Zambia's exports with 84.1 percent in April 2010. Rail was the second major mode of transport with 14.9 in April 2010.

Other notable modes of transport in April 2010 were Air (0.6 percent) and Electric power line (0.3 percent).

Zambia's major exports by Mode of Transport, January to April 2010 (K' million)

Mode of transport	January <sup>@</sup>		February <sup>@</sup>		March <sup>@</sup>		April <sup>*</sup>	
	Value	% share	Value	% share	Value	% share	Value	% share
Road transport	1,800,127	81.3	1,868,392	78.3	2,501,751	76.7	2,691,384	84.1
Rail transport	391,084	17.7	485,069	20.3	667,277	20.4	477,988	14.9
Air transport	19,798	0.9	22,622	0.9	72,455	2.2	20,505	0.6
Electric power line	2,627	0.1	8,915	0.4	8,478	0.3	10,452	0.3
Others	12	0.0	15	0.0	13544	0.4	5	0.0
<b>Total</b>	<b>2,213,649</b>	<b>100</b>	<b>2,385,012</b>	<b>100</b>	<b>3,263,506</b>	<b>100</b>	<b>3,200,335</b>	<b>100</b>

Source: CSO, International Trade Statistics, 2010

Note: (\*) Provisional

## Imports by Major Product Categories, April 2010

Zambia's major import products by category in April 2010 were from the intermediate goods category accounting for 39.4 percent. These mostly comprised of parts of cobalt oxides and hydroxides, commercial cobalt oxides; parts of machinery of

84.26, 84.29 and 84.30, nes; parts of machinery of 84.74 and crude palm oil. Raw materials accounted for 28.6 percent. Other notable imports were Capital Goods and Consumer goods accounting for 20.7 and 11.4 percent, respectively.

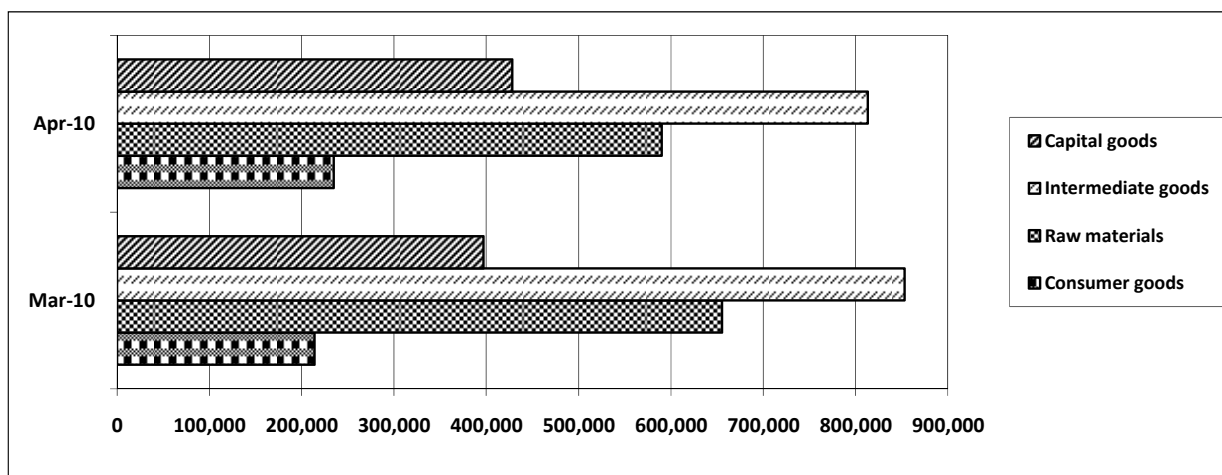
Imports (cif) by major product categories April\* and March 2010, K'Millions

Description	April 2010 <sup>*</sup>		March 2010 <sup>@</sup>	
	Value (K'million)	% Share	Value (K'million)	% Share
Consumer goods	234,611	11.4	213,831	10.1
Raw materials	589,971	28.6	655,199	30.9
Intermediate goods	813,221	39.4	853,067	40.3
Capital goods	428,191	20.7	396,981	18.7
<b>Total:</b>	<b>2,065,995</b>	<b>100.0</b>	<b>2,119,079</b>	<b>100.0</b>

Source: CSO, International Trade Statistics, 2010

Note: (\*) Provisional

Imports (cif) by major product categories April 2010 and MARCH 2010, K'Millions



Source: CSO, International Trade Statistics, 2010

Note: (\*) Provisional



## **Zambia's Major Imports by Broad Economic Category (BEC) for April and March 2010**

The total value of imports by Broad Economic Category (BEC) in April 2010 was valued at K 2, 036.0 billion compared to K 2,119.1 billion in March 2010. The most prominent imports were Industrial supplies mainly those in their primary and processed form and fuels & lubricants which collectively accounted for 54.1 and 47.9 percent in April and March

2010, respectively. Industrial supplies; and Capital goods (excluding transport equipment), parts & accessories collectively accounted for 71.6 percent. Other notable imports in April and March 2010 were Fuels and lubricants; Transport equipment, parts and accessories; and consumer goods not elsewhere specified.

### **Imports (cif) by Broad Economic Category (BEC), April 2010 and March 2010 (K 'Millions)**

CODE	DESCRIPTION	Apr-10*		Mar-10®	
		Value (K'million)	% Share	Value (K'million)	% Share
1	Food and beverages	70,515	3.4	80,703	3.8
2	Industrial supplies not elsewhere specified	1,117,666	54.1	1,015,937	47.9
3	Fuels and lubricants	225,762	10.9	400,453	18.9
4	Capital goods (excl'transport equipment), parts & accessories	361,077	17.5	363,334	17.1
5	Transport equipment, parts and accessories thereof	153,895	7.4	149,355	7.0
6	Consumer goods not elsewhere specified	132,571	6.4	107,342	5.1
7	Goods not elsewhere specified	4,508	0.2	1,955	0.1
<b>Total:</b>		<b>2,065,995</b>	<b>100.0</b>	<b>2,119,078</b>	<b>100.0</b>

Source: CSO, International Trade Statistics, 2010

Note: (\*) Provisional

## **Zambia's Major Imports by the Harmonised Coding System (HS) in April 2010**

Zambia's major import products in April 2010 were Boilers, machinery and mechanical appliances & parts, accounting for 13.9 percent. Other notable import products during the same period were Ores; slag & ash; Mineral fuels, oils & products of their distillation;

Vehicles o/t railw/tranw rool-stock, pts & accessories; Fertilizers; Electrical mechanical equipment parts thereof; Plastics and articles thereof; and Article of iron and steel collectively accounting for 43.5 percent.

### **Zambia's Major Imports by HS Chapters for April\* 2010, K' Millions**

Chapter	Description	April* 2010	
		Value	% Share
<b>84</b>	<b>Boilers, machinery &amp; mechanical appliance; parts</b>	<b>287,941</b>	<b>13.9</b>
<i>Of which:</i>	<i>Parts of machinery of 84.26, 84.29 and 84.30, nes</i>	23,625	8.2
	<i>Machinery for the extraction/preparation of animal/vegetable fats or oil</i>	23,504	8.2
	<i>Parts of machinery of 84.74</i>	19,886	6.9
	<i>Self-propelled earth moving, grading, excavating...</i>	17,639	6.1
	<i>Self-propelled front-end shovel loaders</i>	13,653	4.7
	<i>Self-propelled bulldozers and angle dozers, (excl.</i>	12,738	4.4
	<i>Parts of pumps for liquids</i>	12,655	4.4
	<i>Crushing or grinding machines for earth, stone, ores, etc</i>	10,056	3.5
	<i>Cold metal-rolling mills</i>	8,820	3.1
	<i>Self-propelled boring or sinking machinery</i>	8,531	3.0
	<i>Pumps for liquids, nes</i>	7,169	2.5
	Rest of Chapter 84	129,665	45.0
<b>26</b>	<b>Ores, slag and ash</b>	<b>253,182</b>	<b>12.3</b>
<i>Of which:</i>	<i>Copper ores and concentrates</i>	153,081	60.5
	<i>Cobalt ores and concentrates</i>	99,159	39.2
	<i>Rest of the Chapter 26</i>	942	0.4
<b>27</b>	<b>Mineral fuels, oils &amp; product of their distillation; etc</b>	<b>231,842</b>	<b>11.2</b>

Chapter	Description	April* 2010	
		Value	% Share
87	Vehicles o/t railw/tranw rool-stock, pts & accessories	122,470	5.9
31	Fertilisers	108,396	5.2
85	Electrical mchy equip parts thereof; sound recorder etc	69,913	3.4
39	Plastics and articles thereof	59,869	2.9
73	Articles of iron and steel	53,817	2.6
72	Iron and steel	52,834	2.6
30	Pharmaceutical products	46,195	2.2
28	Inorgn chem; compds of prec met, radioact elements etc	45,620	2.2
40	Rubber and articles thereof	33,493	1.6
38	Miscellaneous chemical products	32,861	1.6
15	Animal/veg fats & oil & their cleavage products; etc	32,233	1.6
29	Organic chemicals	22,294	1.1
90	Optical, photo, cine, meas, checking, precision, etc	19,912	1.0
25	Salt; sulphur; earth & ston; plastering mat; lime & cem	18,944	0.9
63	Other made up textile articles; sets; worn clothing etc	18,122	0.9
48	Paper & paperboard; art of paper pulp, paper/paperboard	17,045	0.8
94	Furniture: bedding, mattress, matt support, cushion etc	16,045	0.8
69	Ceramic products	14,844	0.7
34	Soap, organic surface-active agents, washing prep, etc	12,006	0.6
49	Printed books, newspapers, pictures & other product etc	8,749	0.4
36	Explosives; pyrotechnic prod; matches; pyro alloy; etc	8,351	0.4
82	Tool, implement, cutlery, spoon & fork, of base met etc	7,201	0.3
33	Essential oils & resinoids; perf, cosmetic/toilet prep	7,151	0.3
20	Prep of vegetable, fruit, nuts or other parts of plants	6,291	0.3
76	Aluminium and articles thereof	6,104	0.3
21	Miscellaneous edible preparations	5,920	0.3
64	Footwear, gaiters and the like; parts of such articles	5,175	0.3
70	Glass and glassware	5,168	0.3
32	Tanning/dyeing extract; tannins & derivs; pigm etc	5,090	0.2
61	Art of apparel & clothing access, knitted or crocheted	4,897	0.2
22	Beverages, spirits and vinegar	4,836	0.2
19	Prep of cereal, flour, starch/milk; pastrycooks' prod	4,778	0.2
23	Residues & waste from the food indust; prepr ani fodder	4,571	0.2
62	Art of apparel & clothing access, not knitted/crocheted	4,448	0.2
	Other chapters	404,387	19.7
<b>TOTAL</b>		<b>2,065,995</b>	<b>100.0</b>

Source: CSO, *International Trade Statistics, 2010*

Note: (\*) Provisional

### ***Zambia's Major Import Sources by Product, April 2010***

The major source of Zambia's imports in April 2010 was Congo (DR) accounting for 30.5 percent. The major import products from Congo (DR) were Copper ores and concentrates (24.3 percent); Cobalt ores and concentrates (15.7 percent); Cobalt oxides and hydroxides; commercial cobalt oxides (4.3 percent). Other notable imports were Mobile drilling derricks and Chemical products & residual products of chemical.

The second main source of Zambia's imports in April 2010 was South Africa

accounting for 30.1 of the total value of imports. The major import products from South Africa were: Urea (3.7 percent); Other fertilizers, nes (3.5 percent); Parts of machinery of 84.26, 84.29 and 84.30, nes (2.0 percent); and Parts of pumps for liquids (2.0 percent).

Other notable sources of Zambia's imports were Kuwait, China and United Arab Emirates, collectively accounting for 16.0 percent of Zambia's total imports in April 2010.

**Zambia's Major Import Sources by Products, April 2010\* (K'Millions)**

Country / Hs-Code	Description	April* 2010	
		Value (K'Million)	% Share
<b>CONGO DR</b>		<b>630,917</b>	<b>100.0</b>
26030000	Copper ores and concentrates	153,081	24.3
26050000	Cobalt ores and concentrates	99,159	15.7
28220010	Cobalt oxides and hydroxides; commercial cobalt ox	26,913	4.3
87052000	Mobile drilling derricks	3,099	0.5
38249000	Chemical products and residual products of chemical	3,072	0.5
28020010	Sulphur, sublimed or precipitated; colloidal sulph	1,013	0.2
34042010	Of polyethylene glycol: in bulk	797	0.1
87041000	Dumpers for off-highway use	516	0.1
84749000	Parts of machinery of 84.74	321	0.1
85023900	Generating sets,(excl.wind-powered) nes	91	0.0
Other Products		342,856	54.3
<b>% of Total April Imports</b>		<b>30.5</b>	
<b>SOUTH AFRICA</b>		<b>622,401</b>	<b>100.0</b>
31021000	Urea	22,791	3.7
31059000	Other fertilizers, nes	21,572	3.5
84314900	Parts of machinery of 84.26, 84.29 and 84.30, nes	12,522	2.0
84139100	Parts of pumps for liquids	12,138	2.0
84291900	Self-propelled bulldozers and angledozers, (excl.	12,083	1.9
31023000	Ammonium nitrate	10,973	1.8
84742000	Crushing or grinding machines for earth, stone, ores, etc	9,922	1.6
72104900	Flatrolled iron/steel,wid.>=600mm,zinc plated/coat	8,974	1.4
15111000	Crude palm oil	8,745	1.4
27101950	Cutting oil,grease cutting oils,cleaning oils etc.	8,354	1.3
Other Products		494,326	79.4
<b>% of Total April Imports</b>		<b>30.1</b>	
<b>KUWAIT</b>		<b>200,236</b>	<b>100.0</b>
27090000	Petroleum oils and oils obtained from bituminous m	200,236	100.0
01051100	Live fowls of species gallus domesticus, weighing	0	0.0
01061900	Mammals--other	0	0.0
01062000	Reptiles (including snakes and turtles)	0	0.0
01063900	Birds:--other	0	0.0
01069000	Other live animals	0	0.0
02012000	Other cuts with bonnie in	0	0.0
02021000	Frozen bovine carcasses and half carcasses	0	0.0
02022000	Frozen unboned bovine meat (excl. carcasses)	0	0.0
02041000	Fresh or chilled lamb carcasses and half carcasses	0	0.0
Other Products		0	0.0
<b>% of Total April Imports</b>		<b>9.7</b>	
<b>CHINA</b>		<b>68,706</b>	<b>100.0</b>
73089090	Structures and parts of structures, nes, of iron o	4,715	6.9
72163300	H sections of iron/steel, hot-rolled..., >=80mm high	4,572	6.7
85171200	Telephones for cellular networks or for other wireless networks	4,545	6.6
87042210	Goods m/v,with semi/diesel engines, gvw 5-20t -dua	2,239	3.3
84304100	Self-propelled boring or sinking machinery	2,145	3.1
27129010	Other paraffin wax... and similar products, nes -	1,958	2.8
40112000	New pneumatic tyres of rubber, of a kind used on b	1,945	2.8
73069000	Tubes, pipes and hollow profiles, riveted, of iron	1,832	2.7
84223000	Machinery for filling, closing...etc. bottles, cans e	1,609	2.3
69021000	Refractory bricks, blocks, tiles..., >50% mgo, cao	1,507	2.2
Other Products		41,639	60.6
<b>% of Total April Imports</b>		<b>3.3</b>	
<b>UNITED ARAB EMIRATES</b>		<b>62,142</b>	<b>100.0</b>
84792000	Machinery for the extraction/preparation of animal/vegetable fats or oil	23,287	37.5
85171200	Telephones for cellular networks or for other wireless networks	7,310	11.8
84552200	Cold metal-rolling mills	6,319	10.2
31021000	Urea	2,716	4.4
28331110	Disodium sulphate in bulk	2,224	3.6
70109000	Other carboys, bottles, flasks, jars, pots, phials, ampoules etc.	1,044	1.7
49119910	Other printed matter, nes-scratch cards for pre-paid telecom time.	967	1.6
85281200	Colour TV receivers, whether/not with radio/sound/video recording/reprod.app	864	1.4
84182900	Household refrigerators, nes	818	1.3
87032390	Vehicles with engine capacity exceeding 1500cc but	774	1.2
Other Products		15,820	25.5
<b>% of Total April Imports</b>		<b>3.0</b>	
<b>Other Destination</b>		<b>481,593</b>	<b>23.3</b>
<b>Total Value of April Imports</b>		<b>2,065,995</b>	

Source: CSO, International Trade Statistics, 2010

Note: (\*) Provisional

## ***Import Market Shares by Regional Groupings, April and March 2010***

The Southern African Development Community (SADC) regional grouping was the largest source of Zambia's imports accounting for 64.5 and 58.6 percent in April and March 2010, respectively. Within the SADC region, Congo (DR) was the major source of Zambia's imports in April 2010 accounting for 47.3 percent, while it was second in March 2010 with 41.9 percent. South Africa was the second major source of Zambia's imports with 46.7 percent in April 2010, while it was first in March 2010 with 52.2 percent. Other key market sources were Tanzania, Zimbabwe, Malawi and Mozambique.

The Common Market for Eastern and Southern Africa (COMESA) grouping of countries was the second largest source of Zambia's imports accounting for 34.1 percent in April 2010. Within COMESA, Congo (DR) was the main source of Zambia's imports with 89.6 and 88.6 percent in April and March 2010, respectively. Zimbabwe was the second largest market with 4.5 and 4.7 percent in April and March 2010, respectively. Other

notable sources were Kenya, Egypt and Malawi.

Asia was the third largest market for Zambia's imports accounting for 22.2 percent in April 2010. Within Asia, Kuwait was the dominant market in April and March 2010 with 43.7 and 58.3 percent, respectively. China was the second largest market with 15.0 and 13.6 percent in April and March 2010 respectively. Other notable markets were United Arab Emirates, India and Japan.

The European Union (EU) was the fourth largest source of Zambia's imports with 7.0 percent in both April and March 2010, respectively. Within the EU, the United Kingdom was the major source of Zambia's imports accounting for 23.7 and 24.1 percent in April and March 2010, respectively. Germany was the second dominant market with 17.9 percent in April 2010 and 17.1 percent in March 2010. Other key markets were Ireland, Finland, Sweden, Austria, Italy, Germany, and Italy.

**Import Market shares by major Regional groupings, April 2010 and MARCH 2010**

GROUPING	April* 2010		GROUPING	March@ 2010	
	Value (K'Million)	% Share		Value (K'Million)	% Share
<b>SADC</b>	<b>1,333,410</b>	<b>100.0</b>	<b>SADC</b>	<b>1,242,732</b>	<b>100.0</b>
CONGO DR	630,917	47.3	SOUTH AFRICA	649,171	52.2
SOUTH AFRICA	622,401	46.7	CONGO DR	521,239	41.9
ZIMBABWE	31,592	2.4	ZIMBABWE	27,558	2.2
TANZANIA, UNITED	25,386	1.9	TANZANIA, UNITED	12,742	1.0
MALAWI	6,075	0.5	MOZAMBIQUE	7,645	0.6
Other SADC	17,039	1.3	Other SADC	24,376	2.0
<b>% of Total April Imports</b>		<b>64.5</b>	<b>% of Total March Imports</b>		<b>58.6</b>
<b>COMESA</b>	<b>703,867</b>	<b>100.0</b>	<b>COMESA</b>	<b>645,702</b>	<b>100.0</b>
CONGO DR	630,917	89.6	CONGO DR	521,239	88.6
ZIMBABWE	31,592	4.5	ZIMBABWE	27,558	4.7
KENYA	21,490	3.1	KENYA	19,245	3.3
EGYPT	8,867	1.3	SWAZILAND	6,681	1.1
MALAWI	6,075	0.9	MALAWI	5,246	0.9
Other COMESA	4,925	0.7	Other COMESA	8,021	1.4
<b>% of Total April Imports</b>		<b>34.1</b>	<b>% of Total March Imports</b>		<b>27.7</b>
<b>ASIA</b>	<b>458,254</b>	<b>100.0</b>	<b>ASIA</b>	<b>587,990</b>	<b>100.0</b>
KUWAIT	200,236	43.7	KUWAIT	376,759	58.3
CHINA	68,706	15.0	CHINA	87,857	13.6
UNITED ARAB EMIRATES	62,142	13.6	INDIA	42,138	6.5
INDIA	55,618	12.1	UNITED ARAB EMIRATES	34,082	5.3
JAPAN	27,759	6.1	JAPAN	28,252	4.4
Other ASIA	43,793	9.6	Other ASIA	76,615	11.9
<b>% of Total April Imports</b>		<b>22.2</b>	<b>% of Total March Imports</b>		<b>30.5</b>
<b>EUROPEAN UNION</b>	<b>144,371</b>	<b>100.0</b>	<b>EUROPEAN UNION</b>	<b>147,923</b>	<b>100.0</b>
UNITED KINGDOM	34,220	23.7	UNITED KINGDOM	35,612	24.1
GERMANY	25,805	17.9	IRELAND	25,257	17.1

GROUPING	April* 2010		GROUPING	March@ 2010	
	Value (K'Million)	% Share		Value (K'Million)	% Share
IRELAND	16,568	11.5	AUSTRIA	15,763	10.7
FINLAND	11,704	8.1	ITALY	12,154	8.2
SWEDEN	11,219	7.8	GERMANY	10,941	7.4
Other EU	44,857	31.1	Other EU	48,195	32.6
<b>% of Total April Imports</b>		<b>7.0</b>	<b>% of Total March Imports</b>		<b>7.0</b>
<b>Total Value of March Exports</b>	<b>2,065,995</b>		<b>Total Value of February Exports</b>	<b>2,119,079</b>	

Source: CSO, International Trade Statistics, 2010

Note: (\*) Provisional

Some countries are members of both SADC and COMESA

### **Zambia's major Imports by Mode of Transport, April 2010 (K' million)**

Road transport was the major mode of transport for Zambia's imports with 61.7 percent in April 2010. It was followed by

Multimode (sea& road) with 20.2 percent; multimode (other) with 9.9 percent and Air transport (6.1 percent).

### **Zambia's major Imports by Mode of Transport, January to April 2010 (K' million)**

Mode of transport	January@		February@		March@		April*	
	Value	% share	Value	% share	Value	% share	Value	% share
Road transport	961,756	54.5	1,057,795	56.6	1,128,801	53.3	1,274,307	61.7
Multimodal - sea & road	394,158	22.3	381,366	20.4	372,065	17.6	417,984	20.2
Multimodal - other	206,884	11.7	237,172	12.7	377,775	17.8	204,071	9.9
Air transport	121,401	6.9	143,239	7.7	148,403	7	125,927	6.1
Others	81,244	4.6	49,156	2.6	92,033	4.4	43,706	2.1
<b>Total</b>	<b>1,765,443</b>	<b>100</b>	<b>1,868,727</b>	<b>100</b>	<b>2,119,079</b>	<b>100</b>	<b>2,065,995</b>	<b>100</b>

Source: CSO, International Trade Statistics, 2010

Note: (\*) Provisional

Some countries are members of both SADC and COMESA

# 2009 Zambia Sexual Behaviour Survey results

## ***HIV testing has tremendously increased!***

The 2009 Zambia Sexual Behaviour Survey results show that 46.1 percent of respondents have been tested for HIV an increase of 32.9 percentage points from 13.2 in 2005. There were notable

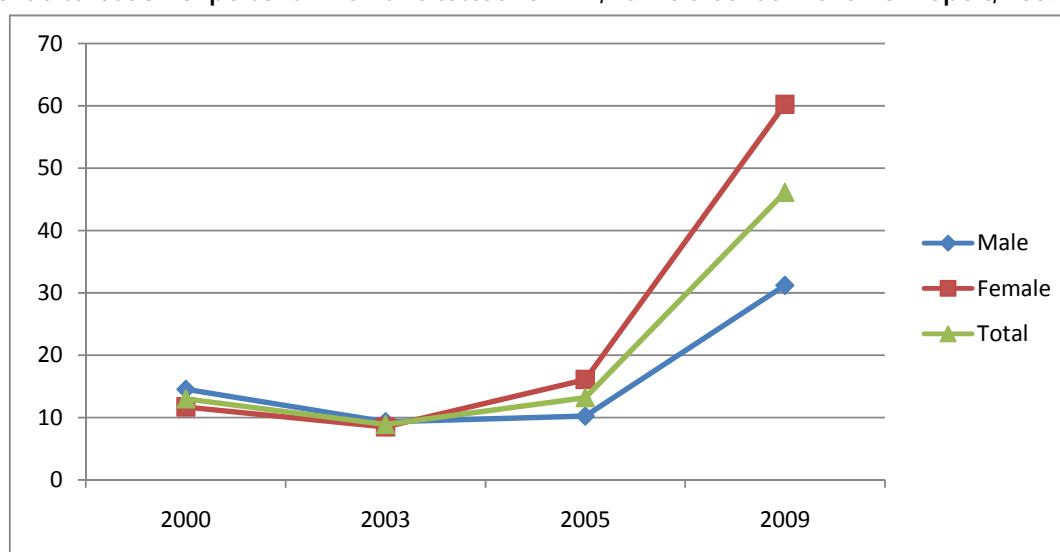
differences by residence and sex. More people in urban than rural areas reported that they had been tested for HIV. Furthermore, nearly twice as many females than males had tested for HIV.

### **Percent distribution of persons who have tested for HIV, Zambia Sexual Behavior Report, 2009**

Background characteristics	2000	2003	2005	2009
Total	13.0	8.9	13.2	46.1
<b>Sex</b>				
Male	14.5	9.3	10.2	31.2
Female	11.7	8.5	16.1	60.2
<b>Residence</b>				
Rural	11.2	5.7	9.2	41.9
Urban	15.7	14.0	20.6	52.8

Source: 2009 Zambia Sexual Behaviour Survey

### **Percent distribution of persons who have tested for HIV, Zambia Sexual Behavior Report, 2009**



Source: 2009 Zambia Sexual Behaviour Survey

Survey results also show that HIV testing among pregnant women has dramatically increased from 12.7 percent in 2005 to 67 percent in 2009. A

comparison of rural and urban areas shows that testing for HIV has consistently been higher in urban than rural areas.

### **Percent distribution of pregnant women who have tested for HIV**

Background characteristics	2000	2003	2005	2009
Total	6.2	5.2	12.7	67.0
<b>Residence</b>				
Rural	4.1	1.8	6.2	58.3
Urban	11.3	12.9	34.0	86.1

Source: 2009 Zambia Sexual Behaviour Survey

# CENSUS SCHEDULED FOR OCTOBER 2010!

The Census of Population and Housing is carried out under the provisions of the Census and Statistics ACT Chapter 127 of the laws of Zambia. Under this ACT the Central Statistical Office is mandated to carry out a Census of Population and Housing every ten years. The first comprehensive census was carried out in 1969. Since then, three more censuses have been carried out, in 1980, 1990 and 2000. The next census will be carried out this year (2010).

Under this ACT, all persons residing in Zambia, except foreign diplomats accredited to Zambia are required to provide the necessary information.

## WHAT IS A CENSUS?

*A Census of Population and Housing is defined as the total process of collecting, compiling, evaluating, analyzing and publishing demographic, economic and social data pertaining, at a specified time or times, to all persons in a designated area or the whole country. It is the primary source of information about the population of a country. It is undertaken at regular intervals, usually after ten years.*

## WHY HOLD A CENSUS?

*The main objective of conducting a Population Census is to enumerate all the people in the country in order to provide the Government, private organizations, individuals, and other stakeholders with the number of persons in each district, township, locality, village, etc., according to age, sex, and other characteristics. For every aspect of planning, it is essential to know the size, structure and distribution of the population of a country. For instance, to plan for education, the country needs to have numbers of the school going population by sex and age.*

## CENSUS ACTIVITIES

*Being a huge undertaking, the census encompasses various activities for its success. These include pre census, census and post census activities. Pre census activities include census mapping, pilot census, formation of committees to coordinate all aspects of the census, publicity, stakeholder consultations, recruitment and procurement.*

*The pilot census is carried out on sample basis to test the methodology of the census including questionnaire suitability, logistical arrangements, mapping, staffing and other resource requirements. The main census involves collection of data on all persons in the country. The post census activities include Post Enumeration Survey, data processing and analysis, report writing and dissemination.*

## CENSUS MAPPING

*One of the most important activities that the office carries out before a census is the census mapping exercise. The objective of this exercise is to delineate the country into enumeration areas (EAS) to ensure that there is no duplication or omission of persons or households during the Census.*

*A census mapping is also undertaken in order to:*

- Determine the location of the population in advance of the census enumeration in order to make possible the recruitment, training and allocation of a sufficient number of enumerators to ensure that census enumeration is completed in time without omissions or duplications;*
- Establish the framework for sample surveys prior to, during or after census enumeration;*
- Enable the Central Statistical Office to provide results of the census for areas whose locations are known.*

*The 2010 census mapping strategy has involved the use of the Global Positioning System (GPS) in rural areas and satellite imagery in major and small urban areas to delineate enumeration areas. The GPS is a modern tool that enables collection of precise geo codes. So far, 69.4 percent of wards in the county have been mapped.*

## PILOT CENSUS

*The Pilot Census was conducted in February, 2010. Two districts were selected from each of the provinces except for Central, Copperbelt and Lusaka where three districts were selected from each. Both rural and urban districts were selected in each province. In each of the selected districts, mapped and unmapped areas were selected. This was done in order to have a “feel” of enumeration in rural and urban areas; and in mapped and unmapped areas, even when it is anticipated that mapping will be completed at the time of enumeration.*

**HELP THE CENSUS HELP YOU, BE COUNTED!**

For details, **visit the CSO website:** [www.zamstats.gov.zm](http://www.zamstats.gov.zm)



## SELECTED SOCIO-ECONOMIC INDICATORS

### PROJECTED MID-YEAR POPULATION 2000-2010

	2000	2001	2002	2003	2004	2005	2006	2007	2008	2009	2010
<i>Total Population</i>	9,885,591	10,089,492	10,409,441	10,744,380	11,089,691	11,441,461	11,798,678	12,160,516	12,525,791	12,896,830	13,272,553
<i>Population Growth Rate</i>	2.5	3.1	3.1	3.1	3.1	3.1	3	3	2.9	2.9	2.8
<i>Life Expectancy at Birth</i>	50	51.8	51.9	52.4	52.4	52.6	51.9	51.4	51.3	51.2	51.3
<b>POPULATION BY PROVINCE</b>											
<i>Central</i>	1,012,257	1,032,574	1,066,992	1,103,387	1,141,256	1,180,124	1,219,980	1,260,491	1,301,776	1,343,835	1,386,628
<i>Copperbelt</i>	1,581,221	1,611,569	1,662,155	1,714,225	1,767,165	1,820,443	1,874,081	1,927,576	1,980,824	2,034,012	2,088,14
<i>Eastern</i>	1,306,173	1,348,070	1,391,690	1,436,120	1,482,290	1,530,118	1,579,960	1,631,890	1,684,910	1,740,180	1,797,787
<i>Luapula</i>	775,353	791,067	817,326	845,076	873,969	903,746	934,317	965,605	997,579	1,030,572	1,064,422
<i>Lusaka</i>	1,391,329	1,413,010	1,453,690	1,495,730	1,538,000	1,579,769	1,620,730	1,660,070	1,697,730	1,733,830	1,768,205
<i>Northern</i>	1,258,696	1,277,250	1,315,650	1,357,540	1,401,340	1,445,730	1,490,330	1,534,170	1,577,310	1,619,980	1,662,241
<i>North-western</i>	583,350	596,010	616,496	638,004	660,322	683,367	707,074	731,351	756,261	781,800	808,046
<i>Southern</i>	1,212,124	1,235,134	1,275,470	1,318,161	1,362,382	1,407,433	1,453,324	1,499,462	1,545,880	1,592,864	1,706,468
<i>Western</i>	765,088	774,929	795,247	816,983	839,757	863,294	887,540	912,226	937,419	963,107	989,345

Source: CSO, Population Projections Report

Note: 2000 figures are from the 2000 Census of Population and Housing while the 2001 to 2010 figures are the Population Projections Report

### GROSS DOMESTIC PRODUCT 2001-2009

	2001	2002	2003	2004	2005	2006	2007	2008	2009*
Total GDP in current prices (K' billion)	13,194	16,324	20,551	25,993	32,042	38,561	46,195	55,079	64,326
Total GDP in constant 1994 prices (K' billion)	2,620	2,707	2,845	2,999	3,159	3,356	3,564	3,765	4,003
Population	10,089,492	10,409,441	10,744,380	11,089,691	11,441,461	11,798,678	12,160,516	12,525,791	12,896,830
GDP per capita in current prices	1,307,669	1,568,234	1,912,731	2,343,902	2,800,474	3,268,231	3,798,753	4,397,227	4,987,744
GDP per capita in constant 1994 prices	259,656	260,024	264,835	270,454	276,141	284,450	293,079	300,615	310,388
GDP growth rates in constant 1994 prices	4.9	3.3	5.1	5.4	5.3	6.2	6.2	5.7	6.3
Growth in GDP per capita at constant prices	1.8	0.1	1.9	2.1	2.1	3.0	3.0	2.6	3.3
<b>PERCENTAGE CHANGES IN GROSS DOMESTIC PRODUCT BY KIND OF ECONOMIC ACTIVITY - CONSTANT 1994 PRICES</b>									
<b>KIND OF ECONOMIC ACTIVITY</b>	<b>2001</b>	<b>2002</b>	<b>2003</b>	<b>2004</b>	<b>2005</b>	<b>2006</b>	<b>2007</b>	<b>2008</b>	<b>2009*</b>
Agriculture, Forestry and Fishing	(2.6)	(1.7)	5.0	4.3	(0.6)	2.2	0.4	2.6	7.1
Agriculture	(6.0)	(6.3)	8.0	6.1	(4.0)	3.0	(2.7)	1.9	12.4
Forestry	4.3	4.3	4.3	4.3	3.6	1.4	3.7	3.7	3.6
Fishing	(5.0)	(0.7)	(0.7)	(0.7)	0.5	1.8	1.8	1.8	1.5
Mining and Quarrying	14.0	16.4	3.4	13.9	7.9	7.3	3.6	2.5	15.8
Metal Mining	15.0	17.1	3.3	13.5	7.1	9.0	4.4	2.5	15.9
Other mining and quarrying	(15.0)	(13.0)	10.7	35.8	42.9	(45.8)	(45.5)	(3.5)	1.8
<b>PRIMARY SECTOR</b>	<b>1.9</b>	<b>3.8</b>	<b>4.5</b>	<b>7.5</b>	<b>2.5</b>	<b>4.1</b>	<b>1.7</b>	<b>2.5</b>	<b>10.5</b>
Manufacturing	4.2	5.7	7.6	4.7	2.9	5.7	3.0	1.8	2.5
Food, Beverages and Tobacco	5.3	5.4	8.6	5.8	3.6	8.9	7.6	3.0	4.4
Textile, and leather industries	2.3	6.2	3.2	(1.9)	(2.9)	(1.3)	(19.5)	(23.6)	(18.9)
Wood and wood products	5.7	7.5	11.4	4.2	3.6	0.7	3.7	12.1	6.6
Paper and Paper products	3.8	2.2	8.2	2.5	10.6	0.3	0.7	29.3	8.8
Chemicals, rubber and plastic products	4.3	10.0	4.9	8.5	3.2	4.6	4.2	5.2	1.5
Non-metallic mineral products	3.5	1.7	14.9	14.4	7.4	(5.2)	2.3	5.0	9.0
Basic metal products	(18.0)	4.3	15.1	3.1	(2.0)	1.9	(4.8)	23.0	0.1
Fabricated metal products	(8.0)	(4.0)	5.3	4.8	7.4	5.0	7.8	(2.5)	(4.8)
Electricity, Gas and Water	12.6	(5.2)	0.4	(1.7)	5.4	10.5	1.0	(1.2)	8.6
Construction	11.5	17.4	21.6	20.5	21.2	14.4	20.0	8.7	15.5
<b>SECONDARY SECTOR</b>	<b>7.5</b>	<b>7.2</b>	<b>10.8</b>	<b>9.1</b>	<b>10.0</b>	<b>9.8</b>	<b>10.0</b>	<b>4.7</b>	<b>9.4</b>
Wholesale and Retail trade	5.4	5.0	6.1	5.0	2.4	2.0	2.4	2.5	3.0
Restaurants, Bars and Hotels	24.4	4.9	6.9	6.4	11.7	16.1	9.6	5.0	(14.5)
Transport, Storage and Communications	2.8	1.8	4.8	6.4	11.0	22.1	19.2	15.8	3.1
Rail Transport	7.6	6.0	(8.1)	(1.8)	(11.6)	(2.6)	(18.7)	(20.2)	(31.2)
Road Transport	0.5	1.9	3.9	4.2	6.3	6.4	6.4	13.2	13.3
Air Transport	10.6	(8.4)	3.9	18.1	10.8	33.5	24.1	13.7	(29.0)
Communications	0.6	7.9	10.0	5.0	23.2	40.5	33.6	21.1	12.0
Financial Institutions and Insurance	0.1	3.5	3.5	3.5	3.3	4.0	4.1	8.7	5.0
Real Estate and Business services	3.5	4.4	4.0	4.0	3.2	3.2	3.1	3.1	3.1
Community, Social and Personal Services	5.8	1.6	1.6	0.6	11.4	9.0	12.5	11.7	6.8
Public Administration & Defence/Public sanitary services	1.0	(1.0)	0.2	0.2	6.2	(8.7)	14.8	2.2	(10.4)
Education	13.5	7.0	3.0	0.3	22.2	35.3	13.6	19.6	22.5
Health	16.5	1.0	2.5	(0.8)	(2.2)	5.2	1.0	18.3	3.3
Recreation, Religious, Culture	10.0	(2.0)	4.5	4.3	34.1	22.8	9.3	26.7	8.5
Personal Services	3.5	3.5	3.5	3.5	3.5	3.5	3.5	3.5	3.5
<b>TERTIARY SECTOR</b>	<b>4.7</b>	<b>3.8</b>	<b>4.5</b>	<b>4.2</b>	<b>5.4</b>	<b>6.7</b>	<b>7.1</b>	<b>7.1</b>	<b>3.0</b>
Less: FISIM	2.5	2.5	2.5	2.5	2.5	2.5	2.5	2.5	2.5
Total Gross Value Added	4.6	4.6	6.0	6.2	5.8	7.0	6.7	5.7	6.3
Taxes less subsidies	7.0	(6.7)	(2.7)	(2.7)	(0.1)	(3.1)	(0.3)	5.7	6.3
<b>TOTAL G.D.P. AT MARKET PRICES</b>	<b>4.9</b>	<b>3.3</b>	<b>5.1</b>	<b>5.4</b>	<b>5.3</b>	<b>6.2</b>	<b>6.2</b>	<b>5.7</b>	<b>6.3</b>

Source: CSO, National Accounts Statistics \*Preliminary

Index of industrial production for 2008 and the first two quarters of 2009

PERIOD	TOTAL INDEX	MINING				MANUFACTURING										TOTAL ELECTRICITY
		TOTAL MINING	Coal	Non-ferrous Ore	Stone Quarrying	TOTAL MANUFACTURING	Food, Beverages & Tobacco	Textile, Clothing & Leather	Wood & Wood Products	Paper & Paper Products	Chemicals, Rubbers & Plastics	Non-metallic Mineral Products	Basic Metal Industries	Fabricated Metal Products		
WEIGHT	1.000	0.350	0.005	0.242	0.103	0.511	0.235	0.060	0.006	0.017	0.059	0.025	0.009	0.100	0.139	
2008 Q1	159.0	243.1	7.4	227.8	289.4	113.5	131.9	54.8	205.3	107.4	134.2	125.4	80.2	88.8	114.6	
2008 Q2	158.1	219.5	0.1	197.0	281.9	125.3	169.0	37.3	216.8	123.1	98.2	152.7	86.6	82.5	124.1	
2008 Q3	163.5	217.9	0.0	196.2	278.3	137.8	189.5	21.7	159.5	88.4	95.0	155.1	84.8	118.3	121.8	
2008 Q4	164.0	209.8	0.0	196.8	249.6	142.5	196.4	48.7	167.2	135.2	76.3	164.2	68.9	112.0	127.8	
2008	161.1	222.5	1.9	204.4	274.8	129.8	171.7	40.6	187.2	113.5	101.0	149.3	80.1	100.4	122.1	
2009 Q1	174.0	276.3	0.0	265.9	312.8	114.7	136.9	45.5	219.4	118.8	137.1	136.7	82.1	81.2	134.9	
2009 Q2	177.2	265.0	83.1	250.4	307.4	129.2	177.3	29.2	230.3	132.1	98.9	166.6	84.9	81.9	132.8	
2008 (Q1+Q2)	158.5	231.3	3.8	212.4	285.6	119.4	150.4	46.0	211.0	115.3	116.2	139.1	83.4	85.6	119.4	
2009 (Q1+Q2)	175.6	270.7	41.5	258.2	310.1	122.0	157.1	37.3	224.9	125.4	118.0	151.6	83.5	81.5	133.9	
<b>YEAR ON YEAR PERCENTAGE CHANGE</b>																
2008 Q1	8.5	17.5	(12.8)	15.8	20.7	3.3	2.2	(10.2)	16.4	16.3	15.2	6.5	24.3	(2.4)	(11.5)	
2008 Q2	3.2	3.8	(99.0)	(1.7)	14.4	3.7	4.2	(12.1)	26.4	32.8	2.9	3.0	41.8	(3.5)	(0.8)	
2008 Q3	5.5	8.7	(100.0)	(6.7)	49.5	3.0	6.3	(34.4)	(3.1)	27.6	(1.2)	1.1	26.2	(2.5)	2.0	
2008 Q4	2.8	7.1	(100.0)	2.8	16.4	(0.9)	(0.4)	(35.7)	7.7	39.5	6.0	9.7	1.6	(1.8)	1.3	
2008	4.9	9.3	(77.5)	2.4	23.9	2.2	3.0	(23.4)	12.1	29.3	6.2	5.0	23.0	(2.5)	(2.4)	
*2009 Q1	9.5	13.7	(100.0)	16.8	8.1	1.1	3.8	(17.0)	6.9	10.6	2.1	9.0	2.3	(8.5)	17.7	
**2009 Q2	12.1	20.7	82990.9	27.1	9.0	3.2	4.9	(21.7)	6.2	7.3	0.6	9.1	(1.9)	(0.8)	7.0	
2008 (Q1+Q2)	5.8	10.5	(60.5)	7.0	17.5	3.5	3.3	(11.0)	21.3	24.5	9.7	4.5	32.8	(3.0)	(6.3)	
2009 (Q1+Q2)	10.8	17.0	1006.9	21.5	8.6	2.2	4.4	(18.9)	6.6	8.8	1.5	9.0	0.1	(4.8)	12.2	

Source: CSO Index of Industrial Production

Note: ( ) negative

\*Revised

\*\*Preliminary

### INFLATION TRENDS 2000-2009

Year	Year on Year Inflation
1990	110.6
1991	99.7
1992	180.7
1993	128.1
1994	38.3
1995	46.0
1996	35.2
1997	18.6
1998	30.6
1999	20.6
2000	30.1
2001	18.7
2002	26.7
2003	17.2
2004	17.5
2005	15.9
2006	8.2
2007	8.9
2008	16.6
2009	9.9

Source: CSO, Prices Statistics

### ROAD TRAFFIC ACCIDENT POLICE REPORTS, 2006 TO 2007

POLICE DIVISION/PROVINCE	NUMBER OF ROAD TRAFFIC ACCIDENTS			NUMBER OF PERSONS KILLED			NUMBER OF PERSONS SERIOUSLY INJURED			NUMBER OF PERSONS SLIGHTLY INJURED			ADMISSION OF GUILTY RAISED (kwacha)	
	2006	2007	% Change	2006	2007	% Change	2006	2007	% Change	2006	2007	% Change	2006	2007
Central	1,047	1,382	32	191	158	(17)	520	548	5	376	269	(28)	214,433,570	274,002,608
Copperbelt	4,105	5,400	32	265	301	14	1,031	1,300	26	1,250	1,664	33	1,888,762,000	2,907,262,000
Eastern	632	693	10	79	85	8	159	129	(19)	140	207	48	287,050,916	359,249,000
Luapula	185	190	3	54	51	(6)	166	203	22	17	41	141	212,895,100	332,581,000
Lusaka	10,513	10,889	4	335	413	23	938	915	(2)	2,177	2,158	(1)	1,569,921,500	1,695,469,000
N/Western	549	735	34	32	56	75	185	223	21	126	229	82	77,666,000	203,912,000
Nothern	443	569	28	89	71	(20)	366	391	7	131	217	66	208,817,000	248,637,500
Southern	1,279	1,431	12	100	105	5	407	290	(29)	234	160	(32)	958,622,500	1,106,798,000
Western	342	401	17	25	26	4	191	182	(5)	127	132	4	130,000,000	187,608,500
<b>TOTAL</b>	<b>19,095</b>	<b>21,690</b>	<b>14</b>	<b>1,170</b>	<b>1,266</b>	<b>8</b>	<b>3,963</b>	<b>4,181</b>	<b>6</b>	<b>4,578</b>	<b>5,077</b>	<b>11</b>	<b>5,548,168,586</b>	<b>7,315,519,608</b>

Source: Zambia police, road traffic section

**NUMBER OF MOTOR VEHICLE ACCIDENTS BY PROVINCE FROM 2004 TO 2008**

Province	2004	2005	2006	2007	2008
Lusaka	6222	6646	10513	10889	11180
Copperbelt	3173	3530	4105	5400	3442
Central	918	937	1047	1382	1311
Southern	1130	1010	1279	1431	1234
N/Western	537	171	549	693	882
Eastern	293	1267	632	401	469
Western	314	260	342	735	470
Northern	254	101	443	569	493
Luapula	164	153	185	190	246
<b>Total</b>	<b>13005</b>	<b>14075</b>	<b>19095</b>	<b>21690</b>	<b>19727</b>

Source: RTSA/Zambia Police

**VEHICLE POPULATION, NUMBER OF ACCIDENTS AND NUMBER OF FATALITIES PER 10,000 VEHICLES**

Year	Number of vehicles registered	Number of Accidents	Number of fatalities	Number of Accidents per 10, 000 Vehicles	Number of Fatalities per 10, 000 Vehicles
2004	111,460	13,005	892	1,167	80
2005	140,225	14,075	869	1,004	62
2006	183,701	19,095	1,176	1,039	64
2007	227,950	21,690	1,277	952	56
2008	277,870	19,727	1,238	710	45

Source: RTSA/Zambia Police

**POPULATION OF MOTOR VEHICLES BY CATEGORY FOR THE YEAR 2008**

Vehicle Category	Number	Percentage
Motorcycle	7113	2.6
Motor tricycle	83	0.0
Light passenger vehicle	167055	60.1
Heavy passenger vehicle	5615	2.0
Light load Vehicle(GVM 3500KG or less)	56935	20.5
Agriculture Tractor	1167	0.4
Agriculture Trailer	167	0.1
Heavy load Vehicle(GVM >3500KG )	34900	12.6
Trailers	4835	1.7
<b>Total</b>	<b>277870</b>	<b>100.0</b>

Source: RTSA/Zambia Police

**ZAMBIA'S ANNUAL TOTAL EXPORTS IN ABSOLUTE ZAMBIAN KWACHA AND U S DOLLAR 2000-2009**

Flow	Total Exports	
Year	ZMK	USD
2000:	2,716,557,648,136	869,485,416
2001:	3,537,206,913,419	978,788,277
2002:	4,069,916,925,012	944,356,533
2003:	4,642,039,643,203	979,298,782
2004:	7,526,280,115,612	1,577,240,766
2005:	9,612,909,460,871	2,176,641,598
2006:	13,410,945,234,225	3,681,524,702
2007:	18,399,133,746,013	4,617,454,325
2008:	18,653,009,286,684	5,098,688,004
2009:	21,031,172,451,720	4,241,014,377
<b>Total:</b>	<b>82,567,998,973,175</b>	<b>20,923,478,403</b>

NOTE: 2000-2007 FIGURES ARE UNDER SPECIAL TRADE SYSTEM WHILE 2008 AND 2009 FIGURES ARE UNDER GENERAL TRADE SYSTEM

**ZAMBIA'S ANNUAL IMPORTS IN ABSOLUTE ZAMBIAN KWACHA AND U S DOLLAR 2000-2009**

Flow	IMPORT	
Year	ZMK	USD
2000:	2,751,563,199,592	871,386,492
2001:	3,900,496,869,495	1,079,955,769
2002:	4,732,881,915,324	1,103,070,912
2003:	7,439,867,256,553	1,573,309,968
2004:	10,279,302,826,391	2,150,649,040
2005:	11,466,668,652,907	2,579,688,391
2006:	11,049,770,813,126	3,023,996,472
2007:	15,945,289,847,742	4,006,980,387
2008:	18,476,489,239,723	5,060,482,666
2009:	18,941,257,150,282	3,792,668,160
<b>Total:</b>	<b>86,042,330,620,853</b>	<b>21,449,520,097</b>

## Interest Rates

End of Period	COMMERCIAL BANKS		CENTRAL BANK	TREASURY BILLS
	Weighted Lending Rates	Lending Rates	Interest Rates	YIELD RATE 91 DAYS
1990	-	-	34.0	-
1991	-	-	47.0	-
1992	-	-	54.0	-
1993	-	-	72.0	-
1994	36.2	-	25.4	-
1995	47.7	-	51.5	-
1996	57.4	69.0	70.0	-
1997	37.9	49.3	23.3	-
1998	37.4	37.0	43.4	-
1999	42.6	40.4	46.2	-
2000	37.6	45.9	44.1	-
2001	46.7	54.6	52.5	-
2002	42.5	50.0	34.0	-
2003	38.0	45.3	21.3	-
2004 MAR	31.8	39.1	9.6	-
Jun	29.8	36.9	7.8	-
Sep	30.0	37.4	14.7	-
Dec	29.8	37.1	18.3	-
2005 JAN	28.0	35.3	18.4	-
Feb	28.6	35.9	18.8	-
Mar	28.1	35.4	18.2	-
Apr	28.0	35.1	17.8	-
May	28.1	35.1	16.0	-
Jun	28.6	35.6	15.9	-
Jul	28.2	35.2	16.5	-
Aug	28.3	35.3	16.4	-
Sep	28.2	34.9	16.9	-
Oct	28.2	34.5	16.9	-
Nov	28.2	34.5	17.4	-
Dec	27.6	33.9	17.1	-
2006 JAN	26.7	33.0	17.1	15.1
Feb	26.4	32.7	16.1	14.1
Mar	25.4	31.6	14.7	12.7
Apr	25.2	31.4	11.0	9.0
May	22.8	29.0	8.4	6.4
Jun	21.6	27.8	7.5	5.5
Jul	21.7	27.9	8.6	6.6
Aug	21.7	27.9	9.6	7.6
Sep	21.6	27.8	10.9	8.6
Oct	21.6	27.8	12.3	10.3
Nov	21.6	27.8	11.1	9.1
Dec	21.6	27.9	10.7	8.7
2007 JAN	21.0	27.3	11.1	9.1
Feb	21.0	27.3	11.8	9.8
Mar	20.3	26.4	12.8	10.8
Apr	18.2	24.3	14.0	12.0
May	18.2	24.3	13.2	11.2
Jun	18.2	24.3	12.9	10.9
Jul	18.2	24.3	13.6	11.6
Aug	18.2	24.3	13.4	11.4
Sep	18.2	24.3	14.0	12.0
Oct	18.2	24.3	13.5	11.5
Nov	18.2	24.3	12.8	10.8
Dec	18.3	24.4	13.5	11.5
2008 JAN	18.4	24.5	13.2	11.2
Feb	18.3	24.4	12.6	10.6
Mar	18.2	24.3	12.9	10.9
Apr	18.2	24.3	13.0	11.0
May	18.2	24.3	14.1	12.1
Jun	18.5	24.6	14.1	12.1
Jul	18.6	24.7	14.1	12.1

End of Period	COMMERCIAL BANKS		CENTRAL BANK	TREASURY BILLS
	Weighted Lending Rates	Lending Rates	Interest Rates	YIELD RATE 91 DAYS
<i>Aug</i>	18.6	24.7	14.3	12.3
<i>Sep</i>	19.6	25.7	14.5	12.5
<i>Oct</i>	20.6	26.7	15.3	13.3
<i>Nov</i>	20.6	26.7	12.0	13.9
<i>Dec</i>	20.8	26.9	15.9	13.9
2009 JAN	20.9	27.0	15.8	13.8
<i>Feb</i>	20.9	27.0	16.3	14.3
<i>Mar</i>	20.9	27.0	16.0	14.0
<i>Apr</i>	20.7	26.6	16.2	14.2
<i>May</i>	21.6	27.8	15.9	13.9
<i>Jun</i>	22.4	28.9	15.6	13.6
<i>Jul</i>	22.4	28.9	17.1	15.1
<i>Aug</i>	23.0	29.5	18.1	16.1
<i>Sep</i>	23.1	29.6	17.5	15.5
<i>Oct</i>	23.1	29.6	16.6	14.6
<i>Nov</i>				
<i>Dec</i>				

Source: Bank of Zambia



## *Surveys/Activities being undertaken*

- ☞ 2010 Census Mapping
- ☞ 2010 Pilot Census
- ☞ 2008 Labour-force Survey
- ☞ 2010 Living Conditions Monitoring Survey VI
- ☞

## *Available*

- ☞ 2009/2010 Crop Forecasting Survey
- ☞ 2009 Zambia Sexual Behaviour Survey (ZSBS)
- ☞ Employment and Earnings Inquiry Report, January 2006
- ☞ National Accounts Statistics Bulletin No.9 2005
- ☞ Labour-Force Survey Report, 2005
- ☞ 2007 Zambia Demographic and Health Survey (ZDHS)

---

Subscribe for your free electronic copy of "The Monthly" online at [www.zamstats.gov.zm](http://www.zamstats.gov.zm)

---

*The Editorial Team would like to thank all Media Institutions and Users of.....*

## **“The Monthly Bulletin”**

Thank you for supporting us

### ***Secretarial***

<i>Efreda Chulu</i>	- Director
<i>John Kalumbi</i>	- Deputy Director
<i>Felix Muchingile</i>	- Research and Marketing Manager
<i>Mate Mate</i>	- Principal Research Officer
<i>Richard Kaela</i>	- Senior Research Officer
<i>Linda N. Chonya</i>	- Senior Research Officer
<i>Janet N. Zulu</i>	- Senior Gender Analyst
<i>Anthony Nkole</i>	- Desktop Publishing Officer
<i>Pery Musenge</i>	- Assistant Desktop Publishing Officer
<i>Petronella Kaputu</i>	- Press Liaison Officer
<i>Humphrey Zimba</i>	- Dissemination Officer
<i>Etambuyu Lukonga</i>	- Documentalist
<i>Cecilia M. Munjita</i>	- Librarian
<i>Chisuwa S. Nalishuwa</i>	- Assistant Field Co-ordinator

### ***Editorial Team***

<i>Efreda Chulu</i>	- Director
<i>John Kalumbi</i>	- Deputy Director (IRD)
<i>Modesto Banda</i>	- Deputy Director (AG)
<i>William Mayaka</i>	- Deputy Director (SOC)
<i>Peter Mukuka</i>	- Deputy Director (ECON)
<i>Shebo Nalishhebo</i>	- Statistician
<i>Josephine C. Banda</i>	- Statistician
<i>Gerson Banda</i>	- Statistician
<i>Palver Sikanyiti</i>	- Statistician
<i>Lubinda Mukata</i>	- Statistician